

**PHILLIPS**  
de PURY & COMPANY

**PIERRE  
BERGÉ**  
& ASSOCIÉS

ANTOINE GODEAU - FRÉDÉRIC CHAMBRE

HOTEL DE LA PAIX - GENEVE - MARDI 13 MAI 2008



**VAN CLEEF & ARPELS.** Années 1960.  
Important collier orné de rubis cabochon  
et diamants brillants.  
Est\_250 000 / 350 000 €

**PHILLIPS**  
de PURY & COMPANY

**PIERRE  
BERGÉ**  
& ASSOCIÉS

ANTOINE GODEAU - FRÉDÉRIC CHAMBRE

HOTEL DE LA PAIX - GENEVE - MARDI 13 MAI 2008



- 1

**A Diamond Ruby and Gold Pin** VANCLEEF & ARPELS circa 1963

Designed as a dog in 18K yellow gold, highlighted with rubies and circular-cut diamonds, length 4.5 cm.

Signed 'Van Cleef & Arpels' and numbered. With French assay marks.

CHF 4,000-6,000
- 2

**A Diamond Sapphire and Gold 'Ram' Pin** VANCLEEF & ARPELS circa 1960

Designed as a ram in textured 18K gold, enhanced with pavé-set diamond spiral horns, circular-cut sapphire eyes and black enamel feet, mounted in 18K yellow and white gold.

Signed 'Van Cleef & Arpels' and numbered. With French assay marks.

CHF 4,500-6,000
- 3

**A Diamond Ruby and Gold 'Lion' Pin** VANCLEEF & ARPELS circa 1960

Designed as a gold ruffled lion, the pavé-set diamond muzzle highlighted with black enamel, with ruby-set eyes, mounted in 18K yellow gold, length 3.5 cm.

Signed 'Van Cleef & Arpels' and numbered. With French assay marks.

CHF 3,000-4,000
- 4

**A Diamond Sapphire and Gold 'Hummingbird' Pin** VANCLEEF & ARPELS circa 1960

Designed as a hummingbird of textured 18K yellow gold highlighted with circular-cut diamonds and a sapphire-set eye, perched on a gold branch, length 10 cm.

Signed 'VCA' and numbered. With French assay marks.

CHF 10,000-15,000
- 5

**A Sapphire and Gold Brooch** VANCLEEF & ARPELS circa 1964

Designed as a textured gold chick enhanced with a cabochon sapphire eye and a small cultured pearl accent, mounted in 18K yellow gold, 3.5 cm.

Signed 'Van Cleef & Arpels,' numbered and dated. With French assay marks.

CHF 3,000-4,000
- 6

**A Diamond Ruby Turquoise and Gold 'Sparrow' Clip** VANCLEEF & ARPELS circa 1963

Designed as a textured 18K yellow gold sparrow, perched on a branch holding a cabochon turquoise, to the ruby and diamond floral detail, length 4.3 cm.

Signed 'Van Cleef & Arpels' and numbered. With French assay marks.

CHF 3,500-4,500
- 7

**A Gold and Emerald 'Tabby Cat' Brooch** VANCLEEF & ARPELS circa 1960

Designed as a textured gold feline decorated with black enamel stripes and cabochon emerald eyes, mounted in 18K yellow gold, length 4.5 cm.

Signed and numbered. With French assay marks.

CHF 4,000-6,000
- 8

**An Emerald Gold and Enamel 'Leopard' Pin** VANCLEEF & ARPELS

Designed as a leopard, the textured gold body decorated with black enamel spots, enhanced with emerald eyes, mounted in 18K yellow gold, length 4.9 cm.

CHF 5,000-8,000

1



2



3



4



5



6



7



8





- 9      **A Diamond Ruby Aquamarine and Gold Brooch** VAN CLEEF & ARPELS circa 1950  
Designed as birds perched on a branch, decorated with cabochon aquamarine torso, enhanced with circular-cut diamonds and rubies, mounted in 18K yellow gold, length 6 cm.  
Signed 'Van Cleef & Arpels,' with jeweler's mark and numbered. With French assay marks.  
**CHF 6,500-8,000**
  
- 10     **A Diamond and Gold Brooch** VAN CLEEF & ARPELS circa 1947  
Designed as three pavé-set diamond birds with ruby-set eyes perched on a gold branch extending gold feather tails, mounted in 18K yellow gold.  
Signed 'Van Cleef & Arpels.' With jeweler's mark and number. With French assay marks.  
**CHF 6,500-8,500**
  
- 11     **A Sapphire Ruby and Gold 'Duck' Pin** VAN CLEEF & ARPELS circa 1960  
Designed as a duck, the cabochon sapphire torso extending an 18K yellow gold head and feet, enhanced with a ruby-set eye, length 3 cm.  
Signed 'Van Cleef & Arpels' and numbered. With French assay marks.  
**CHF 2,000-3,000**
  
- 12     **An Onyx Diamond Emerald and Gold 'Cat' Pin** VAN CLEEF & ARPELS circa 1960  
Designed as a cat, the textured gold body decorated with a cabochon onyx torso, the head highlighted with an emerald eye and diamond accents, mounted in 18K yellow gold, length 5 cm.  
Signed 'Van Cleef & Arpels' and numbered. With French assay marks  
**CHF 3,800-4,500**
  
- 13     **A Rock Crystal, Gem-Set and Gold Pin** VAN CLEEF & ARPELS circa 1960  
Designed as a young girl, the rock crystal head enhanced with rubies and sapphires, decorated with 18K gold wire hair, mounted in 18K yellow gold.  
Signed and numbered. With French assay marks  
**CHF 4,000-6,000**
  
- 14     **A Diamond Ruby Emerald and Gold 'Rabbit' Pin** VAN CLEEF & ARPELS circa 1960  
Designed as a rabbit of twisted 18K yellow gold rope design, enhanced with an emerald-set eye, ruby nose and diamond accents, length 3.6 cm.  
Signed 'Van Cleef & Arpels' and numbered. With French assay marks  
**CHF 2,400-3,500**
  
- 15     **A Gold 'Duck' Pin** VAN CLEEF & ARPELS circa 1970  
Designed as a duck in textured 18K yellow gold, with an emerald-set eye and coral feet and bill, length 2.8 cm.  
**CHF 2,800-3,500**
  
- 16     **A Diamond Sapphire Ruby and Gold 'Scarecrow' Pin** VAN CLEEF & ARPELS circa 1965  
Of scarecrow design, the textured 18K yellow gold body and hat enhanced with a green agate head, cabochon ruby feet, with sapphire and diamond accents, length 5.7 cm.  
Signed 'Van Cleef & Arpels' and numbered. With French assay marks  
**CHF 4,500-6,000**
  
- 17     **A Diamond Sapphire Ruby and Gold 'Scarecrow' Pin** VAN CLEEF & ARPELS circa 1966  
Of scarecrow design, the textured 18K yellow gold body and hat enhanced with a green agate head, cabochon ruby feet, with sapphire and diamond accents, length 4.3 cm.  
Signed 'Van Cleef & Arpels' and numbered. With French assay marks  
**CHF 4,000-6,000**

9



10



11



12



13



14



15



16



17



- 18

**A Gold ‘Rabbit’ Pin** CARTIER 1950

Designed as a sculptured textured 18K gold rabbit, with ruby-set eyes, holding a carrot, length 3.5 cm.

Signed ‘Cartier’ with jeweler’s mark and numbered. With French assay marks

CHF 3,200-4,000
- 19

**A Diamond Ruby and Gold ‘Terrier’ Clip** CARTIER circa 1950

Designed as a fox-terrier, a textured 18K yellow gold body with a ruby-set eye and a diamond and onyx eye, length 3.5 cm.

Signed ‘Cartier’ with jeweler’s mark and numbered. With French assay marks

CHF 4,000-6,000
- 20

**A Diamond Ruby and Emerald ‘Turtle’ Pin** CARTIER circa 1960

Designed as a turtle, the cabochon emerald body extending textured gold feet with circular-cut diamond and ruby accents, the head enhanced with a circular-cut ruby and diamond accents, mounted in 18K yellow gold and platinum.

Signed ‘Cartier’ with jeweler’s mark and numbered. With French assay marks

CHF 13,000-18,000
- 21

**An Onyx and Gold ‘Bumble Bee’ Clip** HERMÈS circa 1960

Designed as a bumble bee of textured gold with onyx-set eyes, mounted in 18K white and yellow gold, 4 x 2.5 cm.

Signed ‘Hermès.’ With French assay marks

CHF 2,500-3,500
- 22

**A Diamond and Gold ‘Hummingbird’ Clip** CARTIER circa 1950

Designed as a hummingbird, the textured gold body decorated with circular-cut diamond accents and a rectangular-cut diamond eye, mounted in 18K gold, length 4.2 cm.

Signed ‘Cartier’

CHF 7,500-9,000
- 23

**A Diamond and Gold Bracelet** GÜBELIN circa 1930

Designed as three articulated bands of 18K yellow gold links, the central band highlighted with circular-cut diamonds, length 16.5 cm.

Signed ‘Gübelin’ and numbered. With French assay marks

CHF 11,000-15,000
- 24

**A Diamond Sapphire and Gold Bracelet** GÜBELIN circa 1930

Designed as three articulated lines of 18K yellow gold links, the central band enhanced with circular-cut diamonds and sapphires, length 18 cm.

Signed ‘Gübelin.’ With French assay marks

CHF 11,000-13,000
- 25

**A Diamond and Gold Bracelet** GÜBELIN circa 1930

Designed as three articulated bands of 18K yellow gold links, the central band highlighted with circular-cut diamonds, length 16.5 cm.

Signed ‘Gübelin’ and numbered. With French assay marks

CHF 11,000-15,000

18



20



19



21



22



24



23



25





26      **A Rock Crystal and Turquoise Necklace**  
Composed of spherical rock crystal beads, interspersed with spherical turquoise beads and white gold hourglass-shaped spacers, to the white gold clasp, mounted in 18K white gold, length 58 cm.  
CHF 1,800-2,500

27      **A Pair of Moonstone and Diamond Earclips**  
Each surmount designed as a circular cabochon moonstone within a circular-cut diamond surround, to the circular-cut diamond quatrefoil spacer, suspending a similarly set pear-shaped cabochon moonstone, mounted in 18K white gold, length 4.5 cm.  
CHF 3,000-4,000

PROPERTY OF A LADY

28      **A Diamond and Pearl Cross Pendant**  
Designed as the outline of a cross decorated with circular-cut diamonds, centrally enhanced with a cultured pearl, mounted in 18K white gold, length 4.4 cm.  
CHF 1,500-2,500

29      **A Pair of Diamond and Blue Topaz Earpendants** MARGHERITA BURGNER  
Each pavé-set diamond pear-shaped bombé surmount, suspending a series of circular-cut diamond collets terminating in a cabochon blue topaz drop, mounted in 18K white gold, length 6.4 cm.  
Signed 'Margherita Burgener'  
CHF 5,000-7,000

26



27



28



29



30      **A Diamond Ruby and Gold Necklace** CARTIER circa 1940  
Designed as a highly-flexible gold band collar, to the rigid gold bar decorated with circular-cut ruby and diamond accents within star settings, mounted in 18K yellow gold.  
Signed 'Cartier' and numbered  
**CHF 9,000-12,000**

31      **A Diamond Sapphire and Gold Bracelet** CARTIER circa 1940  
Designed as a flexible band of 18K textured yellow gold chevron links, to the central line of circular-cut sapphires, length 17 cm.  
Signed 'Cartier' and numbered  
**CHF 5,500-7,500**

32      **A Diamond and Ruby Clip** VANCLEEF & ARPELS circa 1960  
Designed as a floral branch decorated with circular-cut ruby and diamond florets and stylized gold leaves, mounted in 18K yellow gold, length 2.2 cm.  
Signed 'Van Cleef & Arpels' and numbered  
**CHF 5,500-8,500**

PROPERTY OF A LADY

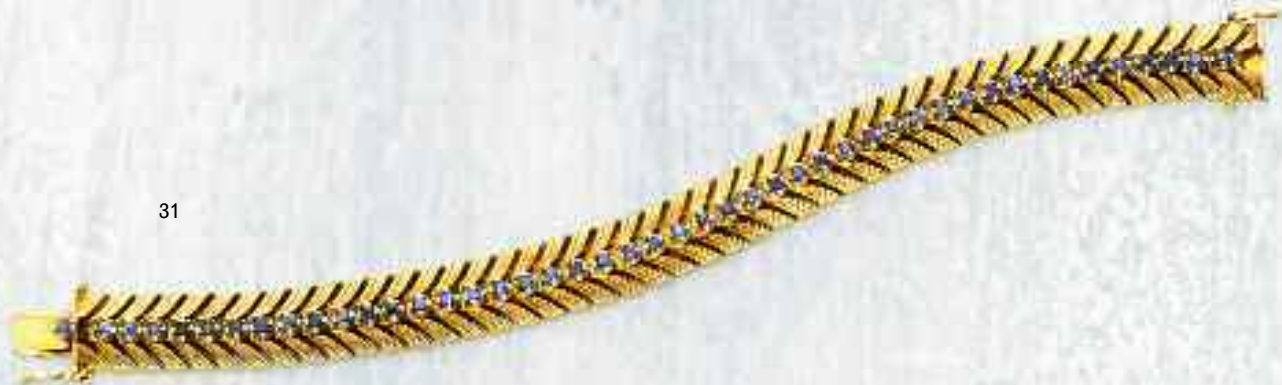
33      **A Diamond Ring**  
Centering upon a circular-cut diamond weighing approximately 5.07 carats, mounted in 18K yellow gold, size 5.  
With report no. 20013087301 dated 23 January 2001 from HRD Laboratory stating that the diamond is G colour and VS2 clarity.  
**CHF 65,000-75,000**

34      **A Diamond and Ruby Lady's Signet Ring** MELLERIO circa 1930  
The wide band set to the center with an oval-cut ruby, to the baguette-cut diamond scrolling shoulders and circular-cut diamond borders, mounted in platinum.  
With French assay marks  
**CHF 5,500-7,500**

30



31



32



33



34





PROPERTY OF A LADY

- 35

**A Cultured Pearl Necklace**

Designed as a series of thirty-seven graduated gray cultured pearls, measuring approximately 9.2 mm to 14.1 mm, to the 18K yellow gold clasp.

CHF 13,000-18,000
- 36

**A Malachite and Gold Key Ring** circa 1970

Designed as two oval and round motifs in malachite and 18K yellow gold connected by a chain link.

With French assay marks

CHF 500-1,000
- 37

**A Citrine and Gold Ring** BULGARI circa 1980

The front decorated with a triangular brown and yellow citrine to the plain 18K yellow gold tapering hoop, size 6.

Signed 'Bulgari' with Italian assay marks

CHF 20,000-30,000
- 38

**A Gold Bracelet** BOUCHERON circa 1940

Designed as a series of 18K yellow gold links.

Signed 'Boucheron'

CHF 1,500-2,500

35



36



37



38



PROPERTY OF A LADY

39      **A Ruby and Diamond Suite**    **PIAGET**

The gold chain of twisted rope design, suspending a bombé pendant with pavé-set diamonds and rubies, to the circular-cut diamond surround, mounted in 18K yellow gold; earclips en suite; necklace length 42 cm., earclips length 2 cm.

Signed 'Piaget'

**CHF   3,000-4,000**

PROPERTY OF A LADY

40      **A Ruby Sapphire Diamond and Gold Brooch**

Designed as an openwork gold basket, suspended from a twisted rope gold ribbon bow, with circular-cut diamond accents, enhanced by circular-cut sapphire, ruby and diamond flower motifs, extending stylized gold leaves, mounted in 18K gold, length 4.5 cm.

**CHF   700-1,200**

PROPERTY OF A LADY

41      **A Coral Diamond and Gold Bracelet**

Designed as a series of oval coral plaques within a gold border of twisted rope design, interspersed with smaller similarly shaped gold links enhanced by circular-cut diamonds, mounted in 18K yellow gold, length 7 cm.

With French assay marks

**CHF   2,500-4,000**

PROPERTY OF A LADY

42      **A Lady's Gold Wristwatch**    **PIAGET**

The rectangular white dial with Arabic 3, 6 and 9 number, to the gold bezel with ridges and pavé-set diamond lug, extending a multi-strand gold link fringe tassel bracelet gathered by a pavé-set diamond ring, mounted in 18K yellow gold (With an additional gold link bracelet and 7 straps of various colours).

**CHF   3,000-4,000**



39



40



41



42





43      **A 'Happy Diamond' Pendant** CHOPARD  
Of geometric motif, the rectangular 18K white gold pendant with circular motifs, enhanced with circular-cut diamond collets, mounted in 18K white gold, 10 x 17 cm.  
Signed 'Chopard Happy Diamond' and numbered. With Swiss assay marks  
**CHF 4,800-6,000**

44      **A Diamond and Pearl Pendant** CHOPARD  
The spectacle-set diamond and white gold chain joined at the front with a circular shaped glazed compartment containing a free-moving circular-cut diamond collet within a pavé-set diamond surround, suspending a similarly set white gold chain fringe terminating in a white cultured pearl, mounted in 18K white gold.  
**CHF 7,000-9,000**

PROPERTY OF A LADY

45      **A Pair of Diamond and Smoky Topaz Earrings**  
Each designed as a pear-shaped rose-cut smoky topaz within a pavé-set diamond surround, to the rigid fine pavé-set diamond line surmont, mounted in 18K white gold, length 7.2 cm.  
**CHF 2,000-3,000**

46      **A Diamond and Gold Wristwatch** VANCLEEF & ARPELS  
The inclined rectangular dial with quartz movement, enclosed in a circular-cut diamond and polished 18K white gold padlock, to the black strap.  
Signed 'Van Cleef & Arpels' and numbered with Swiss assay marks  
**CHF 11,000-13,000**

PROPERTY OF A LADY

47      **A Diamond and Onyx Clip** VANCLEEF & ARPELS circa 1990  
Of flowerhead design, centering upon a circular-cut diamond cluster extending bombé onyx petals, mounted in 18K white gold, length 3 cm.  
Signed and numbered. With French assay marks  
**CHF 3,600-4,500**

43



44



45



46



47



PROPERTY OF A LADY

48      **A Gold Bracelet**  
Designed as a flexible woven gold band, mounted in rose and yellow gold.  
**CHF 1,800-2,500**

PROPERTY OF A LADY

49      **A Gold Bracelet**  
Designed as a flexible woven gold band, mounted in rose and yellow gold.  
**CHF 1,800-2,500**

PROPERTY OF A LADY

50      **A Gold Necklace/Belt**  
Of highly flexible twisted rope design, terminating in two yellow and white gold tassels,  
to the gold detachable clasp, mounted in 18K yellow and white gold, 103 cm.  
**CHF 2,000-2,500**

PROPERTY OF A LADY

51      **A Gold and Wood Bangle VANCLEEF & ARPELS**  
A wood bangle enhanced with 18K yellow gold plaques, interior diameter 7 cm.  
Signed 'Van Cleef & Arpels'  
**CHF 1,500-2,000**

49

48

51

50





52      **A Pair of Cultured Pearl and Diamond Earpendants** MARGHERITA BURGNER  
Each designed as a scrolling pavé-set diamond ribbon terminating in a brown cultured pearl measuring approximately 14.5 mm, mounted in 18K yellow gold, length 8.5 cm.  
Signed 'Margherita Burgener'  
CHF 9,000-12,000

53      **An Amethyst and Diamond 'Flower' Ring**  
Off flowerhead design, centering upon a circular-cut diamond cluster pistil, extending an overlapping series of flexible amethyst petals, to the plain hoop, mounted in 18K yellow gold, size 6.  
CHF 5,000-7,000

54      **An Amethyst and Diamond Ring**  
Set to the center with an oval-cut amethyst, to the undulating pavé-set diamond surround, mounted in 18K yellow gold, size 7 1/2.  
CHF 4,000-5,000

PROPERTY OF A LADY

55      **A Gem-Set Diamond and Gold Bangle** VACHERON CONSTANTIN  
Designed as a series of bombé gold links, the front enhanced with cabochon amethyst and pink tourmaline, mounted in 18K yellow gold, diameter 6.7 cm.  
Signed 'Vacheron Constantin'  
CHF 1,500-2,500

PROPERTY OF A LADY

56      **A Pair of Diamond and Gold Hoop Earrings** CARTIER  
Each designed as a concentric gold open hoop, the front and the interior back entirely set with circular-cut diamonds, mounted in 18K yellow gold.  
Signed 'Cartier'  
CHF 2,000-3,000

52



53



54



56



55



57 **A Diamond and Ruby Necklace**

Designed as a series of thirteen rose-cut oval rubies interspersed with faceted ruby beads and rose-cut diamond accents, to the faceted ruby bead backchain, the front suspending a pear-shaped ruby drop, mounted in yellow gold, length 42 cm.

CHF 19,000-24,000

PROPERTY OF A LADY

58 **A Rubelite and Diamond 'Snake' Brooch**

Centering upon an oval-cut rubelite, to the pavé-set diamond surround of snake design, mounted in 18K gold and silver, length 7 cm.

CHF 6,000-9,000

59 **A Rubelite and Gold Ring BOIVIN** circa 1980

Set with an oval-cut rubelite within an 18K yellow gold surround, to the wide ridged 18K white gold hoop, size 6 1/4.

Jeweler's mark for 'René Boivin.' With French assay marks

CHF 8,000-12,000

57



58



59





PROPERTY OF A LADY

**60      A Gold Necklace and Bracelet Suite   BULGARI**  
Designed as an alternating series of pavé-set diamond yellow gold and blackened white gold curb-link chain links, mounted in 18K gold; necklace length 37.5 cm, bracelet length 18.5 cm.  
Signed 'Bulgari NY'  
**CHF   5,000-8,000**

**61      A Diamond and Gold Pin   CARTIER** circa 1930  
Designed as a black and red lacquered hand holding a sculpted 18K yellow gold flower enhanced with a rose-cut old-cut diamond.  
Signed 'Cartier' and numbered. With French assay marks  
**CHF   8,000-12,000**

PROPERTY OF A GENTLEMAN

**62      A Diamond Ring   SUZANNEBELPERRON** circa 1940  
The front of fluted bombé design, centrally enhanced with a diagonal panel of old-cut diamonds, mounted in 18K yellow gold, size 6 1/2.  
**CHF   8,000-12,000**



60



61



62



PROPERTY OF A LADY

**63      A Set of Three 'Ciao' Gold Necklaces MARINA B**

Designed as a line of yellow, rose and white gold bombé links suspending a graduated series of gold bombé heart-shaped fringe links mounted in 18K white, yellow and rose gold, length 42 cm.  
Signed 'Marina B'

**CHF 12,000-16,000**

**64      A Pair of Diamond and Cultured Pearl Earclips    circa 1980**

Each of flowerhead design, centering upon a cultured pearl, measuring approximately 15.6 mm and 15.5 mm, extending sculpted pavé-set diamond petals, mounted in 18K yellow gold.  
With French assay marks

**CHF 10,000-12,000**

PROPERTY OF A GENTLEMAN

**65      A Diamond Ring BOUCHERON    circa 1930**

Of bombé design, enhanced with three old-cut diamonds, mounted in 18K yellow gold, size 6.  
Signed. With French assay marks

**CHF 3,300-4,500**



63



64



65





PROPERTY OF A LADY

66      **A Suite of Gold Jewelry**    **CARTIER**

Comprising a necklace, designed as a series of tapering flexible gold links; a bracelet and a pair of ear clips en suite, mounted in 18K white and yellow gold, necklace 45.5 cm., bracelet 22.5 cm.

Signed 'Cartier' and numbered 719864, 788667, 781225

**CHF 4,000-6,000**

PROPERTY OF A GENTLEMAN

67      **A Diamond, Enamel and Gold 'Pegasus' Brooch**    **DAVID WEBB**

The brooch/pendant designed as a black enamel and gold pegasus, enhanced with a pear-shaped ruby eye, the textured gold wings and tail enhanced with circular-cut diamonds, mounted in 18K yellow gold and platinum.

Signed 'Webb' for David Webb

**CHF 8,500-10,000**

PROPERTY OF A LADY

68      **A Diamond and Gold Watch**    **PIAGET**

Of jewelled manual wind movement, the oval gold dial with circular-cut diamond chapters, within a circular-cut diamond surround, to the woven gold link bracelet, mounted in 18K yellow gold.

Signed 'PIAGET 750' and numbered 9826 N92-275946.

**CHF 1,200-2,000**

A large, oval-shaped necklace made of many small, gold-colored, ribbed links, displayed against a textured, reddish-orange background. The necklace is composed of numerous small, cylindrical links that create a dense, textured appearance. It is laid out in a large oval shape, with a small clasp visible at the top. The background is a solid, textured reddish-orange color.

67

A black horse sculpture with a golden mane and tail, wearing a white mask and holding a golden bell. The horse is depicted in a dynamic, rearing pose. The background is a solid orange color.

66

PROPERTY OF A GENTLEMAN

- 69

**A Diamond and Gold Necklace MARINA B** circa 1986

Designed as a semi-rigid springband collar in blackened yellow gold with scrolling pavé-set diamond motifs, mounted in 18K yellow gold.

Signed 'Marina B,' numbered and jeweler's mark. With French assay marks

**CHF 30,000-35,000**
- 70

**A Diamond and Gold Suite MARINA B**

Designed as a semi-rigid springband collar necklace enhanced with scrolling pavé-set diamond motifs, earpendants en suite, mounted in 18K yellow gold.

Signed and numbered

**CHF 38,000-45,000**
- 71

**NO LOT**
- 72

**A Diamond and Gold Clip BOUCHERON** circa 1955

Designed as an articulated shield form entirely decorated with old-cut diamonds, centering upon a similarly-set tapering three-tier link, mounted in 18K yellow gold (can also be worn as a pendant).

With jeweler's mark for 'Boucheron.' With French assay marks

**CHF 10,000-12,000**



70

69

72

70





PROPERTY OF A LADY

- 73     **An Emerald and Diamond Ring**   CHAUMET
- Set to the center with a rectangular-cut emerald, framed by pear-shaped diamond shoulders, mounted in 18K yellow gold, size 5.
- Signed 'Chaumet'
- CHF   12,000-16,000

PROPERTY OF A LADY

- 74     **A Diamond and Gold Ring**
- The wide gold band decorated in the front with three rows of invisibly-set square-cut diamonds, mounted in 18K yellow gold, size 6.
- CHF   1,500-2,000

PROPERTY OF A LADY

- 75     **A Gold Necklace**
- Designed as a flexible longchain series of 18K yellow gold links, length 81 cm.
- CHF   800-1,500

PROPERTY OF A LADY

- 76     **A Gold and Enamel Bracelet**   SCHLUMBERGER   circa 1960
- The articulated bracelet, each bombé link decorated with translucent green enamel panels enhanced with a gold 'X', within gold ribs, mounted in 18K yellow gold, diameter 5.5 cm.
- Signed 'Schlumberger Paris.'
- CHF   9,000-11,000

PROPERTY OF A LADY

- 77     **A Lady's Gold 'Tubogas' Bracelet Watch**   BULGARI
- The circular black diamond dial with Arabic 12 and 6 baton markers, to an internal sprung tubogas two-coloured gold bracelet, the bezel engraved with repeated Bulgari signature, mounted in 18K gold.
- The case back and bracelet signed 'Bulgari.'
- CHF   2,000-3,000

73



74



75



76



77



78      **An Agate, Rubelite and Gold Necklace**  
Designed as three swagged agate bead strands interspersed with rubelite beads and gold spacers, to the gold bar clasp accented with a larger rubelite bead, mounted in 18K yellow gold, length 40 cm.  
**CHF 4,500-6,000**

PROPERTY OF A GENTLEMAN

79      **An Enamel and Gold 'Snake' Bracelet**  
Designed as a coiled gold and white enamel snake bracelet of articulated flexible design, mounted in 18K yellow gold.  
**CHF 9,500-11,000**

PROPERTY OF A GENTLEMAN

80      **A Diamond, Enamel and Gold Ring** DAVID WEBB  
Designed as a white enamel and circular-cut diamond ring of geometric design, mounted in 18K yellow gold, size 5 1/2.  
Signed 'Webb' for David Webb.  
**CHF 5,000-7,000**

PROPERTY OF A GENTLEMAN

81      **A Diamond Enamel and Gold Ring** DAVID WEBB  
Designed as a white enamel and circular-cut diamond ring of geometric design, mounted in 18K yellow gold, size 6.  
Signed 'Webb' for David Webb  
**CHF 7,000-9,000**

82      **A Gold 'Lion' Ring** DAVID WEBB  
The front designed as a sculpted gold lion's head with ruby-set eyes and a textured gold mane, to the tapering hoop, mounted in 18K yellow gold, size 6.  
Signed 'David Webb'  
**CHF 4,000-6,000**

83      **A Pair of Gold and Diamond Earclips** DAVID WEBB  
Each designed as a sculpted flowerhead, to the three circular-cut diamond accents, mounted in 18K yellow gold, diameter 2.5 cm.  
Signed 'Webb' for David Webb  
**CHF 3,000-5,000**





78



79



80



81



82



83





84      **A Diamond and Gold Pendant CHOPARD**  
Designed as an 18K gold bombé heart-shaped pendant, inscribed with 'LOVE' set with circular-cut diamonds, enhanced by a glazed compartment containing a free floating circular-cut diamond collet, to the belcher link neckchain, mounted in 18K yellow gold, chain length 60 cm; pendant length 3.5 cm.  
Signed 'Chopard' and numbered. With Swiss assay marks  
**CHF 7,000-9,000**

PROPERTY OF A LADY

85      **A Pair of Tourmaline and Citrine Earrings MARINA B**  
Each circular bombé citrine suspending a larger circular bombé pink tourmaline, mounted in 18K yellow gold. (accompanied by interchangeable cabochon citrine and green tourmaline)  
Signed 'Marina B'  
**CHF 1,400-2,000**

PROPERTY OF A LADY

86      **A Diamond Bracelet**  
Designed as a single graduated series of circular-cut diamond collets, mounted in 18K yellow gold.  
**CHF 10,000-15,000**

87      **A Gold Wristwatch VANCLEEF & ARPELS**  
The inclined rectangular dial with quartz movement enclosed in a polished 18K yellow gold padlock and three-row gold link bracelet.  
Signed 'Van Cleef & Arpels' and numbered. With Swiss assay marks  
**CHF 11,000-13,000**



84

85

86

87

PROPERTY OF A LADY

- 88      **A Ruby and Diamond Necklace**  
Centering upon a pear-shaped ruby, within a graduated circular-cut diamond surround,  
to the flexible gold link chain, mounted in 18K white gold,  
**CHF 2,200-3,200**

PROPERTY OF A LADY

- 89      **A Ruby and Diamond Necklace**  
The front designed as a series of oval-cut rubies and circular-cut diamond foliate links,  
to the flexible 18K white gold chain.  
**CHF 3,000-5,000**

PROPERTY OF A LADY

- 90      **A Pair of Diamond Earrings**  
Each circular-cut diamond weighing approximately 1.50 carats, mounted in white gold.  
With reports no. 16942104 and 16942113 dated 2 April 2008 from the Gemological Institute of America stating  
that the diamonds are I colour with VS1 and VS2 clarity.  
**CHF 12,000-15,000**

PROPERTY OF A LADY

- 91      **An Unmounted Diamond**  
The circular-cut diamond weighing approximately 3.77 carats.  
**CHF 12,000-15,000**

PROPERTY OF A GENTLEMAN

- 92      **A Diamond Ring**  
Centering upon a circular-cut diamond weighing approximately 3.76 carats, to the baguette-  
cut diamond shoulders, mounted in platinum.  
With French assay marks.  
With report no. 2008125649/1 dated 7 February 2008 from CCIP Laboratory stating that the diamond is D  
colour and VVS1 clarity.  
**CHF 32,000-48,000**

PROPERTY OF A LADY

- 93      **A Diamond Bracelet**  
Designed as a twin flexible white gold link chain, centering upon a series of circular-cut  
diamond clusters, mounted in 18K white gold, 18.5 cm.  
**CHF 3,500-5,000**





90

91

89

92

88

93



94      **A Cultured Pearl and Diamond Necklace**

Designed as multiple fine trace link chains, spectacle-set with circular-cut diamond collets and pavé-set diamond bombé boules, the front joined by oval-shaped pavé-set diamond hoops, suspending a fringe of three cultured pearls interspersed with bombé pavé-set diamond spacers, mounted in 18K white gold, pendant length 7.5 cm.

CHF 15,000-18,000

95      **A Rubelite and Diamond Ring** MARGHERITA BURGNER

Of flowerhead design, set to the center with an oval-cut rubelite, weighing approximately 5.23 carats, extending circular-cut diamond petals, enhanced with circular-cut black diamonds, mounted in 18K white gold, size 7.

Signed 'Margherita Burgner'

CHF 7,000-8,000

PROPERTY OF A LADY

96      **A Diamond and Pearl Penguin Brooch**

Designed as a penguin, entirely decorated with black diamonds and a baroque pearl torso, standing on a pavé-set diamond ice motif, mounted in 18K white gold, length 4.2 cm.

CHF 2,500-3,500

97      **A Pair of Pearl and Diamond Earclips** MARGHERITA BURGNER

Each designed as a white cultured pearl measuring approximately 14.5 mm, to the tapering bombé circular-cut white and black diamond half-hoop, mounted in 18K white gold.

Signed 'Margherita Burgner'

CHF 5,000-6,000



94

96



95



97



98      **An Art Nouveau Citrine Garnet and Enamel Brooch** EUGENE FEUILLATRE

Of openwork oval outline, decorated with enamelled feathers, centrally enhanced with a citrine and four garnets, 4.3 x 3 cm .

Signed 'Feuillatre' with jeweler's mark and French assay marks

CHF 7,500-10,000

99      **A Diamond Ring** circa 1960

Set with three circular-cut diamonds weighing approximately 2.60 carats in total, within a circular-cut diamond surround, mounted in 18K white gold, size 5 3/4.

With French assay marks

CHF 9,000-11,000

PROPERTY OF A GENTLEMAN

100      **A Pearl and Diamond Bracelet** circa 1920

Designed as a slightly graduating series of fifteen pearls interspersed with seed pearls, to the lozenge-shaped clasp enhanced with old-cut diamonds, mounted in platinum.

CHF 4,800-6,500

101      **A Chrysoprase Mother of Pearl and Gold Suite** LUCIEN FALIZE circa 1880

Comprising a pendant, designed as a gold scrolling leaf, enhanced with mother-of-pearl and cabochon chrysoprase, suspending a fresh-water pearl, mounted in yellow gold; a pair of similarly designed brooches en suite, pendant length 7 cm.

With French assay marks

CHF 11,000-14,000

102      **NO LOT**



99



98



100



101

101



The designer Emanuela Burgener signs her creations in the name of Margherita, her eldest daughter, to whom her jewels are dedicated. Her designs are strikingly modern and fashionable yet maintain the noble traditions of classical Italian jewellery with the exceptional and meticulous craftsmanship established by Margherita's grandfather in 1966 when he founded the Valenza workshop, in northern Italy, where the family continues to work exclusively.

A passion and love for the lively colours of aquamarine and other coloured precious gemstones, selected for their highest quality from all over the world, underlie Margherita Burgener's creations.

- 103      **An Aquamarine and Diamond Pendant Necklace** MARGHERITA BURGNER  
The front suspending a cascading series of circular-cut diamond stars and a pear-shaped aquamarine drop weighing approximately 31.40 carats, to the fine trace-link double strand chain, mounted in 18K white gold.  
**CHF 6,000-8,000**
- 104      **A Pair of Sapphire, Diamond and Aquamarine Earpendants** MARGHERITA BURGNER  
Each pear-shaped sapphire surmount within a circular-cut diamond surround, to the three flexible rows of alternating pear-shaped sapphires and circular-cut diamonds, suspending a rectangular-cut aquamarine, mounted in 18K white gold, length 8cm.  
The total weight of the aquamarines is 63.84 carats.  
**CHF 15,000-20,000**
- 105      **An Aquamarine, Sapphire and Diamond Ring** MARGHERITA BURGNER  
Set to the center with a rectangular-cut aquamarine weighing approximately 52.02 carats, with a sculpted mount entirely decorated with circular-cut diamonds and sapphires, to the plain hoop, mounted in 18K white gold, size 7 1/2.  
Signed 'Margherita Burgener'  
**CHF 11,000-15,000**
- 106      **A Sapphire and Diamond Bracelet**  
Designed as a wide articulated band consisting of five rows of oval-cut sapphires to the pavé-set diamond borders, mounted in 18K white gold, length 17.5 cm.  
**CHF 9,000-11,000**

103



104



105



106





107      **A Pink Sapphire and Diamond Necklace**  
Designed as series of oval-cut pink sapphire panels interspersed with overlapping pavé-set diamond hoops, mounted in 18K white gold, diameter 12.8 cm.  
**CHF 8,000-10,000**

108      **A Pair of Diamond Earpendants**  
Each circular-cut diamond floret surmount suspending a pavé-set diamond hoop to the similarly-set diamond fringes, mounted in 18K white gold, length 6.3 cm.  
**CHF 3,000-5,000**

PROPERTY OF A LADY

109      **A Diamond Eternity Band**  
Of eternity band design, composed of a series of twenty-one rectangular-cut diamonds, mounted in platinum, size 5 1/2.  
**CHF 4,000-6,000**

PROPERTY OF A LADY

110      **A Diamond Ring**  
Set to the center with a rectangular-cut diamond weighing approximately 4.05 carats, to the tapered-baguette diamond shoulders, mounted in platinum, size 5 1/2.  
With report no. 16868857 dated 21 February 2008 from the Gemological Institute of America stating the diamond is J colour and VS1 clarity.  
**CHF 30,000-50,000**

PROPERTY OF A GENTLEMAN

111      **An Elegant Diamond Bracelet**  
Designed as a series of openwork panels of geometric design set throughout with circular-cut diamonds, each alternating panel centrally enhanced with three circular-cut diamonds, mounted in platinum, length 18 cm.  
**CHF 8,000-10,000**

107



108



109



110



111



112      **An Art Deco Diamond Platinum and Gold Charm Necklace** CARTIER  
The platinum and 18K gold link necklace suspending eleven gem-set charms (a hat, house, bird, car, etc), one charm signed 'Cartier'.  
CHF 15,000-20,000

113      **A Diamond Agate and Gold Lapel Clip** VANCLEEF & ARPELS circa 1930  
Of shield-shape design, decorated with old-cut diamonds and gray agate fluted motifs, mounted in 18K gold.  
Signed 'Van Cleef & Arpels' and numbered. With French assay marks  
CHF 3,000-4,500

PROPERTY OF A GENTLEMAN

114      **A Diamond Ring**  
Centering upon a circular-cut diamond weighing approximately 2.62 carats, mounted in white gold and platinum.  
With report no. 2008125649/3 dated 7 February 2008 from CCIP Laboratory stating that the diamond is I colour and VS2 clarity.  
CHF 13,000-19,000

115      **A Diamond Ring**  
Set to the center with a cushion-shaped old-cut diamond, within an openwork old-cut diamond surround, mounted in 18K white gold, size 5 3/4.  
CHF 22,000-28,000



112



113



114



115



PROPERTY OF A LADY

- 116

**A Platinum and Diamond Necklace**

The flexible collar composed of five rows of circular-cut diamonds, joined at the front with a pavé-set diamond belt buckle design, mounted in platinum, length 47 cm.

**CHF 15,000-20,000**

SOLD TO BENEFIT A FRENCH CHARITABLE ASSOCIATION

- 117

**A Diamond and Ruby Brooch** circa 1950

Designed as a pair of birds perched on a branch entirely decorated with circular-cut diamonds and a ruby-set eye, with baguette-cut diamond accents, mounted in platinum and 18K white gold, 5 cm.

With French assay marks

**CHF 6,500-8,500**

- 118

**A Diamond Ring**

Centering upon an old-cut diamond weighing approximately 2.32 carats, to the plain wide hoop, mounted in 18K white gold, size 6.

With French assay marks

**CHF 7,000-9,000**

PROPERTY OF A LADY

- 119

**A Pair of Tanzanite and Diamond Earclips**

Each scrolling circular-cut diamond surrmount suspending an oval-cut tanzanite, mounted in 18K white gold, length 2.5 cm.

**CHF 5,000-8,000**



116



117



119



118





- 120

**A Lady's Sapphire and Gold Wristwatch** VANCLEEF&ARPELS circa 1950

The circular case and dial extending a bracelet designed as a series of shell-shaped textured gold links enhanced with a sapphire accent, mounted in 18K yellow gold, length 17.5 cm.

Signed 'Van Cleef & Arpels' and numbered. With French assay marks

CHF 6,500-8,500
- 121

**A Lady's Ruby Sapphire and Gold Wristwatch** LEROY circa 1935

The inclined circular case designed as a cornucopia, decorated with cabochon rubies and sapphires, extending a gold link bracelet enhanced with ruby accents, mounted in 18K yellow gold.

Signed dial and case. With French assay marks

CHF 5,500-8,500
- 122

**A Diamond and Gold Brooch** VANCLEEF&ARPELS circa 1940

Designed as a scrolling gold ribbon with star-shaped settings enhanced with circular-cut diamonds and gold boules enhanced with circular-cut diamonds, to the graduated circular-cut diamond crescent enhanced with a border of circular-cut diamond and gold boules, mounted in 18K yellow gold.

Signed 'Van Cleef & Arpels' and numbered

CHF 12,000-18,000
- 123

**A Diamond Sapphire and Gold Brooch and Earrings** VANCLEEF&ARPELS circa 1940

Comprising a brooch, designed as a pierced bombé gold dome centering upon a circular-cut sapphire and diamond floret, decorated with circular-cut diamonds and sapphires, mounted in 18K yellow gold; earclips en suite, brooch 3.5 cm, earclips 2.5 cm.

Signed 'Van Cleef & Arpels'

CHF 15,000-20,000
- 124

**A Diamond and Gold Bangle** CARTIER circa 1940

Of hinged design, the front decorated with three sculpted ribbon bow motifs enhanced with circular-cut diamonds, mounted in 18K yellow gold (each bow motif can be worn as a lapel clip).

Signed 'Cartier' with jeweler's mark. With French assay marks

CHF 46,000-56,000

120



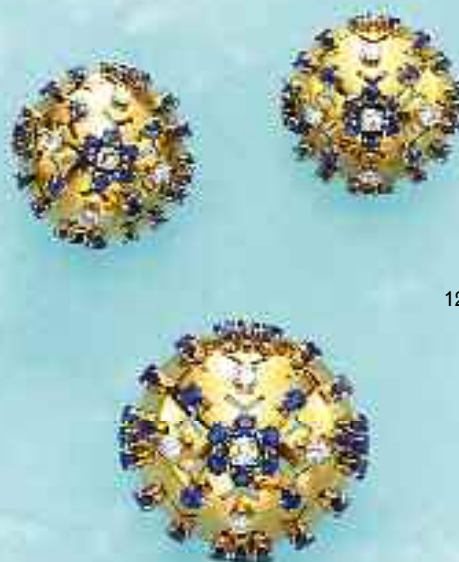
121



122



123



124



125      **A Pair of Gold Lapel Clips** CARTIER circa 1945  
Each of shield design, highlighted with gold wire and guilloché lines, mounted in 14K yellow and rose gold, 3.2 cm.  
Signed 'Cartier' on one clip  
**CHF 2,500-3,500**

PROPERTY OF A LADY

126      **A Pair of Ruby Citrine Rock Crystal and Gold Earclips** SUZANNE BELLPERRON circa 1940  
Each of floral and foliate motif decorated with marquise-cut rock crystal and citrine, with cabochon rubies, mounted in 18K yellow gold, 3.2 cm.  
**CHF 13,000-18,000**

PROPERTY OF A LADY

127      **A Pair of Diamond Ruby and Gold Lapel Clips** SUZANNE BELLPERRON circa 1940  
Designed as a foxglove flower, decorated with marquise-cut fancy coloured diamonds and cabochon rubies, mounted in 18K yellow gold.  
With jeweler's marks for Goene & Darde. With French assay marks  
**CHF 40,000-60,000**

128      **A Diamond and Ruby Lapel Clip** CHAUMET circa 1935  
Of geometric design, the 18K rose gold semi-circular stepped plaque highlighted with circular-cut diamonds and channel-set calibr  -cut rubies.  
Signed 'Chaumet'  
**CHF 3,000-5,000**



125



126



127



128



129      **A Pair of Gold and Enamel Clips** CARTIER  
Designed as the King and the Jack of Hearts in white, blue, black and red enamel, each adorned with rose-cut diamonds, mounted in 18K yellow gold and platinum, length 3.4 and 3.8 cm.  
Signed 'Cartier Paris' on the king's clip. With French assay marks  
**CHF 24,000-30,000**

130      **A Lady's Gold Wristwatch** LONGINES circa 1940  
The bracelet is designed as a tapering series of gadroon decorated round forms, to the square-faced concealed watch, mounted in 18K yellow gold, length 17 cm.  
Signed dial  
**CHF 5,000-7,000**

PROPERTY OF AN EUROPEAN ESTATE

131      **A Pair of Aquamarine Lapis-Lazuli and Coral Earpendants** CARTIER circa 1950  
Each circular-cut aquamarine bombé surmount suspending a hoop designed as alternating cabochon lapis lazuli and coral plaques, mounted in 18K yellow gold, length 7.3 cm.  
(One hoop is missing).  
With jeweler's mark for 'Cartier' and numbered. With French assay marks  
**CHF 3,200-4,500**

PROPERTY OF AN EUROPEAN ESTATE

132      **An Aquamarine Lapis Lazuli and Coral Pendant** CARTIER circa 1950  
Of rectangular design, centering upon a rectangular-cut aquamarine within a surround of cabochon coral and lapis lazuli plaques, mounted in 18K yellow gold, 4.5 x 3.6 cm.  
With jeweler's mark for 'Cartier' and numbered. With French assay marks  
**CHF 5,000-7,000**

129



130



132



131





PROPERTY OF AN EUROPEAN ESTATE

- 133

**A Diamond and Gold Vanity Case** CARTIER circa 1945

Of rectangular form, the line engraved 18K yellow gold case enhanced with a pavé-set diamond turtle. A lipstick case, powder box and mirror held inside, to the twisted rope design chain, 9x6.7x1.8 cm.

Signed 'Cartier' with jeweler's mark and numbered. With French assay marks

CHF 6,500-9,500

PROPERTY OF AN EUROPEAN ESTATE

- 134

**A Pair of Diamond Turquoise and Amethyst Earpendants** CARTIER circa 1960

Each surmount designed as an openwork bombé cluster of oval-cut amethysts, cabochon turquoise and circular-cut diamonds, suspending a pear-shaped pendant of similar design, mounted in 18K yellow gold and platinum; (One surmount is missing).

Signed 'Cartier' and numbered. With French assay marks

CHF 5,000-7,000

PROPERTY OF AN EUROPEAN ESTATE

- 135

**A Diamond Amethyst and Turquoise 'Turtle' Clip** CARTIER circa 1950

Designed as a turtle, the bombé body decorated with a pear-shaped amethyst floral motif to the cabochon turquoise surround, with diamond accents, the head enhanced with an oval-cut amethyst, the neck and feet enhanced with pavé-set diamonds, mounted in textured 18K yellow gold, length 6.2 cm.

Signed 'Cartier.' With French assay marks

CHF 13,000-20,000

PROPERTY OF AN EUROPEAN ESTATE

- 136

**An Amethyst and Turquoise Ring** CARTIER circa 1950

Of cross-over design, the pavé-set and baguette-cut diamond terminal enhanced with a pear-shaped cabochon turquoise and amethyst, mounted in 18K yellow gold and platinum.

Signed 'Cartier' with jeweler's mark and numbered. With French assay marks

CHF 5,000-7,000

133



135



134



136



137      **A Diamond and Gold Necklace** TIFFANY circa 1960  
Designed as a collar of textured yellow gold chevron links, the front enhanced by a detachable ribbon bow decorated with circular-cut diamonds (can be worn as a brooch), necklace length 37 cm.  
Signed 'Tiffany & Co.'  
**CHF 15,000-20,000**

PROPERTY OF AN EUROPEAN ESTATE

138      **A Pair of Diamond and Gold Earclips** CARTIER  
Each surmount designed as a stylized gold foliate motif, to the circular-cut diamond border, suspending three graduating gold wire hoops, punctuated by circular-cut diamond collets, mounted in 18K yellow gold, length 7 cm.  
Signed 'Cartier' and numbered with jeweler's mark. With French assay marks  
**CHF 10,000-15,000**

PROPERTY OF AN EUROPEAN ESTATE

139      **A Pair of Diamond and Ruby Earclips** CARTIER circa 1950  
Each of foliate design, entirely decorated with circular-cut rubies and diamonds, mounted in 18K yellow gold, length 4.2 cm.  
With jeweler's mark for 'Cartier' and numbered. With French assay marks  
**CHF 15,000-20,000**

PROPERTY OF AN EUROPEAN ESTATE

140      **A Diamond and Ruby Clip** CARTIER circa 1950  
Of rose design, the central petals decorated with circular-cut rubies enhanced with a single circular-cut diamond, to the exterior pavé-set diamond petals, extending a baguette-cut diamond stem, mounted in platinum and 18K yellow gold, length 4.2 cm.  
Signed 'Cartier' with jeweler's mark and numbered. With French assay marks  
**CHF 16,000-24,000**



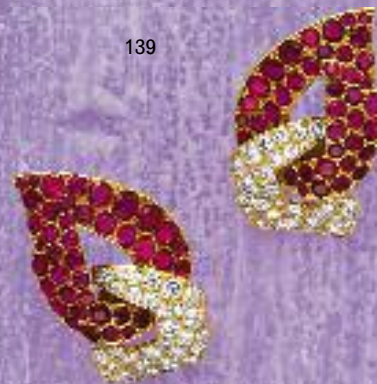
137



138



139



140





- 141

**A Platinum, Diamond and Gem-Set Charm Necklace**

The platinum link chain suspending twenty-eight gem and diamond-set charms of different design (six with polychrome enamel detail), mounted in platinum and gold.

CHF 30,000-40,000
- 142

**A Diamond and Onyx Bangle** LACLOCHE circa 1940

The rigid platinum bangle engraved with pavé-set diamonds and a central line of calibré-cut onyx plaques, mounted in platinum, diameter 8.5 cm.

With French assay marks

CHF 16,000-20,000
- 143

**A Diamond Brooch** circa 1930

Of buckle design, enhanced with circular and baguette-cut diamonds, centrally enhanced with two larger pear-shaped and two shield-shaped diamonds, mounted in platinum.

CHF 15,000-20,000



144      **A Cultured Pearl and Turquoise Necklace**   VAN CLEEF & ARPELS

Designed as two swagged slightly graduated strands of cultured pearls measuring approximately 9.0 mm to 9.8 mm, joined by a cabochon turquoise clasp within a circular-cut diamond surround and textured gold border, mounted in 18K yellow gold, length 67 cm.

Stamped 'VCA NY' for Van Cleef & Arpels

**CHF   7,000-10,000**

PROPERTY OF A LADY

145      **A Pair of Turquoise and Diamond Earclips**

Each set to the center with an oval cabochon turquoise within a two-row circular-cut diamond surround, mounted in 18K white gold.

**CHF   6,000-8,000**

146      **An Aquamarine and Gold Ring**   BUCCELLATI

Set to the center with an rectangular-cut aquamarine, to the openwork mount of foliate design, mounted in 18K yellow gold, size 5.

Signed 'Buccellati'

**CHF   8,000-10,000**

147      **A Gold Turquoise and Diamond Bracelet**   DAVID WEBB

The front of foliate design, decorated with three cabochon turquoise and circular-cut diamond accents to the twisted gold bracelet enhanced with gold boule detail, mounted in 18K yellow gold, diameter 6.5 cm.

Signed 'David Webb'

**CHF   15,000-20,000**



144



145



147



146





PROPERTY OF A LADY

148      **A Diamond Tourmaline and Gold Clip**   **CARTIER**   circa 1950  
Of flowerhead design, centering upon a circular-cut green tourmaline pistil, extending gold petals of pierced design, to the circular-cut diamond borders, mounted in 18K yellow gold, diameter 4.7 cm.  
Signed 'Monture Cartier' numbered and jeweler's mark. With French assay marks  
**CHF   10,000-15,000**

149      **A Gold and Diamond Pin**   **CARTIER**   circa 1950  
Designed as two stylized gold leaves enhanced with circular-cut diamond borders, mounted in 18K yellow gold, length 5 cm.  
Signed 'Cartier' with jeweler's mark and numbered. With French assay marks  
**CHF   8,000-12,000**

150      **A Diamond Sapphire and Turquoise Clip**   **CHAMPAGNAT**   circa 1940  
Designed as an exotic bird with a marquise-cut pink sapphire eye, decorated with cabochon turquoise and circular-cut diamonds, perched on a gold branch, mounted in finely engraved 18K yellow gold, length 7.3 cm.  
Signed. With French assay marks  
**CHF   4,000-6,000**

151      **A Diamond and Turquoise Ring**   **VAN CLEEF & ARPELS**   circa 1960  
Centering upon an oval cabochon turquoise within a two-tier circular-cut diamond surround, to the gold mount of twisted rope design, mounted in 18K yellow gold, size 4 1/4.  
Signed 'VC&A' and numbered. With French assay marks  
**CHF   8,000-10,000**

PROPERTY OF A GENTLEMAN

152      **A Fancy Coloured Diamond Ring**   circa 1890  
Set to the center with an old-cut fancy yellowish-brown diamond weighing approximately 3.33 carats, within an old-cut diamond surround, mounted in white gold and silver.  
With report no. 2008125 dated 27 February 2008 from CCIP Laboratory stating that the diamond is natural fancy yellowish-brown colour and SI1 clarity.  
**CHF   32,000-40,000**

148



149



150



151



152





153      **A Pair of Diamond and Ruby Lapel Clips**   **CARTIER**   circa 1945

Each of foliate design decorated with circular-cut diamonds within a circular-cut ruby surround to the gold mount of twisted rope design, mounted in 18K yellow gold, 4.4 cm.

Signed 'Cartier.' With French assay marks

**CHF   12,000-15,000**

PROPERTY OF AN EUROPEAN ESTATE

154      **A Diamond Ruby and Jade-Jadeite Clip**   **CARTIER**   circa 1945

Designed as a pair of sculpted gold birds highlighted with cabochon rubies and circular-cut diamonds, above a green jade-jadeite representation of water, mounted in 18K yellow gold, 2.8x3.9 cm.

Signed 'Cartier' and numbered. With French assay marks

**CHF   6,500-9,500**

PROPERTY OF AN EUROPEAN ESTATE

155      **A Lady's Diamond and Gold Wristwatch**   **CARTIER**   circa 1945

The circular-case in a compartment concealed with a stylized shell-shaped cover decorated with a circular-cut diamond border and detail, extending a gold link bracelet, mounted in 18K yellow gold, length 15.4 cm.

Signed 'Cartier' and numbered. With French assay marks

**CHF   8,000-12,000**

156      **A Diamond Platinum and Gold Lapel Watch**   **VAN CLEEF & ARPELS**   circa 1930

The rectangular watch with sliding 18K yellow gold and platinum cover, decorated with three square-cut diamonds, 3 x 1.2 cm.

Signed dial and numbered clip. With French assay marks

**CHF   3,500-4,500**

PROPERTY OF AN EUROPEAN ESTATE

157      **A Diamond Turquoise and Citrine Clip**   **CARTIER**   circa 1955

Designed as an owl, with a rectangular-cut citrine body, the head and wings decorated with cabochon turquoise and circular-cut diamonds, extending stylized gold feathers enhanced with circular-cut diamond accents, mounted in 18K yellow gold, length 6.4 cm.

Signed 'Cartier' with jeweler's mark and numbered. With French assay marks

**CHF   13,000-20,000**

153



154



155



156



157



158      **An Enamel and Gold Brooch** RENÉ BOIVIN circa 1895

Designed as a sculpted 18K yellow gold datura flower, to the translucid blue enamel background and similarly designed back, length 4.cm

With jeweler's mark for 'René Boivin.' With original case marked 'Maison René Boivin, fabricant joaillier, 38, rue de Turbigo PARIS.'

Note: the neckchain is of different origin.

CHF 16,000-20,000

159      **A Diamond and Sapphire Ring** GEORGES FOUQUET circa 1920

The oval-shaped bombé front decorated with old-cut diamonds and circular and French-cut sapphires, mounted in 18K yellow gold, size 7.

Signed and numbered. With French assay marks

CHF 7,500-9,000

PROPERTY OF A LADY

160      **A Citrine and Gold Ring** RENÉ BOIVIN circa 1950

The front of flowerhead design, set to the center with an oval-cut citrine within a circular-cut brown citrine surround, to the plain hoop, mounted in 18K yellow gold.

With French assay marks

CHF 6,500-9,500



158



159



160



PROPERTY OF A LADY

- 161

**A Diamond Brooch** circa 1910

Of pierced openwork lace motif, the square-shaped plaque decorated with old-cut and rose-cut diamonds, mounted in platinum, 6 cm.

CHF 10,000-15,000
- 162

**A Diamond Choker Necklace** CARTIER circa 1920

The black silk ribbon to the old-cut diamond borders, decorated with a delicate circular-cut diamond garland and foliate motif, suspending a natural bouton pearl, mounted in platinum, length 32 cm.

Signed 'Cartier,' with original case

CHF 73,000-85,000
- 163

**A Pair of Diamond Earrings** circa 1950

Each hoop decorated with a graduated series of circular-cut diamonds, mounted in platinum.

CHF 7,500-9,500

161



162



163





164

**A Fancy Intense Yellow Diamond Pendant GRAFF**

Set to the center with a rectangular radiant-cut fancy intense yellow diamond weighing approximately 2.32 carats, within a trapeze-cut diamond surround enhanced with a heart-shaped diamond surmount, to the fine trace-link chain, mounted in 18K white and yellow gold. Signed 'Graff' and numbered.

With report no. 16355839 dated 1 November 2007 from the Gemological Institute of America stating that the diamond is natural fancy intense yellow colour and VS1 clarity.

CHF 32,000-40,000

PROPERTY OF A GENTLEMAN

165

**A Diamond Cross Pendant**

Designed as an invisibly-set french-cut diamond cross to the spectacle-set diamond chain, mounted platinum; chain length 20 cm, pendant length 3.4 cm.

CHF 4,500-6,000

166

**A Coloured Diamond and Diamond Necklace**

The pear-shaped diamond surmount weighing approximately 0.31 carats, within a pavé-set diamond surround suspending a marquise-cut fancy pink diamond spacer weighing approximately 0.22 carats, within a pavé-set diamond surround, to the marquise-cut light brown diamond weighing approximately 2.51 carats, within a pavé-set diamond surround, to the fine double strand chain enhanced with micro-pavé diamond rondels, mounted in platinum and 18K gold.

CHF 26,000-35,000

164



165



166



167      **A Long Cultured Pearl Necklace**  
Designed as a series of sixty slightly graduating cultured black pearls measuring from approximately 14.2 mm to 15.0 mm, to the spherical 18K white gold clasp entirely decorated with circular-cut black diamonds and pavé-set diamonds, mounted in 18K white gold, length 92 cm.  
CHF 25,000-35,000

168      **A Pair of Cultured Pearl and Diamond Earclips**  
Each white cultured pearl surmount measuring approximately 11.9x 12.1 mm, to the circular-cut diamond trefoil spacer, suspending a black cultured pearl measuring approximately 11.9x 12.2 mm, mounted in 18K white gold, length 3 cm.  
CHF 4,000-6,000

PROPERTY OF A GENTLEMAN

169      **A Diamond 'Bird' Brooch**  
Designed as a sculpted exotic bird, the body entirely decorated with circular-cut diamonds, enhanced with a ruby-set eye and accented by a gold beak and claw, mounted in 18K yellow gold and platinum, length 7.5 cm.  
CHF 10,000-12,000



167



168



169



PROPERTY OF A LADY

170     **An Emerald and Diamond Pendant** circa 1860  
The surmount designed as an old-cut diamond scrolling ribbon bow suspending a cabochon emerald drop within a pear-shaped surround decorated with old-cut diamonds, mounted in gold and silver.  
**CHF 16,000-20,000**

171     **A Cultured Pearl and Diamond Necklace**  
Designed as four-rows of cultured pearls measuring approximately 5.5 mm to 6.0 mm, to the diamond accented gold bar link spacers, joined by a rectangular circular-cut diamond open-work panel clasp, mounted in white gold, length 31 cm.  
**CHF 5,000-8,000**

PROPERTY OF A GENTLEMAN

172     **An Art Deco Diamond Brooch**  
The rectangular pierced plaque decorated with circular and old-cut diamonds, with synthetic green gem accents, mounted in platinum, 7.8 x 1.8 cm.  
**CHF 3,200-4,500**

PROPERTY OF A GENTLEMAN

173     **A Diamond Ring**  
Set to the center with a circular-cut diamond weighing approximately 4.11 carats, to the plain hoop, mounted in platinum.  
With report no. 151106 dated 17 December 1999 from CCIP Laboratory stating that the diamond is I colour and VS1 clarity.  
**CHF 35,000-45,000**

174     **An Emerald Ring**  
Set to the center with a rectangular-cut emerald weighing approximately 8.11 carats, mounted in platinum, size 7 1/4.  
**CHF 8,000-12,000**



170



171



172



173



174





- 175

**A Diamond Necklace**

The front suspending a tassel of five pear-shaped rose-cut diamonds, each within a circular-cut diamond surround, to the circular-cut and marquise-cut diamond chain and rose-cut diamond clasp, mounted in platinum; chain length 42 cm., pendant length 5.2 cm.

CHF 25,000-30,000
- 176

**A Pair of Diamond Earpendants**

Each circular-cut diamond collet surmount suspending a rose-cut marquise-cut diamond spacer within a pavé-set diamond surround to the four similarly set rose-cut pear-shaped diamonds, mounted in platinum, length 5.5 cm.

CHF 12,000-15,000
- 177

**A Pair of Diamond and Sapphire Earclips**

Each designed as a sugarloaf cabochon pink or blue sapphire respectively weighing approximately 6.75 and 7.17 carats, within a marquise-cut and pear-shaped diamond surround, mounted in platinum, diameter 1.8 cm.

With report no.11000210 dated 9 November 2007 from the AGTA Gemological Testing Center stating that the sapphires are natural, and the blue sapphire shows no indication of heat treatment.

CHF 22,000-25,000
- 178

**A Multi-Colour Sapphire Bracelet**

The highly flexible band designed as a lattice of circular and oval-cut multi-coloured sapphires, mounted in 18K white gold, length 18 cm.

CHF 5,500-7,000



175



177



176

178



179      **A Diamond and Sapphire Double Clip Brooch**   **CHAUMET**   circa 1935  
Of scrolling design, decorated with old-cut diamonds and circular-cut sapphires, mounted in platinum, 5.2 cm.  
Signed 'Chaumet' with jeweler's mark. With French assay marks  
**CHF   28,000-35,000**

180      **An Art Deco Diamond and Sapphire Bracelet**   circa 1930  
Designed as an articulated ribbon with stylized drapery décor, decorated with circular-cut diamonds and tapering french-cut sapphires, mounted in platinum, length 18.4 cm.  
**CHF   32,000-40,000**

181      **A Diamond and Platinum 'Baguette' Wristwatch**   **CARTIER**   circa 1930  
The rectangular dial within a baguette-cut diamond surround to the platinum link strap and deployment buckle in 18K yellow gold.  
Dial is signed 'Cartier' with a numbered box. Movement is signed 'EWC.' With French assay marks  
**CHF   32,000-40,000**

182      **An Art Deco Sapphire Diamond and Pearl Pendant/Brooch**  
The openwork plaque entirely decorated with circular-cut diamonds to the two rows of square-cut sapphires, centering upon a pearl, mounted in platinum.  
The pearl has not been tested for natural origin.  
**CHF   5,000-10,000**



179



180



182



181



PROPERTY OF A GENTLEMAN

- 183

**A Cultured Pearl and Diamond Necklace**

Designed as a graduated series of twenty-five cultured pearls, measuring from approximately 15.2 mm to 18.5 mm, joined by a spherical gold clasp enhanced with pavé-set diamonds, mounted in 18K white gold, length 14.5 cm.

CHF 20,000-25,000
- 184

**A Pair of Diamond Earclips**

Each surmount designed as a circular-cut diamond collet cluster, suspending four graduating rows of circular-cut diamond collets, mounted in platinum, length 4.5 cm.

CHF 12,000-14,000
- 185

**A Pair of Diamond Earrings**

Each hoop consisting of thirteen asscher-cut diamonds, mounted in platinum.

CHF 12,000-16,000
- 186

**A Ruby and Diamond Bracelet**

Designed as a tapering lattice of oval-cut rubies and circular-cut diamonds, mounted in 18K white gold, length 18.5 cm.

CHF 20,000-30,000



183



184



185



186





187      **An Art Deco Diamond Necklace**  
The front panel of open-work design,entirely decorated with circular-cut diamonds,  
suspending a pear-shaped diamond weighing approximate 5.00 carats, to the circular-cut  
diamond fancy-shaped links, mounted in platinum, length 43 cm.  
**CHF 55,000-65,000**

PROPERTY OF A LADY

188      **An Art Deco Diamond and Pearl Brooch**  
Designed as a circular-cut and rose-cut diamond fleur-de-lys, set to the center with  
circular-cut diamond extending three pearls within an old-cut diamond surround, mounted  
in silver and gold.  
The pearls have not been tested for natural origin.  
**CHF 10,000-15,000**

PROPERTY OF A LADY

189      **A Diamond Ring**  
Set with a circular-cut diamond to the plain hoop, mounted in platinum, size 4 1/2.  
**CHF 10,000-15,000**

PROPERTY OF A LADY

190      **A Diamond Eternity Band**  
Of eighteen circular-cut diamonds, mounted in platinum, size 7.  
**CHF 1,200-1,500**

PROPERTY OF A LADY

191      **A Diamond Eternity Band**  
Of twenty-four old-cut diamonds, mounted in platinum, size 5.  
**CHF 600-900**

PROPERTY OF A LADY

192      **A Diamond Eternity Band**  
Of twenty-three circular-cut diamonds, mounted in platinum, size 7 1/4.  
**CHF 700-1,000**

PROPERTY OF A LADY

193      **An Art Deco Diamond Bracelet**  
Of articulated openwork design, composed of a series of pavé-set diamond links,  
each centering upon a diamond floret motif, mounted in platinum, length 17.5 cm.  
With French assay marks  
**CHF 8,000-10,000**

187



189



188



190



191



192



193



**An Elegant Diamond and Pearl Necklace**

Designed as three rectangular panels entirely decorated with circular-cut diamonds, each panel centrally enhanced by a larger circular-cut diamond, joined by buckle-shaped diamond link spacers, extending five rows of pearls with circular-cut diamond spacers and clasp, length 32 cm. (with 2 missing diamonds)

**CHF 20,000-30,000**





195      **A Diamond Emerald and Sapphire Necklace**    circa 1920  
Designed as an alternating series of four sapphires and eight emeralds carved with foliate motif, interspersed with circular-cut and pavé-set diamond links, mounted in platinum and white gold (can be detached to be worn as 2 bracelets), necklace length 41 cm (each bracelet length 17 cm).  
**CHF 48,000-60,000**

PROPERTY OF A LADY

196      **An Art Deco Diamond Bracelet**    circa 1930  
Designed as a line of forty-five graduated old-cut diamonds, mounted in platinum, length 17.5 cm.  
With French assay marks  
**CHF 6,000-8,000**

197      **An Art Deco Diamond and Sapphire Bracelet**    circa 1920  
Designed as five rectangular links set with square-cut and calibré-cut sapphires and circular-cut diamonds, mounted in platinum.  
**CHF 24,000-30,000**

198      **An Art Deco Diamond and Platinum Wristwatch**    AUDEMARS PIGUET    circa 1930  
The pavé-set diamond rectangular case extending old-cut and baguette-cut diamond links, each strap terminating in two tapering old-cut diamond hexagonal links, mounted in platinum, 17.2 cm.  
Signed movement. With French assay marks  
**CHF 20,000-25,000**



195



196



197

198



199

**A Gold and Enamel Compact** CARTIER

The circular gold compact with an enamelled border, decorated to the lid with a prancing gazelle and flower enamel detail, opening to reveal a powder compartment, with a lipstick holder en suite, mounted in 18K yellow gold.

Signed 'Cartier' and numbered. With French assay marks

CHF 20,000-30,000

200

**An Art Deco Diamond and Sapphire Bracelet** circa 1930

Designed as five articulated panels centering upon rectangular-cut sapphires framed by baguette-cut diamonds and old-cut circular and marquise-cut diamond foliate motifs, mounted in platinum, length 19 cm.

CHF 45,000-60,000

199



200



201      **A Pearl Emerald and Diamond Necklace**  
Designed as two swagged rows of cultured pearls measuring approximately 8.5 mm, to the sugarloaf cabochon emerald and marquise-cut diamond cluster clasp, mounted in 18K white gold, lengths 38.5 cm and 41.5 cm.  
**CHF 18,000-25,000**

202      **A Diamond 'Flower' Pin VAN CLEEF & ARPELS** circa 1950  
Off flower design, entirely decorated with circular and baguette-cut diamonds, mounted in platinum, length 11 cm.  
Signed 'Van Cleef & Arpels' and numbered  
**CHF 26,000-32,000**

203      **A Diamond and Pearl Brooch**  
The baroque cultured pearl enhanced by a pear-shaped diamond surround, extending a spray of four baguette-cut diamond terminals, with marquise-cut diamond accents, mounted in platinum, length 5.2 x 4.5 cm.  
**CHF 15,000-20,000**

204      **A Pair of Diamond Earclips RUSER** circa 1945  
Each designed as an cushion-shaped old-cut diamond within an old-cut diamond surround, mounted in platinum.  
Signed 'Ruser'  
**CHF 85,000-100,000**



201



202



203



204





205     **A Turquoise and Diamond Suite** BOUCHERON   circa 1960  
Comprising a bracelet, designed as a series of foliate links decorated with cabochon turquoise within a circular-cut diamond surround, mounted in 18K yellow gold; earclips and brooch en suite, bracelet length 16.8 cm.  
Signed 'Boucheron.' With French assay marks  
**CHF 60,000-75,000**

206     **A Diamond and Gold Double-Clip** CARTIER   circa 1935  
Each wing of gold openwork design, highlighted with diamond accents, to the three larger old-cut diamonds, mounted in 18K yellow gold.  
With jeweler's mark and English assay marks  
**CHF 10,000-15,000**

207     **A Three-Stone Diamond Ring**  
The front set with three circular-cut diamonds, to the plain hoop, mounted in 18K yellow gold, size 6.  
**CHF 18,000-26,000**



205



207



206





**A Cultured Pearl and Diamond Suite of Jewelry** CARTIER

Comprising a necklace, designed as a cultured pearl torsade, to the pavé-set diamond clasp; bracelet, earpendants, ring and watch of similar design en suite, mounted in 18K yellow gold. Signed 'Cartier' and numbered. With French assay marks

**CHF 50,000-60,000**



- 209      **An Art Deco Diamond Watch/Bracelet**  
The front decorated with circular-cut diamonds within a baguette-cut diamond surround, centrally enhanced with a larger circular-cut diamond pin that opens a concealed watch dial, extending a circular and baguette-cut diamond bracelet, mounted in platinum.  
CHF 25,000-35,000
- 210      **An Art Deco Diamond Ring**  
Set to the front with baguette-cut diamonds within a circular-cut diamond border, enhanced with a circular-cut diamond scroll, mounted in platinum, size 5.  
CHF 8,000-10,000
- 211      **A Diamond Bracelet**  
Each bow-shaped link centering upon a rectangular-cut diamond framed by baguette-cut diamonds extending circular-cut diamond lines, mounted in platinum, length 17.5 cm.  
CHF 40,000-45,000
- 212      **An Art Deco Diamond Bracelet MAUBOUSSIN** circa 1930  
Designed as three square-shaped motifs joined by structured links, decorated with baguette-cut and old-cut diamonds, mounted in platinum, length 16.8 cm.  
With report by Mauboussin dated 17 September 2007.  
CHF 28,000-35,000
- 213      **An Art Deco Diamond and Onyx Double Clip Brooch**  
Designed as a pair of semi-circular onyx plaques within circular-cut diamond borders, extending a graduated series of circular-cut diamond terminals, mounted in platinum, 8 x 4.5 cm.  
CHF 25,000-35,000



209



210



211



212



213





214      **An Edwardian Diamond and Pearl Necklace**  
The front suspending an oval pendant of pierced openwork design, entirely decorated with old-cut diamonds, centrally enhanced with a single pearl, to the pavé-set diamond surmount and two links of floral motif, the necklace designed as a pearl lattice, mounted in platinum, necklace length 62 cm, pendant length 5 cm.  
Pearls have not been tested for natural origin.  
**CHF 22,000-30,000**

215      **A Diamond Clip** circa 1930  
Designed as a pierced ribbon bow decorated with circular and baguette-cut diamonds, mounted in platinum, diameter 5.7 cm.  
With French assay marks  
**CHF 16,000-20,000**

215A      **A Diamond Clip** circa 1930  
Designed as a pierced ribbon bow decorated with circular and baguette-cut diamonds, mounted in platinum, diameter 5.7 cm.  
With French assay marks  
**CHF 16,000-20,000**

216      **A Pair of Unheated Burma Sapphire and Diamond Earpendants**  
Each designed as a pear-shaped un-heated Burmese sapphire weighing approximately 3.44 and 3.58 carats, within a circular-cut diamond surround to the circular-cut diamond openwork swing hoop suspended from a series of circular-cut diamond collets, mounted in platinum, length 7.5 cm.  
With report nos. GRS2006-020723 and GRS2006-020724 dated 10 February 2006 from the Gem Research Swisslab stating that the natural sapphires are of Burmese origin with no indications of heat enhancement.  
**CHF 22,000-28,000**

PROPERTY OF A LADY

217      **A Diamond Ring** circa 1950  
Centering upon a circular-cut diamond weighing approximately 2.90 carats, to the baguette-cut diamond shoulders and plain hoop, mounted in platinum and white gold, size 6.  
**CHF 7,500-10,000**

PROPERTY OF A LADY

218      **A Diamond Ring**  
Centering upon an old-cut diamond weighing approximately 5.68 carats, to the plain hoop, mounted in white gold.  
**CHF 28,000-35,000**



214



103

106

215



215A



216



217



218





PROPERTY OF A LADY

- 219     **A Sapphire and Diamond Brooch**  
Designed as an invisibly-set french-cut sapphire bow, to the circular-cut diamond borders, gathered at the center by a twisted circular-cut diamond ribbon, mounted in platinum, width 6.5 cm.  
**CHF 10,000-15,000**

PROPERTY OF A LADY

- 220     **A Ruby and Diamond Brooch**  
Designed as an invisibly-set french-cut ruby bow, to the circular-cut diamond borders, gathered at the center by a twisted circular-cut diamond ribbon, mounted in platinum, width 6.5 cm.  
**CHF 10,000-15,000**

PROPERTY OF A LADY

- 221     **A Sapphire and Diamond Bracelet**  
Designed as a flexible band of invisibly-set french-cut sapphire rows, to the circular-cut diamond collet borders, mounted in platinum, length 18 cm.  
**CHF 15,000-25,000**

- 222     **An Art Deco Diamond and Sapphire Ring** circa 1930  
The front of rectangular design, centering upon an oval-cut sapphire within an old-cut diamond surround, mounted in platinum, size 5 1/4.  
**CHF 4,000-6,000**

- 223     **A Diamond and Ruby Lady's Signet Ring** circa 1935  
The rectangular-shaped front decorated with baguette-cut diamonds framed by two square shaped panels decorated with calibr  -cut rubies, mounted in platinum.  
With French assay marks  
**CHF 6,500-8,500**



219



220



221



222



223



224

**A Rubelite and Diamond Necklace and Earpendants**

Comprising a necklace, designed as a series of pear-shaped rubelites within a pavé-set diamond surround to the circular-cut diamond spacers, joined at the front by a similarly-set oval-cut rubelite, suspending two fringes of similar design; earpendants en suite, mounted in platinum, necklace length 28.8 cm, earpendants length 5 cm.

**CHF 25,000-30,000**

225

**A Sapphire and Diamond Ring**

Set to the center with a rectangular step-cut sapphire weighing approximately 7.51 carats, framed by rectangular-cut diamond shoulders to the plain hoop, mounted in platinum, size 6 1/2.

With report no. 100003209 dated 11 October 2006 from the AGTA Gemological Testing Center stating that the sapphire is natural with no indications of heat enhancement.

**CHF 32,000-40,000**





224

225

226      **An Enamel Diamond and Ruby Brooch**   DAVID WEBB

Designed as a ram, the green guilloché enamel body and head decorated with gold swirls, enhanced with a pear-shaped ruby eye, circular-cut diamond horns and hooves, and a ruby-set diamond tail, mounted in 18K yellow gold and platinum, 7.7 cm.

Signed 'Webb' for David Webb

CHF   15,000-20,000

227      **A Diamond Gold and Enamel Bracelet**   DAVID WEBB

Designed as a black enamel and gold hinged cuff of geomteric motif, enhanced with a border of circular-cut diamonds, mounted in platinum and 18K yellow gold, diameter 7 cm.

Signed 'David Webb'

CHF   16,000-20,000

228      **A Diamond Pearl Emerald and Gold 'Putti' Brooch**   DAVIDWEBB   1970

Designed as a pair of prancing putti of hammered gold, one playing a circular-cut diamond and pear-shaped emerald lyre, the other holding a biwa pearl, enhanced with circular-cut diamond flowing ribbons, mounted in 18K yellow gold and platinum.

Signed 'Webb' for David Webb

CHF   14,000-18,000

229      **A Carved Jade Sapphire Diamond Gold and Enamel Cuff Bracelet**   DAVIDWEBB

Designed as a white enamel and yellow gold bombé cuff bracelet, the front enhanced with an intricately carved jade plaque, enhanced with two oval cabochon sapphires carved as scarebe motifs, to the two circular-cut diamond tapering shoulders, mounted in 18K yellow gold and platinum, diameter 7 cm.

Signed 'Webb' for David Webb

CHF   24,000-28,000

230      **A Diamond, Gold and Pearl 'Monkey' Brooch**   DAVIDWEBB

Designed as a monkey, the body decorated with textured gold fur, enhanced with a circular-cut diamond face, feet and hands, with ruby-set eyes, holding a cultured baroque pearl, mounted in 18K yellow gold and platinum, length 7.6 cm.

Signed 'Webb' for David Webb

CHF   50,000-60,000



226



227



228



230



229





231      **A Pair of Diamond Hoop Earrings**  
Each bombé hoop entirely decorated with circular-cut diamond links, mounted in 18K white gold, diameter 3.5 cm.  
**CHF 5,000-7,000**

PROPERTY OF A LADY

232      **A Ruby and Diamond Necklace**  
Designed as a series of oval-cut ruby concentric hoop links, interspersed with pavé-set diamond links, mounted in 18K white gold, length 88 cm.  
**CHF 18,000-25,000**

PROPERTY OF A LADY

233      **A Sapphire and Diamond Longchain Necklace**  
Designed as a series of oval-cut sapphire concentric hoop links, interspersed with pavé-set diamond links, mounted in 18K white gold, length 58 cm.  
**CHF 15,000-20,000**

234      **A Diamond Ring** circa 1960  
Set to the center with an old-cut diamond weighing approximately 3.39 carats, within a two-row radiating baguette-cut diamond surround, mounted in platinum and 18K white gold, size 6.  
**CHF 32,000-40,000**

231



232



233



234



235      **A Cultured Pearl and Diamond Necklace**  
Designed as a series of twenty-seven graduated cultured black pearls measuring approximately 15 mm to 17.3 mm, joined by a pavé-set diamond spherical clasp, mounted in white gold, length 41.5 cm.  
**CHF 9,000-12,000**

236      **A Pair of Cultured Pearl and Diamond Earclips**  
Each pavé-set diamond circular bombé surmount to the similarly set diamond cap, suspending a Tahitian cultured pearl measuring approximately 17.6 mm and 15.6 mm, mounted in 18K white gold, length 3 cm.  
**CHF 10,000-15,000**

237      **A Diamond Ring**  
Of bombé design, entirely decorated with pavé-set diamonds, mounted in 18K white gold, size 7.  
**CHF 5,000-6,000**

238      **A Diamond Bracelet**  
Of flexible design, consisting of nine rows of circular-cut diamonds, joined by the clasp, mounted in 18K white gold, length 18 cm.  
  
**CHF 25,000-30,000**



235



236



237



238



239      **A Pair of Sapphire and Diamond Earpendants**  
Each surmount designed as a pear-shaped sapphire within a pavé-set diamond surround, to the circular-cut diamond spacer, suspending a pear-shaped bombé pavé-set diamond drop (with alternate interchangeable aquamarine drops not illustrated), mounted in 18K white gold, length 4.8 cm.  
**CHF 10,000-15,000**

PROPERTY OF A LADY

240      **A Multi Coloured Sapphire and Diamond Cross Pendant** CARTIER circa 1950  
Centering upon a circular-cut pink sapphire enhanced with pear-shaped diamonds, extending four rectangular-cut sapphire terminals, mounted in 18K yellow gold and platinum, 3.5 x 2.5 cm.  
Signed 'Cartier'  
**CHF 13,000-18,000**

241      **A Diamond Bracelet**  
A wide articulated band, entirely decorated with invisibly-set princess-cut diamonds, mounted in 18K white gold, length 17.8 cm.  
**CHF 80,000-90,000**

242      **A Kunzite and Diamond Ring** MARGHERITA BURGNER  
Set to the center with a square-cut kunzite weighing approximately 44.45 carats, to the mount decorated with circular-cut pink sapphires and black diamonds, mounted in 18K white gold, size 7.5.  
Signed 'Margherita Burgener'  
**CHF 7,000-9,000**

243      **A Pair of Diamond Hoop Earrings**  
Each bombé hoop entirely decorated with pavé-set diamonds, mounted in 18K white gold, length 3 cm.  
**CHF 3,000-5,000**



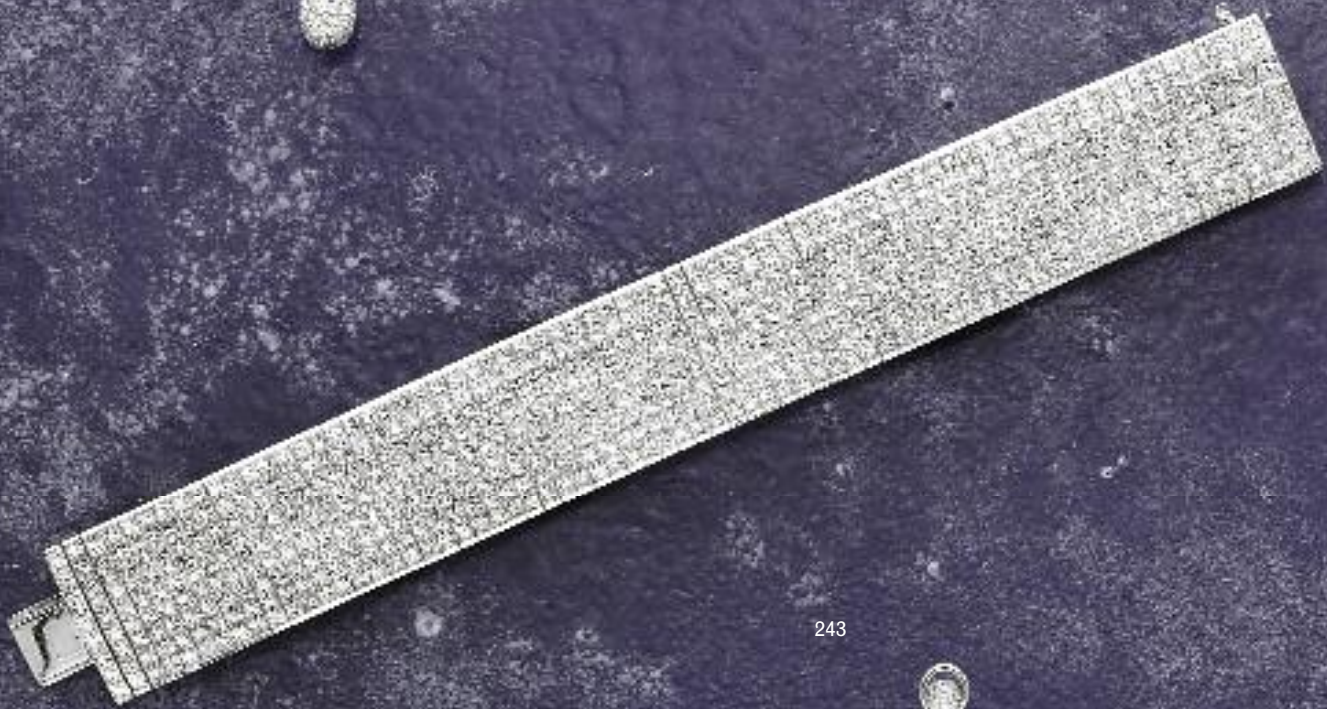
240



239



241



243



242





## RENÉ BOIVIN

*A powerful, visionary and timeless style*

Due to his extensive training as a master gold craftsman in his brother's workshop, René Boivin was able to acquire several reputable workshops equipped with the finest quality tools, enabling him to retain the most skilled craftsmen within the industry. In 1898 René Boivin established his workshop at 38, rue Turbigo in Paris. That same year, he married Jeanne Poiré, the younger sister of Paul Poiré—the famous couturier and master as well in interior decoration, fabric production, cosmetics and perfumes.

At the turn of the 20th century, René Boivin was able to apply his talents as a master goldsmith and designer to explore his passion for naturalistic themes. He then transferred his love of flowers and his knowledge of botanicals into elegant compositions. The floral theme permanently remained part of the jewelry house's repertoire.

In 1900, with the opening of his salon on rue des Pyramides, Boivin distinguished himself from his contemporaries with his innovative and anti-conformist spirit. He intrigued an elite clientele of aristocrats, artists and intellectuals: Edgar Degas, Alexis Carrel, Francis Poulenc... Who were impressed by his unconventional use of semi-precious stones and in particular the new volumes characteristic of his timeless rings.

Upon his death in 1917, the poet, musician, amateur artist and exceptional jeweler left behind this flourishing jewelry house to his wife, Jeanne Boivin, who was able to harmonize the diverse personalities of her collaborative team.

Within the prestigious universe of French jewelry-making, the house of René Boivin located on the Avenue de l'Opera, was uniquely operated by a woman, leading a team of talented women: including Suzanne Belperron, the first sales-person and then designer at Boivin from 1921 to 1931; Juliette Moutard, a skilled designer from 1931 to 1970; and finally Germaine Boivin, Jeanne Boivin's daughter, a designer with eclectic talents and an extraordinary imagination, joined the jewelry house in 1926 and whose integral role continued during the years of 1938 to 1976.

The originality of Jeanne Boivin's work can partially be attributed to her artistic family background as well as a fertile flare for creativity. She lived in an atmosphere that fostered artistic innovations. As an important colourist, she was more interested by the decorative effects produced by jewelry than the intrinsic value of stones. She retained the Art Nouveau approach of combining various materials, including non-precious materials. Jeanne Boivin designed jewels that evoke emotion based on their unusual contrasts and newly explored, for example, combining materials such as wood and diamonds or rock crystal with semi-precious stones (such as tourmaline, sapphire, topaz, peridot and amethyst) during a period in which most jewelers only combined coral, jade and onyx...



Although her most productive creative period was contemporary to Jean Fouquet, Gerard Sandoz, Raymond Templier or Paul Brandt (the artists within the avant-garde Art Deco movement influenced by cubism), Jeanne Boivin remained quite sensitive to the theme of naturalistic forms, both floral and animalistic. Her inspiration for each creation was primarily dictated by the material which would then lead to the form of the jewel. She favored full forms-voluminous and round, characteristic of her independent style.

Not receptive to formulas dictated by fashion, Jeanne Boivin was a true fore-runner of styles as she would create white jewelry pieces (1929-1934) and invent colourful volumes, that one would more commonly associate with the 1940's. Without wanting to cultivate contradictions but rather relying on her inspiration, she favored the use of yellow gold in the thirties, at a time when the rage was platinum.

Jeanne Boivin's creations attracted admiration and passion among: Louise de Vilmorin and her friends, who by their luxurious anti-conformism marked the period in between the two world wars; writers: Paul Claudel, Roland Dorgèes; artists: Marie Laurencin, Kees Van Dongen; fashion designers: Lucien Lelong; and other important personalities during this period: Cecil Beaton, Gary Cooper, Jean Mermoz, the doctor Freud himself... Without considering all the major individuals of international elegance, the Duke and Duchess of Windsor as well as Daisy Fellowes, who, had an exquisite taste and considerable fortune, in 1939 enthusiastically purchased seven pieces of jewelry in one order.

The intellectual and social avant-garde scene met in the salons of Mrs. Boivin. She refused to act as a sales person, considering herself an artist to be consulted as a specialist of unique custom-made jewelry pieces. Therefore, nothing banal came out of Mrs. Boivin's workshop.

She maintained a strict standard of quality that reflected a sense of perfectionism. She would often re-make a piece several times if it did not satisfy her expectations. Following the guidelines established by René Boivin, the production of each piece was subject to the highest level of attention.

In 1954, Germaine Boivin assumed the responsibility of overseeing the jewelry house until 1976. Jeanne Boivin's style and influence would continue to have an impact in the 80's, among the jeweler's of the Place Vendôme: notably for their proportions and volumes that have become eternally modern.

The jewels created by the house of René Boivin are extremely rare and scarce. Very wearable, collectors hesitate to part from them, and buyers are always waiting for the opportunity to acquire a Boivin piece. The enthusiasm for Boivin jewelry never ceases as its uniquely luminous creativity assures its continuity.

(translated from the original French text by Marguerite de Cerval)

244

**A Diamond and Amethyst Brooch RENÉ BOIVIN** circa 2005

Of umbel flower design, decorated with circular-cut amethysts in various shades of violet, enhanced with a circular-cut diamond accent, mounted in oxidized 18K gold, diameter 7.5 cm.

Signed 'René Boivin,' numbered 1/1 and dated. With French assay marks

CHF 65,000-75,000

245

**A Blue Agate and Tanzanite Double-Clip Brooch RENÉ BOIVIN** circa 2005

Designed as triangular brooches, composed of blue agate pyramids centrally enhanced with circular-cut tanzanites, mounted in 18K white gold with patina.

Signed 'René Boivin,' numbered 1/1 and dated. With French assay marks

CHF 18,000-25,000





244



245



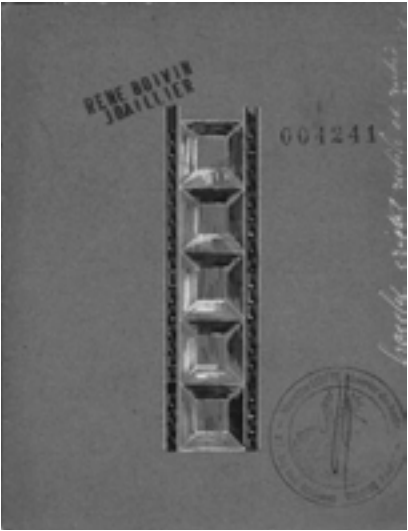
246      **A Fire Opal and Wood Bracelet** RENÉ BOIVIN circa 2005  
Designed as a series of ten sandal wood square-shaped links, to the cabochon fire opal borders, mounted in 18K yellow gold.  
Signed 'René Boivin,' numbered 1/1 and dated. With French assay marks  
**CHF 14,000-18,000**

PROPERTY OF A LADY

247      **A Citrine and Wood Bangle** RENÉ BOIVIN circa 2005  
Designed as a bombé wood open bangle, the front decorated with an oval panel of circular-cut and cabochon yellow and brown citrines, mounted in 18K yellow gold.  
Signed 'René Boivin,' numbered 1/1 and dated. With French assay marks  
**CHF 20,000-25,000**

248      **A Ruby and Gold Ring** RENÉ BOIVIN  
The front designed as four rows of circular-cut rubies, mounted in 18K yellow gold, size 6 1/2.  
Signed 'René Boivin.' With French assay marks  
**CHF 4,000-6,000**

249      **A Yellow Sapphire and Gold Ring** RENÉ BOIVIN  
The front designed as four rows of circular-cut yellow sapphires, mounted in 18K yellow gold, size 6 1/2.  
Signed 'René Boivin.' With French assay marks  
**CHF 3,500-4,500**





246



247



248



249





250

**A Citrine Garnet and Gold Bangle** RENÉ BOIVIN circa 2005

Of cuff design, the dome-shaped front decorated with blue-green garnets within a spherical citrine bead surround, to the rigid curved gold bracelet of Etruscan motif, mounted in 18K yellow gold.

Signed 'René Boivin,' numbered 1/1 and dated 2005. With French assay marks

CHF 35,000-40,000

251

**A Diamond and Gold Ring** RENÉ BOIVIN

The front designed as four rows of circular-cut diamonds, mounted in 18K yellow gold, size 6 1/2.

Signed 'René Boivin.' With French assay marks

CHF 9,000-12,000



250



251





252     **A Gold and Ivory Necklace** RENÉ BOIVIN circa 2005  
Designed as a series of thirteen rectangular ivory plaques, suspending trefoil clusters of fluted gold drops, to the pavé-set diamond rondel surmounts, mounted in white gold.  
Signed 'René Boivin,' numbered 1/1 and dated. With French assay marks  
CHF 38,000-50,000

253     **A Pair of Diamond and Quartz Earpendants** RENÉ BOIVIN circa 2005  
Each designed as a graduated series of circular-cut diamond chevrons, suspending a circular cabochon rutilated quartz, mounted in 18K white gold.  
Signed 'René Boivin,' numbered 1/1 and dated. With French assay marks  
CHF 5,600-7,500

254     **A Gold and Mirrored Ring** RENÉ BOIVIN circa 2005  
The front designed as a mirrored mosaic dome, to the 18K white gold hoop, size 6.  
Signed 'René Boivin,' numbered 1/1 and dated. With French assay marks  
CHF 4,000-6,000



252



253



254





255      **An Emerald Jade-Jadeite and Bronze Bracelet** RENÉ BOIVIN circa 2005  
Of cuff design, the bombé front decorated with pyramidal jade-jadeite and cabochon emeralds, mounted in bronze with a gray patina.  
Signed 'René Boivin,' numbered 1/1 and dated. With French assay marks  
**CHF 12,000-15,000**

PROPERTY OF A LADY

256      **A Diamond Quartz and Ivory Brooch** RENÉ BOIVIN circa 2005  
Of foliate design the cabochon bombé quartz, enhanced with three ivory beads, within a circular-cut diamond surround, mounted in 18K white gold.  
Signed 'René Boivin,' numbered and dated. With French assay marks  
**CHF 12,000-15,000**

257      **An Emerald and Bronze Ring** RENÉ BOIVIN circa 2005  
The wide tapering bronze mount with silver patina enhanced with seven carved emeralds of foliate motif.  
Signed 'René Boivin,' numbered 1/1 and dated. With French assay marks  
**CHF 7,000-9,000**

258      **A Tsavorite and Gold Ring** RENÉ BOIVIN  
The front designed as a bombé dome decorated with circular-cut tsavorites, mounted in 18K yellow gold with brown patina, size 6.  
Signed 'René Boivin,' numbered 1/1 and dated. With French assay marks  
**CHF 9,000-13,000**



255



256



257



258





259      **An Impressive Sapphire Lapis Lazuli and Gold Brooch** RENÉ BOIVIN circa 2005

Of starfish design, entirely decorated with cabochon lapis-lazuli and circular-cut blue sapphires, mounted in 18K white gold, length 11.3 cm.

Signed 'René Boivin,' numbered 1/1 and dated. With French assay marks

CHF 32,000-40,000

260      **A Sapphire and Gold Ring** RENÉ BOIVIN

The front designed as four rows of circular-cut sapphires, mounted in 18K white gold, size 6 1/2.

Signed 'René Boivin.' With French assay marks

CHF 4,000-6,000

261      **A Diamond and Gold Ring** RENÉ BOIVIN

The front designed as four rows of circular-cut diamonds, mounted in 18K white gold, size 6 1/2.

Signed 'René Boivin.' With French assay marks

CHF 9,000-12,000



259



260



261



262      **A Pair of Diamond Onyx and Garnet Earpendants** RENÉ BOIVIN circa 2005  
Each designed as a circular-cut garnet surmount, suspending a series of cabochon navette-shaped onyx beads and circular-cut diamond detail, to the circular-cut garnet, mounted in oxidized 18K gold, length 5.2 cm.  
Signed 'René Boivin,' numbered 1/1 and dated.  
With French assay marks  
**CHF 10,000-15,000**

263      **An Opal and Gold Bracelet** RENÉ BOIVIN circa 2005  
Of hinged design, the polished gold bangle terminating in a bombé dome decorated with a mosaic of opals, mounted in 18K white gold.  
Signed 'René Boivin,' numbered 1/1 and dated. With French assay marks.  
**CHF 11,000-16,000**

263A      **An Opal and Gold Ring** RENÉ BOIVIN circa 2005  
Designed as a dome, decorated with a mosaic of opals, to the white gold hoop.  
Signed 'René Boivin,' numbered 1/1 and dated. With French assay marks  
**CHF 6,000-8,000**



262



263



263A





264

**A Cultured Pearl Ruby and Multi-Coloured Sapphire Necklace** RENÉ BOIVIN circa 1970

Composed of two rows of cultured pearls gathered by an 18K yellow gold clasp with a cross-shaped motif decorated with multi-coloured sapphires and rubies, length 100 cm.

Signed 'René Boivin.' With French assay marks

**CHF 8,000-12,000**







265     **A 'Barbarian' Gilt Necklace** RENÉ BOIVIN circa 1925  
Designed as three swagged rows of circular bombé links enhanced with a spiral motif.  
With jeweler's mark.  
CHF 24,000-30,000

266     **A Rare Diamond and Silver Bracelet** RENÉ BOIVIN circa 1928-1930  
Designed as a rigid bombé oxidized silver cuff, centrally enhanced with a panel of square-cut  
and pavé-set diamonds.  
CHF 48,000-65,000





265



266







PART II





PROPERTY FROM A LADY

267

**A Rare Rock Crystal and Diamond Necklace and Earpendants** GEORGES FOUQUET

circa 1920

The spherical rock crystal bead neckchain joined at the front with a circular bombé rock crystal hoop, suspending a bombé pear-shaped rock crystal drop, enhanced with old-cut diamond links; with earpendants en suite of similar design, mounted in platinum.

Necklace signed 'Fouquet' with jeweler's mark. With French assay marks

**CHF 40,000-60,000**



267





268      **A Pair of Enamel and Diamond Earclips**   DAVID WEBB

Each designed as an oval-shaped black enamel curved link enhanced with a circular-cut diamond panel and similarly-set hoop surmount, mounted in 18K yellow gold and platinum, length 4.0 cm.

Signed 'Webb' for David Webb

**CHF 8,000-12,000**

269      **An Enamel, Gold and Diamond 'Tiger' Brooch**   DAVID WEBB

Designed as a sculpted white and black enamel tiger, enhanced by a circular-cut diamond collar and mane, with pear-shaped emerald-set eyes, mounted in 18K yellow gold and platinum, length 5.5 cm.

Signed 'David Webb'

**CHF 8,500-12,000**

270      **A Black Enamel Diamond and Gold 'Leopard' Brooch**   DAVID WEBB

Designed as a sculpted black enamel and gold leopard, to the pavé-set diamond collar and emerald-set eye, mounted in 18K yellow gold and platinum, length 7.5 cm.

Signed 'David Webb'

**CHF 9,000-12,000**

271      **A Black Enamel Diamond and Gold 'Tiger' Brooch**   DAVID WEBB

Designed as a sculpted textured gold and black enamel crouching tiger, to the pavé-set diamond collar and emerald-set eye, mounted in 18K yellow gold and platinum, length 5.5 cm.

Signed 'David Webb'

**CHF 7,500-11,000**

272      **A White Enamel and Diamond Cuff Bracelet**   DAVID WEBB

Designed as a wide tapering sculpted white enamel band, centering upon a rectangular panel decorated with circular-cut diamonds, mounted in 18K yellow gold and platinum, diameter 7 cm.

Signed 'David Webb'

**CHF 15,000-18,000**

268



269



270



272



271





PROPERTY OF A GENTLEMAN

273     **An Important Grey Natural Pearl and Diamond Brooch** circa 1900  
Centering upon a grey-colour natural pearl within an old-cut diamond scrolling ribbon surround, suspending a pair of old-cut diamond fringes, enhanced with larger old-European cut diamonds, terminating in grey natural pearl drops, mounted in gold and silver.  
With reports nos. 183633, 183634 & 183635 dated 29 January 2008 from the French Gemological Laboratory stating that the pearls are of natural origin.  
**CHF 48,000-80,000**

274     **A Diamond and Ruby Brooch** circa 1850  
Centering upon a cushion-cut ruby within a two-row old-cut diamond surround, mounted in gold and silver.  
**CHF 30,000-35,000**

PROPERTY OF A GENTLEMAN

275     **A Ruby Ring** circa 1900  
Set to the center with an oval-cut ruby within a two row surround of old-cut diamonds, mounted in platinum and white gold.  
With report no. 183636 dated 29 January 2008 from CCIP Laboratory stating that the ruby is of Burma origin with no indication of heat enhancement.  
**CHF 24,000-32,000**

276     **A Pair of Girandole Earrings** circa 1820  
Each designed as articulated drops set with old-cut circular and pear-shaped diamonds, mounted in gold and silver, length 7 cm.  
**CHF 23,000-30,000**



273



274



275



276





277      **A Baroque Cultured Pearl and Coloured Diamond Necklace**  
Designed as a longchain series of baroque pearls measuring approximately 12.1 mm to 13.8 mm, interspersed with pavé-set coloured diamond rondels to the similarly set clasp, mounted in oxidized 18K white gold, length 103 cm.  
CHF 20,000-25,000

278      **A Pair of Cultured Pearl and Diamond Earclips**  
Each marquise-cut diamond surmount suspending a white cultured pearl within a circular-cut diamond collet hoop, mounted in 18K white gold, length 4.6 cm.  
CHF 9,000-11,000

279      **A Unique Diamond Ring MARGHERITA BURGNER**  
Of cross-over design, each heart-shaped terminal entirely decorated with circular-cut white and coloured diamonds, to the plain band, mounted in 18K white gold, size 7.  
CHF 3,000-4,000

277



278



279





280      **A Pair of Diamond Earrings** circa 1980

Each designed as a cluster of articulated ribbons entirely decorated with circular-cut diamonds, gathered by a similarly set diamond surmount, mounted in 18K yellow gold, length 6.5 cm.

With French assay marks

**CHF 45,000-55,000**

PROPERTY OF A LADY

281      **A Diamond and Gold Bracelet**

Designed as a highly flexible band of articulated textured gold links enhanced with circular-cut diamond flames, mounted in 18K yellow gold, length 18.5 cm.

With French assay marks

**CHF 6,000-8,000**

PROPERTY OF A LADY

282      **A Set of Yellow Sapphire and Gold Bangles**

Each of hinged design, the bombé front entirely decorated with circular-cut yellow sapphires, mounted in 18K yellow gold, diameter 6.75 cm.

**CHF 3,000-5,000**

PROPERTY OF A LADY

283      **A Gold and Enamel 'Snake' Ring** DAVID WEBB

Designed as a black enamel and gold coiled snake with cabochon ruby-set eyes and circular-cut diamond detail, mounted in 18K yellow gold and platinum, size 6.

Signed 'Webb'

**CHF 3,500-5,000**

280



281



282



283





- 284

**A Diamond and Gold ‘Panther’ Suite** CARTIER circa 1990

Comprising a necklace, the flexible collar of gold links in a brick-layer design, entirely decorated with circular-cut diamonds, bracelet en suite, mounted in 18K yellow gold.

Signed ‘Cartier’ and numbered. With French assay marks

**CHF 80,000-100,000**
- 285

**A Lady’s Pink Diamond and Gold Wristwatch** BREGUET

The watch with skeletonized movement in a circular case of 18K yellow gold within a pavé-set diamond bezel, the lugs designed as pavé-set fancy coloured diamond cats enhanced with emerald-set eyes, to the pink strap.

Dial and movement signed and numbered.

**CHF 8,000-12,000**



284



285



286      **A Diamond Peridot and Tourmaline Ring** LYDIA COURTEILLE  
Of tapering bombé design, entirely decorated with vari-cut peridot and tourmalines, enhanced by circular-cut diamonds, mounted in 18K white gold with iridescent oxidized patina, size 7.  
Signed 'Lydia Courteille,' with jeweler's mark. With French assay marks.  
**CHF 12,000-15,000**

287      **A Pair of Peridot and Diamond Earpendants**  
Each circular-cut diamond collet surmount suspending a series of circular-cut diamond quatrefoil links, to the pear-shaped peridot weighing approximately 24.18 carats in total, within a pavé-set diamond surround, mounted in platinum, length 5.3 cm.  
**CHF 9,000-11,000**

288      **A Pair of Diamond and Gold Earrings**  
Each designed as a wide gold hoop, the front entirely decorated with pavé-set diamonds, mounted in 18K rose gold.  
**CHF 5,000-7,000**

289      **A Pair of Tsavorite Garnet and Diamond Cufflinks** MARGHERITA BURGNER  
Each designed as a circular bombé link entirely decorated with circular-cut tsavorite garnets, to the bar-link enhanced with two circular-cut diamonds, mounted in 18K white gold, diameter 1.5 cm.  
Signed 'Margherita Burgener'  
**CHF 2,000-3,000**

287



286



288



289





- 290

**A Rare Gold and Diamond Bracelet** RENÉ BOIVIN circa 1940

Of wide flexible design, composed of a series of interlocking gold links with circular-cut diamond collets, embellished with a border of gold boules, mounted in 18K yellow gold, length 19.2 cm.

With French assay marks

**CHF 80,000-100,000**
- 291

**A Diamond and Gold Bracelet** CARTIER circa 1950

Designed as a series of interlocking twisted rope motif gold links, enhanced by a central line of circular-cut diamond accents, mounted in 18K yellow gold, length 18.5 cm.

Signed 'Cartier' and numbered. With French assay marks

**CHF 13,000-18,000**
- 292

**A Diamond and Gold Ring** CARTIER circa 1945

The front designed as three tiered rows of circular-cut diamonds, mounted in platinum and 18K yellow gold, size 5 1/4.

Signed 'Cartier.' With French assay marks

**CHF 21,000-25,000**
- 293

**A Coloured Diamond 'Skull' Ring** LYDIA COURTEILLE

Designed as a decorated skull enhanced with pavé-set coloured diamond mice, mounted in 18K partially oxidized yellow and white gold, size 7.

With jeweler's mark for 'Lydia Courteille' and French assay marks

**CHF 8,000-10,000**

290



291



292



293





PROPERTY FROM A PRIVATE COLLECTION

294

**A Fancy Coloured Diamond Ring**

Set to the center with a heart-shaped fancy yellowish-brown diamond weighing approximately 17.70 carats, to the pavé-set diamond four-row band, mounted in platinum, size 5 3/4.

With report no. 45397 dated 13 October 2005 from SSEF stating that the diamond is natural fancy yellowish brown.

**CHF 190,000-230,000**

295

**A Pair of Diamond 'Skull' Earpendants** LYDIA COURTEILLE

Each pavé-set coloured diamond rigid line suspending a sculpted pavé-set coloured diamond skull motif, mounted in oxidized 18K white gold, length 7.2 cm.

Signed 'Lydia Courteille'

**CHF 16,000-20,000**

296

**A Coloured Diamond 'Skull' Ring** LYDIA COURTEILLE

The front designed as a sculpted skull and bone motif entirely decorated with circular-cut coloured diamonds to the similarly set hoop, mounted in oxidized 18K white and yellow gold, size 6.

With jeweler's mark for 'Lydia Courteille' and French assay marks

**CHF 4,500-6,000**

It was through a chance meeting with an antique dealer that Lydia Courteille decided to pursue a career in jewellery. As a certified gemologist, Courteille uses her expertise to seek out rare and precious stones, although charm and originality remain the primary factors in her jewel selection. Not allowing her passion for jewels to be temporarily confined, Courteille embraces stones from a wide range of historical periods; some of her most ancient stones find their roots in the early 18th century.

Courteille is the proprietor of two Parisian boutiques, both celebrated for their intimate and evocative atmosphere. To enter one of Courteille's boutiques is to enter into a unique universe of jewels, replete with exotic stones, like jade, turquoise, and coral for which the jeweller is so passionate. The original store, near the chic Place Vendôme, was joined in 2000 by a new boutique in the artistic and trendy area surrounding St. Germain des Près. Both boutiques feature Courteille's own work, a collection that reflects her gemological expertise and creative flair.

294



295



296





297      **A Rock Crystal and Diamond Ring** LYDIA COURTEILLE

The front set with a faceted rock crystal framing a pavé-set diamond skull with similarly set skull shoulders, to the plain hoop, mounted in oxidized 18K white gold, size 7.

With jeweler's mark for 'Lydia Courteille'

CHF 5,000-7,000

298      **An Impressive Coloured Diamond 'Skull' Brooch** LYDIA COURTEILLE

Centering upon a pavé-set coloured diamond skull and bones motif extending nine feline teeth, mounted in oxidized white gold, size 7.

Signed 'Lydia Courteille.' With French assay marks

CHF 16,000-20,000

299      **A Pair of Coloured Diamond and Agate 'Skull' Earrings** LYDIA COURTEILLE

Each designed as a circular hoop with a veneer of white agate, enhanced with a pavé-set coloured diamond skull and bones motif, mounted in oxidized 18K white gold, diameter 4.5 cm.

Signed 'Lydia Courteille'

CHF 4,500-6,000

297



298



299





300      **A Pair of Coloured Diamond and Onyx 'Skull' Earrings** LYDIA COURTEILLE

Each designed as a circular hoop with a veneer of black onyx, enhanced to the front with a pavé-set coloured diamond skull motif, mounted in oxidized 18K white gold, diameter 6 cm.

Signed 'Lydia Courteille'

**CHF 4,500-6,000**

301      **A Coloured Diamond 'Skull' Necklace** LYDIA COURTEILLE

Of longchain design, the oxidized 18K white gold chain suspending a series of five graduated pavé-set coloured diamond skeletons, interspersed with similarly set skull motifs, mounted in oxidized 18K white gold.

With jeweler's mark for 'Lydia Courteille'

**CHF 29,000-40,000**

302      **A Diamond and Rock Crystal 'Skull' Ring** LYDIA COURTEILLE

Set to the center with a skull-shaped rock crystal enhanced with pavé-set white, black and coloured diamond serpent motifs, mounted in oxidized 18K white gold, size 7 1/2.

With jeweler's mark for 'Lydia Courteille'

**CHF 15,000-20,000**

303      **A Coloured Diamond and Cacholong Ring** LYDIA COURTEILLE

Set with a bombé cabochon cacholong within a flower and dragonfly décor, decorated with coloured diamonds, mounted in oxidized 18K white gold, size 7.

With jeweler's mark for 'Lydia Courteille.' With French assay marks

**CHF 6,500-7,500**

300



301

302



303





PROPERTY FROM A GENTLEMAN

304

**A Unique Diamond Watch JACOB & CO.**

The circular dial entirely decorated with a pavé-set black and white diamond skull motif within a circular-cut diamond surround bezel, mounted in stainless steel, diameter of case 7 cm.

Caseback and dial signed 'Jacob & Co' and numbered 017. Special edition produced in collaboration with Lucien Pellat-Finet.

CHF 20,000-30,000





304



305



305

**An Oyster Perpetual Datejust Wristwatch ROLEX**

A fine 18K white gold case and pavé-set diamond dial to the circular-cut diamond surround bezel, highlighted with red lacquered Arab numerals.

Signed and numbered.

**CHF 30,000-35,000**



PROPERTY OF A LADY

306      **A Pair of Diamond Brooches** VAN CLEEF & ARPELS circa 1998  
Each designed as an openwork pavé-set diamond flowerhead, mounted in 18K white gold.  
Signed 'VCA' and numbered  
**CHF 20,000-25,000**

PROPERTY OF A LADY

307      **A Sapphire Longchain Necklace**  
Designed as a longchain series of vari-cut sapphires, mounted in 18K white gold,  
length 266.5 cm.  
**CHF 15,000-20,000**

308      **A Pair of Sapphire and Diamond Earpendants and Ring**  
Comprising a pair of earpendants designed as a graduated series of heart-shaped sapphires  
weighing approximately 14.75 carats in total, within a pavé-set diamond surround; a ring of  
similar design en suite centering upon a sapphire weighing approximately 9.71 carats,  
mounted in 18K white gold. earpendants length 4 cm, ring size 7.  
With report nos. F4A18754, F4A23061 and F4A23062 dated 27 October 2004 and 5 November 2004 stating that  
the sapphires are natural and of Ceylon (Sri Lanka) origin.  
**CHF 52,000-65,000**

306

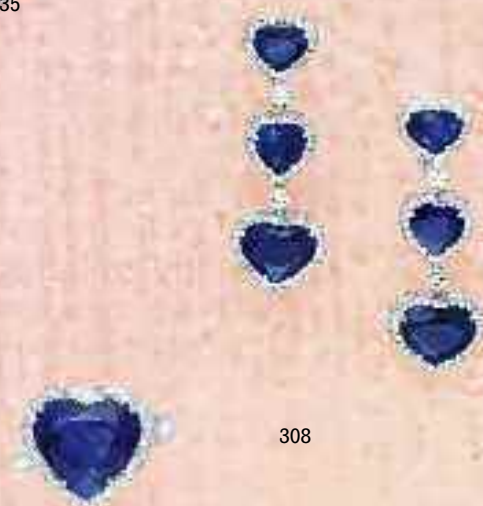


307



335

308





PROPERTY OF A LADY

309     **An Impressive Sapphire, Diamond and Coral 'Dolphin' Cuff Bracelet**  
Designed as a sculpted dolphin entirely decorated with oval-cut sapphires and circular-cut diamonds, enhanced with a series of graduated cabochon coral, mounted in 18K white gold.  
**CHF 30,000-50,000**

PROPERTY OF A LADY

310     **An Impressive Sapphire and Diamond 'Starfish' Cuff Bracelet**  
Of starfish design, the sculpted cuff bracelet entirely decorated with oval-cut sapphires and circular-cut diamonds and coloured diamonds, mounted 18K white gold.  
**CHF 40,000-60,000**

309



310





- 311

**A Diamond Necklace**

Designed as a flexible bombé band entirely decorated with circular-cut diamonds, mounted in 18K white gold, diameter 12 cm.  
The total weight of diamonds is 63.56 carats.

CHF 50,000-65,000
- 312

**A Pair of Agate and Pearl Earclips VERDURA**

Each designed as an agate shell decorated with pearl accents, mounted in 18K white gold.  
Signed 'Verdura'

CHF 6,000-8,000
- 313

**A Pair of Cultured Pearl and Diamond Earrings**

Each designed as a pair of asymmetrical circular-cut diamond collet fringes terminating in a grey cultured pearl, mounted in 18K white gold.

CHF 4,000-5,000
- 314

**A Diamond Chalcedony and Sapphire Pin VAN CLEEF & ARPELS**

Off flowerhead design, centering upon a cabochon sapphire cluster pistil, extending six blue chalcedony petals to the circular-cut diamond borders, mounted in platinum, 3.8 cm.  
Signed 'Van Cleef & Arpels' and numbered

CHF 20,000-30,000

311



312



313



314





PROPERTY OF A GENTLEMAN

- 315     **An Art Deco Diamond and Sapphire Brooch**  
The rectangular plaque decorated with pavé-set and old-cut diamonds, enhanced with blue sapphires and synthetic blue sapphires, mounted in platinum, length 7 cm.  
**CHF 3,200-4,500**

PROPERTY OF A GENTLEMAN

- 316     **A Pair of Sapphire and Diamond Earrings**    circa 1950  
Each of cluster design, centering upon a circular-cut sapphire within an old-cut diamond surround, mounted in white gold.  
**CHF 3,200-4,800**

- 317     **An Art Deco Diamond and Sapphire Bracelet**  
Designed as a series of baguette-cut and old-cut diamonds enhanced with square-cut sapphires, mounted in platinum.  
With French assay marks  
**CHF 45,000-65,000**

- 318     **An Art Deco Pair of Diamond and Platinum Double-Clips**    circa 1930  
Each designed as a papyrus flower decorated with old-cut diamonds, mounted in platinum, 4.8 x 4 cm.  
**CHF 25,000-30,000**

315



316



317



318





- 319

**A Diamond Necklace** HAMMERMAN BROS.

Designed as a flexible collar of five rows of circular-cut diamonds mounted in 18K yellow gold, length 41 cm.

Signed 'HB' for Hammerman Bros.

CHF 30,000-35,000
- 320

**A Diamond 'Flower' Ring**

Of floral design, set with a pear-shaped yellow diamond cluster pistil, extending sculpted overlapping petals entirely decorated with yellow diamonds, mounted in 18K yellow and rose gold, size 6.

CHF 4,000-5,000
- 321

**A Pair of Diamond Earclips** VAN CLEEF & ARPELS

Each of flowerhead design, set to the center with a circular-cut yellow diamond cluster pistil, extending circular-cut diamond petals, mounted in 18K yellow gold, length 2.5 cm.

Signed 'Van Cleef and Arpels'

CHF 2,500-4,000
- 322

**A Diamond and Coral Clip** CARTIER circa 1955

Designed as a horse, the body composed of navette-shaped cabochon coral and a pavé-set diamond head enhanced with an emerald-set eye, mounted in gold, length 4.5 cm.

Signed 'Cartier'

CHF 9,000-12,000
- 323

**A Set of Three Rings** VAN CLEEF & ARPELS circa 1970

Each designed as a coral, green agate or onyx tapering band, centrally enhanced with a pavé-set diamond band, mounted in 18K yellow gold, size 3.

Signed 'VCA'

CHF 3,500-4,500

319



320



321



322



323





- 324

**An Impressive Diamond Necklace**

Designed as a series of twenty-one rose-cut diamond orbs to the pavé-set diamond spacers, mounted in 18K white gold, length 42 cm.

CHF 55,000-65,000
- 325

**A Pair of Agate and Diamond Earpendants** MARGHERITA BURGNER

Each surmount designed as a cabochon agate within a circular-cut diamond surround suspending circular-cut diamond lines terminating in similarly set cabochon agates, mounted in 18K white gold, length 6 cm.

CHF 5,000-7,000
- 326

**A Pair of Amethyst and Lavendar Jade-Jadeite Earpendants** MARGHERITA BURGNER

Each surmount designed as an inverted pear-shaped amethyst within a pavé-set diamond surround to the similarly set circular-cut black diamond, suspending a pear-shaped cabochon purple jade-jadeite drop within a pavé-set diamond surround, mounted in 18K white gold.

CHF 7,500-9,500
- 327

**An Elegant Diamond Cuff Bracelet**

Of curved spring band design, composed of nine rows of circular-cut diamonds, mounted in 18K white gold.

The total diamond weight is 42.28 carats.

CHF 45,000-55,000

324



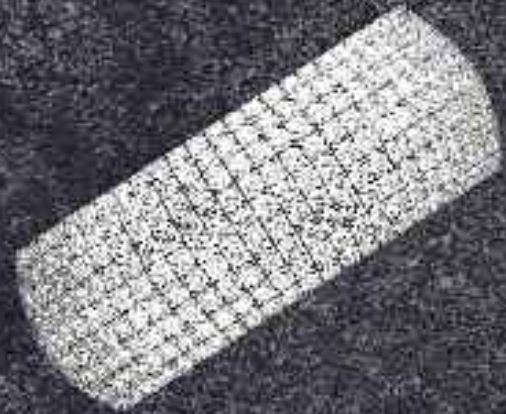
325



326



327





328      **A Sapphire Diamond and Turquoise Suite of Jewelry** BOUCHERON circa 1960  
Comprising a necklace, designed as a graduated series of floral motifs decorated with circular-cut diamonds, cabochon turquoise and sapphires; a bracelet, a pair of earclips and a brooch en suite, mounted in 18K yellow gold.  
Signed 'Boucheron.' With French assay marks  
CHF 60,000-80,000

329      **A Pair of Diamond and Gold Clips** VANCLEEF & ARPELS circa 1940  
The stylized openwork gold leaves highlighted with circular-cut diamonds, mounted in platinum and 18K yellow gold, 4.3 cm.  
Signed with jeweler's mark and numbered. With French assay marks  
CHF 8,000-11,000



328

329



- 330

**A Diamond Necklace**

circa 1960

Designed as a series of circular-cut and baguette-cut diamond links, the front suspending a graduated series of circular-cut diamonds, mounted in 18K yellow gold.

CHF 100,000-140,000
- 331

**A Pair of Pearl and Diamond Earrings**

MARIO BUCCELLATI

Each surmount of lace-motif design decorated with circular-cut diamonds, suspending a larger pendant of similar design, centrally enhanced with a South Sea cultured pearl, mounted in 18K yellow gold.

Signed 'M.Buccellati'

CHF 45,000-60,000
- 332

**A Diamond and Gold Ring**

MARIO BUCCELLATI

Designed as a wide textured gold band decorated with circular-cut diamond floral motifs to the circular-cut diamond borders, mounted in 18K yellow gold, size 5.

Signed 'M.Buccellati'

CHF 6,000-8,000
- 333

**A Diamond and Gold Ring**

BUCCELLATI

Of bombé design, the wide textured gold band enhanced with circular-cut diamond lozenge motifs, mounted in 18K yellow gold, size 6 3/4.

Signed 'M. Buccellati'

CHF 8,000-10,000
- 334

**A Diamond and Gold Ring**

MARIO BUCCELLATI

Designed as a wide textured gold band of openwork lace motif design, decorated with circular-cut diamonds, mounted in 18K white and yellow gold.

Not signed

CHF 9,000-12,000

330



331



332



333



334





335

**An Impressive Sapphire and Diamond Ring**

Set to the center with an oval-cut sapphire weighing approximately 31.90 carats, within a pavé-set diamond surround and hoop, mounted in platinum, size 6.5.

With report no. 11004206 dated 13 November 2003 from the AGTA Gemological Testing Center stating that the sapphire is natural.

**CHF 100,000-140,000**





336      **A Diamond Brooch** CARTIER circa 1935  
Designed as a pair of peony flowers decorated with pavé-set diamonds, centrally enhanced with a circular-cut diamond cluster pistil, the larger flower embellished with a single pear-shaped diamond, mounted in platinum, length 7.1cm.  
Signed 'Cartier'  
CHF 45,000-60,000

337      **An Important Sapphire and Diamond Bracelet** VANCLEEF&ARPELS circa 1980  
Designed as a flexible ribbon of three rows of mystery-set calibré-cut sapphires, to the circular-cut diamond borders, mounted in platinum and 18K yellow gold, length 17.5 cm.  
With French assay marks and numbered  
CHF 150,000-200,000

336



337





PROPERTY OF AN EUROPEAN ESTATE

338

**An Important Diamond Ring** CARTIER circa 1950

Centering upon a rectangular-cut diamond weighing approximately 15.38 carats, framed by baguette-cut diamond shoulders.

GIA report information available upon request.

**CHF 162,000-240,000**

338





339

**An Important Emerald and Diamond Necklace**

The front suspending a pear-shaped Colombian emerald weighing approximately 12.21 carats, within a pavé-set diamond surround, to the outer border of graduating rose-cut diamonds and circular-cut diamond accents, suspending from a fancy link rose-cut diamond chain, mounted in platinum.

With report no. CS36672 dated 15 December 2003 from the American Gemological Laboratories stating that the emerald is of Colombian origin with no evidence of clarity enhancement.

CHF 200,000-300,000

340

**A Diamond Eternity Ring**

Composed of eighteen graduated marquise-cut diamonds, mounted in platinum Ring size 6 1/2.

CHF 10,000-15,000

341

**A Diamond and Emerald Ring**

Set to the center with a rectangular-cut emerald weighing approximately 4.48 carats, within a circular and marquise-cut diamond surround, mounted in 18K yellow gold.

With report no. 17131 dated 19 December 2005 from the French Gemological Laboratory stating that the emerald is of Colombian origin with no oil or resin.

CHF 40,000-50,000



339



340



341



- 342      **An Art Deco Diamond and Rock Crystal Brooch** circa 1925  
Of buckle design, centering upon a rock crystal ring, the joints enhanced with pierced pavé-set diamond foliate designs, mounted in platinum and gold, length 8.3 cm.  
CHF 16,000-20,000
- 343      **An Art Deco Diamond and Sapphire Bracelet** circa 1930  
Designed as a series of buckle-shaped links, decorated with square-cut sapphires to the old-cut and baguette-cut diamond links, mounted in platinum, length 18 cm.  
CHF 48,000-60,000
- 344      **An Art Deco Diamond Bracelet** circa 1930  
Designed as a series of three rectangular pierced panels decorated with circular and baguette-cut diamonds, mounted in platinum, length 18.5 cm.  
CHF 38,000-45,000
- 345      **An Art Deco Diamond Onyx and Rock Crystal Surete Pin** circa 1925  
Of buckle design, centering upon a rectangular rock crystal ring and old-cut diamond twin strap, to the stylized arrowhead terminals enhanced with buff top onyx detail, mounted in platinum, length 7.1 cm.  
CHF 16,000-20,000

342



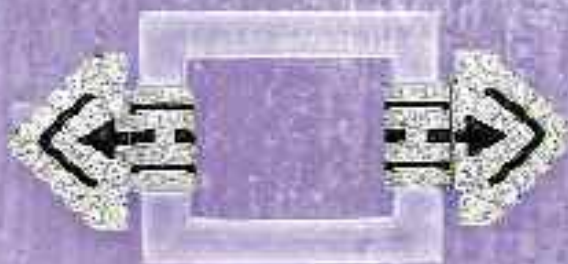
343



344



345









346

346

#### **An Important Pair of Diamond Earrings**

Each scrolling pavé-set diamond surmount extending a series of baguette-cut diamonds, to the baguette-cut diamond spacer, suspending an old-cut pear-shaped diamond weighing approximately 4.05 and 3.56 carats, mounted in platinum, length 3.5 cm.

With reports no. 16377765 and 16377768 dated 2008 from the Gemological Institute of America stating that the diamonds are respectively D and E colour with Internally Flawless clarity.

With report nos. 16377765 and 16377768 stating that according to the GIA Laboratory the pear-shaped diamonds weighing 4.05 and 3.56 carats are both Type IIA diamonds. Type IIA diamonds are the most chemically pure type of diamond and often have exceptional optical transparency.

**CHF 400,000-550,000**



347

347

#### **A Magnificent Unheated Burmese Sapphire and Diamond Ring**

Set to the center with an oval-cut unheated Burmese sapphire weighing approximately 27.28 carats, framed by trillion-cut diamond shoulders, mounted in platinum, size 6 1/2.

With *copy* of report no. GRS2004-110598 dated 16 November 2004 from the Gem Research Swiss Lab stating that the origin of this natural sapphire is Burma with no indications of thermal enhancement.

Please inquire about additional certificate information.

**CHF 285,000-380,000**



348

**A Unique Diamond and Ruby Bead Necklace VAN CLEEF & ARPELS**

Designed as three swagged rows of faceted ruby beads interspersed with faceted diamond beads, joined by a pavé-set diamond clasp of flowerhead design.

With report no. 0710078 dated 17 October 2007 from the Gübelin Gem Laboratory stating that the rubies are of Burma origin with no indication of heat enhancement.

**CHF 65,000-75,000**

349

**A Diamond Ring**

Set to the center with a rectangular-cut diamond weighing approximately 6.52 carats, framed by tapered baguette-cut diamond shoulders, mounted in platinum, size 5.5.

With report no. 16194478 dated 20 June 2007 from the Gemological Institute of America stating that the diamond is J colour with VS1 clarity.

**CHF 120,000-160,000**

348



349







350

**A Magnificent Heart Diamond Pendant**

The heart-shaped diamond weighing approximately 10.05 carats, within a circular-cut diamond surround, to the fine trace-link chain, mounted in platinum.

With report no. 16245243 dated 19 October 2007 from the Gemological Institute of America stating that the diamond is D colour with Internally Flawless clarity and Excellent-Excellent Cut Grade.

CHF 1,250,000-1,500,000



350



351

351

**A Magnificent Diamond Pendant**

The pear-shaped diamond weighing approximately 5.09 carats, to the fine trace-link chain, mounted in platinum.

With report no. 16776498 dated 10 January 2008 from the Gemological Institute of America stating that the diamond is D colour with Internally Flawless clarity and Excellent-Excellent Cut Grade.

CHF 500,000-600,000



352      **An Important Pair of Fancy Intense Yellow Diamond Earrings**

Each rectangular radiant-cut fancy intense yellow diamond weighing approximately 3.46 and 3.37 carats, within a circular-cut diamond surround and surmount, mounted in platinum.

With report nos. 16242298 and 15694078 dated 28 August 2007 from the Gemological Institute of America stating that the diamonds are Fancy Intense Yellow with VVS2 and VS2 clarity.

**CHF 100,000-130,000**

353      **An Important Emerald and Diamond Ring**

Set to the center with a rectangular-cut emerald weighing approximately 9.14 carats, framed by trillion-cut diamond shoulders, mounted in platinum and 18K yellow gold, size 6.5.

With report no. 0608527 dated 23 August 2006 from the GÜBELIN Gem Lab stating that the natural emerald is Colombian with minor clarity enhancement.

**CHF 70,000-100,000**

352



353





- 354

**An Emerald and Diamond Necklace**

Designed as a circular-cut diamond line, the front suspending marquise-cut diamond fringes terminating in graduating cabochon emerald drops, mounted in 18K white gold, length 25 cm.

CHF 48,000-60,000
- 355

**A Pair of Diamond Earrings**

Each surmount designed as a circular-cut diamond within a circular-cut diamond surround, suspending a similarly-set pear-shaped diamond, mounted in 18K yellow gold, length 2.5 cm.

CHF 15,000-20,000
- 356

**A Fancy Yellow Diamond Ring**

Set to the center with a radiant-cut fancy yellow diamond weighing approximately 7.65 carats, within a circular-cut diamond surround to the trapeze-cut diamond shoulders, mounted in platinum, size 7.

CHF 70,000-90,000
- 357

**A Diamond Emerald and Platinum Bracelet** circa 1930

Centering upon a rectangular-cut emerald weighing approximately 23.50 carats, extending a tapering series of pavé-set diamond half-moon shaped links, mounted in platinum.

CHF 65,000-80,000

354



355



356



357





- 358

**A Diamond Necklace**

VAN CLEEF & ARPELS

circa 1945

Designed as a series of links composed of a cluster of two marquise-cut diamonds and two square-cut diamonds, to the circular-cut diamond backchain and marquise-cut diamond clasp, mounted in platinum.  
Signed 'Van Cleef & Arpels' and numbered.

CHF 130,000-160,000
- 359

**A Pair of Diamond Earclips**

Each surmount centering upon a baguette-cut diamond extending a pavé-set diamond crescent-shaped hoop to the circular-cut diamond border, mounted in platinum diameter 1.5 cm.

CHF 5,500-6,500
- 360

**A Diamond Ring**

Centering upon a circular-cut diamond weighing approximately 6.25 carats, within a circular-cut diamond surround and shoulders, to the plain hoop.

CHF 32,000-50,000
- 361

**A Cultured Pearl and Diamond Bracelet**

The triple-row band bracelet composed of fifty-seven cultured pearls measuring approximately 5.5 mm to 6.0 mm, to the diamond accented gold bar link spacers and clasp of floral motif, set throughout with circular-cut diamonds and enhanced by a single cultured pearl, mounted in 14K white gold, length 7 cm.

CHF 4,000-6,000

358



359



360



361





362      **A Pair of Diamond and Fancy Pink Diamond Earpendants**  
Of fan motif, each designed as a series of tapered kite-shaped diamonds weighing approximately 9.24 carats in total, to the fancy pink diamond spacers, mounted in platinum and 18K rose gold, length 4.5 cm.  
**CHF 35,000-40,000**

PROPERTY OF A PRIVATE COLLECTION

363      **A Diamond Bracelet** circa 1950  
Of foliate motif, designed as a slightly tapering series of thirty-six pear-shaped diamonds, enhanced by a central line of baguette-cut daimonds, mounted in platinum.  
**CHF 75,000-85,000**

PROPERTY OF A LADY

364      **A Diamond Ring**  
Set to the center with an oval-cut diamond weighing approximately 13.59 carats, framed by pear-shaped diamond shoulders to the plain hoop, mounted in 18K white gold.  
With report no. 20024429101 dated 18 October 2002 from HRD Laboratory stating that the diamond is L colour and VS2 clarity  
**CHF 105,000-130,000**

362



363



364





PROPERTY OF A GENTELMAN

365

**An Art Nouveau Enamel Glass and Gold Pendant LALIQUE**

Centering upon a carved coloured glass representing a bouquet of flowers, enhanced with pliqué-à-jour enamel bees, mounted in 18K yellow gold.

Signed 'Lalique' with original case inscribed 'R.Lalique, 40 cours la Reine, Paris'

**CHF 75,000-90,000**





366      **A Unique Sapphire and Diamond Necklace and Earpendants Suite** DE GRISOGONO

Designed as multiple chains of oval-cut blue sapphires, gathered by and terminating in a spherical orb entirely decorated with circular-cut diamonds and blue sapphires with star motifs, mounted in 18K white and blackened white gold, length 61 cm.

Signed 'De Grisogono'

**CHF 60,000-80,000**

PROPERTY OF A GENTLEMAN

367      **An Unheated Ceylon Sapphire and Diamond Ring**

Set to the center with a cushion-cut unheated ceylon sapphire weighing approximately 15.21 carats, flanked on either side by triangular-cut diamonds, mounted in 18K white gold, size 6.

With French assay marks

With report no. 2007-081771 dated 10 August 2007 from the Gem Research Swiss Lab stating that the sapphire is of Ceylon origin with no evidence of heat enhancement.

**CHF 70,000-80,000**



366

367





368      **An Important Diamond Necklace** VANCLEEF & ARPELS circa 1940  
Designed as a series of baguette-cut diamonds to the circular-cut diamond border, joined at the shoulders with pavé-set diamond buckle-shaped links (can be separated to form a necklace and bracelet), mounted in platinum, length 37 cm.  
Signed 'Van Cleef & Arpels.' With French assay marks  
CHF 250,000-280,000

369      **A Diamond Double-clip** BULGARI circa 1930  
Designed as a series of circular-cut diamond ribbons to the baguette-cut diamond borders, mounted in platinum and 18K white gold, length 4.6 cm.  
Signed 'Bulgari.' With French assay marks  
CHF 15,000-20,000

PROPERTY OF A LADY

370      **A Diamond Ring**  
Centering upon a circular-cut diamond weighing approximately 3.01 carats, to the plain hoop, mounted in white gold, size 6.  
CHF 12,000-15,000

368



369



370





PROPERTY OF A LADY

- 371

**A Diamond and Emerald Brooch** circa 1890

Of openwork swag and ribbon design, entirely decorated with old-cut diamonds, centering upon a cabochon emerald, the ribbon terminals suspending old-cut diamond collets, mounted in platinum, 8.5 cm.

With French assay marks

**CHF 15,000-20,000**
- 372

**A Pair of Diamond Earpendants** circa 1910

Each designed as an old-cut diamond to the white gold mounting surmount enhanced with diamond accents.

**CHF 100,000-120,000**
- 373

**A Diamond and Conch Pearl Brooch MELLERIO** circa 1920

Designed as floral garlands of pierced openwork motif, decorated with circular, baguette, and shield-cut diamonds, suspending a drop-shaped conch pearl, mounted in platinum, length 4.8 cm.

Signed 'Mellerio' and numbered. With French assay marks

**CHF 55,000-65,000**

371



372



373





374



375



374

**A Unique Diamond and Ruby 'Sphera' Bracelet ENIGMA**

Of cross-over design, the curved springband bracelet composed of a graduated series of pavé-set diamond circular links, terminating in pavé-set ruby and diamond spheres enhanced with polka dots motifs, mounted in 18K white gold, diameter 7.3 cm.

Signed 'ENIGMA'

**CHF 30,000-40,000**

PROPERTY OF A LADY

375

**A Diamond 'Lips' Ring ENIGMA**

The front designed as lips entirely decorated with circular-cut diamonds, to the plain hoop, mounted in 18K white gold, size 6.

Signed 'ENIGMA'

**CHF 6,000-8,000**

Originally established in 1989 as a Neuchâtel-based watch manufacturing company, Enigma has distinguished itself by creating innovative timepieces such as a collection of unusual jumping hours, a mechanical watch that rewinds by turning the bezel, and by setting diamonds on steel cases, as early as 1991. In 2003, Enigma introduced and launched a fine jewellery collection available through its own retail stores in Rome, Geneva, and Porto Cervo. Enigma jewels are recognizable for their strong, individual design inspired by Gianni Bulgari, its founder and owner. Gianni Bulgari is the former Chairman and CEO of the eponymous family business, which he left in 1987. In 2006, a book entitled "Enigma, Jewels by Gianni Bulgari" was published.

376



377



376

**A Diamond Spinel and Gold 'Lion' Bracelet ENIGMA**

The highly flexible wide bracelet of checkerboard design, centering upon a lion motif, enhanced with square and round-cut black spinels and brilliant-cut white diamonds, mounted in 18K white and rose gold, length 12.3 cm. (adjustable chain).

Signed 'ENIGMA'

CHF 15,000-22,000

378



377

**A Gold and Diamond 'Bambu' Ring ENIGMA**

The bombé polished rose gold mount, centrally enhanced by pavé-set diamonds and a central black enamel inlay, mounted in 18K rose and white gold, size 6 1/2.

Signed 'ENIGMA'

CHF 4,500-6,000

378

**A Gold and Diamond 'Bambu' Bracelet ENIGMA**

Of flexible design and bamboo motif, each articulated gold module interspersed with a diamond pavé-set half-sphere link, mounted in 18K rose and white gold, length 17.5 cm.

Signed 'ENIGMA'

CHF 15,000-20,000



379      **A Pair of Diamond Earpendants**  
Each designed as a cascading series of collet-set circular-cut diamonds, mounted in platinum, length 6.2 cm.  
The total diamond weight is 16.59 carats.  
**CHF 25,000-35,000**

380      **A Diamond Longchain Necklace**  
Of spectacle-set longchain design, composed of a series of circular-cut diamond collets, mounted in 18K white gold, length 172 cm.  
The total diamond weight is 59.92 carats.  
**CHF 55,000-75,000**

381      **A Pair of Ruby and Diamond Cufflinks**  
Each square-shaped double-link enhanced with calibr  -cut rubies or diamonds and smaller circular-cut diamond or ruby accents, mounted in 18K white gold, length 1 cm.  
**CHF 3,000-4,000**

382      **A Pair of Pink Tourmaline and Diamond Earpendants** MARGHERITA BURGNER  
Each designed as two fringes of alternating rectangular-cut pink tourmalines and circular-cut diamonds, mounted in 18K white gold, length 7.2 cm.  
**CHF 4,000-6,000**

379



380



382



381





383

**An Impressive Diamond and Gold 'Select' Watch JAHAN**

The rectangular 18K white gold case, entirely decorated with circular-cut diamonds, to the similarly-set bezel and lugs, extending a satin finish black strap, mounted in 18K white gold, length 22 cm.

Dial and caseback signed 'Jahan' and numbered

**CHF 20,000-30,000**

The jewelry house of JAHAN, headquartered in Geneva, Switzerland since 1980, is known worldwide for their unique and spectacular parures. Their faithful clients include the royal families of the Persian Gulf, and for many years, JAHAN was the purveyor of precious jewels to the Shahs of Iran.

Their creations sparkle from the windows of the newly re-opened and elegant salon in Geneva's prestigious rue du Rhone, as well as in boutiques in Saudi Arabia.

Several years ago, Mr. Shapour Jahan, launched and introduced a line of watches for both men and women. Unique in design, with the highest standard of craftsmanship, these Swiss-made timepieces are all in limited editions. Phillips de Pury & Company is pleased to offer one of these exceptional watches in their sale.





384      **A Diamond Tassel Necklace and Earpendants**

Comprising a necklace, the front suspending a tassel of circular-cut diamond fringes terminating in black diamond beads and pavé-set diamond boules, to the fancy chain of black diamond beads and circular-cut diamond links, similarly designed earpendants en suite; earpendants 9.2 cm.

The total weight of white diamonds is 32.24 carats.

The total weight of black diamonds is 103.88 carats.

**CHF 80,000-100,000**

385      **An Onyx and Diamond Dress Set MARGHERITA BURGENER**

Comprising a pair of cufflinks, each double-link set with a circular bombé onyx plaque, enhanced with a circular-cut diamond collet, joined by a polished white gold curved bar link; four dress studs en suite, mounted in 18K white gold.

Signed 'Margherita Burgener'

**CHF 3,000-5,000**

PROPERTY OF A LADY

385A      **A Diamond Eternity Band**

Of twenty-two circular-cut diamonds, mounted in Platinum, size 7 1/4.

**CHF 2,000-2,200**

386      **A Pair of Onyx and Diamond Earpendants MARGHERITA BURGENER**

Each designed as a series of graduated rectangular onyx plaques connected with pavé set diamond bar link spacers and surmount, mounted in 18K white gold, length 7.5 cm.

Signed 'Margherita Burgener'

**CHF 2,400-3,500**



384



385A



386



385





387      **A Pair of Diamond Earpendants**  
Each pavé-set diamond surmount suspending a series of graduated baguette-cut diamond fringes terminating in marquise-cut diamonds, mounted in 18K white gold, length 8 cm.  
CHF 15,000-18,000

388      **A Unique Emerald, Diamond and Pearl Necklace**  
The front suspending a lozenge-shaped emerald weighing approximately 12.54 carats, framed by a pavé-set diamond and emerald snake motif to the circular-cut diamond cap, suspending a tassel of pearl fringes terminating in emerald beads, to the spectacle-set diamond and pearl long chain, mounted in platinum.  
CHF 55,000-70,000

PROPERTY OF A LADY

389      **An Art Deco Emerald and Diamond Ring**  
Of open work design, set to the center with three circular-cut emeralds framed by circular-cut diamonds, mounted in platinum, size 6 1/2.  
CHF 2,000-3,000

387



388



389





PROPERTY OF AN EUROPEAN ESTATE

390     **A Diamond Necklace** CARTIER circa 1950  
The front suspending three swagged circular-cut diamond rows, to the baguette-cut diamond scrolling shoulder links, to the circular-cut diamond single line backchain, mounted in platinum.  
Signed 'Cartier,' with jeweler's mark and number. With French assay marks  
**CHF 32,000-48,000**

PROPERTY OF AN EUROPEAN ESTATE

391     **A Rare Pair of Diamond Earpendants** CARTIER circa 1950  
Designed as a series of graduated circular and baguette-cut diamond spiral motifs, mounted in platinum, length 8.4 cm.  
Signed 'Monture Cartier.' With jeweler's mark and numbered. With French assay marks  
**CHF 24,000-30,000**

PROPERTY OF AN EUROPEAN ESTATE

392     **A Diamond and Ruby Ring** CARTIER circa 1950  
Of cross-over design, the pavé-set diamond bombé terminals enhanced with a pear-shaped ruby and diamond, mounted in 18K yellow gold and platinum, size 2 1/2.  
Signed 'Cartier' with jeweler's mark. With French assay marks  
**CHF 13,000-20,000**

390



391



392





PROPERTY OF A LADY

393      **An Important Diamond ‘Lovebird’ Brooch** CARTIER

Designed as a pair of lovebirds entirely decorated with circular-cut diamonds perched on a platinum branch, mounted in platinum.

Signed ‘Cartier’ and numbered. With French assay marks.

With original fitted box.

**CHF 20,000-30,000**

PROPERTY OF AN EUROPEAN ESTATE

394      **A Diamond Bracelet** CARTIER circa 1950

Designed as a series of circular-cut and pear-shaped diamonds in a lattice motif, mounted in platinum.

Signed ‘Cartier’ with jeweler’s mark and numbered. With French assay marks

**CHF 32,000-48,000**

PROPERTY OF AN EUROPEAN ESTATE

395      **A Lady’s Diamond and Platinum Wristwatch** circa 1950

The square case and square-link bracelet entirely decorated with baguette-cut diamonds, mounted in platinum and 18K white gold, length 15.4 cm.

With French assay marks

**CHF 10,000-15,000**

396      **A Rare Colour-Changing Sapphire and Diamond Ring**

Set to the center with an oval-cut colour-changing sapphire, weighing approximately 8.51 carats, within a circular-cut diamond surround, mounted in 18K white gold, size 7.

**CHF 15,000-18,000**

393



394



395



396





397      **An Art Deco Diamond and Onyx Jabot Pin**  
Designed as two arches of Chinese motif, decorated with circular-cut diamonds and black lacquer, mounted in platinum and white gold, 5.2 x 2.2 cm.  
**CHF 11,000-13,000**

398      **An Art Deco Diamond and Onyx Brooch**  
Of neo-Egyptian motif, the pierced pavé-set rose-cut diamond rectangular form decorated with a cabochon onyx papyrus detail, enhanced with two black enamel rings, mounted in platinum and white gold, 6.5 x 2.2 cm.  
**CHF 6,000-8,000**

399      **A Diamond and Pearl Bracelet** SUZANNE BELPERRON circa 1930  
Designed as five rows of pearls to the triangular pearl clasp decorated with circular-cut diamond accents, mounted in 18K white gold, length 15.4 cm.  
**CHF 13,000-18,000**

PROPERTY FROM A PRIVATE COLLECTION

400      **A Pair of Diamond Earrings**  
Each designed as an old-cut diamond weighing approximately 4.20 and 4.40 carats, mounted in platinum.  
**CHF 32,000-40,000**

397



398



399



400





401      **A Jade-Jadeite Ruby and Pearl Bracelet** CARTIER circa 1925

Designed as a series of pale green jade-jadeite plaques carved with sculpted dragon motifs, mounted in 18K yellow gold, highlighted with cabochon emeralds and rubies, to a pearl accented border.

Signed 'Cartier' and numbered. With French assay marks

CHF 45,000-55,000

402      **A Rare Diamond Sapphire and Emerald Bangle** CARTIER circa 1940

The front of paisley design, decorated with a central line of graduated cabochon emeralds, highlighted with circular-cut diamonds and cabochon sapphires, mounted in 18K yellow gold.

With jeweler's mark for Cartier and French assay marks

CHF 60,000-80,000

403      **A Diamond and Sapphire Lapel Clip** BOUCHERON circa 1935

Designed as a scrolling shield form, decorated with pavé-set old-cut diamonds, enhanced with square-cut sapphires, mounted in 18K yellow gold, 4 cm.

Signed 'Boucheron.' With French assay marks

CHF 5,000-7,000

404      **A Rare Diamond Sapphire and Citrine Clip** TIFFANY circa 1955

Of openwork foliate motif, decorated with oval citrines, sapphires and circular-cut diamonds, centering upon a carved foliate sapphire, mounted in 18K yellow gold, 7.5 x 5.7 cm.

Signed 'Tiffany & Co.' With French assay marks

CHF 30,000-40,000

401



402



403



404





405      **A Diamond Emerald Ruby and Cultured Pearl Necklace** VAN CLEEF & ARPELS circa 1930  
Designed as a graduated series of alternating fluted cabochon emeralds, ruby beads and cultured pearls, to the circular and baguette-cut diamond buckle clasp, mounted in platinum, length 60 cm.  
Signed 'Van Cleef & Arpels' and numbered  
**CHF 10,000-15,000**

406      **A Rare Pair of 'Tutti Frutti' Ruby and Diamond Lapel Clips** CARTIER circa 1925  
Each designed as a shield-shaped plaque decorated with circular-cut diamonds with carved rubies of foliate motif, mounted in platinum, length 3.5 cm.  
Signed 'Cartier'  
**CHF 40,000-50,000**

407      **A Pair of Emerald and Diamond Earpendants** ALETTO BROTHERS circa 1945  
Each detachable invisibly-set calibr -cut emerald drop, to the circular-cut diamond cap of foliate motif, mounted in platinum, length 5 cm.  
Signed 'Aletto Bros'  
**CHF 40,000-55,000**

408      **A Diamond and Ruby Bracelet** circa 1930  
Designed as a series of seven oval cabochon rubies interspersed with pav -set and baguette-cut diamond links, mounted in platinum, length 17 cm.  
**CHF 18,000-24,000**

405



406



407



408





409      **An Impressive Diamond and Pearl Necklace** JOSEPH CHAUMET circa 1910  
Designed as three rows of natural pearls, joined at the front with an old-cut diamond ring and surmount cap, suspending a tassel of natural pearls, mounted in platinum, length 80 cm.  
With jeweler's mark for Joseph Chaumet. With French assay marks  
CHF 45,000-65,000

410      **A Pair of Diamond Earpendants**  
Each rectangular-cut diamond surmount to the pear-shaped fancy yellow diamond spacer, suspending a French-cut diamond, mounted in white gold.  
CHF 8,000-11,000

411      **An Art Deco Diamond Brooch** circa 1925  
Of scrolling design, decorated with circular-cut diamonds and a black enamel border, centrally enhanced with a larger old-cut diamond, mounted in platinum.  
CHF 13,000-18,000





409

410



411





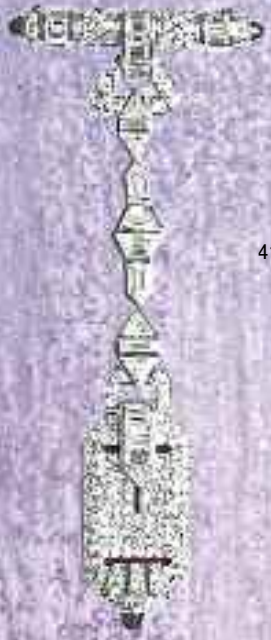
412      **An Art Deco Diamond and Platinum Lapel Watch**  
The rectangular case highlighted with circular and baguette-cut diamonds and red enamel.  
The barrette and watch chain enhanced with trapeze-cut and triangular-cut diamonds and onyx terminals, mounted in platinum, length 8.3 cm.  
**CHF 14,000-18,000**

PROPERTY OF A LADY

413      **A Diamond Necklace** circa 1960  
Designed as a baguette-cut diamond line, the front enhanced with a scrolling double line of graduating circular-cut diamonds, mounted in platinum.  
With French assay marks  
**CHF 90,000-120,000**

PROPERTY OF A LADY

414      **A Diamond and Platinum Wristwatch** JAEGERLECOULTRE circa 1950  
The circular dial within a circular-cut diamond surround and baguette-cut diamond border, extending a tapering bracelet of of baguette and circular-cut diamond fan-shaped links, mounted in platinum.  
Dial signed 'Jaeger LeCoultre.' With French assay marks  
**CHF 20,000-25,000**



412



413



414



415     **An Important Pair of Diamond Earclips** GRAFF

Each designed as sculpted scrolling hoop, channel-set with rows of baguette-cut diamonds, mounted in 18K white gold.

Signed 'Graff' and numbered

CHF 65,000-75,000

416     **An Art Deco Diamond and Emerald Bracelet** circa 1930

Designed as four rectangular panels entirely decorated with old-cut and baguette-cut diamonds, centrally enhanced with a rectangular-cut emerald, mounted in platinum.

The emeralds are detachable and can form a ring or bar brooch (accompanied by fittings).

CHF 140,000-175,000

415



416





PROPERTY OF A FRENCH ESTATE

- 417

**An Important Sapphire Ring** circa 1920

Centering upon a cushion-cut sapphire weighing approximately 27.90 carats, mounted in platinum with diamond accents.

CHF 90,000-110,000



417

- 418

**An Art Deco Diamond Necklace** circa 1925

Of fringe motif, designed as a series of graduating curved rigid links entirely decorated with old-cut diamonds, mounted in gold and silver.

With French assay marks

CHF 50,000-70,000

- 419

**A Sapphire and Diamond Floral Pin** VANCLEEF & ARPELS circa 1945

Designed as two flowers, one daisy with calibré-cut sapphire petals and the other with circular-cut diamond petals, each centering upon a circular-cut diamond cluster pistil extending baguette-cut diamond stems and a pavé-set diamond leaf, mounted in platinum and 18K yellow gold, length 5 cm.

Signed 'Van Cleef & Arpels' and numbered. With French assay marks

CHF 30,000-40,000

- 420

**An Art Deco Pair of Diamond Clips** TRABERT & HOFFER-MAUBOUSSIN circa 1930

Of scrolling design, entirely decorated with baguette and circular-cut diamonds, mounted in platinum.

Signed 'Trabert & Hoeffler-Mauboussin'

CHF 13,000-18,000

418



419



420





421

**A Diamond and Ruby Necklace** circa 1820-1840

Designed as a graduating series of circular-cut ruby fringes, each within an old-cut diamond surround, mounted in gold and silver.

CHF 135,000-160,000





422

**A Pair of Magnificent Colombian Emerald and Diamond Earclips**

Each rectangular-cut emerald weighing approximately 15.69 and 16.30 carats, within a circular-cut diamond surround, mounted in platinum.

With report nos. 0801007 and 0801008 dated 08 January 2008 from the Gübelin Gem Lab stating that the origin of the emeralds are Colombian with evidence of moderate clarity enhancement.

**CHF 250,000-300,000**

422





423

**A Magnificent Diamond Necklace**

Designed as a graduating series of fifty-seven pear-shaped diamonds, weighing approximately 134.27 carats in total, enhanced at the front with a pear-shaped diamond drop, weighing approximately 11.05 carats, mounted in platinum.

With report no. 15156762 dated 18 July 2006 from the Gemological Institute of America stating that the diamond weighing 11.05 carats is D colour with Internally Flawless clarity.

With fifty-seven certificates dated from 29 November 2003 to 9 January 2007 from the Gemological Institute of America stating that the diamonds are D colour and ranging from VS to SI clarity.

**Estimate upon request**

424

**An Important Pair of Diamond Earclips**

Each surmount designed as an inverted pear-shaped diamond weighing approximately 2.17 carats to the larger pear-shaped diamond drop weighing approximately 5.00 carats and 5.32 carats, mounted in platinum, length 2.5 cm.

Accompanied by four certificates dated 24 February 2004 to 13 May 2005 from the Gemological Institute of America stating that the diamonds are D colour and range from VS2 to SI1 clarity.

**CHF 600,000-700,000**

423



424





PROPERTY OF A LADY

425     **A Rare Fancy Gray-Green Diamond Ring**  
Set to the center with an emerald-cut fancy gray-green diamond weighing approximately 3.27 carats, to the baguette-cut diamond shoulders, mounted in 18K white gold.  
With report no. 55373401 dated 29 January 2008 from the Gemological Institute of America stating that the diamond is natural fancy gray-green colour and VVS2 clarity.  
**CHF 285,000-350,000**

425





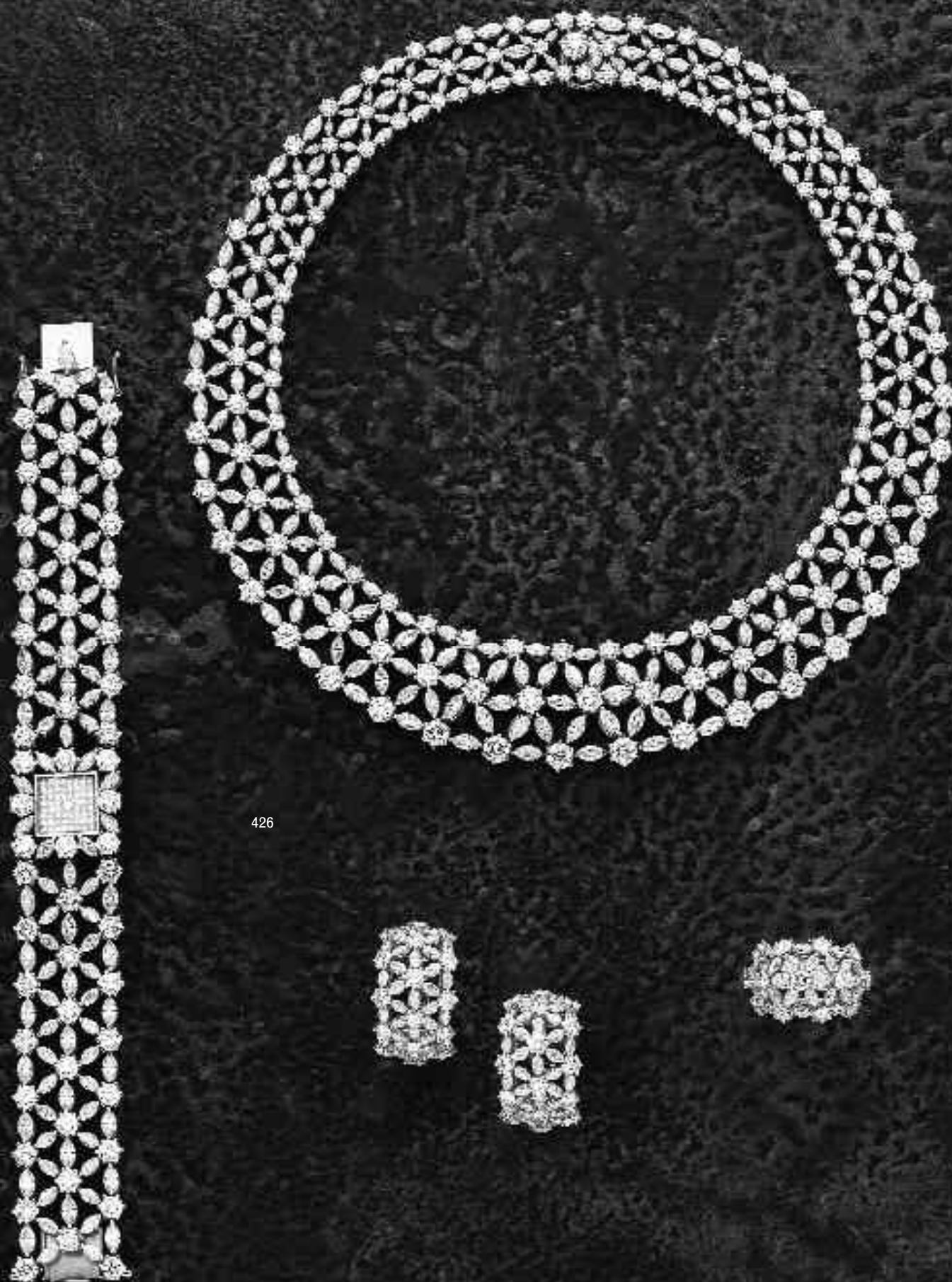
426

**An Impressive Diamond Suite** CHOPARD

Comprising a necklace, designed as an openwork lattice of circular and marquise-cut diamonds; watch, earrings, and ring of similar design en suite, mounted in 18K white gold.

Signed and numbered, with Swiss assay marks. With original fitted box.

**CHF 260,000-300,000**



426



PROPERTY OF A GENTLEMAN

427

**An Important Ruby and Diamond Necklace** VAN CLEEF & ARPELS circa 1960

The graduated line of cabochon ruby and circular-cut diamonds interspersed with floral diamond clusters, to the detachable cabochon ruby and diamond pendant/brooch, mounted in 18K yellow gold.

Signed 'VCA' and numbered. With French assay marks

**CHF 400,000-550,000**

