

WANNENES



MONTRES RARES

Monte-Carlo 8 Juillet 2024

E, ST... SENTIER, SOLEURE

gen für Armbe
Wristlet-wato

réf. 6542
s/38 3

N 765071



287
et
nsate
des
X
ne

THIS
has been examined
Geneva, Switzerland
and regulated at
THE ROLEX
by Rolex Bienne and
examined
the dependable function
of one year, damage result
Purchased from:

This Guarantee form should be attached whenever you

verticale, 3 heures
verticale, alle ore 3 a alto

Vertikal, 3 Uhr
Vertikal, 3 o'clock up

verticale, 3 h
verticale, all

Vertikal, 3 Uhr unten
Vertikal, 3 o'clock down

horizontal
Orizzontal

Horizon
Orizzo

Chronometer certificate

This is to certify that the Rolex Watch
Movement No
Case No

has been submitted to a Swiss Institute for
keeping Tests and has been awarded
Certificate No 6

N 7
11

merk "ROLEX"
Terbilang Rp. 30.000, =
Materal Rp. 0.50.

lot 607

Steenweg 65
Kalverstraat 1
Hoogstraat 23
te Lijnbaan 16

030-332244
020-266691
070-631977
010-139320
040-448955

By
Glich
New Ro
miesse



MONTRES RARES

MONTE-CARLO 8 JUILLET 2024

WATCHES

MONTE-CARLO, 8 JULY 2024



VENTE AUX ENCHÈRES AUCTION
Hôtel Metropole
4, avenue de la Madone
98000 Monaco

EXPOSITION - VIEWING
Hôtel Metropole
4, avenue de la Madone
98000 Monaco

MONTRES LUNDI 8 JUILLET
Monday 8 July

VENDREDI 5 JUILLET
15h - 20h
Friday 5 July
3pm - 8pm

Session Unique
14h00 lots 501 - 670
Unique Session
2 pm lots 501 - 670

DU SAMEDI 6 JUILLET AU DIMANCHE 7 JUILLET
10h - 13h et 14h - 20h
Saturday 6 July to Sunday 7 July
10am - 1pm & 2pm - 8pm



LUNDI 8 JUILLET
10h - 12h
Monday 8 July
10am - 12am

Les lots précédés d'un symbole *:
Pour cette vacation, un CITES de ré-export et un CITES d'import ont été délivrés à la fois par les autorités française et monégasque pour l'utilisation commerciale de ce spécimen à Monaco. Pour une sortie de l'UE, un CITES de ré-export sera nécessaire, celui-ci étant à la charge du futur acquéreur.
Après la vente l'acquéreur est prié de contacter des services administratifs compétents pour une demande de CITES d'export de Monaco puis d'import dans le pays de l'UE où il réside.
Les lots pourront être expédiés qu'aux adresses situées à Monaco ou bien pourront être retirés auprès notre siège situé à l'adresse 6, avenue Saint Michel Monaco.
For this auction, CITES re-export and CITES import permits were issued by both the French and Monegasque authorities for the commercial use of this specimen in Monaco. The purchaser of this specimen must apply to the relevant administrative departments for a CITES re-export or CITES import permit if the specimen leaves the EU.
Therefore any purchaser, residing in the EU will be able to apply to the relevant administrative department, for a CITES of export from Monaco, an then a CITES import in the EU.
The lots can only be shipped to addresses within Monaco or may be collected from our offices in Avenue Saint Michel 6.

Les lots précédés d'un symbole §
L'utilisation de ce spécimen est libre dans l'UE. Cependant la Principauté de Monaco n'est pas considérée comme faisant partie de l'UE lors de la vente d'objets contenant en partie ou en totalité des spécimens visés par la Convention de Washington, en conséquence, tout acheteur résident dans l'UE pourra solliciter, après la vente, auprès des services administratifs compétents une demande de CITES d'export de Monaco puis d'import dans le pays de l'UE où il réside.
Commercial use of this specimen is authorized in the EU. However, Monaco is not considered as part of the EU for any sale of goods containing of made of this specimen. Therefore, any purchaser, residing in the EU will be able to apply to the relevant administrative department, for a CITES of export from Monaco, and then a CITES import in the EU.

Les bracelets des lots indiquées sur le catalogue ne seront pas présentés lors de l'exposition à Monaco pour le règlements Cites, mais ils sont à votre disposition auprès notre bureau de Milan - à l'adresse Via Amedei, 8 sur rendez-vous.
The straps of the indicated lots on the catalogue will not be displayed during the exhibition in Monaco as for Cites regulations, but can be at customer's disposal in our Milan Office - Via Amedei, 8 by appointment.

Par le ministère de Maître Claire Notari, Huissier à Monaco
By the Ministry of Claire Notari Bailiff in Monaco

WANNENES

Cover:
Lots 604 et 615

La participation à la Vente aux enchères implique l'acceptation pleine et inconditionnelle des Conditions Générales de Vente contenues dans ce catalogue.
Les lots peuvent être retirés à partir de mercredi 10 Juillet uniquement sous réserve de rendez-vous par téléphone au +377 99 90 46 26
Taking part in the Auction implies the entire and unconditional acceptance of the Conditions of Sale outlined in this Catalogue.
The lots may be collected from Wednesday 10 July, by telephone appointment calling +377 99 90 46 26

lot 623

ROLEX OYSTER SWIMPRUF

ROLEX INTERNATIONAL SERVICE GUARANTEE

L7

Serial number:
16528

Model number:
29 novembre 2017 / 170

BUREAUX

GÈNES

Villa Carrega Cataldi
Via Albaro 11
16145 Genova
+39 010 2530097

MILAN

Palazzo Recalcati
Via Amedei, 8
20123 Milano
+39 02 72023790

ROME

Palazzo Sabbatini
Via F. P. de Calboli, 6
00195 Roma
+39 06 69200565

TURIN

Casa Ponzio-Vaglia
Via Giolitti, 45/C
10123 Torino
+39 011 0816100

MONTE-CARLO

Villa Celine
6, Avenue Saint Michel
98000 Monaco
+377 99 90 4626

BOARD

GUIDO WANNENES

CEO Wannenes Casa d'Aste
g.wannenes@wannenesgroup.com

STEFANO DELLA CROCE DI DOJOLA

Directeur Financier Wannenes Casa d'Aste
s.dellacroce@wannenesgroup.com

FABIO TIOZZO

Gérant Wannenes Monaco
f.tiozzo@wannenesgroup.com

MAURIZIO PIUMATTI

Directeur Général Wannenes Casa d'Aste
m.piumatti@wannenesgroup.com

ANDREA JACOPO FAVA

Wannenes Properties
aj.fava@wannenesgroup.com

LUCA MELEGATI

Directeur Milan Wannenes Casa d'Aste
l.melegati@wannenesgroup.com

STAFF

Giulia Wannenes

Responsable Qualité
g.checcucci@wannenesgroup.com

Adele Occhetti

Service Clients Gênes
a.occhetti@wannenesgroup.com

Martina Pastor

Service Clients Gênes
m.pastor@wannenesgroup.com

Erica Caldaroni

Service Clients Milan
e.caldaroni@wannenesgroup.com

Ekaterina Gulyakina

Service Clients Monaco
info.monaco@wannenesgroup.com

Luca Redenti

Responsable Salle de Vente

Gianluca Cuneo

Expéditions et livraisons Gênes

Chiara Guiducci

Responsable Service Clients
c.guiducci@wannenesgroup.com

Nicole Balestrero

Service Clients Gênes
n.balestrero@wannenesgroup.com

Ilaria De Pian

Service Clients Milan
i.depian@wannenesgroup.com

Anna Maria Giarrusso

Service Clients Rome
a.giarrusso@wannenesgroup.com

Barbara Baiardi

Administration
b.baiardi@wannenesgroup.com

Giulia Guccione Prata

Service Valuation
valutazioni@wannenesgroup.com

Yuri Lo Nobile

Expéditions et livraisons Gênes

Alessandro Vigo

ICT Manager
a.vigo@wannenesgroup.com

Camilla Aloï

Service Clients Gênes
info@wannenesgroup.com

Carola Antonioli

Service Clients Milan
c.antonioli@wannenesgroup.com

Alessandra Zanoglio

Service Clients Turin
a.zanoglio@wannenesgroup.com

Luciana Moratti Colonna

Administration
l.moratti@wannenesgroup.com

Lorenzo Colonna

Expéditions et livraisons Gênes

Dan Ungureanu

Expéditions et livraisons Milan

MARKETING ET COMMUNICATION

RAFFAELE BOCCHETTI

Responsable Marketing et Communication
r.bocchetti@wannenesgroup.com

LUCA VIOLO

Média et Communication
l.violo@wannenesgroup.com

REPRÉSENTANTS

Lombardia

Benedetta Gallizia di Vergano
+39 347 9023645
b.gallizia@wannenesgroup.com

Veneto

Christiane d'Albis
+39 338 9339811
c.dalbis@wannenesgroup.com

Piemonte

Chiara Benevolo Caroni
+39 351 0687570
c.benevolo@wannenesgroup.com

Francia

Claudia Pucci di Benisichi
+33 607 868050
c.pucci@wannenesgroup.com

Toscana

Cecilia Brunner Muratti
+39 335 6237244
c.brunnermuratti@wannenesgroup.com

MONTE-CARLO

6, avenue Saint Michel,
98000 Monaco
Tél +377 99 90 46 26
info.monaco@wannenesgroup.com

SERVICE CLIENTS

Client Services

Ekaterina Gulyakina

e.gulyakina@wannenesgroup.com

INFORMATIONS CONCERNANT LA VENTE

AUCTION ENQUIRIES AND INFORMATION

SPÉCIALISTES

SPECIALISTS IN CHARGE

Horlogerie / Watches

Giacomo Cora
g.cora@wannenesgroup.com

Michele Rosa

m.rosa@wannenesgroup.com

ADMINISTRATION - SERVICE CLIENTS

ORDRES D'ACHAT - ENCHÈRES PAR TÉLÉPHONE

ADMINISTRATION - CLIENT SERVICE
ABSENTEE BIDS - PHONE BIDS
Ekaterina Gulyakina
+377 99 90 46 26
e.gulyakina@wannenesgroup.com

ÉTAT DE CONSERVATION

CONDITION REPORTS

Tél. +377 99 90 46 26
info.monaco@wannenesgroup.com

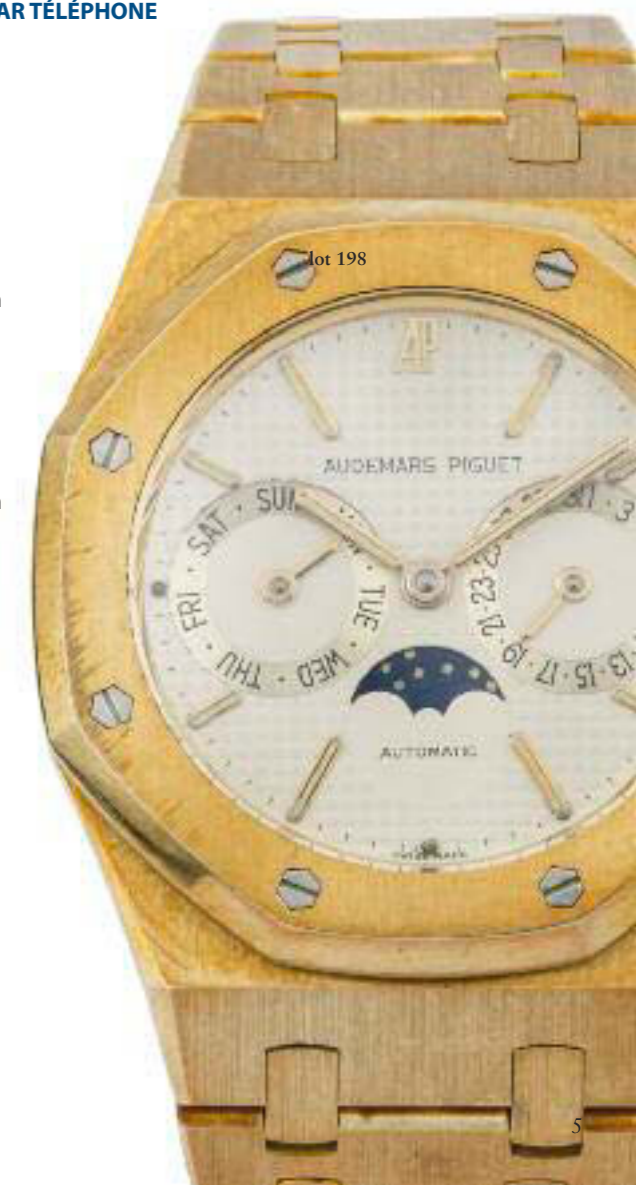
RÉSULTATS DE LA VENTE

AUCTION RESULTS

Ekaterina Gulyakina
+377 99 90 46 26
info.monaco@wannenesgroup.com

lot 614

lot 198



**ARGENTERIE, ICÔNES
ET OBJETS DE L'ART RUSSE**
Tommaso Teardo
t.teardo@wannenesgroup.com



VOITURES CLASSIQUES ET SPORTIVES
Damiano Fianco
d.fianco@wannenesgroup.com



MAÎTRES ANCIENS
Antonio Gesino
a.gesino@wannenesgroup.com



LIVRES ET MANUSCRITS
Riccardo Crippa
r.crippa@wannenesgroup.com



**ART MODERNE
ET CONTEMPORAIN**
Guido Vitali
g.vitali@wannenesgroup.com



VOITURES CLASSIQUES ET SPORTIVES
Nicola Pascal (consulente)
n.pascal@wannenesgroup.com



MAÎTRES DU 19ÈME SIÈCLE
Rosanna Nobilitato
r.nobilitato@wannenesgroup.com



**MONNAIES MÉDAILLES
ET PHILATÉLIE**
Maurizio Piumatti
m.piumatti@wannenesgroup.com



**ART MODERNE
ET CONTEMPORAIN**
Pier Matteo Carnaroli
p.carnaroli@wannenesgroup.com



**DESIGN ET ARTS DÉCORATIFS
DU XXÈ SIÈCLE**
Andrea Schito
a.schito@wannenesgroup.com



**MAÎTRES ANCIENS
MAÎTRES DU 19ÈME SIÈCLE**
Margherita Calabrò
Junior Specialist
m.calabro@wannenesgroup.com



VINS ET SPIRITUEUX
Luca Giordana
l.giordana@wannenesgroup.com



CÉRAMIQUE ET VERRE
Luca Melegati
l.melegati@wannenesgroup.com



**DESIGN ET ARTS DÉCORATIFS
DU XXÈ SIÈCLE**
Giacomo Abate
g.abate@wannenesgroup.com



JOAILLERIE
Benedetta Romanini
b.romanini@wannenesgroup.com



**MONTRES DE POCHE
ET MONTRES À PENDULE**
Giacomo Cora
g.cora@wannenesgroup.com



CÉRAMIQUE ET VERRE
Francesco Marchiaro
Junior specialist
f.marchiaro@wannenesgroup.com



MODE ET ACCESSOIRES DE LUXE
Entela Cela Musolesi
moda@wannenesgroup.com



JOAILLERIE
Teresa Scarlata
t.scarlata@wannenesgroup.com



HORLOGERIE
Michele Rosa
m.rosa@wannenesgroup.com



**MOBILIER, SCULPTURES
ET OBJETS D'ART**
Mauro Tajocchi
m.tajocchi@wannenesgroup.com



ART D'ASIE
Alessandra Pieroni
a.pieroni@wannenesgroup.com



TAPIS ET TISSUS ANCIENS
David Sorgato
d.sorgato@wannenesgroup.com



AFFICHES ANCIENNES
Giuseppe Moraglia
g.moraglia@wannenesgroup.com





lot 608



SESSION UNIQUE
LUNDI 8 JUILLET 2024, 14H00
LOTS 501 - 670

UNIQUE SESSION
MONDAY 8 JULY 2024 AT 2.00PM
LOTS 501 - 670



501.
CARTIER TANK MINI, REF. 2443, IN YELLOW GOLD - From 2001

Reference N° 2443
Serial N° 028236 SM
Year: 2001
Material: 18k Yellow gold
Weight: 20,8g
Dimensions: 14X27mm
Calibre: Manual
Crystal: Mineral
Bracelet: Original leather with 18K gold buckle
Accessories: Box, Documents and guarantee.
€ 2.500 - 4.000

Currently working and in good condition; accompanied by the full set.



503.
PATEK PHILIPPE LADY WATCH IN PINK GOLD - From 1952

Serial N° 621306
Year: 1952
Material: 18k Pink Gold
Weight: 11,1g
Dimensions: 17mm
Calibre: Manual
Crystal: Plexiglass
Bracelet: Leather with 18k gold buckle
€ 700 - 900

Very elegant lady watch from Patek Philippe, currently working.



502.
CHOPARD GENEVE IN YELLOW GOLD AND DIAMONDS - From 1990

Reference N° H 2686
Serial N° 422907
Year: 1990 Circa
Material: 18k yellow gold and diamonds
Weight: 29g
Dimensions: 29mm
Calibre: Quartz
Crystal: Sapphire
Bracelet: Leather with plated buckle
€ 1.500 - 2.500

A very shining diamond dial, in a very good condition watch by Chopard, currently working.



504.
ZENITH LADY BRACELET IN YELLOW GOLD - From 1963

Serial N° 90331015
Year: 1963
Material: 18K Yellow gold
Weight: 59,1g
Dimensions: 18mm
Calibre: Manual
Crystal: Mineral
Bracelet: Integrated in 18k yellow gold
€ 1.200 - 1.800

Very elegant lady bracelet in solid 18k yellow gold; currently working.



505.

EBEL LADY BRACELET WATCH IN YELLOW GOLD - From 1980

Reference N° 878L
Serial N° 354
Year: 1980
Material: 18K Yellow gold
Weight: 21g
Dimensions: 20mm
Calibre: Manual
Crystal: Plexiglass
Bracelet: 18k yellow gold 16,5cm
Accessories: Original tag

Lot sold with no reserve price.
€ 200 - 400

A very fine and well preserved, worn few times, lady bracelet watch by Ebel, currently not working.



507.

VACHERON CONSTANTIN LADY IN 18K WITH GOLD WITH DIAMONDS - from 1967

Serial N° 418107
Year: 1967
Material: 18K White gold and diamonds
Weight: 54g
Dimensions: 20 X 170mm
Calibre: Manual
Crystal: Plexiglass
Bracelet: Integrated in 18k white gold
Accessories: Box
€ 1.600 - 2.600

Very elegant and in good condition accompanied by rare original box Vacheron Constantin, currently working.



506.

VACHERON CONSTANTIN LADY IN 18K YELLOW GOLD AND DIAMONDS - From 1988

Serial N° 538222
Year: 1988
Material: 18k Yellow gold
Weight: 50g
Dimensions: 21 x 172 mm
Calibre: Manual
Crystal: Mineral
Bracelet: Integrated in 18k yellow gold
€ 2.200 - 3.200

Very good condition lady bracelet Vacheron Constantin; currently working.



508.

FRED PARIS BRACELET WATCH IN WHITE GOLD - From 1990

Reference N° FCU23
Year: 1990 CA
Material: 18k white gold
Weight: 115,8g
Dimensions: 162x20mm
Calibre: Manual
Crystal: Mineral
Bracelet: White gold and diamonds
Accessories: Box
€ 8.000 - 9.000

Elegant bracelet watch by Fred Paris; currently working.



509.
ROLEX SOLID BRACELET WATCH IN YELLOW GOLD - From 1950

Serial N° 672680
Year: 1950
Material: 18k yellow gold
Weight: 70g
Dimensions: 20mm
Calibre: Manual
Crystal: Mineral
Bracelet: 18k yellow gold
€ 4.000 - 6.000

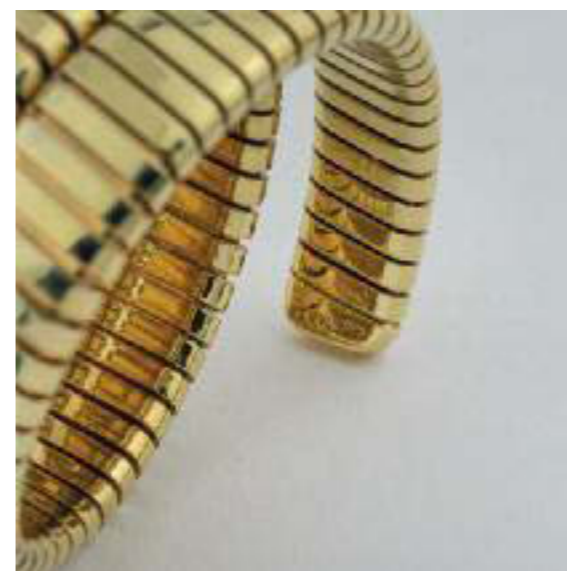
A rare solid gold bracelet watch by Rolex, currently working.



510.
VACHERON CONSTANTIN FOR BULGARI TUBOGAS IN 18K YELLOW GOLD

Reference N° 7151
Serial N° 420066
Year: 1960
Material: 18k yellow gold
Weight: 135,4g
Dimensions: 20mm
Calibre: K1050B
Crystal: Sapphire
Bracelet: 18k yellow gold signed
€ 8.500 - 10.500

This extremely rare watch is one of the very few collaborations of Vacheron Constantin who with Bulgari created this splendid Serpenti Tubogas with octagonal case to make this object even more unique. Currently working.





511.

BAUME & MERCIER IN 18K YELLOW GOLD - From 1965

Reference N° 38643
Serial N° 346340
Year: 1965
Material: 18K yellow gold
Weight: 35,5g
Dimensions: 17mm
Calibre: Manual
Crystal: Plexiglass
Bracelet: Integrated 18K yellow gold 16,3cm
€ 900 - 1.100

Very elegant bracelet lady watch by Baume et Mercier, currently working.



513.

LOT OF 3 LADY WATCHES IN 18K GOLD - From 1970

Year: 1970
Material: 18k White and yellow gold
Weight: 63g
Dimensions: 16 + 14 + 14 mm
Calibre: Manual
Crystal: Plexiglass
Bracelet: 18k White and yellow gold

Lot sold with no reserve price.
€ 200 - 400

Lot of 3 lady bracelet watch in gold from 1970, currently working.



512.

BAUME & MERCIER IN WHITE GOLD AND DIAMONDS - From 1955

Reference N° 27816
Serial N° 38368
Year: 1955
Material: 18k white gold and diamonds
Weight: 26g
Dimensions: 16mm
Calibre: Manual
Crystal: Plexiglass
Bracelet: 18k white gold 16cm
€ 800 - 1.000

Very elegant bracelet lady watch by Baume et Mercier, currently working.



514.

JAEGER-LECOULTRE REVERSO REF. 141.250.8, IN STAINLESS STEEL - From 1995

Reference N° 141.250.8
Serial N° 1682771
Year: 1995
Material: Stainless steel
Dimensions: 23 x 38mm
Calibre: Manual
Crystal: Sapphire
Bracelet: Leather with steel signed buckle
€ 700 - 900

One of most iconic watches by Jaeger-LeCoultre, the Reverso, made especially for the Polo players in order to rotate the case and preserve the glass and the dial; currently working.



515.

JAEGER-LECOULTRE REVERSO, REF 265.3.86, IN 18K WHITE GOLD EMERALDS AND DIAMONDS - From 1998

Reference N° 265.3.86
Serial N° 1827306
Year: 1998
Material: 18K white gold with diamonds and emeralds
Weight: 46g
Dimensions: 20x32mm
Calibre: Manual
Crystal: Crystal sapphire
Bracelet: leather with 18K white gold buckle
Accessories: Original box and guarantee
€ 5.500 - 7.500

A very rare configuration of the iconic Reverso by Jaeger-LeCoultre, decorated with beautiful diamonds and emeralds, on the back there is a personalized engraving enriched with diamonds with the initials "M L". Currently working.



lot 515



516.
ROLEX DATEJUST, REF. 69088, IN YELLOW GOLD DIAMONDS AND SAPPHIRES
- From 1986

Reference N° 69088
Serial N° 9258702
Year: 1986
Material: 18k Yellow gold
Weight: 71,5g
Dimensions: 26mm
Calibre: Automatic cal. 2135
Crystal: Sapphire
Bracelet: President 18k Yellow gold
€ 7.500 - 9.500

In extremely good condition a very elegant and original factory diamonds and sapphire bezel made by Rolex president Datejust; currently working.



517.
ROLEX DATEJUST REF. 6827, IN YELLOW GOLD - From 1977

Reference N° 6827
Serial N° 5439709
Year: 1977
Material: 18k Yellow gold
Weight: 85g
Dimensions: 30mm
Calibre: Automatic
Crystal: Plexiglass
Bracelet: 18k Yellow gold
€ 4.000 - 6.000

An 18k yellow gold with rare grey dial in very good conditions Datejust by Rolex; currently working.





518.

ROLEX SUBMARINER, REF 16803, IN STEEL AND GOLD - From 1986

Reference N° 16803
Serial N° 9347581
Year: 1986
Material: Steel and gold
Dimensions: 40mm
Calibre: Automatic cal.3035
Crystal: Sapphire
Bracelet: Steel and gold
Accessories: Box, guarantee and accessories.
€ 7.500 - 9.500

Classic steel and gold blue bezel Submariner; with a splendid patinated ghost dial; currently working.





519.
ROLEX BRACELET IN 18K YELLOW GOLD - From 70s

Serial N° 2 72
Material: 18k yellow
Weight: 56g
Dimensions: 20mm
Finals: 76

lot sold with no reserve price.
€ 500 - 1.000

A solid yellow gold 20mm finals bracelet by Rolex



521.
ROLEX DAYTONA BEZEL MK5 IN YELLOW GOLD

Reference N° 116528
Material: 18k yellow gold
Dimensions: 40mm
€ 1.000 - 1.500

A very good condition; probably never installed MK5 bezel for Rolex Daytona.



520.
ROLEX BRACELET IN STAINLESS STEEL - From 1970

Reference N° 7835 19
Year: 1970
Material: Stainless steel
Bracelet: 19mm
Finals: 271/357
€ 1.000 - 2.000

Stainless steel bracelet 19mm finals for Rolex



522.
ROLEX DAYTONA BEZEL MK5 IN STAINLESS STEEL

Reference N° 116520
Material: Stainless steel
Dimensions: 40mm
€ 1.000 - 1.400

A very good condition; probably never installed MK5 bezel for Rolex Daytona.



523.
ROLEX DAYTONA DIAL CHAMPAGNE MK3 WITH GOLD INDEX

Reference N° 16523 / 16528
Material: Champagne and gold index
€ 500 - 600

A very good condition; probably never installed; dial for Rolex Daytona.



525.
ROLEX DIAL FOR ROLEX DAYTONA REF. 16520 - From 1999

Reference N° 16520
Year: 1999
Calibre: 4030
€ 1.000 - 1.500

A patinated stardust effect dial for Rolex Daytona.



524.
ROLEX DAYTONA DIAL IN MOP (MOTHER OF PEARL) AND GOLD INDEX

Reference N° 116523 / 116518 / 116528
Material: Mother of pearl and gold
€ 2.200 - 2.600

A very good condition; probably never installed; dial for Rolex Daytona.



526.
ROLEX DATE DISK FOR CAL.1525 - From 1963 to 1977

Year: from 1963 to 1977
Calibre: 1525
Accessories: Original plastic Rolex box
€ 800 - 1.000

An Arabic number for Cal 1525 by Rolex.



527.

ROLEX DAYTONA REF. 16520 IN STAINLESS STEEL - From 1993

Reference N° 16520
Serial N° S760496
Year: 1993
Material: Stainless steel
Dimensions: 40mm
Calibre: Automatic
Crystal: Sapphire
Bracelet: Stainless steel
€ 16.000 - 21.000

A classic and iconic Daytona stainless steel powered by the famous calibre from Zenith, in good conditions, currently working.





528.

ROLEX DAYTONA REF. 16523, IN STEEL AND GOLD - From 1989

Reference N° 16523
Serial N° L718690
Year: 1989
Material: Stainless steel and gold
Dimensions: 40mm
Calibre: Automatic
Crystal: Sapphire
Bracelet: Stainless steel and gold
Accessories: Original wooden box
€ 14.500 - 19.500

A very well preserved steel and gold Rolex Daytona, accompanied by the original box and currently working.





529.
ZENITH EL PRIMEO RAINBOW, STAINLESS STEEL AND GOLD - From 1998

Reference N° 58-0360-400
Year: 1998 circa
Material: Stainless steel and 14k yellow gold
Dimensions: 40mm
Calibre: Automatic cal.400
Crystal: Sapphire
Bracelet: Stainless steel and 14k yellow gold
Accessories: Box
€ 1.800 - 2.800

Steel and gold chronograph powered by the famous El Primero by Zenith, in good working conditions.



530.
TAG HEUER CARRERA 16 IN STEEL AND GOLD - From 1992

Serial N° RRD2148
Year: 1992
Material: Steel and gold
Dimensions: 41mm
Calibre: Automatic cal.16
Crystal: Sapphire
Bracelet: Steel and gold
Accessories: Box
€ 1.500 - 1.800

A very good conditions Tag Heuer Carrera actually working.





531.

EBEL VOYAGER WORLDTIME IN STEEL AND GOLD - From 1995

Reference N° 1124913
Serial N° 34607526
Year: 1995 circa
Material: Steel and gold
Dimensions: 38mm
Calibre: Automatic
Crystal: Sapphire
Bracelet: Steel and gold
Accessories: Box
€ 700 - 800

A classic design from Ebel, Worldtime Voyager, currently working.



532.

ROLEX OYSTER PERPETUAL DATE, REF. 6917, IN STEEL AND GOLD - From 1971

Reference N° 6917
Serial N° 3297175
Year: 1971
Material: Steel and gold
Dimensions: 25mm
Calibre: Automatic cal. 2030
Crystal: Plexiglass
Bracelet: Oyster Steel and gold
Accessories: Box
€ 2.000 - 3.000

A well preserved lady Date by Rolex in stainless steel and gold, accompanied by original red box, currently working



533.

ROLEX OYSTER PERPETUAL, REF. 6718, IN STAINLESS STEEL AND GOLD - From 1975

Reference N° 6718
Serial N° 3880779
Year: 1975
Material: Stainless steel and gold
Dimensions: 25mm
Calibre: Automatic
Crystal: Plexiglass
Bracelet: Stainless steel and gold
€ 2.000 - 3.000

A well preserved lady Oyster Perpetual by Rolex in stainless steel and gold, currently working.



534.

ROLEX OYSTERQUARTZ DATEJUST, REF. 17013, IN STEEL AND GOLD - From 1981

Reference N° 17013

Serial N° 6296430

Year: 1981

Material: Stainless steel and gold

Dimensions: 34mm

Calibre: Quartz cal.5035

Crystal: Sapphire

Bracelet: Stainless steel and gold

Accessories: Box, warranty and passport document holder in leather signed Rolex

€ 3.000 - 5.000

Directly from 80s a very good condition example of oyster quartz, battery need to be replaced.





535.

ROLEX DATEJUST STELLA, REF. 16018, IN YELLOW GOLD - From 1985

Reference N° 16018
Serial N° 8232934
Year: 1985
Material: 18k yellow gold
Weight: 130g
Dimensions: 35mm
Calibre: Automatic
Crystal: Sapphire
Bracelet: 18K yellow gold
Accessories: original guarantee from Swiss and service by Rolex dated 09/11/2023
€ 17.000 - 22.000

An extraordinary Stella white dial with gold graphics Datejust by Rolex, in very good serviced conditions, currently working.





536.
BAUME & MERCIER CHRONOGRAPH IN YELLOW GOLD - From 1978

Reference N° 86101 099
Serial N° 1454574
Year: 1978
Material: 18k yellow gold
Weight: 91g
Dimensions: 34mm
Calibre: Manual
Crystal: Plexiglass
Bracelet: 18k yellow gold non signed
€ 2.500 - 3.500

A very fine and elegant 18k yellow gold vintage chrono by Baume et Mercier, currently working.



538.
PIAGET POLO IN YELLOW GOLD - From 1980

Reference N° 791 C 701
Serial N° 383363
Year: 1980
Material: 18k yellow gold
Weight: 116g
Dimensions: 30mm
Calibre: Automatic
Crystal: Sapphire
Bracelet: 18k yellow gold
€ 6.000 - 9.000

An iconic and extremely researched Polo with black dial by Piaget, in very well preserved conditions; currently working.



537.
OMEGA CONSTELLATION LADY IN 18K YELLOW GOLD - From 1985

Reference N° 1382
Year: 1985
Material: 18K yellow gold
Weight: 68g
Dimensions: 25mm
Calibre: Quartz
Crystal: Sapphire
Bracelet: 18K yellow gold
€ 2.200 - 2.600

An iconic Omega Constellation, lady size, currently working.



539.
PATEK PHILIPPE TWENTY4, RÉF. 4910/11R, EN OR ROSE - Vers 2010

Reference N° 4910/11R
Serial N° 1663816/4123137
Year: 2010 circa
Material: 18k Pink Gold
Weight: 123g
Dimensions: 24 x 30mm
Calibre: Quartz
Crystal: Sapphire
Bracelet: 18K Pink Gold
Accessories: Original Patek service box
€ 13.000 - 18.000

Elegant and linear design with magnificent color contrast of the brown dial with the recently serviced Lady Patek Philippe in rose gold.



540.

PATEK PHILIPPE "TOP HAT" REF. 1450, IN YELLOW GOLD - From 1942

Reference N° 1450
Serial N° 639101
Year: 1942
Material: 18k yellow gold
Weight: 36,7g
Dimensions: 37 x 25mm
Calibre: Manual
Crystal: Mineral
Bracelet: Leather with steel buckle
€ 4.500 - 6.500

This curious Patek Philippe is known as "Top Hat" due to the shape of its case, or even "Cinesino", however this splendid model dating back to the 40s perfectly incorporates the philosophy of the time, a very rare model to find in original conditions, this one with a lightly patinated dial is a splendid example.





541.

JAEGER LE COULTRE ETRIER IN YELLOW GOLD - From 1960

Reference N° A
Serial N° 611477
Year: 1960 circa
Material: 18k yellow gold
Weight: 20,4g
Dimensions: 34 x 23mm
Calibre: Manual
Crystal: Plexiglass
Bracelet: Leather with steel buckle
€ 700 - 800

A very classic and iconic Etrier by Jaeger LeCoultre, currently not working.



543.

LECOULTRE MONOBLOCK IN 14K YELLOW GOLD - From 1955

Year: 1955
Material: 14K Yellow gold
Weight: 23g
Dimensions: 32mm
Calibre: Manual
Crystal: Plexiglass
Bracelet: Leather with steel buckle

Lot sold with no reserve price.
€ 200 - 400

Elegant and unusual lugs dress watch from LeCoultre; Currently working.



542.

JEAN PERRET GENEVE ETRIER IN YELLOW GOLD - From 1960

Serial N° 070361
Year: 1960 circa
Material: 18k yellow gold
Weight: 15,4g
Dimensions: 31 x 24mm
Calibre: Manual
Crystal: Plexiglass
Bracelet: Leather with steel buckle
€ 300 - 400

A gold classic Etrier by Jean Perret Genève, currently not working



544.

VACHERON CONSTANTIN MONTRE EN OR JAUNE - Vers 1925

Serial N° 259074
Year: 1925 circa
Material: 18k Yellow gold
Weight: 27g
Dimensions: 28mm
Calibre: Manual
Crystal: Plexiglass
Bracelet: Leather with steel buckle
€ 1.300 - 1.600

Elegant, and rare pusher at 12, Vacheron Constantin wristwatch, currently working.



545.

PATEK PHILIPPE CALATRAVA, REF. 5196R-001, IN YELLOW GOLD - From 2005

Reference N° 5196R-001

Serial N° 4389183

Year: 2005

Material: 18k Pink gold

Weight: 59g

Dimensions: 37mm

Calibre: Manual cal.215

Crystal: Sapphire

Bracelet: Original leather with 18k pink gold Patek Philippe buckle

€ 4.000 - 8.000

A very elegant and in excellent condition Patek Philippe Calatrava; currently working.





546.

PATEK PHILIPPE X HAUSMANN CALATRAVA IN YELLOW GOLD FROM 1955

Serial N° 295003

Year: 1955

Material: 18K Yellow gold

Weight: 36g

Dimensions: 30mm

Calibre: Manual

Crystal: Plexiglass

Bracelet: Leather with 18k yellow gold signed buckle

€ 3.500 - 4.500

A classic and elegant dress watch by Patek Philippe and Hausmann in well preserved condition, currently working.





547.

PATEK PHILIPPE "KING SIZE / JUMBO" REF 2481, IN YELLOW GOLD - From 1953

Reference N° 2481
Serial N° 681899
Year: 1953
Material: 18K Yellow gold
Weight: 46g
Dimensions: 36,8mm
Calibre: Manual cal. 27SC
Crystal: Plexiglass
Bracelet: Leather with steel buckle
€ 8.000 - 12.000

Designed by Bernard Dubois, the Patek Philippe reference 2481 is one of most iconic time-only watches of the mid-20th century. It features elongated claw lugs and a concave bezel making it appear on the wrist even larger than its 36.8mm diameter, hence its nickname "King Size" or even Jumbo. The reference 2481 is powered by the legendary caliber 27SC, considered among the best center seconds wristwatch movements of its era. This very rare reference features a splendid dial with Roman numerals, a very rare configuration, which Patek Philippe has also used in some variants of this reference with enameled dials. A real gem in magnificent condition, currently working.





548.
BLANCPAIN VILLERET CHRONO RATTRAPANTE IN YELLOW GOLD - From 1990

Serial N° 079
Year: 1990 circa
Material: 18k yellow gold
Weight: 67g
Dimensions: 33mm
Calibre: Automatic
Crystal: Sapphire
Bracelet: Leather with 18k yellow gold buckle
Accessories: Box and warranty
€ 4.200 - 5.200

A complicated chronograph rattrapante from Blancpain actually working and in very good condition.



549.
BLANCPAIN VILLERET CHRONOGRAPH IN STAINLESS STEEL - From 1990

Serial N° 43
Year: 1990
Material: Stainless steel
Dimensions: 33mm
Calibre: Automatic cal.1185
Crystal: Sapphire
Bracelet: Leather with steel signed buckle

Lot sold with no reserve price.
€ 400 - 800

Classic and iconic watch from Blancpain, currently working.





550.

ROLEX ANTIMAGNETIC, REF. 2508, IN YELLOW GOLD - From 1932

Reference N° 2508
Serial N° 44952
Year: 1938
Material: 18k yellow gold
Weight: 48,8g
Dimensions: 36mm
Calibre: Manual
Crystal: Plexiglass
Bracelet: Original leather
Accessories: Invoice from 1995 auction
€ 18.000 - 25.000

One of the firsts chronograph made by Rolex was the reference 2508, launched in mid 30s, this model with a splendid colored dial, probably restored, is preserved very well; currently working. Provenance private collection from 1995 Auction by Meeting Art.





551.

BREGUET TYPE 20 MILITAIRE, IN STAINLESS STEEL - From 1955

Reference N° 5101/54
Serial N° 7483
Year: 1955 circa
Material: Stainless Steel
Dimensions: 38mm
Calibre: Manual
Crystal: Plexiglas
Bracelet: Leather with steel buckle
€ 11.000 - 15.000

Breguet Type 20 watches were supplied to French Air Force pilots between 1955 and 1959.

On the case back, in addition to the serial numbers and the name of the iconic Type 20 model, various dates were shown corresponding to the deadlines for the revisions that the timepiece has received throughout its history which were carried out regularly by the air force itself.





552.
UNIVERSAL UNI-COMPAX CHRONO IN YELLOW GOLD - From 1950

Year: 1950
Material: 18k Yellow gold
Weight: 43g
Dimensions: 37mm
Calibre: cal. 285
Crystal: Plexiglass
Bracelet: Leather with steel buckle
€ 1.200 - 1.800

An extra size gold chronograph by Universal Genève, with original patinated dial, currently working.



553.
OMEGA DOCTOR CHRONO, IN YELLOW GOLD - From 1950

Serial N° 172717
Year: 1950
Material: 18K yellow gold
Weight: 38g
Dimensions: 35mm
Calibre: Manual
Crystal: Plexiglass
Bracelet: Leather with steel buckle
€ 1.000 - 2.000

Very rare doctor watch by Omega, very well preserved and currently working.





554.

PAUL PICOT TECHNICUM RATTRAPPANTE, REF. 888.102, IN YELLOW GOLD - From 1993

Reference N° 888.102
Serial N° 030
Year: 1993
Material: 18k yellow gold
Weight: 106g
Dimensions: 40mm
Calibre: Automatic
Crystal: Sapphire
Bracelet: Leather with steel buckle
Accessories: Original box, warranty and COSC
€ 4.000 - 5.000

A very special Paul Picot chronograph rattrapante triple calendar in gold, complete of the full set, currently working.





555.

JAEGER-LECOULTRE GEOGRAPHIQUE, REF. 0199 - MGM, IN YELLOW GOLD - From 1993

Reference N° 0199 - MGM

Serial N° 169140922

Year: 1993

Material: 18k yellow gold

Weight: 72g

Dimensions: 37mm

Calibre: Automatic

Crystal: Sapphire

Bracelet: Leather with original gold buckle

Accessories: Original box and warranty

€ 4.000 - 6.000

A rare complicated world time Geographique in yellow gold Jaeger-LeCoultre, complete of the full set, in very good condition, currently working.





556.
BAUME & MERCIER CHRONOGRAPH IN YELLOW GOLD - From 1990

Reference N° 8603
Serial N° 1724100
Year: 1990
Material: 18K Yellow gold
Weight: 71g
Dimensions: 36mm
Calibre: Automatic
Crystal: Sapphire
Bracelet: Leather with steel signed buckle
Accessories: With box
€ 1.500 - 2.000

Classic and elegant 18k yellow gold Baume & Mercier chronograph; currently working.



558.
BLANCPAIN LEMAN TRIPLE DATE MOONPHASE IN YELLOW GOLD

Reference N° 65951418
Serial N° 2890
Year: 1992
Material: 18K yellow gold
Weight: 54g
Dimensions: 33mm
Calibre: Automatic
Crystal: Sapphire
Bracelet: Leather with 18k yellow gold buckle
Accessories: Box and warranty
€ 4.200 - 5.000

A classic Triple date Moonphase Blancpain worn few times, currently working.



557.
PHILIP WATCH TRI-COMPAX MOONPHASE IN YELLOW GOLD - From 1980

Reference N° 8882
Serial N° 468245
Year: 1980 circa
Material: 18K yellow gold
Weight: 41g
Dimensions: 32mm
Calibre: Manual
Crystal: Plexiglass
Bracelet: Leather with steel buckle
€ 1.100 - 1.300

Very unusual and classic Tri-Compax Moonphase from Philip Watch; currently working.





559.

IWC PORTOFINO PERPETUAL CALENDAR IN YELLOW GOLD - From 1990

Reference N° 41917620
Serial N° 2471374
Year: 1990
Material: 18k yellow gold
Weight: 60,6g
Dimensions: 35mm
Calibre: Automatic
Crystal: Mineral
Bracelet: Leather with 18k yellow gold buckle
Accessories: Box and warranty
€ 6.500 - 9.500

A rare and unusual perpetual calendar Portofino by IWC, well preserved and serviced by IWC in 2017, accompanied by box and warranty.





560.

FRANCK MULLER CHRONO MASTER OF COMPLICATION N. 48 IN YELLOW GOLD
- From 1990

Reference N° 5850 CC AT
Serial N° 48
Year: 1990
Material: 18K Yellow gold
Weight: 84,2g
Dimensions: 31 x 44mm
Calibre: Automatic
Crystal: Mineral
Bracelet: Original leather with yellow gold buckle
€ 5.000 - 7.000

A classic and well preserved chronograph by Franck Muller; currently working.





561.

FRANCK MULLER MASTER OF COMPLICATION REF. 2000 CC MC, IN YELLOW GOLD - From 1990

Reference N° 000 CC MC

Serial N° 04

Year: 1990

Material: 18k yellow gold

Weight: 100g

Dimensions: 39mm

Calibre: Manual

Crystal: Sapphire

Bracelet: Ray leather with original gold buckle

Accessories: Original box and guarantee of service by Franck Muller dated 2011
€ 14.000 - 19.000

A very rare and limited edition chronograph by Franck Muller, complete of box and service, currently working.





562.
FRANCK MULLER CASABLANCA 10TH ANNIVERSARY IN STAINLESS STEEL - From 2006

Reference N° 8880C
Serial N° 684
Year: 2006
Material: Stainless steel
Dimensions: 39x55mm
Calibre: Automatic
Crystal: Plexiglass
Bracelet: Leather with steel original buckle
Accessories: Original leather box
€ 3.000 - 4.000

Classic design by Franck Muller, Casablanca celebrating the 10th anniversary, Currently working.



563.
IWC PORSCHE DESIGN COMPASS, IN PVD - From 1975

Serial N° 2249277
Year: 1975 circa
Material: Stainless steel PVD plated
Dimensions: 39mm
Calibre: Automatic
Crystal: Sapphire
Bracelet: Cauttù
€ 1.500 - 2.000

An iconic model by IWC and Porsche Design, hiding a very useful compass and a mirror opening the case with the pushers at 6. Very well preserved and currently working.





564.
IWC PORTUGIESER CHRONO RATTRAPANTE, REF. 3712-002, IN STAINLESS STEEL - From 1997

Reference N° 3712-002
Serial N° 2675194
Year: 1997
Material: Stainless steel
Dimensions: 40mm
Calibre: Manual
Crystal: Sapphire
Bracelet: Leather with original buckle
Accessories: Box and guarantee
€ 5.500 - 6.500

An iconic and very elegant chronograph rattrapante by IWC, in very good condition, accompanied by the full set and currently working.



565.
IWC PORTUGIESER CHRONOGRAPH IN YELLOW GOLD - From 2010

Serial N° 3339329
Year: 2010
Material: 18k yellow gold
Weight: 108g
Dimensions: 40mm
Calibre: Automatic
Crystal: Sapphire
Bracelet: Leather with yellow gold buckle
Accessories: Box and guarantee
€ 8.000 - 9.000

An iconic and in good condition chrono Portuguese by IWC, currently working.





566.
IWC PORTOFINO IN YELLOW GOLD - From 1989

Reference N° 3731
Serial N° 2417945
Year: 1989
Material: 18k yellow gold
Weight: 48g
Dimensions: 35mm
Calibre: Quartz
Crystal: Sapphire
Bracelet: Original plated buckle
Accessories: Box + Warrant
€ 1.800 - 2.300

A very iconic Portofino chronograph by IWC, in very good conditions and currently working.



568.
ZENITH STELLINA CHRONO IN YELLOW GOLD - From 1960

Serial N° 893D538
Year: 1970
Material: 18k yellow gold
Weight: 46g
Dimensions: 34mm
Calibre: Manual
Crystal: Plexiglass
Bracelet: Leather with steel buckle
€ 1.500 - 2.500

A classic chronograph by Zenith in yellow gold, well preserved and currently working.



567.
CHRONOGRAPHE SUISSE IN YELLOW GOLD - From 1960

Serial N° 1197
Year: 1960
Material: 18K Yellow gold
Weight: 41g
Dimensions: 37mm
Calibre: Manual
Crystal: Plexiglass
Bracelet: Lizard leather

Lot sold with no reserve price.
€ 200 - 500

Very well preserved Chrono Suisse, Currently working



569.
TAVANNES CHRONOGRAPH IN YELLOW GOLD - From 1965

Serial N° 407420
Year: 1965
Material: 18k Rose gold
Weight: 36g
Dimensions: 34mm
Calibre: Manual
Crystal: Plexiglass
Bracelet: Lizard leather

Lot sold with no reserve price.
€ 200 - 500

A very well preserved chronograph by Tavannes in pink gold, currently working.



570.

PATEK PHILIPPE CHRONOGRAPH, REF 130, 18K YELLOW GOLD - From 1950

Reference N° 130
Serial N° 699997
Year: 1950
Material: 18k yellow gold
Weight: 46g
Dimensions: 33mm
Calibre: Manual
Crystal: Plexiglass
Bracelet: Leather with original 18k yellow gold buckle
Accessories: Original box
€ 40.000 - 50.000

The reference 130 was first launched in 1934 and remained in production until at least 1964. This chronograph perfectly captures the spirit of traditional watchmaking and represents the elegance and precision of Patek Philippe. Its case derives from the Bauhaus-designed reference 96 and was produced in many variations and metals. It is considered one of the most iconic and sought-after models made by Patek Philippe. This model, in excellent case and mechanical condition, with a slightly patinated and probably restored dial, is a splendid example of a Patek Philippe chronograph with at least 70 years of history.





571.

LONGINES FLYBACK CHRONOGRAPH REF. 7414, IN PINK GOLD - From 1968

Reference N° 7414
Serial N° 15880
Year: 1968
Material: 18K pink gold
Weight: 39g
Dimensions: 35mm
Calibre: Manual cal. 30CH
Crystal: Plexiglass
Bracelet: Leather with Longines steel buckle
Accessories: Extract from the archives
€ 4.000 - 6.000

An extremely well preserved and rare flyback chronograph reference 7414 by Longines; currently working.





572.

LONGINES CHRONO ANTIMAGNETIC, REF 3502, IN STAINLESS STEEL - From 1939

Reference N° 3502
Serial N° 5'551'531
Year: 1939
Material: Stainless steel
Dimensions: 34mm
Calibre: Manual cal. 13ZN
Crystal: Plexiglass
Bracelet: Stainless steel elastic
Accessories: With extract from the archives
€ 1.500 - 2.500

A rare chronograph by Longines accompanied by the extract from the archives, the watch needs to be serviced. Currently not working.





573.
HEUER CHRONOGRAPH, REF. CS 3111, IN STAINLESS STEEL - From 1974

Reference N° CS 3111
Serial N° 7347
Year: 1974
Material: Stainless steel
Dimensions: 35mm
Calibre: Manual cal.1873
Crystal: Plexiglass
Bracelet: Original with stainless steel signed buckle
€ 2.000 - 2.400

Classic sport chronograph by Heuer in stainless steel; currently working



574.
BREITLING CHRONO, REF. 81950, IN STAINLESS STEEL AND GOLD - From 1990

Reference N° 81950
Serial N° 13047
Year: 1990
Material: Stainless steel and gold
Dimensions: 39mm
Calibre: Automatic
Crystal: Sapphire
Bracelet: Leather with steel signed buckle
Accessories: Warranty and documents
€ 700 - 900

A well preserved with nice grey dial Breitling in stainless steel and gold accompanied by documents and currently working.





575.
BREITLING CHRONOGRAPH IN STAINLESS STEEL - From 1990

Reference N° A13370
Serial N° 2354489
Year: 1990
Material: Stainless steel
Dimensions: 49mm
Calibre: Automatic
Crystal: Sapphire
Bracelet: Stainless steel
Accessories: Box and warranty
€ 2.000 - 3.000

Extrasize pilot chronograph by Breitling in good working conditions.



576.
BREITLING SUPER OCEAN LIMITED EDITION 017/320 IN STAINLESS STEEL - From 2017

Reference N° 017/320
Serial N° 0032881
Year: 2017 circa
Material: Stainless steel
Dimensions: 46mm
Calibre: Automatic
Crystal: Sapphire
Bracelet: Caucciù with original stainless steel déployant
Accessories: Box and guarantee
€ 1.300 - 2.300

Currently working and in good conditions; accompanied by the full set





577.

HUBLOT MDM PROFESSIONAL 300M IN YELLOW GOLD - From 1993 circa

Reference N° 1550 127
Serial N° 203406
Year: 1993 circa
Material: 18k yellow gold
Weight: 91g
Dimensions: 36mm
Calibre: Automatic
Crystal: Sapphire
Bracelet: Caucciù with 18k double deployant buckle
€ 3.500 - 4.500

Classic Hublot from 90s in very good conditions; currently working.



578.

HUBLOT BIG BANG CHRONO, REF. 301 W, IN PINK GOLD AND TITANIUM - From 2010

Reference N° 301 W
Serial N° 643326
Year: 2010
Material: 18k pink gold and titanium
Weight: 185,5g
Dimensions: 48mm
Calibre: Automatic
Crystal: Sapphire
Bracelet: Rubber with 18k pink gold deployant
€ 9.000 - 13.000

Sport chronograph in pink gold and titanium by Hublot; currently working.



lot 578



579.

HUBLOT BIG BANG CHRONO "AYRTON SENNA", IN STAINLESS STEEL PVD - From 2001

Reference N° CT2114
Serial N° 765060 079/500
Year: 2001
Material: Stainless steel; PVD plated
Dimensions: 44mm
Calibre: Automatic
Crystal: Sapphire
Bracelet: caucciù with PVD plated deployant
Accessories: box and guarantee
€ 8.000 - 9.000

A sport chronograph black PVD plated Big Bang dedicated to Ayrton Senna by Hublot; currently working.





580.

AUDEMARS PIGUET ROYAL OAK OFFSHORE "JARNO TRULLI" LIMITED EDITION 197/500, IN CARBON TITANIUM - From 2011

Reference N° 26202
Serial N° H17847
Year: 2011
Material: Carbon titanium
Weight: 104,9g
Dimensions: 46 x 50 mm
Calibre: Automatic
Crystal: Sapphire
Bracelet: Caucciù with deployant
Accessories: Box
€ 18.000 - 24.000

Only 500 examples of this Royal Oak OffShore were made to celebrate the career of the famous Formula 1 driver. This is one of the most unique Offshores ever designed, with a forged carbon case, cermet (ceramic) bezel and titanium pushers wrapped around a galvanic anthracite dial featuring the Mega Tapisserie motif. In very good conditions; currently working.





581.
UNIVERSAL GENEVE X SENNA, IN CARBON STEEL - From 2000

Reference N° 962,320
Serial N° 42300652
Year: 2000 circa
Material: Carbon steel
Dimensions: 37mm
Calibre: Automatic
Crystal: Sapphire
Bracelet: Original rubber with deployant
Accessories: box and guarantee
€ 800 - 1.000

Unusual limited edition watch dedicated to Ayrton Senna made by Universal Genève; currently working.



583.
TAG HEUER CHRONO "AYRTON SENNA" IN STAINLESS STEEL - From 2000 circa

Reference N° CK1111
Serial N° EE4530
Year: 2000 circa
Material: Stainless steel
Dimensions: 40mm
Calibre: Quartz
Crystal: Sapphire
Bracelet: Stainless steel
Accessories: Original box
€ 800 - 1.000

Chronograph dedicated to Ayrton Senna by Tag Heuer; actually not working; battery needs to be replaced (the functioning of the quartz movements is not guaranteed as the conditions of sale, assistance or repair may be required).



582.
UNIVERSAL GENEVE X SENNA, IN CARBON STEEL - From 2001

Reference N° 4.195.363
Serial N° 998.310
Year: 2001
Material: Carbon steel
Dimensions: 41 x 44mm
Calibre: Automatic
Crystal: Sapphire
Bracelet: Leather with deployant buckle
Accessories: box and guarantee
€ 1.000 - 1.800

Unusual chronograph dedicated to Ayrton Senna made by Universal Genève, limited edition; currently working.



584.
CARTIER CHRONOSCAPH 21, REF 2424, IN STAINLESS STEEL - From 2000

Reference N° 2424
Serial N° 800**2LX
Year: 2000
Material: Stainless steel
Dimensions: 38mm
Calibre: Quartz
Crystal: Sapphire
Bracelet: Caucciù and steel with deployant buckle signed Cartier
€ 1.200 - 2.200

An unusual chronograph in stainless steel by Cartier; Actually not working; battery needs to be replaced (the functioning of the quartz movements is not guaranteed as the conditions of sale, assistance or repair may be required).



585.

ZENITH EL PRIMERO "WORLD STRATOS MEETING - BIELLA" 11/40, IN STAINLESS STEEL - From 2016

Reference N° 02.20417.4061

Serial N° 327421 11/40

Year: 2016

Material: Stainless steel

Dimensions: 42mm

Calibre: Automatic

Crystal: Sapphire

Bracelet: Leather with original steel buckle

Accessories: Presentation box and guarantee

€ 12.000 - 14.000

This extraordinary Zenith El Primero was produced especially for the World Lancia Stratos meeting the 24-26 June 2016 in Biella, Italy.

"In tribute to the fabulous destiny of a cult car, the El Primero Chronomaster World Stratos Meeting boasts a powerful engine and streamlined bodywork. The watch is limited to 40 pieces worldwide. This paragon of performance and reliability beats at the brisk pace of 36,000 vibrations/hour, enabling it to provide a tenth-of-a-second display. The silver-toned dial, adorned with a dedicated medallion, is punctuated by luminescent faceted hour-markers, swept over by equally luminescent faceted hours and minutes hands, as well as a red central chronograph hand. Its emblematic 11 o'clock opening reveals the engine throbbing inside: El Primero Calibre 4061, chronometer-certified by the COSC and a worthy descendant of the world's most precise series-made chronograph developed by Zenith in 1969.

Powering central hours and minutes functions, along with chronograph and tachymeter functions, while enjoying 50 hours of autonomy, this high-frequency mechanism is housed in a 42 mm-diameter stainless steel case topped with a domed sapphire crystal and flanked by a ratcheted crown as well as red and green-accented pushpieces.

Oozing Italian style sporting elegance, the El Primero Chronomaster World Stratos Meeting is equipped with a black alligator strap with red topstitching, secured by a triple folding clasp. In an ultimate reference to the mean machine that inspired it, the timepiece is delivered with a miniature model of the car in a white lacquered wooden presentation box adorned with the Italian flag and featuring a lining reminiscent of the upholstery of the original Lancia Stratos. A collectors model already!" www.worldstratosmeeting.com





586.

ROLEX EXPLORER LIMITED EDITION "NAPOLI - FOR EDOARDO DE LAURENTIIS FINALE COPPA ITALIA 2012" IN STAINLESS STEEL - 2012

Reference N° 214270
Serial N° G394882
Year: 2012
Material: Stainless steel
Dimensions: 39mm
Calibre: Automatic cal. 3132
Crystal: Sapphire
Bracelet: Oyster stainless steel
Accessories: Letter by Mr. Edoardo De Laurentiis
€ 10.000 - 20.000

This splendid Rolex Explorer is the tribute of the Società Sportiva Calcio Napoli for the victory of the Italian Cup (Coppa Italia) the 20 May 2012, the engravings on the back also show the name of Edoardo De Laurentiis, vice president of Napoli. Confirming the object is a transfer letter written by De Laurentiis himself, whose handwriting we have had authenticated. A rare object and tribute to the sporting history of Italian football.





587.
OMEGA BROAD ARROW OLYMPIC LIMITED EDITION N. 113, IN YELLOW GOLD
- From 2013

Reference N° 178 0215
Serial N° 84006413
Year: 2013
Material: 18k Pink gold
Weight: 170,54g
Dimensions: 44mm
Calibre: Automatic Co-Axial
Crystal: Sapphire
Bracelet: Original leather with 18k pink gold deployant
Accessories: box and guarantee
€ 7.300 - 9.300

This splendid Speedmaster in rose gold is a tribute to the Olympic Games, its size and dial make it a unique object, complete with its accessories, this object is splendid both to wear and to complete the Omega collection.





588.

OMEGA SEAMASTER PROFESSIONAL PLANET OCEAN IN STAINLESS STEEL - From 2013

Reference N° 2209
Serial N° 85065946
Year: 2013 circa
Material: Stainless steel
Dimensions: 43mm
Calibre: Automatic Co-Axial
Crystal: Sapphire
Bracelet: Stainless steel
Accessories: Box and guarantee
€ 2.000 - 3.000

Currently working and in good conditions; accompanied by the full set



589.

OMEGA SEAMASTER PROFESSIONAL PLANET OCEAN IN STAINLESS STEEL - From 2013

Reference N° 168.1650
Year: 2013 circa
Material: Stainless steel
Dimensions: 43mm
Calibre: Automatic Co-Axial
Crystal: Sapphire
Bracelet: Stainless steel
Accessories: Box and guarantee
€ 2.000 - 3.000

Currently working and in good conditions; accompanied by the full set





590.
OMEGA SEAMASTER GMT, IN STAINLESS STEEL - From 2000

Reference N° 25345000
Serial N° 60330832
Year: 2000
Material: Stainless steel
Dimensions: 40mm
Calibre: Automatic CO-AXIAL
Crystal: Sapphire
Bracelet: Stainless steel
Accessories: Guarantee
€ 2.000 - 3.000

A sport GMT Seamaster by Omega; currently working.



592.
BREGUET TYPE XX, REF. 3807, IN STAINLESS STEEL - From 2008

Reference N° 3807
Serial N° 34763
Year: 2008
Material: Stainless steel
Dimensions: 38mm
Calibre: Automatic
Crystal: Sapphire
Bracelet: Stainless steel
Accessories: Warranty
€ 8.000 - 9.000

Classic sport chronographe Type XX by Breguet in good condition, currently working.



591.
ULYSSE NARDIN MARINE PERPETUAL, REF. 333-77, IN STAINLESS STEEL - From 2012

Reference N° 333-77
Serial N° 287/500
Year: 2012
Material: Stainless steel
Dimensions: 42mm
Calibre: Automatic
Crystal: Sapphire
Bracelet: Stainless steel
€ 8.000 - 9.000

A limited edition Marine watch by Ulysse Nardin in very good condition, currently working.



593.
OMEGA ELECTROQUARTZ IN STAINLESS STEEL - From 1973

Reference N° F8192 HZ
Year: 1973
Material: Stainless steel
Dimensions: 37 x 47 mm
Calibre: Electroquartz F8192 HZ
Crystal: Mineral
Bracelet: Stainless steel
€ 1.200 - 1.400

An unusual Electroquartz Omega for left-handed in good conditions, Actually not working; battery needs to be replaced (the functioning of the quartz movements is not guaranteed as the conditions of sale, assistance or repair may be required).



594.

CARTIER BALLON BLEU LIMITED EDITION "MANAGER 2011", IN WHITE GOLD
- From 2011

Reference N° 3375
Serial N° 123023QX
Year: 2011
Material: 18k white gold
Weight: 96,7g
Dimensions: 48mm
Calibre: Manual
Crystal: Sapphire
Bracelet: Original leather with white gold buckle
Accessories: Box, warranty and movie CD
€ 17.000 - 22.000

Cartier is known for its rare versions of wristwatches created since the early twentieth century; in this case Cartier has created a rare version to reward the top managers of Cartier around the world, as it turns out less than 15 examples of this splendid Ballon Bleu were produced and given away in 2011. This makes it, having never been marketed, an object of extreme rarity. In splendid condition and complete with its original kit.





595.

PANERAI LUMINOR DAYLIGHT SLYTECH "STALLONE" REF. 5218, IN STAINLESS STEEL - From 1996

Reference N° 5218-207/A

Serial N° 012/200

Year: 1996

Material: Stainless steel

Dimensions: 44mm

Calibre: Manual

Crystal: Sapphire

Bracelet: Leather with steel original buckle and 2 replacing bracelets

Accessories: Original presentation box with warship model and documents and tag

€ 18.000 - 28.000

This splendid Panerai made in the "Pre-Vendome" era - that is, before Officine Panerai was sold to the Vendome group (now Richemont) - created this splendid watch commissioned by Sylvester Stallone for his film Daylight. 100 examples were made despite the initial intention to produce 200; initially with blue dial; which Stallone had changed to black, but by now 5 models with blue dials were already in circulation and did not return to the factory. De facto 105 examples are in circulation, it is useless to underline the rarity of finding one in these conditions and full set.





596.

PANERAI RADIOMIR ALARM GMT LIMITED 54/60; REF. OP 6561 IN WHITE GOLD
- From 1999

Reference N° OP 6561

Serial N° BB 985363 N.54/60

Year: 1999

Material: White gold

Dimensions: 39mm

Calibre: Automatic

Crystal: Sapphire

Bracelet: Leather with stainless steel buckle

Accessories: Original box and documents

€ 25.000 - 35.000

Very rare and unusual white gold Alarm GMT Radiomir by Panerai, very good actually working conditions.





597.

PATEK PHILIPPE NAUTILUS "NAUTELLIPSE" IN STAINLESS STEEL - From 1981

Reference N° 3770

Year: 1981

Material: Stainless steel

Dimensions: 35mm

Calibre: Quartz

Crystal: Sapphire

Bracelet: Leather with stainless steel Patek Philippe Buckle

Accessories: Original Patek Philippe Pochette

€ 10.000 - 13.000

Not everyone knows that the reference 3770 is the rarest Nautilus model made by Patek Philippe. With just 300 examples including Stainless steel, Two-tone and gold models, made in two years of production 1981 and 1982 was a fusion of two of the most iconic watches of all time and two legends that define the brand: Nautilus and the Ellipse. Making it even more fascinating is that it was designed by Gerald Genta himself for Patek Philippe to help the underperforming Nautilus by fusing it with the help of the classic Ellipse. It is difficult to imagine that in the early 1980s it had a price approximately 50% higher than the Nautilus reference 3700. The watch we present is in excellent condition. Worn with care and with its original strap, it represents an excellent collector's item for fans of the Geneva brand.





598.

PATEK PHILIPPE NAUTILUS REF. 5711G-001, IN WHITE GOLD - From 2010

Reference N° 5711G-001
Serial N° 3983699
Year: 2010
Material: 18K White gold
Dimensions: 40mm
Calibre: Automatic cal. 324 S C
Crystal: Sapphire
Bracelet: Leather with 18k white gold deployant
Accessories: Box and warranty
€ 55.000 - 75.000

Launched in 2006 and inspired by the original reference 3700 Nautilus Jumbo series, the reference 5711 is the larger modern Nautilus case with central seconds. This model with a precious white gold case is a very elegant version of the Nautilus that could fit on an elegant dress. In excellent condition and accompanied by its original set.





599.

PATEK PHILIPPE ANNUAL CALENDAR FLYBACK CHRONOGRAPH, REF. 5960P, IN PLATINUM - From 2006

Reference N° 5960P-001
Serial N° 350***90
Year: 2006
Material: Platinum
Dimensions: 40,5 mm
Calibre: Automatic cal. CH 28-520
Crystal: Sapphire
Bracelet: Leather with platinum deployant buckle
Accessories: Original wooden box and warranty, travel leather pochette and pusher key
€ 45.000 - 55.000

Launched in 2006 the reference 5960 annual calendar flyback chronograph alongside with the Nautilus 5980 was the first models to incorporate a chronograph on a non-perpetual calendar complication. And was also the first chronograph movement entirely designed and assembled by the Patek Philippe in-house manufacture. The design inspired to the classic Calatrava result with a very sporty model despite the overall classic leather bracelet and complications. This model is in very good conditions and produced the first year of the model launch.





600.

GIRARD PERREGAUX 1966 ANNUAL CALENDAR IN WHITE GOLD - from 2015

Reference N° 49538
Serial N° OG N. 81
Year: 2015
Material: 18K white gold
Weight: 81g
Dimensions: 40mm
Calibre: Automatico cal. GP 3300
Crystal: Sapphire
Bracelet: Original leather with white gold deployant
Accessories: Box

Very elegant Annual calendar in white gold from Girard Perregaux; currently working.
€ 7.000 - 9.000





601.

ROLEX DAYTONA "NO DAYTONA", REF. 16523, IN STEEL AND GOLD - From

Reference N° 16523
Serial N° P124391
Year: 2000
Material: Stainless steel and gold
Dimensions: 40mm
Calibre: Automatic cal. 4030
Crystal: Sapphire
Bracelet: Stainless steel and gold
Accessories: Original wooden box, guarantee, documents, and tags.
€ 25.000 - 35.000

Among the rarities that we have seen on some Rolex Daytona models in recent years, this is certainly not usual, as in the first dials of the 60s and 70s the "Daytona" writing is missing, a very rare peculiarity which has been studied on some rare examples from the late 90s early 2000s, making this watch, with its splendid gunmetal gray dial, an even more rare and desirable object. In excellent condition and complete with its original kit.





602.

ROLEX DAYTONA OYSTERFLEX "SULTANATE OF OMAN - KHANJAR" REF. 116518LN, IN YELLOW GOLD - From 2018

Reference N° 116518LN

Serial N° 3D62Q394

Year: 2018

Material: 18k yellow gold

Weight: 155,6g

Dimensions: 40mm

Calibre: Automatic cal.4130

Crystal: Sapphire

Bracelet: Rubber with 18k yellow gold deployant

Accessories: Original box with logo and guarantee

€ 40.000 - 50.000

The Daytona is one of the flagship models of the Geneva brand, over the years they have been produced with many variations and customizations by Rolex, among the rarest without doubt the versions for the Sultanate of Oman. This model, sold in 2018 by the well-known retailer Khimji Ramdas LLC, shows the typical graving on the back with the "Khanjar" swords as well as on the box. Preserved in excellent condition, it is certainly a splendid and rare collector's item.





603.

ZENITH EL PRIMERO CHRONOGRAPH IN 18K YELLOW GOLD - from 1990

Reference N° 06-0050-400
Year: 1990
Material: 18K Yellow gold
Weight: 139,3g
Dimensions: 40mm
Calibre: Automatic cal. 400
Crystal: Plexiglass
Bracelet: 18k yellow gold
€ 8.000 - 9.600

An iconic chronograph powered by the famous El Primero by Zenith, in yellow gold, good conditions and actually working.





604.

ROLEX COSMOGRAPH DAYTONA RÉF. 6239 "PAUL NEWMAN" IN 18K YELLOW GOLD - From 1969

Reference N° 6239

Serial N° 20***68

Year: 1969

Material: 18k Yellow Gold

Dimensions: 37mm

Calibre: 722/1

Crystal: Plexiglass

Bracelet: 18k Yellow gold with 71 finals

Accessories: Expertise by Mr. Valter Barocco

€ 350.000 - 450.000





When we talk about Rolex Daytona exotic dial, also called "Paul Newman", we immediately think of the reference 6239, which was precisely the reference of the steel model worn by the famous actor and pilot. Although the reference 6239 entire production is supposed to be of about 14,000 units, only about 300 pieces were in 18k yellow gold cases, featuring an exotic or non-exotic dial. Only a few pieces of the Paul Newman champagne dial-equipped production has appeared at public auctions by today. The watch we are presenting belongs to the original owner's family.



Worn with care, this stunning watch has been preserved in original condition. The engravings between the lugs are extremely clear, as well as the distinctive markings on the underside of the lugs. Despite a slight mark under the Rolex Cosmograph lettering, the dial presents a gorgeous creamy champagne tone in splendid condition. Delivered by the family of the original owner, this watch is extremely rare and well preserved in its original condition representing a very rare opportunity for many collectors.





605.
ROLEX OYSTER PERPETUAL, REF. 14208, IN YELLOW GOLD - From 1992

Reference N° 14208
Serial N° N***417
Year: 1992
Material: 18k yellow gold
Weight: 69g
Dimensions: 34mm
Calibre: Automatic
Crystal: Sapphire
Bracelet: Leather with gold buckle
Accessories: Original box and guarantee
€ 5.500 - 6.600

An extremely well preserve and never worn Rolex Oyster Perpetual, accompanied by the full set with original sticker on the back, currently working.



606.
ROLEX OYSTER PERPETUAL, REF. 14238N, IN YELLOW GOLD - From 1992

Reference N° 14238
Serial N° N199415
Year: 1992
Material: 18k yellow gold
Weight: 69g
Dimensions: 34mm
Calibre: Automatic
Crystal: Sapphire
Bracelet: Leather with gold buckle
Accessories: Original box and guarantee
€ 3.800 - 4.600

An extremely well preserve and never worn Rolex Oyster Perpetual, accompanied by the full set with original sticker on the back, currently working.





607.

ROLEX GMT MASTER REF. 6542, "PUSSY GALORE" IN STAINLESS STEEL - From 1959

Reference N° 6542
 Serial N° 38****
 Year: 1959
 Material: Stainless steel
 Dimensions: 38mm
 Calibre: Automatic cal. 1030
 Crystal: Plexiglass
 Bracelet: Stainless steel
 Accessories: Original box, guarantee, movement guarantee, purchase invoice, COSC and expertise by Mr. Valter Barocco
 € 60.000 - 90.000

In 1954 Rolex was developed for the well-known American airline Pan American World Airways (Pan Am), among the rarest aspects of this watch, produced for just 4 years until 1959, is the red and blue Bakelite bezel, with radium-filled twenty-four hour numerals, the reference 6542 was designed to ensure that the viewer can follow a second time zone in any weather condition. Bakelite was chosen as the bezel material for its high readability, but due to its fragility, Rolex quickly decided to replace the Bakelite with a metal bezel insert.

The present example stands out for its original Bakelite bezel, still radioactive, which over time has transformed into a splendid shade of burgundy red and midnight blue. The tropical and spider golden dial is in perfect harmony with the indexes which turn to brown tones. This model is also known for being worn by the character "Pussy Galore" played by actress Honor Blackman, in the iconic 1964 film "Goldfinger" in the famous James Bond film 007.

The watch we present is in splendid original condition; still radioactive, the mechanics are in perfect condition, and the watch is accompanied by its original set with period documents and invoice as just delivered by the dealer. A unique item for any collector.





2 . 4

20 . 22

18

16

14

12

10

8

6

ROLEX
PERPETUAL

GMT-MASTER II
OFFICIALLY CERTIFIED
CHRONOMETER



608.

ROLEX COSMOGRAPH DAYTONA "FAP - FUERZA AEREA DEL PERU" REF. 6263, IN STAINLESS STEEL - From 1975

Reference N° 6263
Serial N° 4049225
Year: 1975
Material: Stainless steel
Dimensions: 37mm
Calibre: Manual cal. 727
Crystal: Plexiglass
Bracelet: Stainless steel
Accessories: Expertise by Watches Art & Photography & Valter Barocco.
€ 80.000 - 120.000

Well-preserved examples of these Rolexes built for the Peru Air Force (FAP) do not often appear on the market. Extremely rare, most of these chronographs have been massively restored or simply disappeared in action. The truly distinctive feature of this watch, in addition to being a reference 6263, among the rarest and most coveted references by manual winding Daytona collectors, is the surprising excellent condition which makes it truly a unique object.

Vintage Rolex of military origin are often considered one of the most desired categories in the art of watch collecting. The Swiss manufacturer is known to have collaborated with some of the highest ranks of the armed forces around the world, including the English Royal Navy and the Italian police. The Peruvian Army commissioned them to produce military watches for high-ranking officers in command in the Air Force.





FUERZA

AEREA

DEL

PERU

123

122





609.

OMEGA x TISSOT EXTRASIZE TANK IN STAINLESS STEEL - From 1930

Year: 1930

Material: Stainless steel

Dimensions: 28 x 50mm

Calibre: Manual Omega x Tissot

Crystal: Mineral

Bracelet: Leather with steel buckle

€ 1.800 - 2.200

A very rare and extra size tank by Omega and Tissot, very well preserved and currently working.





610.
AUDEMARS PIGUET ELLIPSE IN YELLOW GOLD - From 1975

Reference N° 5349
Serial N° 86195
Year: 1975
Material: 18k yellow gold
Weight: 36g
Dimensions: 27x37mm
Calibre: Manual
Crystal: Mineral
Bracelet: Leather with gold buckle
€ 2.200 - 3.200

An unusual and rare Ellipse oval watch from Audemars Piguet in yellow gold, well preserved and currently working.



611.
AUDEMARS PIGUET HUITIÈME, REF 25644, IN YELLOW GOLD - From 1990

Reference N° 25644
Serial N° C 66513
Year: 1990
Material: 18k Yellow gold
Weight: 80,2g
Dimensions: 40mm
Calibre: Automatic
Crystal: Sapphire
Bracelet: Original leather with gold AP buckle
Accessories: Service box
€ 6.000 - 8.000

A less known but very iconic chronograph from Audemars Piguet is the Huitième collection, with a round case and splendid dial typical of the house of Le Brassus; This splendid object is in excellent condition and currently working.





612.

AUDEMARS PIGUET ROYAL OAK DUAL TIME, REF. 25730SA, IN STEEL AND GOLD
- From 1996

Reference N° 25730SA

Serial N° 377525

Year: 1996

Material: Stainless steel and gold

Dimensions: 36mm

Calibre: Automatic

Crystal: Sapphire

Bracelet: Stainless steel and gold

Accessories: Original box and warranty

€ 25.000 - 30.000

An automatic and very fine Royal Oak Dual Time with calendar and power reserve, in stainless steel and gold, in good conditions and currently working.





613.

AUDEMARS PIGUET QUANTIEME PERPETUEL, REF. 25820SP IN STAINLESS STEEL AND PLATINUM - From 2005

Reference N° 25820SP
Serial N° F77713-0343
Year: 1999
Material: Stainless steel and platinum
Weight: 125g
Dimensions: 39mm
Calibre: Automatic cal.2120/2802
Crystal: Sapphire
Bracelet: Stainless steel and platinum
Accessories: Box and guarantee
€ 75.000 - 90.000

Launched in 2005 and produced until 2013, the Perpetual Calendar ref. 25820 was made in various metals and dial colors with a total production of 1235 pieces. The present example is one of 343 of the 378 pieces made in stainless steel and platinum, mounting the deep black Grande Tapisserie dial and is considered among the most attractive dial variants. With the same case diameter as the original Royal Oak, these early perpetual calendars are extremely rare and highly sought after in today's market.







614.

AUDEMARS PIGUET ROYAL OAK DAY-DATE, REF. 25594, IN YELLOW GOLD - From 1990

Reference N° 25594
Serial N° D26544 / 1513
Year: 1990
Material: 18K yellow gold
Weight: 168g
Dimensions: 36mm
Calibre: Automatic
Crystal: Sapphire
Bracelet: 18K yellow gold
Accessories: Original box
€ 35.000 - 45.000

The Royal Oak was born as a sports watch and only now in the 70s designed by the famous Gerald Genta; it comes in different complications and materials even in this catalogue; this one, in 18k yellow gold, features the moon phases and day-date complication. In splendid condition accompanied by its original box.





615.

AUDEMARS PIGUET ROYAL OAK QUANTIEME PERPETUEL AUTOMATIQUE, REF. 25686PR, N. 20/25 IN PLATINUM AND RED GOLD - From 1997

Reference N° 25686PR.OO.0944PR.01

Serial N° D44077-0020

Year: 1997

Material: Platinum and red gold

Dimensions: 39mm

Calibre: Automatic Cal. 2120/2800

Crystal: Sapphire

Bracelet: Platinum and red gold

Accessories: Original electric box, tag, and extract from the archives

€ 200.000 - 300.000

This rare reference, 25686, was produced from 1990 to 1998, these are perpetual calendars, specifically the Royal Oak model, and it was a series of only 299 examples, in platinum and rose gold only 25 examples were produced.

The watch we present is number 20 of this small series, and features a splendid Salmon pink dial, it is in perfect almost never worn condition, with its original box and tag and we have been provided with the archive extract to confirm datas.

The watch was purchased in Beverly Hills in 1999 by the current owner, representing a true rarity for all collectors.





3068951 01094 APR/10
4D D44077.02
4D





616.

AUDEMARS PIGUET ROYAL OAK 50TH ANNIVERSARY, REF. 15550SR, IN STEEL AND GOLD - From 2022

Reference N° 15550SR
Serial N° FMO864R
Year: 2023
Material: Stainless steel and 18k pink gold
Dimensions: 37mm
Calibre: Automatic cal. BN6017
Crystal: Sapphire
Bracelet: Stainless steel and 18k pink gold
Accessories: Original box and warranty
€ 25.000 - 35.000

This sparkling, rarely if ever worn, Audemars Piguet Royal Oak 37mm in steel and rose gold is a beautiful tribute to the 50th anniversary of the Royal Oak. Complete set and in perfectly working.





617.
BVLGARI OCTO CHRONOGRAPH IN PINK GOLD - From 2023

Reference N° BGO P 41 SG CH
 Serial N° PO0734
 Year: 2023
 Material: 18k Pink gold with steel back
 Weight: 139g
 Dimensions: 41mm
 Calibre: Automatic cal. BVL 328
 Crystal: Sapphire
 Bracelet: Caucciu with 18k pink gold buckle
 Accessories: Box and warranty
 € 8.000 - 12.000

A like new condition Octo by Bvlgari bought in 2023 in Beverly Hills ; The Octo model by Bulgari is one of contemporary watchmaking news, characterized by its distinctive octagonal shape and sophisticated design. Introduced in 2012, this collection seamlessly blends Italian elegance with Swiss precision. The Octo's allure lies in its architectural aesthetics, inspired by the harmony of geometric shapes. Over the years, Bulgari has continually refined and expanded the Octo line, showcasing a fusion of innovation and timeless style in the world of luxury watches.



618.
BVLGARI BVLGARI, REF. BB 25GL, IN YELLOW GOLD - From 1990

Reference N° BB 25GL
 Serial N° G17816
 Year: 1990
 Material: 18k yellow gold
 Weight: 30g
 Dimensions: 25mm
 Calibre: Quartz
 Crystal: Sapphire
 Bracelet: Leather with 18k yellow gold original buckle
 Accessories: Original box and guarantee.
 € 1.200 - 1.800

An iconic Bvlgari in yellow gold, actually not working; battery needs to be replaced (the functioning of the quartz movements is not guaranteed as the conditions of sale, assistance or repair may be required).



619.
BULGARI BVLGARI MONTE-CARLO IN PVD - From 2000

Serial N° 05/200
 Year: 2000 circa
 Material: Steel PVD plated
 Dimensions: 33mm
 Calibre: Automatic
 Crystal: Mineral
 Bracelet: Leather
 € 600 - 800

A limited edition for all the most important city of the world, this made for Monte-Carlo, currently working.



620.
BVLGARI RETTANGOLO, REF. RT 45 S, IN STAINLESS STEEL - From 2006

Reference N° RT 45 S
Serial N° L6255
Year: 2006
Material: Stainless steel
Dimensions: 26 x 45mm
Calibre: Automatic
Crystal: Sapphire
Bracelet: Leather with signed buckle
€ 400 - 700

An unusual rectangular watch by Bulgari in stainless steel, currently working.



622.
CARTIER TANK AMERICANE CHRONOGRAPH IN YELLOW GOLD - From 2000

Serial N° 170267624CD
Year: 2000
Material: 18k yellow gold
Weight: 66,5g
Dimensions: 26 x 44mm
Calibre: Quartz
Crystal: Sapphire
Bracelet: Original leather with 18k buckle
Accessories: Box and service
€ 4.800 - 5.800

Very lovely iconic Tank American chrono by Cartier, Actually not working; battery needs to be replaced (the functioning of the quartz movements is not guaranteed as the conditions of sale, assistance or repair may be required).



621.
REPOSSI PIETRO BERRI IN YELLOW GOLD - from 2005

Reference N° R1YQ N.17
Year: 2005
Material: 18k yellow gold
Weight: 68,5g
Dimensions: 30x45mm
Calibre: Quartz
Crystal: Sapphire
Bracelet: Original leather with gold buckle
Accessories: Box
€ 1.500 - 2.500

A Reossi from Monaco in yellow gold; currently working.





623.

ROLEX DAYTONA REF. 16528, IN YELLOW GOLD - From 1991

Reference N° 16528
Serial N° L703405
Year: 1991
Material: 18K Yellow gold
Weight: 155g
Dimensions: 40mm
Calibre: Automatic
Crystal: Sapphire
Bracelet: 18K Yellow gold
Accessories: Original wooden box, guarantee, accessories and service from Rolex dated 2017
€ 40.000 - 50.000

A very well preserved and iconic Rolex Daytona in yellow gold; accompanied by all the accessories; currently working.





624.
ROLEX DAY-DATE, REF. 1803, IN YELLOW GOLD - From 1972

Reference N° 1803
Serial N° 3053678
Year: 1972
Material: 18k yellow gold
Dimensions: 36mm
Calibre: Automatic
Crystal: Plexiglass
Bracelet: Leather with steel buckle
€ 6.500 - 9.000

A classic and well preserved Day-Date with Italian day disc, currently working.



625.
ROLEX OYSTERDATE PERPETUAL IN STAINLESS STEEL - From 1954

Reference N° 6518
Year: 1954
Material: Stainless steel
Dimensions: 33mm
Calibre: cal. 1080
Crystal: Plexiglass
Bracelet: Original leather with steel buckle
€ 4.500 - 7.500

Very well preserved honeycomb dial Oysterdate Rolex, in original preserved conditions with original ancient leather bracelet by Rolex and original buckle, currently working.





626.
ROLEX PRECISION IN STAINLESS STEEL - From 1958

Reference N° 4220
Serial N° 370211
Year: 1958
Material: Stainless Steel
Dimensions: 29mm
Calibre: Manual
Crystal: Plexiglass
Bracelet: Leather with steel buckle
€ 1.000 - 1.500

A classic 50s Rolex, currently working dial restored.



627.
VACHERON CONSTANTIN POCKET WATCH, REF. 4118, IN WHITE GOLD - from 1967

Reference N° 4118
Serial N° 406063
Year: 1967
Material: 18k white gold
Weight: 63g
Dimensions: 46mm
Calibre: Manual 439/BC
Crystal: Plexiglass
€ 2.500 - 3.000

A very classy and elegant pocket watch in white gold from Vacheron Constantin, currently working





628.
VACHERON CONSTANTIN EXTRASIZE IN YELLOW GOLD - From 1965

Serial N° 333488
Year: 1965
Material: 18k yellow gold
Weight: 54g
Dimensions: 38mm
Calibre: Manual cal. P454/5B
Crystal: Plexiglass
Bracelet: leather with steel buckle
€ 7.000 - 9.000

An out of ordinary extra size watch from Vacheron Constantin in very good conditions, currently working.



629.
LONGINES TANK IN YELLOW GOLD - From 1950

Serial N° 5147511
Year: 1950
Material: 18K Yellow gold
Weight: 32g
Dimensions: 25 x 42mm
Calibre: Manual
Crystal: Mineral
Bracelet: Leather with 18k gold signed buckle
€ 1.800 - 2.200

An extra size classic rectangular dress watch by Longines; currently working.





630.

PATEK PHILIPPE MILITARY, IN YELLOW GOLD - From 1930

Reference N° 285066
Serial N° 2192225
Year: 1930
Material: 18k yellow gold
Weight: 23g
Dimensions: 26mm
Calibre: Manual
Crystal: Mineral
Bracelet: Leather with steel buckle
€ 15.000 - 18.000

An extremely rare and in very well preserved original condition. Currently working.





631.

PATEK PHILIPPE CALATRAVA, REF. 2428, IN YELLOW GOLD - From 1949

Reference N° 2428
Serial N° 952545
Year: 1949
Material: 18k yellow gold
Weight: 42g
Dimensions: 34mm
Calibre: Manual
Crystal: Plexiglass
Bracelet: Leather with original gold buckle
Accessories: Original box and guarantee
€ 13.000 - 18.000

A very unusual extra sized lugs Calatrava from Patek Philippe, accompanied by the very rare to find in wristwatches from the 40s original guarantee, very well preserved and currently working.





632.

MOVADO TRI-COMPAX 14K YELLOW GOLD - From 1949

Reference N° 44823
Serial N° B498592
Year: 1945
Material: 14K yellow gold
Weight: 39g
Dimensions: 33mm
Calibre: Manual
Crystal: Plexiglass
Bracelet: Leather with steel buckle
€ 1.200 - 1.600

Classic tri-compax from Movado in good and working conditions.



634.

TISSOT ESCUDO LIMITED EDITION 077/200 IN 18K PINK GOLD - From 2000

Serial N° 077/200
Year: 2000 circa
Material: 18 Pink gold
Weight: 78,2g
Dimensions: 40mm
Calibre: Automatic
Crystal: Plexiglass
Bracelet: Original leather with Pink gold deployant
Accessories: Box and warranty with commemorative coin
€ 2.000 - 3.000

A rare Tissot Escudo limited edition in pink gold, very good condition and actually working.



633.

MOVADO WATCH IN STAINLESS STEEL - From 2007

Reference N° 84-35-685
Serial N° 1717630
Year: 2007
Material: Stainless steel
Dimensions: 33mm
Calibre: Quartz
Crystal: Mineral
Bracelet: Leather
Accessories: Box
€ 200 - 220

A new old stock unusual lady watch by Movado. Actually not working; battery needs to be replaced (the functioning of the quartz movements is not guaranteed as the conditions of sale, assistance or repair may be required).



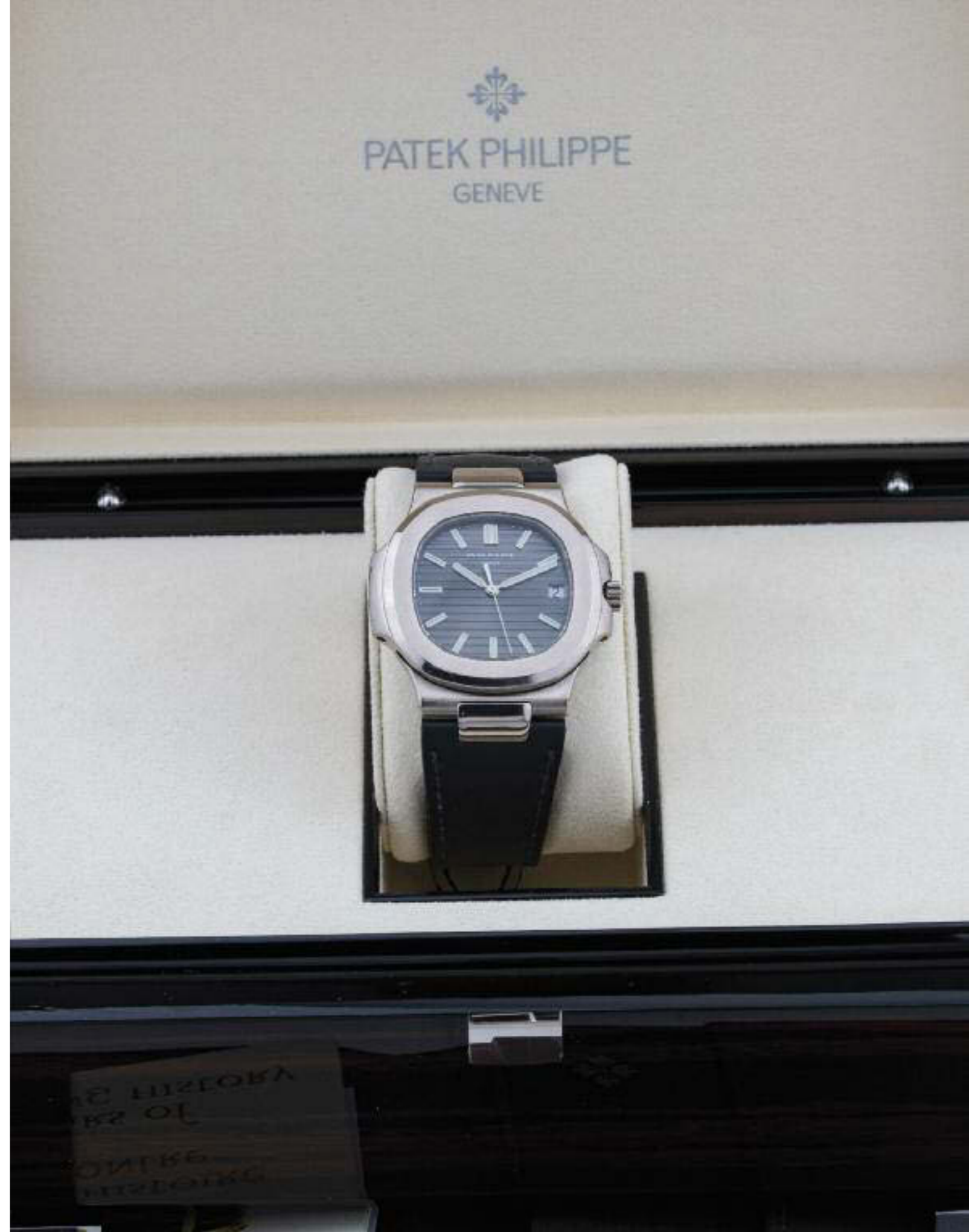


635.

PATEK PHILIPPE NAUTILUS REF. 5711G-001, IN WHITE GOLD - From 2008

Reference N° 5711G-001
Serial N° 3642915
Year: 2008
Material: 18K White gold
Weight: 140g
Dimensions: 40mm
Calibre: Automatic cal. 324 SC
Crystal: Sapphire
Bracelet: Leather with 18k white gold deployant
Accessories: Box and warranty
€ 55.000 - 66.000

Launched in 2006 and inspired by the original reference 3700 Nautilus Jumbo series, the reference 5711 is the larger modern Nautilus case with central seconds. This model with a precious white gold case is a very elegant version of the Nautilus that could fit on an elegant dress. In excellent condition and accompanied by its original set.





636.
IWC INTERNATIONAL WATCH CO. IN YELLOW GOLD - From 1960

Serial N° 1003724
Year: 1960
Material: 18K Yellow gold
Weight: 34g
Dimensions: 32mm
Calibre: Manual
Crystal: Plexiglass
Bracelet: Lizard leather

Lot sold with no reserve price.
€ 500 - 1.000

A very fine and elegant dress watch by International Watch Co; Currently working.



638.
UNIVERSAL GENEVE IN YELLOW GOLD - From 1960

Reference N° 112255 2
Serial N° 1686143
Year: 1960
Material: 18K yellow gold
Weight: 31g
Dimensions: 34mm
Calibre: Manual
Crystal: Plexiglass
Bracelet: Leather
€ 900 - 1.100

A classic dress watch by Universal Genève, currently working.



637.
VACHERON CONSTANTIN PATRIMONY, REF. 6714, IN YELLOW GOLD - From 1970

Reference N° 6714
Serial N° 392165
Year: 1970
Material: 18k yellow gold
Weight: 24g
Dimensions: 30mm
Calibre: Manual cal.1003
Crystal: Plexiglass
Bracelet: Leather with gold buckle
€ 1.800 - 2.500

A very classic, elegant, dress watch from Vacheron Constantin, in good conditions and currently working.



639.
OMEGA SPIDER LUGS IN GOLD PLATED - From 1960

Reference N° 2706-4
Year: 1960
Material: Plated gold laminated
Dimensions: 35mm
Calibre: Manual 266
Crystal: Plexiglass
Bracelet: Leather with original plated buckle
€ 500 - 600

A spider lugs wristwatch by Omega, currently working



640.
OMEGA DEVILLE CHRONO, IN YELLOW GOLD - From 1967

Reference N° 141 009 67
Year: 1967
Material: 18k yellow gold
Weight: 42,3g
Dimensions: 35mm
Calibre: Manual
Crystal: Plexiglass
Bracelet: Leather with steel buckle
€ 2.500 - 4.000

A vintage gold chrono by Omega; currently working.



642.
CUERVO Y SOBRINOS CHRONO IN GOLD PLATED - From 1970

Serial N° 733028
Year: 1970
Material: Gold plated
Dimensions: 35mm
Calibre: Manual
Crystal: Plexiglass
Bracelet: leather
€ 500 - 600

A very well preserved vintage Cuervo y Sobrinos from Havana Cuba, currently working.



641.
OMEGA CHRONOGRAPH IN YELLOW GOLD - From 1963

Reference N° 101 010 63
Year: 1963
Material: 18k yellow gold
Weight: 44,8g
Dimensions: 34mm
Calibre: Manual
Crystal: Plexiglass
Bracelet: Leather with steel buckle
€ 4.000 - 6.000

A vintage gold chrono by Omega; currently working.



643.
CUERVO Y SOBRINOS CHRONO IN STEEL - From 1970

Serial N° 699405
Year: 1970
Material: Steel
Dimensions: 37mm
Calibre: Manual
Crystal: Plexiglass
Bracelet: Leather
€ 500 - 600

A very well preserved vintage Cuervo y Sobrinos from Havana Cuba, currently working.



644.
EBERHARD & CO. CHRONOGRAPH IN STEEL AND GOLD - From 1990

Reference N° 32031
Serial N° 0315
Year: 1990
Material: Stainless steel and gold
Dimensions: 35mm
Calibre: Manual
Crystal: Sapphire
Bracelet: Leather with steel signed buckle
Accessories: Box and warranty
€ 600 - 800

A steel and gold chrono from Eberhard & Co. in very good conditions, currently working.



646.
ZENITH AUTOMATIC STAINLESS STEEL - From 1980

Reference N° 01-0030-380
Year: 1980
Material: Stainless steel
Dimensions: 32x42mm
Calibre: Automatic
Crystal: Sapphire
Bracelet: Leather

Lot sold with no reserve price.
€ 300 - 600

An unusual and in very good condition automatic watch by Zenith, currently working.



645.
GIRARD PERREGAUX TANK IN YELLOW GOLD - From 1956

Serial N° 48741482
Year: 1956
Material: 18k yellow gold
Weight: 31g
Dimensions: 36 x 23mm
Calibre: Manual
Crystal: Mineral
Bracelet: Leather with steel buckle
€ 900 - 1.100

A very elegant tank by Girard Perregaux in gold; currently working.



647.
ROLEX MARCONI IN SILVER - From 1920

Reference N° 580
Serial N° 824395
Year: 1920
Material: 925 Silver
Weight: 25g
Dimensions: 26x32mm
Calibre: Manual
Crystal: Mineral
Bracelet: Leather
€ 500 - 700

A silver ancient Rolex Marconi watch, currently working.



648.
PIAGET TANK, REF. 9294, IN YELLOW GOLD - From 1970

Reference N° 9294
Serial N° 242981
Year: 1970
Material: 19k yellow gold
Weight: 26g
Dimensions: 23x26mm
Calibre: Manual
Crystal: Mineral
Bracelet: Leather, gold buckle
Accessories: Box guarantee and pochette
€ 2.000 - 3.000

A very classic and elegant tank by Piaget, currently working.



650.
BAUME & MERCIER CLASSIMA "KALMI ITALIA", EN OR ROSE - Vers 2016

Reference N° Italia 65707
Serial N° 5541536
Year: 2016
Material: 18K Pink Gold
Weight: 56 g
Dimensions: 38 mm
Calibre: Automatic ETA
Crystal: Sapphire
Bracelet: Leather with 18K Yellow Gold Buckle
€ 2.000 - 3.000

Elegant and in very good condition automatic Baume & Mercier actually working.



649.
PIAGET ULTRAPLAT IN YELLOW GOLD - roI 1980

Reference N° 9015
Serial N° 221650
Year: 1980
Material: 18k yellow gold
Weight: 22g
Dimensions: 26mm
Calibre: Manual
Crystal: Mineral
Bracelet: Leather with gold buckle
€ 800 - 1.400

A classic and iconic Piaget ultra-plat in yellow gold; well preserved and currently working.





651.
ROLEX OYSTER PERPETUAL DATEJUST IN YELLOW GOLD - From 1961

Reference N°6517
Serial N° 1540086
Year: 1961
Material: 18K Yellow gold
Weight: 50g
Dimensions: 24mm
Calibre: Automatic cal.1161
Crystal: Plexiglass
Bracelet: 18K Yellow gold
€ 1.800 - 2.200

A yellow gold Datejust from 60s by Rolex, currently working.



653.
INVICTA LADY BRACELET WATCH IN YELLOW GOLD - From 1970

Reference N° 569
Serial N° 22552
Year: 1970
Material: 18k yellow gold
Weight: 24g
Dimensions: 12x40mm
Calibre: Manual
Crystal: Plexiglass
Bracelet: 18k yellow gold
€ 650 - 800

A fine lady bracelet watch; currently working



652.
ARDINA LADY BRACELET WATCH IN YELLOW GOLD - From 1970

Year: 1970
Material: 18k yellow gold
Weight: 17g
Dimensions: 15 x 32mm
Calibre: Manual
Crystal: Plexiglass
Bracelet: 18k yellow gold
€ 500 - 600

A fine lady bracelet watch; currently not working



654.
C.H. MEYLAN GENEVE BRACELET WATCH IN YELLOW GOLD - From 1960

Serial N° 76363
Year: 1960 circa
Material: 18k yellow gold
Weight: 16,3g
Dimensions: 10 x 55 x 48mm
Calibre: Manual
Crystal: Plexiglass
Bracelet: 18k yellow gold
€ 300 - 400

A lady bracelet watch by C.H. Meylan Genève in yellow gold, currently not working



655.
ANONYMOUS LADY WATCH IN PLATINUM AND DIAMOND - From 1920

Year: 1920 CA
Material: Platinum and diamonds
Weight: 21,7g
Dimensions: 36x11x110
Calibre: Manual
Crystal: Mineral
Bracelet: Platinum and diamonds
Accessories: Pochette
€ 1.000 - 1.800

A preserved and currently working lady Art Deco watch from 1920.



657.
EBERHARD & Co. TENNIS WATCH IN WHITE GOLD AND DIAMONDS - From 1955

Reference N° 202
Serial N° 656
Year: 1955
Material: 18K white gold
Weight: 20,6g
Dimensions: 15mm
Calibre: Manual
Crystal: Plexiglass
Bracelet: 18K white gold tennis diamond 17,5cm
€ 800 - 1.000

An elegant Tennis bracelet watch by Eberhard & Co. Currently working.



656.
GRUEN LADY BRACELET WATCH IN PLATINUM AND DIAMONDS - From 1970

Year: 1970
Material: Platinum and diamonds
Weight: 25g
Dimensions: 11 x 39mm
Calibre: Manual
Crystal: Plexiglass
Bracelet: Platinum and gold
€ 500 - 800

A fine lady bracelet watch; currently not working



658.
ZENITH IN WHITE GOLD AND DIAMONDS - From 1960

Serial N° 067796
Year: 1960
Material: 18k white gold
Weight: 36g
Dimensions: 15mm
Calibre: Manual
Crystal: Mineral
Bracelet: 18k white gold
€ 800 - 1.000

Elegant lady bracelet watch by Zenith; currently working.



659.
MOVADO LADY WATCH IN STAINLESS STEEL - From 2000

Reference N° 11-A1-531
Serial N° 4076167
Year: 2000
Material: Stainless steel
Dimensions: 21mm
Calibre: Quartz
Crystal: Mineral
Bracelet: Stainless steel
Accessories: Box
€ 200 - 400

A new old stock unusual lady watch by Movado. Actually not working; battery needs to be replaced (the functioning of the quartz movements is not guaranteed as the conditions of sale, assistance or repair may be required).



662.
MOVADO LADY WATCH IN STAINLESS STEEL - From 2002

Reference N° 84-G4-1842
Serial N° 3937596
Year: 2002
Material: Stainless steel
Dimensions: 26mm
Calibre: Quartz
Crystal: Mineral
Bracelet: Stainless steel
Accessories: Box
€ 200 - 400

A new old stock unusual lady watch by Movado. Actually not working; battery needs to be replaced (the functioning of the quartz movements is not guaranteed as the conditions of sale, assistance or repair may be required).



660.
MOVADO WATCH IN STAINLESS STEEL - From 2000

Reference N° 84-11-455A
Serial N° 3757403
Year: 2000
Material: Stainless steel
Dimensions: 24x35mm
Calibre: Quartz
Crystal: Mineral
Bracelet: Stainless steel
Accessories: Box
€ 200 - 220

A new old stock unusual watch by Movado. Actually not working; battery needs to be replaced (the functioning of the quartz movements is not guaranteed as the conditions of sale, assistance or repair may be required).



663.
MOVADO WATCH IN STAINLESS STEEL - From 2007

Reference N° 84-A1-1950
Serial N° 5853246
Year: 2007
Material: Stainless steel
Dimensions: 27x49mm
Calibre: Quartz
Crystal: Mineral
Bracelet: Leather
Accessories: Box
€ 200 - 400

A new old stock unusual lady watch by Movado. Actually not working; battery needs to be replaced (the functioning of the quartz movements is not guaranteed as the conditions of sale, assistance or repair may be required).



661.
MOVADO WATCH IN STAINLESS STEEL - From 2005

Reference N° 84-C4-620
Serial N° 2811315
Year: 2005
Material: Stainless steel
Dimensions: 23x45mm
Calibre: Manual
Crystal: Mineral
Bracelet: Leather
Accessories: Box
€ 200 - 400

A new old stock unusual lady watch by Movado. Actually working.



664.
MOVADO WATCH IN STAINLESS STEEL - From 2007

Reference N° 84-A1-1950
Serial N° 5852941
Year: 2007
Material: Stainless steel
Dimensions: 27x49mm
Calibre: Quartz
Crystal: Mineral
Bracelet: Leather
Accessories: Box
€ 200 - 400

A new old stock unusual lady watch by Movado. Actually not working; battery needs to be replaced (the functioning of the quartz movements is not guaranteed as the conditions of sale, assistance or repair may be required).



665.
MOVADO LADY WATCH IN GOLD AND DIAMONDS - From 1990 circa

Reference N° 41-90-820
Serial N° 1142045
Year: 1990 circa
Material: Gold and diamonds
Weight: 18,5g
Dimensions: 24mm
Calibre: Quartz
Crystal: Mineral
Bracelet: Leather
Accessories: Box
€ 500 - 600

A new old stock unusual lady watch by Movado. Actually not working; battery needs to be replaced (the functioning of the quartz movements is not guaranteed as the conditions of sale, assistance or repair may be required).



667.
MOVADO PAIR OF MAN AND LADY WATCH IN STAINLESS STEEL PVD - From 1990

Year: 1990
Material: Stainless steel PVD
Dimensions: 32mm + 24mm
Calibre: Quartz
Crystal: Plexiglass
Bracelet: Leather with steel buckle
Accessories: Box
€ 200 - 400

A new old stock couple watch set by Movado. Actually not working; battery needs to be replaced (the functioning of the quartz movements is not guaranteed as the conditions of sale, assistance or repair may be required).



666.
MOVADO LADY WATCH IN GOLD - From 1990 circa

Reference N° 40-90-820
Year: 1990 circa
Material: Gold
Weight: 19,3g
Dimensions: 24mm
Calibre: Quartz
Crystal: Mineral
Bracelet: Leather
Accessories: Box
€ 500 - 600

A new old stock unusual lady watch by Movado. Actually not working; battery needs to be replaced (the functioning of the quartz movements is not guaranteed as the conditions of sale, assistance or repair may be required).



668.
MOVADO PAIR OF MAN AND LADY WATCH IN STAINLESS STEEL - From 1990

Year: 1990
Material: Stainless steel
Dimensions: 34mm + 26mm
Calibre: Quartz
Crystal: Plexiglass
Bracelet: Leather with steel buckle
Accessories: Box
€ 200 - 220

A new old stock couple watch set by Movado. Actually not working; battery needs to be replaced (the functioning of the quartz movements is not guaranteed as the conditions of sale, assistance or repair may be required).



669.

DIOR D IN METAL - From 2020

Year: 2020
 Material: Metal and strass
 Dimensions: 37mm
 Calibre: Automatic
 Crystal: Mineral
 Bracelet: Metal
 Accessories: Box and guarantee
 € 900 - 1.600

An elegant D from Dior, currently working.



670.

DOXA DRESS WATCH IN YELLOW GOLD - From 1960

Reference N° 9833 80
 Serial N° 1090908
 Year: 1960
 Material: 18K Yellow gold
 Weight: 30g
 Dimensions: 33mm
 Calibre: Manual
 Crystal: Plexiglass
 Bracelet: Leather with steel buckle

Lot sold with no reserve price.
 € 200 - 400

A very fine and elegant dress watch by Doxa; Currently working.

SESSION UNIQUE - LOTS 501 - 525

 501. Cartier Tank Mini	 502. Chopard Diamond Dial	 503. Patek Philippe Lady	 504. Zenith Lady Bracelet	 505. Ebel Lady Bracelet
 506. Vacheron Constantin Lady Bracelet	 507. Vacheron Constantin Lady Bracelet	 508. Fried Lady Bracelet	 509. Rolex Lady Bracelet	 510. Vacheron Constantin x Belgaert x Serpenti
 511. Breguet & Mercier Lady Bracelet	 512. Breguet & Mercier Lady Bracelet	 513. Lot of 5 Lady Bracelets	 514. Jaeger-LeCoultre Reverso	 515. Jaeger-LeCoultre Reverso Femmina
 516. Rolex Datejust Ref. 56285	 517. Rolex Datejust Ref. 6032	 518. Rolex Submariner	 519. Rolex Gold Bracelet 20mm	 520. Rolex Bracelet 18mm
 521. Rolex Daytona Bezel	 522. Rolex Daytona Bezel	 523. Rolex Daytona Dial	 524. Rolex Daytona MOP Dial	 525. Rolex Daytona Dial







TÉLÉCHARGER LE CATALOGUE COMPLET
BROWSE THE FULL E-CATALOGUE

INSCRIVEZ-VOUS POUR ENCHÉRIR EN LIGNE
REGISTER TO BID ONLINE

www.winneresgroup.com

WANNENES
PROPERTIES

VILLA PALLADIO

Sorge in posizione dominante su Roma, in Via della Camilluccia. Un angolo della città particolarmente esclusivo e tranquillo.

La Villa, di grande impatto e superba architettura, risale alla fine degli anni '50 del secolo scorso ed è immersa in un giardino prevalentemente pianeggiante di gusto squisitamente romantico con fontane, giochi d'acqua e colonnati.

La villa fu commissionata da Jean Louis Marcoli, Conte, Diplomatico italo svizzero di carriera, appassionato di cavalli.

La proprietà venne commissionata dal Conte all'Archistar, Tomaso Buzzi.

Scopri di più



+39 011 0816100

properties@wannenesgroup.com

CONDITIONS GÉNÉRALES DE VENTE - WANNENES MONACO

1. CONDITIONS GÉNÉRALES

1.1 La participation à la vente aux enchères, en tant qu'acheteur ou vendeur, implique l'acceptation totale et inconditionnelle des conditions de vente énoncées dans les catalogues de vente aux enchères de WANNENES - ART CONTACT SARL et publiées sur le site web de WANNENES (ci-après ART CONTACT ou maison de vente aux enchères). En cas de modification des conditions susmentionnées, la formulation en vigueur ratione temporis au moment de l'adjudication prévaut, pour l'acheteur, ou de l'octroi du mandat de vente, pour le vendeur.

Les acheteurs et les vendeurs sont invités à lire attentivement cette section contenant les conditions d'achat des lots mis en vente.

1.2 Les marchandises peuvent être vendues par lots ou individuellement, à la seule discrétion d'ART CONTACT. Les ventes aux enchères se déroulent dans des locaux ouverts au public et/ou en ligne par ART CONTACT, qui agit uniquement en tant que mandataire au nom et dans l'intérêt de chaque vendeur (dont le nom est inscrit dans tous les registres prévus par la loi). Les effets de la vente affectent directement l'acheteur et le vendeur. ART CONTACT décline toute responsabilité à l'égard de l'adjudicataire, du vendeur ou de tout autre tiers en général.

2. AVANT LA VENTE AUX ENCHÈRES

2.1 - ESTIMATIONS

A côté de chaque description des lots dans le catalogue se trouve une estimation indicative pour les acheteurs potentiels. Cette estimation ne constitue pas une promesse de l'acheteur. Tous les lots, en fonction de l'intérêt du marché, peuvent atteindre des prix supérieurs ou inférieurs aux valeurs d'estimation indiquées. Les estimations du prix de vente de base, figurant sous la description de chaque article du catalogue, sont nettes de tous frais annexes tels que, par exemple, les frais acheteur, la TVA, les taxes, etc. Les délais d'impression typographique du catalogue nécessitant que les prix estimés soient déterminés longtemps à l'avance, ceux-ci peuvent être sujets à des modifications, de même que la description du bien. Toute modification sera communiquée par le commissaire-priseur avant le début des enchères sur l'article concerné, étant entendu que le lot ne sera adjugé que si le prix de réserve est atteint.

2.2 - RÉSERVE

Le prix de réserve correspond au prix minimum confidentiel convenu entre ART CONTACT et le vendeur en dessous duquel le lot ne sera pas vendu. Les lots proposés sans réserve sont signalés dans le catalogue par une estimation en rouge ou l'indication O.L. et sont adjugés au mieux-disant indépendamment des estimations publiées.

2.3 - EXPOSITION

Lorsqu'elle est annoncée, chaque vente aux enchères est précédée d'une exposition ouverte gratuitement au public, dont les horaires sont indiqués dans les premières pages des catalogues et sur le site Internet de WANNENES ART CONTACT. L'objectif de l'exposition est de permettre à tous les acheteurs de procéder à un examen approprié des lots mis en vente et de vérifier toutes leurs qualités, telles que l'authenticité, l'état, la matière, etc. Dans le cas de ventes aux enchères organisées exclusivement en ligne sans exposition, les experts de ART CONTACT sont à la disposition des acheteurs potentiels pour répondre aux demandes de rapport d'état et envoyer d'éventuelles photographies supplémentaires, étant entendu que l'avis des experts n'est pas contraignant et ne remplace pas le jugement final des acheteurs.

2.4 - ÉTAT DE CONSERVATION

Les biens sont vendus dans leur état actuel. Nous conseillons donc aux acheteurs potentiels de s'assurer de l'état de conservation et de la nature des lots en les visionnant avant la vente. Les experts seront heureux de fournir des rap-

ports d'information sur l'état des biens. Les descriptions dans les catalogues représentent uniquement l'opinion des Experts et peuvent faire l'objet d'éventuelles révisions, qui seront toutefois communiquées au public lors de la vente aux enchères.

2.5 - ACHAT DE MONTRES

Les descriptions des montres du catalogue, qu'il s'agisse de montres de poche, de montres-bracelets, domestiques ou autres, y compris leur état de conservation et les restaurations éventuelles, sont fournies à titre indicatif pour les acheteurs potentiels, mais ne peuvent en aucun cas être considérées comme exhaustives. Même le rapport d'état, qu'ART CONTACT enverra à la demande de l'acheteur potentiel, n'est pas complet et pourrait ne pas indiquer les défauts ou les restaurations. Ces rapports d'état sont établis par nos experts après une analyse réelle des pièces, mais sur une base subjective et ne constituent en aucun cas une déclaration ou une garantie pouvant remplacer un examen direct par les personnes intéressées par l'achat.

Toutes les montres doivent donc être examinées au préalable par l'acheteur potentiel afin de s'assurer de leur état, tant sur le plan esthétique que sur le plan mécanique et fonctionnel. Les lots sont vendus dans leur état actuel et l'absence d'indication d'un défaut ou d'une restauration n'implique pas qu'un tel défaut ou une telle restauration ne puisse pas exister. En tant que biens de nature mécanique et utilitaire, les montres sont par nature des objets qui ont été utilisés et entretenus, et le cas échéant réparés, au cours de leur vie : elles sont analysées par les Experts lors de la préparation de la vente aux enchères, mais la Maison de Ventes n'assume aucune garantie quant à leur état de fonctionnement, à la présence de pièces non originales ou à des restaurations.

Dans le cas des montres-bracelets déclarées étanches par le fabricant, leur examen a nécessité leur ouverture : ART CONTACT suggère donc à l'acheteur, avant de les utiliser dans l'eau, de les confier à un centre de service qualifié pour en faire vérifier l'étanchéité. Dans le cas des mouvements à quartz, aucune information n'est donnée quant à l'état de fonctionnement si la pile interne est trouvée déchargée lors de l'inspection par les Experts. Sauf indication contraire, les documents relatifs aux horloges ne sont pas présents. Sauf indication contraire, les bretelles et les bracelets doivent être considérés comme n'étant pas d'origine. Les bracelets, étuis ou boîtiers ou autres parties des boîtiers en matière organique, s'il y en a, sont présentés assemblés au stade de la prévention uniquement à des fins de présentation : les acheteurs potentiels sont conscients que l'importation à l'étranger de matériaux provenant d'espèces menacées, comme, à titre d'exemple, l'écaille de tortue et l'ivoire, est soumise à la réglementation internationale de la CITES. Il est donc impératif que les acheteurs potentiels s'informent correctement, dès le début, de ces restrictions, s'ils ont l'intention d'enchérir sur un lot contenant, même partiellement, de tels matériaux. Les indications de poids, si elles figurent dans le catalogue ou dans le rapport d'état, doivent être considérées comme brutes et purement indicatives, de même que les mesures des boîtes et la nature et le caratage des pierres précieuses ou autres matériaux de valeur présents.

2.6 - ACHAT DE VINS ET SPIRITUEUX

Les vins et spiritueux sont décrits avec précision dans la mesure où ils peuvent être vérifiés lors de la publication des catalogues, mais les acheteurs potentiels doivent tenir compte des variations naturelles des niveaux, de l'état des caisses, des étiquettes, des bouchons et des vins ou spiritueux mêmes. Aucun retour ne sera accepté.

2.7 - ACHAT DE TABLEAUX

En participant à la vente aux enchères, l'acheteur exonère expressément la Maison de vente de toute responsabilité et/ou garantie en ce qui concerne l'état de conservation des cadres des œuvres jusqu'au moment de la livraison à l'acheteur. En particulier, le participant déclare être pleinement informé que le cadre n'a constitué ni un élément de formation du prix ni un élément de décision pour l'achat, sa présence ou non étant considérée comme non pertinente. Par dérogation partielle à ce qui précède, la Maison de vente aux enchères n'est responsable de l'état de conservation du cadre que si elle a fourni, à la suite d'une demande formelle, un rapport d'état (dans les limites de l'omission de tout défaut important qui entraînerait une modification

significative de la valeur du tableau même).

L'acheteur exonère aussi expressément la maison de vente de toute responsabilité et garantie en ce qui concerne la coloration des tableaux, qui peut différer de celle perçue lors d'une exposition en direct. Il est recommandé, dans tous les cas, de demander des rapports d'état et des photos supplémentaires à celles déjà présentes sur le site et dans le catalogue.

2.8 - ATTRIBUTION ET TERMINOLOGIE

Les déclarations concernant l'auteur, l'attribution, l'origine, la période, la provenance et l'état des lots figurant dans le catalogue doivent être considérées comme l'opinion personnelle des experts et des spécialistes qui ont pu être consultés et non comme un fait avéré.

TITIEN : à notre avis, l'œuvre est l'œuvre de l'artiste.

ATTRIBUÉ À TITIEN : à notre avis, l'œuvre est probablement l'œuvre de l'artiste, mais il n'y a pas de certitude.

ATELIER DE TITIEN : l'œuvre, à notre avis, est d'un peintre inconnu de l'atelier de l'artiste qui l'a peut-être exécutée sous sa supervision.

CERCLE DE TITIEN : l'œuvre, à notre avis, est d'un peintre inconnu mais reconnaissable, lié à l'artiste susmentionné, mais pas nécessairement par une relation d'ancien élève.

STYLE DE/DISCIPE DE TITIEN : à notre avis, l'œuvre est celle d'un peintre, contemporain ou quasi-contemporain, qui travaille dans le style de l'artiste, sans être nécessairement lié à lui par une relation d'apprentissage.

MANIÈRE DE TITIEN : à notre avis, l'œuvre a été exécutée dans le style de l'artiste, mais à une époque plus tardive.

COPIE DE TITIEN : à notre avis, l'œuvre est une copie d'un tableau de l'artiste.

EN STYLE : l'œuvre, à notre avis, est dans le style mentionné, mais d'une époque plus tardive.

SIGNÉ - DATÉ - INSCRIT : à notre avis, la signature et/ou la date et/ou l'inscription sont de la main de l'artiste.

AVEC SIGNATURE - DATE - INSCRIPTION : A notre avis, la signature et/ou la date et/ou l'inscription ont été ajoutées

Les dimensions indiquées sont d'abord la hauteur, puis la largeur.

2.9 - AUTRES AVERTISSEMENTS

Tous les lots contenant des composants électriques sont proposés à la vente comme étant non fonctionnels et devant être entièrement révisés. ART CONTACT se dégage de toute responsabilité à l'égard de quiconque en cas de mauvaise utilisation des lots vendus ou de non-respect des avertissements. Nous vous rappelons qu'il est nécessaire, avant d'utiliser les lots, de faire vérifier toutes les parties électriques par du personnel expérimenté et de confiance. L'indication « ...années... » ou la date figurant dans la description du lot indiquent la période de début de production du lot en question, sauf indication contraire. Les images descriptives figurant dans le catalogue et sur le site web peuvent ne pas représenter fidèlement les lots proposés aux enchères. La Maison de vente aux enchères recommande toujours de voir les œuvres directement avant d'enchérir. S'il n'est pas possible de voir les lots en personne, un Rapport d'état peut être demandé pour obtenir des images supplémentaires et détaillées des objets.

2.10 - UTILISATION D'IMAGES

Les acheteurs et les vendeurs autorisent expressément ART CONTACT à utiliser librement et gratuitement les photographies représentant les lots faisant l'objet de la vente aux enchères à quelque fin que ce soit, à l'exclusion et/ou sous réserve, y compris, à titre d'exemple mais sans s'y limiter, la publicité, la diffusion via internet et/ou tout autre moyen, la publication dans des magazines et/ou revues, qu'ils soient édités par eux-mêmes ou par des tiers.

3. COMMENT PARTICIPER À LA VENTE

3.1 - PARTICIPATION À LA VENTE AUX ENCHÈRES

La participation aux enchères peut se faire par la présence dans la salle, en ligne ou par des enchères écrites ou téléphoniques, que WANNENES ART CONTACT se fera un plaisir d'exécuter au nom des acheteurs potentiels. Veuillez noter que le service est gratuit et qu'aucune responsabilité ne peut être at-

tribuée à la Maison de ventes aux enchères, qui n'est pas responsable des enchères non exécutées par inadvertance ou des erreurs dans leur exécution. ART CONTACT peut demander aux nouveaux acquéreurs des références bancaires adéquates.

3.2 - FORMULAIRE DE PARTICIPATION

Afin de garantir la transparence de la vente aux enchères, toutes les personnes souhaitant enchérir doivent remplir un formulaire de participation contenant des données personnelles et des références bancaires. ART CONTACT se réserve le droit de vérifier les références fournies et de refuser la participation de personnes indésirables à la vente aux enchères. Lors du renseignement, ART CONTACT remet une carte d'identification numérotée, qui doit être présentée au commissaire-priseur pour formuler les offres. Les personnes qui choisissent de participer aux enchères en ligne devront créer leur compte WANNENES plus, remplir les formulaires en ligne appropriés et fournir toutes les informations requises. Nonobstant ce qui précède, ART CONTACT peut accepter de telles enchères si un montant en fidéicommis égal à la valeur du lot demandé, plus la commission, les frais et les dépenses, est déposé. En tout état de cause, dès l'adjudication, l'adjudicataire communique immédiatement ses coordonnées personnelles et fiscales complètes.

4. PENDANT LA VENTE AUX ENCHÈRES

4.1 - ENCHÈRES DANS LA SALLE

Pour participer dans la salle de vente, les acheteurs potentiels doivent s'inscrire et obtenir le numéro de participation approprié en remplissant le formulaire de participation à la vente aux enchères et en fournissant une pièce d'identité et un justificatif de domicile. Tous les lots vendus seront facturés au nom et à l'adresse indiqués lors de l'attribution du numéro de participation et ne pourront être transférés à d'autres noms et adresses. Si un acheteur potentiel souhaite participer au nom et pour le compte d'un tiers, il doit en informer la direction d'ART CONTACT avant la vente aux enchères, qui doit l'autoriser expressément par écrit.

4.2 - OFFRES ÉCRITES ET OFFRES TÉLÉPHONIQUES

ART CONTACT peut accepter des mandats d'achat (par écrit ou par téléphone) en enchérissant par l'intermédiaire du commissaire-priseur, en concurrence avec les participants dans la salle. En cas d'enchères identiques, l'enchère écrite prévaut sur l'enchère orale. Pour participer aux enchères écrites et téléphoniques, les acheteurs potentiels doivent remplir le formulaire d'enchère approprié publié dans les catalogues et/ou sur le site web wannenegrup.com et le soumettre à la Maison de vente aux enchères au moins 7 heures avant le début de la vente aux enchères. Les enchères doivent être en euros et sont nettes des frais acheteur et des charges fiscales prévues par la législation en vigueur, qui doivent par conséquent être ajoutés. Les enchères écrites seront exécutées au nom du soumissionnaire au prix le plus bas possible en tenant compte du prix de réserve et des autres enchères. Les enchères écrites faites sur les lots non réservés (marqués de l'estimation en rouge ou l'indication O.L) en l'absence de surenchère seront adjugées à environ 50% de l'estimation minimale ou au montant correspondant à l'enchère, même s'il est inférieur à 50% de l'estimation minimale.

Les enchères téléphoniques seront organisées par ART CONTACT dans la limite de la disponibilité des lignes et exclusivement pour les lots dont l'estimation maximale est d'au moins 500 euros. Les conversations téléphoniques pendant la Vente aux enchères peuvent être enregistrées. Les acheteurs potentiels contactés par téléphone consentent à l'enregistrement de leurs conversations. ART CONTACT n'est en aucun cas responsable des malentendus de toute nature qui pourraient survenir lors de la connexion téléphonique.

4.3 - VENTE AUX ENCHÈRES EN LIGNE

Il est également possible de participer aux ventes aux enchères en ligne, soit en s'inscrivant dans la section appropriée du site web de WANNENES ART CONTACT et en s'inscrivant à la vente aux enchères correspondante, soit par le biais de plateformes externes. Lorsque la séance de vente aux enchères est ouverte, il est possible d'entrer dans la salle en ligne et soumettre les enchères. ART

CONTACT n'est en aucun cas responsable des malentendus de toute nature pouvant survenir lors de la connexion, l'adjudication prononcée par le commissaire-priseur et transcrite dans son registre approprié faisant toujours foi.

4.4 - ADJUDICATION

Les objets sont vendus/attribués au meilleur offrant et au comptant. Le coup de marteau indique l'adjudication du lot, l'acheteur assumant alors l'entière responsabilité du lot. En plus du prix d'adjudication, l'acheteur paiera à ART CONTACT les frais acheteur et les charges prévues par la législation en vigueur. En cas de contestation entre plusieurs adjudicataires, le commissaire-priseur, à sa seule discrétion, remet le bien en vente, qui peut être adjugé à nouveau lors de la même adjudication ; dans tous les cas, les adjudicataires qui ont soulevé des contestations restent liés par l'enchère précédemment portée qui a donné lieu à la nouvelle adjudication. Si aucune nouvelle adjudication n'est effectuée, le Commissaire-priseur, à sa seule discrétion, annoncera qui est considéré comme l'adjudicataire. Toute cession des lots adjugés à des tiers sera inopposable à ART CONTACT, qui considérera l'adjudicataire comme le seul responsable du paiement. La participation à la vente aux enchères au nom et pour le compte de tiers ne peut être acceptée par ART CONTACT qu'après le dépôt dans les bureaux de la maison de vente - au moins trois jours avant la vente aux enchères - des références bancaires appropriées et d'une procuration notariée ad negotia.

4.5 - PRÉSENCE DES ENCHÈRES

Dans le cas de deux enchères écrites identiques, qui n'ont pas fait l'objet d'une surenchère par des offres en salle ou par téléphone, ART CONTACT considérera l'enchère soumise en premier comme étant l'enchère retenue. ART CONTACT se réserve le droit de refuser les enchères d'acheteurs inconnus et/ou indésirables, à sa seule discrétion.

4.6 - POUVOIRS DE LA MAISON DE VENTE AUX ENCHÈRES ET COMMISSAIRE-PRISEUR

ART CONTACT se réserve le droit de retirer un lot de la vente aux enchères. Le commissaire-priseur dirige les enchères en commençant par l'enchère qu'il juge la plus appropriée, en fonction de la valeur du lot présenté et des enchères concurrentes. Le commissaire-priseur peut enchérir consécutivement ou en réponse à d'autres enchères jusqu'à ce que le prix de réserve soit atteint. Le commissaire-priseur a le droit, pendant la vente aux enchères, de combiner et/ou de séparer les lots et de modifier l'ordre de vente. Le commissaire-priseur peut, à sa seule discrétion, retirer les lots qui n'atteignent pas le prix de réserve convenu entre ART CONTACT et le vendeur.

5. FRAIS ACHETEUR ET DROIT DE SUITE

5.1 - FRAIS ACHETEUR

En dessus du prix d'adjudication, l'adjudicataire s'engage à payer à ART CONTACT, pour chaque lot, des frais acheteur à hauteur de 22,5% hors TVA (27 % TTC) du prix d'adjudication.

La spécialité des Voitures et motos de sport et de collection fait exception: 12,5 % hors taxes (15 % TTC) du prix d'adjudication.

Les lots en provenance de pays non membres de l'UE, indiqués par **, sont soumis à des taxes d'importation. Ayant opté pour le régime de la marge, ART CONTACT n'émettra aucun document relatif à la TVA. La TVA sur les commissions et les frais liés à l'importation peut être remboursée à l'adjudicataire sur présentation d'une preuve de l'exportation en dehors de l'UE.

5.2 - DROIT DE SUITE

Les articles 11-1 et suivants de la loi n° 491 du 24 novembre 1948, modifiée en dernier lieu par la loi n° 1526 du 1er juillet 2022, régissent le « droit de suite », à savoir le droit de l'auteur (vivant ou décédé depuis moins de 70 ans) d'œuvres manuscrites, graphiques ou plastiques, ou de ses ayant droit, de percevoir un pourcentage du prix de vente des originaux de ses œuvres à l'oc-

casion des ventes postérieures à la première. Ce droit est à la charge du Vendeur. Toutefois, ce droit ne peut excéder 12 000,00 € par pour chaque lot.

Le droit de suite s'applique aux ventes soumises à la TVA dépassant 750 €. La revente de l'œuvre dans les trois ans suivant sa première cession par l'auteur est exonérée du droit de suite si le prix de vente est inférieur à 10 000 €.

Le montant du droit à payer est fixé comme suit :

- 3% pour la partie du prix de vente jusqu'à 50 000 €
- 2% pour la partie du prix de vente comprise entre 50 000,01 et 200 000 €
- 0,5% pour la partie du prix de vente comprise entre 200 000,01 et 350 000 €
- 0,25% pour la partie du prix de vente comprise entre 350 000,01 et 500 000 €
- 0,15 % pour la partie du prix de vente supérieure à 500 000 €

Les frais de suivi facturés au vendeur seront payés par ART CONTACT selon les modalités fixées par l'arrêté ministériel n° 87-2007 du 12 janvier 1987.

6. RESPONSABILITÉ

ART CONTACT agit exclusivement en tant que mandataire des vendeurs et décline toute responsabilité quant à la description des objets dans les catalogues et dans toute autre publication illustrative. Toutes les descriptions des biens doivent être considérées comme purement illustratives et indicatives et ne doivent pas créer d'attentes de quelque nature que ce soit chez les adjudicataires. La vente aux enchères est précédée d'une exposition des biens afin de permettre un examen adéquat des biens par les candidats acquéreurs, de sorte que ces derniers puissent, sous leur pleine et entière responsabilité, vérifier toutes les qualités, telles que, par exemple, l'authenticité, l'état de conservation, l'espèce, la matière des biens mis aux enchères. Après l'adjudication, personne ne peut s'opposer à ART CONTACT ou aux vendeurs en raison du manque de qualité des marchandises adjugées. ART CONTACT et ses employés et/ou collaborateurs ne donnent aucune garantie d'authenticité et/ou autre. Toutes les indications sur le carat et le poids des métaux précieux ou des pierres précieuses, ainsi que sur les leurs marques correspondantes, sont purement indicatives. ART CONTACT n'est pas responsable des erreurs ou des falsifications réalisées avec art. Malgré le recours éventuel à des experts externes, ART CONTACT ne garantit pas l'exactitude ou l'authenticité de ces indications.

7. PAIEMENT

7.1 - Le paiement intégral du prix d'adjudication, des frais d'adjudication et de tous les autres frais accessoires doit être effectué dans un délai de 10 jours ouvrables à compter de la date de la vente aux enchères, dans la monnaie ayant cours légal dans le pays où la vente aux enchères a eu lieu:

A. En espèces, conformément à la législation en vigueur dans la Principauté de Monaco

B. Par virement bancaire à l'ordre de ART CONTACT SARL : Banque : Société Générale IBAN : MC58 3000 3023 0800 0200 0551 238 SWIFT BIC : SOGEMCM1

C. Certaines cartes de crédit/débit sont acceptées, avec un supplément sur le montant total dû. Veuillez contacter la Maison de ventes aux enchères pour plus d'informations.

ART CONTACT a la possibilité, sous réserve d'accord avec le vendeur, d'offrir aux acheteurs qu'elle considère comme fiables la possibilité de payer les lots achetés en différé. Les acheteurs potentiels souhaitant bénéficier d'un paiement différé doivent contacter la direction de ART CONTACT avant la vente.

7.2 - En cas de non-paiement, sans préjudice du droit d'obtenir réparation d'un dommage encore plus important, ART CONTACT peut : a) restituer le lot au vendeur défaillant et exiger de l'acheteur défaillant le paiement de la commission perdue ; b) agir pour obtenir l'exécution forcée de l'obligation d'achat ; c) vendre le lot de gré à gré, ou dans des ventes aux enchères ultérieures,

en tout cas au détriment de l'acheteur défaillant, en retenant les acomptes éventuels à titre de pénalité. Si le lot reste sous la garde d'ART CONTACT, ce sera aux risques et aux frais de l'adjudicataire et du non-vendeur, conjointement et solidairement.

7.3 - Dans tous les cas, ART CONTACT peut convenir avec les adjudicataires de différentes formes de paiement, de dépôt, de vente de gré à gré, d'assurance des marchandises et/ou de la fourniture de tout autre service nécessaire au meilleur déroulement possible de l'opération.

8. LIVRAISON ET STOCKAGE DES LOTS

8.1 - RETRAIT DES LOTS

L'adjudicataire, après avoir payé toutes les sommes dues, enlèvera les lots achetés dans un délai de 15 jours ouvrables à compter de la date de la vente aux enchères, à ses seuls risques, soins et frais, en respectant le calendrier prévu à cet effet par ART CONTACT. Lors du retrait du lot, l'acheteur doit fournir à ART CONTACT une pièce d'identité. Si l'acheteur désigne une tierce personne pour récupérer les lots déjà payés, cette personne doit être munie d'une procuration écrite de l'acheteur et d'une photocopie de la pièce d'identité de l'acheteur. Les lots ne seront remis à l'acheteur ou à la personne déléguée qu'après le paiement total effectué.

8.2 - STOCKAGE

Si l'adjudicataire ne retire pas les lots achetés dans le délai susmentionné, ART CONTACT les stockera, aux risques et aux frais de l'adjudicataire, dans les locaux de la vente aux enchères pendant cinq jours ouvrables supplémentaires. Après ce délai, ART CONTACT peut faire transporter les biens, toujours aux risques et aux frais de l'adjudicataire, dans tout dépôt ou autre entrepôt d'ART CONTACT, se libérant à l'égard de l'acheteur avec la simple notification du lieu où les biens sont entreposés. Ceci sans préjudice du fait que pour retirer le lot, l'adjudicataire devra payer, en plus du prix correspondant avec les accessoires, le remboursement de tous les autres frais.

En cas de retard dans l'enlèvement des lots achetés, la maison de vente aux enchères se réserve le droit de facturer, à partir du 16e jour ouvrable suivant la date de la vente aux enchères, des frais de stockage (par mois ou fraction de mois), dont la liste figure ci-dessous à titre indicatif :

- 100 € + TVA pour le mobilier
- 50 € + TVA pour les peintures
- 25 € + TVA pour les objets d'art et tous les autres lots en général

Les frais de stockage pour les voitures et les motos sont spécifiquement indiqués dans les catalogues correspondants.

9. EXPÉDITION ET EXPORTATION

9.1 - EXPÉDITION DES LOTS

Le personnel de ART CONTACT se fera un plaisir de se charger de l'expédition des lots achetés selon les instructions données par écrit par les acheteurs et suite au paiement intégral de la part de ces derniers. L'expédition se fera aux risques et aux frais de l'acheteur, qui dégagera par écrit ART CONTACT de toute responsabilité à cet égard. Notre personnel est également à votre disposition pour une estimation et des conseils sur toutes les méthodes d'expédition et d'assurance des lots.

9.2 - EXPORTATION DES BIENS CULTURELS

Des certificats d'exportation pourront être nécessaires pour certains achats et, dans certains cas, une autorisation douanière pourra être également requise. Il est de la responsabilité de l'adjudicataire de les demander et les obtenir. L'État français a faculté d'accorder ou de refuser un certificat d'exportation au cas où le lot est réputé être trésor national. ART CONTACT n'assume aucune responsabilité du fait des décisions administratives de refus de certificats pouvant être prises. Si une licence d'exportation est requise, l'intervention

d'un transitaire est nécessaire afin de traiter cette démarche ainsi que l'expédition du bien culturel et l'acheteur devra se charger du choix de ce transitaire.

9.3 - DROIT DE PRÉEMPTION

L'État monégasque peut exercer sur toute vente publique d'œuvre d'art un droit de préemption sur les biens proposés à la vente dans la Principauté de Monaco. L'État se substitue au dernier enchérisseur. La décision de préemption est portée à la connaissance de l'huissier aussitôt après le prononcé de l'adjudication. Elle est mentionnée au procès-verbal de celle-ci. Elle doit être confirmée dans un délai de quinze jours. En l'absence de confirmation à compter de ce délai, l'objet revient au dernier enchérisseur.

9.4 - RESTRICTIONS POSSIBLES

Chacun est évidemment tenu de se conformer aux lois en vigueur dans l'État où la vente aux enchères a eu lieu. En particulier, ART CONTACT n'assume aucune responsabilité en ce qui concerne les restrictions à l'exportation des lots attribués, et/ou les licences et/ou permis que l'adjudicataire pourrait avoir à demander en vertu de la législation en vigueur. L'adjudicataire ne peut prétendre à aucun remboursement, ni de la part du vendeur, ni de la part d'ART CONTACT, au cas où l'État exercerait son droit de préemption ou tout autre droit qui lui est réservé. Les honoraires dus dans le cadre d'une adjudication qui a été annulée par la suite en raison d'un refus de permis d'exportation pour le lot sont en tout cas dus par le donneur d'ordre à ART CONTACT, même si ce refus résulte du fait que le donneur d'ordre n'a pas informé ART CONTACT de l'existence d'un permis d'exportation délivré par l'autorité compétente à la demande du donneur d'ordre et/ou de tierces parties.

10. CONTESTATIONS

En cas de contestations fondées et acceptées par ART CONTACT à la suite de la vente d'objets contrefaits, la maison de vente aux enchères peut, à sa discrétion, déclarer la vente nulle et non avenue et, si la demande en est faite dans les formes et limites de la loi, révéler le nom du vendeur à l'adjudicataire. L'acheteur ne peut faire usage de cet article que s'il a notifié à ART CONTACT, conformément à la loi, la contestation avec les preuves correspondantes dans le délai de 15 jours après l'adjudication. En tout état de cause, à la suite d'une réclamation acceptée, l'adjudicataire n'a le droit de recevoir que ce qui a été payé pour l'adjudication contestée, sans ajout d'intérêts ou de toute autre somme à quelque titre que ce soit.

11. ACCEPTATION DES CONDITIONS DE VENTE

Les présentes conditions générales de vente sont automatiquement acceptées lors de la signature du formulaire de participation visé à l'article 3.2 et en tout état de cause par toutes les personnes participant à la vente et sont disponibles à toute personne qui en fait la demande. Le Tribunal de la Principauté de Monaco est compétent en cas de litige.

12. VIE PRIVÉE

ART CONTACT s'engage à préserver la confidentialité des informations nominatives fournies par les clients dans le cadre de participation aux enchères, demandes d'information ou leur abonnement aux Newsletters. S'appliquent les dispositions de la loi no 1.165 du 23/12/1993.

GENERAL CONDITIONS OF SALE - WANNENES MONACO

1. GENERAL TERMS

1.1 Taking part in an Auction, both as Buyer and Seller, implies the entire and unconditional acceptance of the Conditions of Sale outlined in the catalogues of WANNENES ART CONTACT SARL and published on the website of WANNENES (hereinafter ART CONTACT or Auction House). In the event of a change in the aforementioned conditions, the wording in force *ratione temporis* at the time of the auction itself, for the Buyer, or of the assignment of the mandate to sell, for the Seller, will prevail.

Bidders and Sellers are required to read carefully this section containing the purchase terms of the lots for sale.

1.2 The objects may be sold in lots or individually according to the final opinion of ART CONTACT. The Auctions will be held in premises that are open to the public and/or online by ART CONTACT which acts simply as agent in the name and interests of each Seller (the name of the said Seller is written in all the Registers required by Law). The sale directly concerns the Purchaser and the Seller. ART CONTACT does not assume any responsibility in relation to the Purchaser, the Seller or any third party concerned.

2. BEFORE THE AUCTION

2.1 - ESTIMATES

Beside each lot description in the catalogue there is an indication of the Estimate for potential Buyers. This Estimate cannot constitute any reliance on the Buyer. All the lots, depending on market interest, may achieve prices that are either superior to or inferior to the indicated Estimates. The Estimates relative to the initial sale price, indicated beneath the description of each item in the catalogue, are intended as net and do not include, for example, the commissions (Buyer's Premium), taxes etc. Since the printing time of the catalogue requires price Estimates in advance, these latter may be subject to change, as may also the description of the items. Each and every change will be communicated by the Auctioneer before the beginning of the Auction in relation to each item concerned. The lot/s will, however, only be sold upon reaching the reserve price.

2.2 - RESERVE

The reserve price corresponds to the minimum price agreed upon between ART CONTACT and the Seller, beneath which the lot will not be sold. Lots offered without reserve are indicated in the catalogue with the Estimate in red color or with the wording O.L. These lots are sold to the highest bidder independently of the published Estimates.

2.3 - VIEWING BEFORE THE AUCTION

Where communicated, each Auction is preceded by a free open viewing. Opening times are shown in the first pages of each catalogue and on the WANNENES ART CONTACT website. The viewing enables all Buyers to undertake an appropriate examination of the lots for sale and to verify all aspects related to the lot, such as authenticity, state of preservation, materials, etc. In case of auctions that take place exclusively online, ART CONTACT Experts are available to send Condition Reports and additional photographs to potential Buyers, being understood that the opinion of our Experts is not binding and does not replace the judgment of the Buyers.

2.4 - CONDITION OF THE LOTS

The lots are sold in their current state. We recommend, therefore, that potential Buyers check the condition of the lot/s, as well as the type of lot/s being offered, before the Sale. The Experts will be happy to provide upon request Con-

dition Reports on the state of preservation. The descriptions in the catalogues merely represent the opinion of the Experts and may be subject to further revisions that will, in due course, be given to the public during the Auction.

2.5 - WATCHES AND CLOCKS

The descriptions in the catalogue for watches and clocks in relation to preservation and/or restorations are given as guidelines to prospective Buyers, however they may under no circumstance be considered exhaustive. The Condition Reports which ART CONTACT may send, on request of a prospective Buyer, do not reflect an exhaustive description and some restorations or imperfections may not be mentioned. Condition Reports are statements of opinion given by the Experts and are purely subjective and do not constitute a guarantee that may substitute a direct examination by the prospective Buyer. Prospective Buyers should personally inspect the condition of each lot in order to ascertain its effective state, both from the technical and the aesthetic points of view. Lots are sold in their present state and the fact that an imperfection or a restoration is not mentioned does not imply that the imperfection or restoration does not exist. Watches, due to their mechanical and functional nature, are normally used and kept up and possibly repaired, in the course of their existence: they are examined by the Experts prior to the sale, but the Auction House gives no guarantee that they are in working order, free of repairs or in the presence of non-original parts.

Wristwatches in water-resistant cases have been opened to examine their movements: therefore, ART CONTACT suggests that such a watch be controlled by an authorized dealer before using the same in conditions where water is present. As concerns quartz movements, no information is given about working order if the battery, at the moment of examination, is discharged. All documents regarding watches, if not otherwise specified, are not present. All straps and bracelets, if not otherwise specified, are not to be considered original. Straps made of organic material are associated with the watch for display purposes only: prospective Buyers are aware that the importation to Foreign Countries of materials derived from endangered or otherwise protected species (purely as an example: tortoiseshell, ivory) are subject to CITES international rules. Prospective Buyers should therefore acquire the necessary information on such restrictions prior to their participation in the sale for lots containing, even though partially, materials falling under these rules. Indications of weight, if included in the Condition Report, are to be considered gross and purely indicative, as well as weights in carats of precious stones, indications of the nature of precious stones or other precious materials and measures of cases.

2.6 - WINES AND SPIRITS

Wines and Spirits are described with as much accuracy as can be ascertained at the time of publication of the catalogues, however potential Buyers must take into consideration any natural variations in levels, conditions of the cases, labels, corks and the wines or spirits themselves. No returns will be accepted.

2.7 - PAINTINGS

By participating in the auction, the Buyer expressly releases the Auction House from any liability and/or warranty in relation to the state of preservation of the frames of the artworks until the time of delivery to the Buyer. In particular, the participant declares to be perfectly informed that the frame was neither an element for the formation of the price nor a decision-making element for the purchase, considering its presence, or its lack, irrelevant. The Auction House will be responsible for the state of preservation of the frame only if it has provided, following a formal request, a Condition Report (within the limits of the omitted indication of any significant deficiencies that determine a significant change in the value of the painting itself).

The Buyer expressly exempts the Auction House from any liability and guarantee whatsoever in relation to the colors of the paintings, which may be different from those perceived by a direct view. Anyhow, we suggest to ask for a Condition Report and photos in addition to those already present on the website and in the catalogue.

2.8 - TERMINOLOGY AND ATTRIBUTION

Statements concerning the author, attribution, origin, period, provenance and conditions of the lot/s in the Catalogue are to be considered as the personal opinion of the Experts and Scholars who may have been consulted and do not necessarily represent fact.

TITIAN: in our opinion, the work is the work of the artist.

ATTRIBUTED TO TITIAN: in our opinion, the work is probably by the artist, but there is no absolute certainty.

TITIAN'S WORKSHOP/STUDIO: in our opinion, the work is made by an unknown painter working in the artist's workshop/studio who may or may not have undertaken the painting under the artist's supervision.

TITIAN'S CIRCLE: in our opinion, the work is made by an unknown painter who is in some way connected or associated to the artist, although not necessarily a pupil of the artist.

STYLE OF/FOLLOWER OF TITIAN: in our opinion, the work is made by a painter who was contemporary or almost contemporary to the artist, working in the same style of the artist, without being necessarily connected to him by an artist-pupil relationship.

MANNER OF TITIAN: in our opinion, the work has been carried out in the style of the artist but subsequent to the period of the artist.

FROM TITIAN: in our opinion, the work is a copy of a painting by the artist. IN THE STYLE OF...: in our opinion, the work is in the style mentioned, however from a later period.

SIGNED-DATED- INSCRIBED: in our opinion, the signature and/or date and/or inscription are by the artist.

BEARING SIGNATURE-DATE- INSCRIPTION: in our opinion, the signature and/or date and/or inscription have been added.

The dimensions supplied are height first, followed by width..

2.9 - OTHER NOTICES

Every lot with any electric equipment is sold as "not working" and it should be totally re-conditioned. ART CONTACT is not responsible for any incorrect, wrong use of sold lots or for any non-compliance with instructions. The words "...year..." or the date quoted in the lots description indicates the beginning of production of the said lot, unless otherwise specified. The descriptive image in the catalogue and website might not faithfully represent the lots at auction. The Auction House always recommends directly viewing the lots before making any bids. In case it is not possible to have a view of the lot/s in person, prospective Buyers may request a Condition Report in order to receive additional and detailed images of the lot/s.

2.10 - USE OF IMAGES

Buyers and Sellers expressly authorize ART CONTACT to use freely and at no cost the photographs depicting the lots being auctioned for any purpose whatsoever, none excluded and/or excepted, including for example but not limited to, advertising, diffusion via internet and/or by any other means, publication in the Magazines of the Auction House or published by third parties

3. HOW TO PARTICIPATE

3.1 - TAKING PART IN THE AUCTION

Taking part in an Auction may occur by being present in the Auction Room, connected online or through written or telephone bids that ART CONTACT will be happy to execute in the name and on behalf of potential Buyers. This service is free of charge and, therefore, the Auction House bears no form of responsibility for this service. ART AUCTIONS will, therefore, not be responsible for any bids inadvertently not executed or for errors related to their execution. ART CONTACT may ask new Buyers for adequate bank references.

3.2 - PARTICIPATION FORM

In order to guarantee the highest levels of transparency during the Auction for all those intending to place bids, prospective Bidders are required to fill out a participation form with personal information and bank details. ART CONTACT reserves the right to check on the details/references provided and to refuse those who might not be welcome. Upon completion of the form, ART CONTACT will supply a numbered identification paddle which will have to be shown to the Auctioneer in order to place a bid. Customers choosing to participate online will have to create their account in WANNENES plus, fill in the relevant online forms and provide all the information requested. As a partial derogation of the above, ART CONTACT may accept Bids if a sum equal to the value of the lot/s requested, plus commissions, taxes and expenses is deposited as guarantee. In case this Bid is successful, the Buyer will communicate immediately his complete personal and tax data.

4. DURING THE AUCTION

4.1 - BIDDING IN PERSON

In order to bid in person, potential Buyers have to register and collect a bidding number by filling out the Bidding Form and providing a valid document of identification and tax code number. All lots sold will be invoiced to the name and address supplied when collecting the bidding number and they will not be able to be transferred to other names and/or addresses. Should a potential Buyer wish to bid on behalf of a third party, he/she should inform ART AUCTIONS before the beginning of the Auction, and expressly receive a written authorization.

4.2 - ABSENTEE AND TELEPHONE BIDS

ART CONTACT may accept absentee bids (by means both of written as well as telephone bids) that will be undertaken by the Auctioneer, in direct competition with those present in the Auction Room. Should there be a case of identical bids, the written bid will prevail upon the oral bid. In order to bid by written or telephone bids, potential Buyers have to fill out the Absentee Bids Form issued in the catalogue and /or in our website wannenesgroup.com and send it to the Auction House at least seven hours before the beginning of the Auction. Bids must be in euro and do not include Buyer's Premium, charges and taxation as established by the current Law, which therefore must be added. Absentee bids are carried out on behalf of the bidder at the lowest price possible in consideration of the reserve price and the other bids received by the Auction House. In the absence of a higher bid, written bids undertaken on lots without a reserve (indicated by the Estimate in red or by the letters O.L.) will be sold at approximately 50% of the lowest estimate or at the figure corresponding to the bid, even though lower than 50% of the lowest Estimate. Telephone bids are organized by ART CONTACT within the limits of phone line availability and exclusively for lots with a maximum Estimate of no less than 500 euro. Telephone calls during the Auction may be recorded. Potential Buyers who bid by telephone consent to the recording of their conversations. ART CONTACT will not be responsible in any case for any problems of any nature that may occur during the telephone connection.

4.3 - ONLINE BIDDING

It is possible to participate online, either by registering in the appropriate section of WANNENES ART CONTACT website and registering for the relevant auction, or through other external platforms. When the auction session is open, potential Buyers can enter the online room and place their bids. ART CONTACT is not responsible in any case for any problem or inconvenience of any nature that may occur during the connection, the hammer price and paddle number pronounced by the Auctioneer and transcribed in his appropriate Register will be considered as binding.

4.4 - HAMMER PRICE

Lots are sold to the highest bidder for cash. The Hammer Price indicates that a sale of a lot has been made and from that moment the Buyer assumes full responsibility for the lot. In addition to the hammer price, the Buyer shall pay ART CONTACT the auction fees (Buyer's Premium) and tax charges required by current laws. Should any disputes arise among more than one Buyers, the Auctioneer (his/her decision is final) will put the object up for sale once more so it can be purchased again in the same call. In any case, the Buyers who disputed the former sale of the item in question are still bound by the initial bid (which gave rise to the subsequent sale of the item. In the event of a new bid not being made, the Auctioneer, at his sole discretion, will communicate who is to be considered the successful Buyer of the lot/s. In case of any transfer to third parties of the purchased lot/s by the Buyer, ART CONTACT will consider the successful bidder as the sole person responsible for payment. Bidding at Auction in the name of and on behalf of third parties may be accepted only by providing ART CONTACT with adequate bank references as well as a power of attorney ad negotia at least three days before the Auction.

4.5 - BIDS PRIORITY

In case of two identical written bids, which are not exceeded by bids in the saleroom or by telephone, ART CONTACT will consider the one submitted first to be the successful one. ART CONTACT reserves the right to refuse, at its sole discretion, bids from unknown and/or unwelcome Buyers.

4.6 - AUCTION HOUSE AND AUCTIONEER'S RIGHTS

ART CONTACT reserves the right to withdraw any lot/s from the Auction. The Auctioneer opens the Auction beginning with the bid that s/he believes to be the most opportune, based upon both the value of the lot/s as well as the competing bids. The Auctioneer may make further bids or in response to other bids, until the reserve price is reached. The Auctioneer, during the Auction, may group together or separate lot/s and vary the order of the sale. The Auctioneer may – at his/her sole discretion – withdraw lot/s that do not reach the reserve price agreed upon between ART CONTACT and the Seller.

5. BUYER'S PREMIUM AND THE ARTIST'S RESALE RIGHT

5.1 - BUYER'S PREMIUM

In addition to the hammer price, the Buyers agree to pay to ART CONTACT a Buyer's Premium on the Hammer Price of each lot sold. On all lots we charge 22,5% VAT excluded (27% VAT included).

For Classic and Sports Cars auctions we charge 12,5% VAT excluded (15% VAT included) of the hammer price

5.2 - THE ARTIST'S RESALE RIGHT

Articles 11-1 et seq. of Law No. 491 of November 24, 1948, last amended by Law No. 1526 of July 1, 2022, govern the "artist resale right", namely the author's right (living or deceased for less than 70 years) of handwritten, graphic or plastic works, or from his beneficiaries, to receive a percentage of the sale price of the originals of his works on the occasion of sales subsequent to the first. This right is the responsibility of the Seller. However, this right cannot exceed €12,000.00 for each lot.

The resale right applies to sales subject to VAT exceeding €750. The resale of the work within three years following its first transfer by the author is exempt from the resale right if the sale price is less than €10,000.

The amount of duty to be paid is set as follows:
3% of the Hammer Price up to and including 50,000 euro.

2% on that part of the Hammer Price over 50,000,01 and up to and including 200,000 euro.

0,5% on that part of the Hammer Price over 200,000,01 and up to and including 350,000 euro.

0.25% on that part of the Hammer Price over 350,000,01 and up to and including 500,000,01 euro.

0.15% for the sale price above 500,000 euro.

This cost invoiced to the seller will be paid by ART CONTACT according to the terms set by Ministerial Decree No. 87-2007 of January 12, 1987.

6. RESPONSIBILITY

ART CONTACT acts exclusively as the agent for the Sellers and bears no responsibility in terms of descriptions of the items in the Catalogues or in any other illustrated publication. All the descriptions of items are intended purely as illustrative and indicative. They may not generate any form of reliance as far as the Buyer is concerned. The Auction will be preceded by a public viewing of the items in order to allow for a careful examination of the lot/s on behalf of prospective Buyers. In this way, potential Buyers will have the opportunity to and be responsible for a complete examination of all the qualities of the item/s in question: for example, the authenticity, the state of preservation, the type, the material of the items being auctioned. After the purchase, no one will be able to dispute or criticize ART CONTACT or the Sellers for the lack of any form of quality in reference to the object being auctioned. ART CONTACT and its employees/consultants will not issue any guarantee of authenticity. All indications concerning to the carats and the weight of metals or precious stones, as well as their relative marks, are merely indicative. ART CONTACT is not responsible for any potential errors or falsifications. Notwithstanding any potential reference to descriptions by experts external to the Auction House, ART CONTACT does not either guarantee the accuracy or the authenticity of such comments.

7. PAYMENT

7.1 Payment must be made in full, including Hammer Price, Buyer's Premium and any other expenses within 10 working days from the date of the Auction, in legal currency in the Country where the auction took place by means of:

- A. Cash, in accordance with the legislation in force in the Principality of Monaco
- B. Bank transfer payable to ART CONTACT SARL: Bank: Société Générale IBAN: MC58 3000 3023 0800 0200 0551 238 SWIFT BIC: SOGEMCM1
- C. Some credit/debit cards are accepted, with a surcharge on the total amount due for foreign cards. Please contact the Auction House for further information.

ART CONTACT may offer, upon agreement with the Seller, to those Buyers it deems reliable, the possibility to pay for purchased lots in instalments. Potential Buyers who wish to undertake payment by instalments should contact the Management of ART CONTACT before the sale.

7.2 In the case of lack of due payment, after full compensation of damages made to ART CONTACT, the Auction House may: a) return the item to the Seller and demand full payment from the Buyer of the due commissions/premium; b) undertake action in order to forcefully obtain the obligations of purchase; c) sell the lot/s privately or in subsequent Auctions, to the disadvantage of the original Buyer, treating any sums paid by the latter as a form of sanction. If the lot/s is kept by ART CONTACT this will be at the risk and expense of the Buyer and the Seller.

7.3 ART CONTACT will be authorized to agree with successful bidders on different forms of payment, deposit, sale by private treaty, insurance of goods and/or any other service that may be required to achieve the best performance of the deal.

8. DELIVERY AND STORAGE

8.1 - LOTS DELIVERY

LOTS DELIVERY

The Buyer, after having paid all the sums due, must collect the lot/s acquired within fifteen working days of the Auction date, at his/her own risk and expense, in full consideration of the opening hours of ART CONTACT. When collecting the lot/s, the Buyer must provide ART CONTACT with a valid document of identity. Should the Buyer request a third party to collect the lot/s already paid for, the latter should possess a written permission signed by the Buyer and a copy of the Buyer's document of identity. The lot/s will be given to the Buyer or to the third party only upon payment made in full. Buyers and Sellers expressly recognize to the Auction House the right to retain the lot/s until all sums due to ART CONTACT have been paid in full.

8.2 - STORAGE

Should the Buyer not collect the lot/s within the aforementioned deadline, ART CONTACT will store them at the sole risk and expense of the Buyer, in the premises for a further five working days. After this period, ART CONTACT will remove the item/s (at the Buyer's own risk and expense) to any warehouse deemed most appropriate. The Auction House will inform the Buyer of the place where the item/s are kept. It is clearly understood that in order to collect the object/s the Buyer will have to pay, in addition to the Hammer Price plus Buyer's Premium etc., any refund due to subsequent expenses incurred by the Auction House.

If purchased lot/s are collected after the aforementioned deadline, the Auction House may debit the costs of storage (by month or part of a month) as follows:

100 euro + VAT for furniture

50 euro + VAT for paintings

25 euro + VAT for works of art and all other lots in general.

Storage costs for cars and motorcycles are specifically quoted in the relevant catalogues.

9. SHIPPING AND EXPORT

9.1 - SHIPPING OF LOTS

ART CONTACT team will be glad to ship lots purchased according to written instructions given by the Buyer, after full payment of the invoice. Shipping will be at the risk and expense of the Buyer who, by means of a written communication, will have to release ART CONTACT from any responsibility concerning this operation. Furthermore, our team is available for evaluations and advice in relation to the shipping methods employed and insurance of the lot/s.

9.2 - EXPORT

Export certificates may be required for certain purchases and, in some cases, customs authorization may also be required. It is the responsibility of the successful bidder to request and obtain them. The French State has the right to grant or refuse an export certificate if the lot is deemed to be a national treasure. ART CONTACT assumes no responsibility for administrative decisions to refuse certificates that may be taken. If an export license is required, the in-

tervention of a freight forwarder is necessary to handle this process as well as the shipping of the cultural property and the buyer must be responsible for choosing this freight forwarder.

9.3 - POSSIBLE RESTRICTIONS

The Principality of Monaco may exercise, in any public sale of works of art, a right of pre-emption over goods offered for sale in the Principality of Monaco. The Principality replaces the last bidder. The pre-emption decision is brought to the attention of the bailiff immediately after the award has been made. It is mentioned in the minutes thereof. It must be confirmed within fifteen days. In the absence of confirmation after this deadline, the item returns to the last bidder.

9.4 - POSSIBLE RESTRICTIONS

Everybody has to respect the current Laws within the State where the Auction is held. In particular, ART CONTACT assumes no responsibility in relation to potential restrictions concerning the export of purchased items and/or in relation to licenses or permits that the Buyer might have to request on the basis of current Laws. The Buyer will not be able to request any refund either from the Seller or from ART CONTACT should the State exercise its right to pre-emption or any other right it may possess. The rights accrued in relation to a sale that should be cancelled due to the denial of authorization to export due to different opinions between the cultural authorities concerned are, nevertheless, to be paid by the Seller to Art Auctions, even if the permission was not given because the Seller did not previously inform Art Auctions of the existence of authorization (for export) given by the relevant authority upon the request of the Seller him/herself.

10. CLAIMS

In the event of claims proving to be well-founded and accepted by ART CONTACT subsequent to the sale of false items, the Auction House may, at its own discretion, declare the sale null and void and, where a request is made in the manner and within the limits of the law, reveal the name of the Seller to the Buyer. The Buyer may make use of this Article only and exclusively in the case that s/he has notified ART CONTACT – according to Articles 137 and following in the Code of Civil Procedure – of the claim in question with the relative proof within fifteen days of the Auction date. In any case, subsequent to an accepted claim the Buyer has the right to receive exclusively what was paid for the disputed lot/s without any addition of interests or other sums for any other reason.

11. ACCEPTANCE OF THE CONDITIONS OF SALE

The current General Conditions of Sale are accepted automatically upon signing the form (see 3.2) and by all those individuals who take part in the Auction. The aforementioned General Conditions of Sale are at the disposal of anyone who requests to see them. Any case of controversy is within the jurisdiction of the Principality of Monaco Law Courts.

12. PRIVACY

ART CONTACT undertakes to preserve the confidentiality of personal information provided by customers in the context of participation in auctions, requests for information or their subscription to Newsletters. The provisions of Law No. 1.165 of 12/23/1993 apply.

Photography
Michele Rosa

Graphic Design
Crea Graphic Design
www.crea.ge.it

Printed in Italy - June 2024



lot 614



WANNENES

wannenesgroup.com