

KERRY TAYLOR
chez MAURICE *à Paris*

HAUTE COUTURE
MODE & ACCESSOIRES



MAURICE }

} AUCTION

VENTE LIVE
JEUDI 27 JUN À 14H00
60, RUE DE LA BOÉTIE - 75008 PARIS



Pour toute demande concernant cette vente
veuillez contacter :
For any query you may have about the auction
please contact:

MAURICE AUCTION
Commissaires-Priseurs
SALOMÉ PIRSON & MARIE-LAURENCE TIXIER

contact@mauriceauction.com
@maurice_auction
60, rue La Boétie
75 008 Paris
Tel : +33 (0)1 49 53 90 25

KERRY TAYLOR
Spécialiste internationale Mode

info@kerrytaylorauctions.com
+44 (0)20 8676 4600

Les pièces de maroquinerie ont été expertisées par Jérôme Lalande,
expert près la Cour d'appel de Paris.

The leather goods have been appraised by the expert Jérôme Lalande.

Les lots précédés du sigle \$ sont vendus au
Profit de l'Association Lynde Francis Trust.

**Lots marked with the symbol \$ are sold for the benefit
of the Lynde Francis Trust Association.**



Les lots précédés du symbole * sont composés de
matériaux organiques en provenance d'espèces
en voie de disparition, des restrictions quant
à l'importation ou l'exportation peuvent
s'appliquer ou un certificat CITES peut être
nécessaire. Pour une sortie de l'UE, un CITES
de ré-export peut être nécessaire, celui-ci
étant à la charge du futur acquéreur. Cette
information est donnée à titre indicatif.

**For the export lots preceded by the symbol *,
Import or Export restrictions may apply or
a CITES Licence might be needed as this lot
contains organic material from endangered
species. This information is given for
indicative purposes.**

MAURICE {



**HAUTE COUTURE
MODE &
ACCESSOIRES**

} AUCTION

EXPOSITION OUVERTE AU PUBLIC
MARDI 25 JUIN DE 10H À 19H
MERCREDI 26 JUIN DE 10H À 19H

VIEWING TIMES
TUESDAY 25 JUNE : 10.00 AM-7.00 PM
WEDNESDAY 26 JUNE : 10.00 AM-7.00 PM

VENTE LIVE
JEUDI 27 JUIN À 14H
60, RUE DE LA BOÉTIE - 75008 PARIS

AUCTION
THURSDAY 27 JUNE 2.00 PM
60, RUE DE LA BOÉTIE - 75008 PARIS

RETROUVEZ L'INTÉGRALITÉ DES LOTS DE LA VENTE
EN LIGNE SUR : MAURICEAUCTION.COM

PLEASE FIND ALL THE LOTS ON OUR WEBSITE :
MAURICEAUCTION.COM



INFORMATIONS

IL EST POSSIBLE DE SUIVRE ET DE PARTICIPER
À LA VENTE :

- 60, rue de la Boétie - 75008 Paris
- Par téléphone sur demande par mail jusqu'à 2H avant la vente à contact@mauriceauction.com
- En laissant des ordres d'achat jusqu'à 2H avant la vente par mail à contact@mauriceauction.com
- Sur Drouot.com - Frais à la charge de l'acheteur (1,5%HT)
- Sur Invaluable - Frais à la charge de l'acheteur (3%HT)

It is possible to follow and participate to the sale :

- In the auction room at 60, rue de la Boétie, 75008 Paris
- By telephone on request by mail until 2 hours before the sale at contact@mauriceauction.com
- By leaving purchase orders until 2 hours before the sale by email at contact@mauriceauction.com
- On Drouot.com - Expenses at the charge of the buyer (1,5%HT)
- On Invaluable - Expenses at the charge of the buyer (3%HT)

FRAIS EN SUS DES ENCHÈRES / BUYER'S PREMIUM

25% HT / 30% TTC
25% EXCL TAX / 30% INCL TAX

RÈGLEMENT / PAYMENT

- Par virement : FR69 3000 2004 3400 0044 6976 W09
By wire transfer
- En ligne dans l'onglet paiement du site : mauriceauction.com
Online in the payment tab of the mauriceauction.com website
- Par carte bleue
By credit card
- En espèces dans la limite autorisée
In cash within the authorized limit

STOCKAGE / STORAGE

Les lots pourront être récupérés sur rendez-vous une fois le règlement effectué au 60, rue La Boétie 75008 Paris.

A compter du lundi suivant le 30e jour après la vente, le lot acheté réglé ou non réglé restant dans l'entrepôt, fait l'objet d'une facturation de 50 euros HT par semaine et par lot, toute semaine commencée étant due dans son intégralité au titre des frais d'entreposage et d'assurance.

The lots could be picked up once the payment has been done in our offices 60, rue La Boetie 75008 Paris.

Starting from the Monday following the 30th day after the sale, any purchased lot, whether paid or unpaid, remaining in the warehouse, will be subject to a weekly billing of 50 euros excluding taxes per lot. Any partially started week will be fully charged for storage and insurance fees.

TRANSPORT / SHIPPING

Pour la livraison de vos objets, merci de contacter ThePackengers : hello@thepackengers.com
Veuillez joindre votre bordereau réglé à votre demande.
Vous êtes libre de choisir le transporteur de votre choix.

For the shipping of your items, please contact ThePackengers: hello@thepackengers.com
Please join your paid invoice. You are free to work with any shipping company of your choice.

MAURICE } } AUCTION

1. LOUIS VUITTON
Sac cabas en toile damier ébène et vache marron

Doublure en suédine corail
Fermeture par système aimanté
Dimensions : 35x27x11 cm environ

Tote bag in ebony checkerboard canvas and brown cowhide
Coral suede lining
Magnetic closure
Dimensions : approximately 35x27x11 cm

400 / 600 €

[Photo du lot sur notre site](#)

2. LOUIS VUITTON
Compagnon en cuir épi bleu

Bijouterie en métal palladié
Doublure en veau grainé noir, fermeture par système zippé
Dimensions : 20x10x2,5 cm environ

Companion in blue herringbone leather
Palladium-plated metal jewellery
Black grained calfskin lining, zip fastening
Dimensions : approximately 20x10x2.5 cm

200 / 300 €

[Photo du lot sur notre site](#)

4. LOUIS VUITTON
Vanity case en cuir épi noir

Bijouterie en métal doré
Doublure en vuittonite grise, pochette intérieure détachable
Dimensions : 32x22x21 cm environ

Black herringbone leather vanity case
Gold-tone metal jewellery
Grey Vuittonite lining, detachable inside pocket
Dimensions : approximately 32x22x21 cm

600 / 800 €

[Photo du lot sur notre site](#)

3. LOUIS VUITTON
Sacoche double zip en cuir Taiga graphite

Bijouterie en métal palladié
Doublure en tissu noir, fermeture par système zippé
Dimensions : 40x26x12 cm environ

Taiga graphite leather double zip briefcase
Palladium-plated metal jewellery
Black fabric lining, zip fastening
Dimensions: approximately 40x26x12 cm

Very good condition, key ring
Dust bag

500 / 700 €

[Photo du lot sur notre site](#)

5. LOUIS VUITTON
Sac Neverfull en cuir épi bleu, garnitures en veau noir

Bijouterie en métal palladié
Doublure en suédine noir, fermeture par lien resserrant, pochette intérieure indépendante
Dimensions : 32x29x16 cm environ

Neverfull bag in blue herringbone leather with black calf trim. Palladium-plated metal jewellery.
Black suede lining, drawstring fastening, separate inside pocket.
Dimensions : approximately 32x29x16 cm

800 / 1000 €

[Photo du lot sur notre site](#)

6. LOUIS VUITTON
Valise pégase en cuir Taiga graphite

Bijouterie en métal palladié
Doublure en nylon noir, fermeture par système zippé
Dimensions : 55x40x19 cm environ

Taiga graphite leather Pegasus suitcase
Palladium-plated metal jewellery
Black nylon lining, zip closure
Dimensions : approximately 55 x 40 x 19 cm

800 / 1000 €

[Photo du lot sur notre site](#)

7. LOUIS VUITTON
Sac Alma en cuir vernis rouge

Bijouterie en métal doré
Doublure en tissu rouge
Dimensions : 39x30x19 cm environ
On y joint une petite pochette maquillage Louis Vuitton en cuir vernis rouge

Alma bag in red patent leather
Gold-tone metal jewellery
Red fabric lining
Size: 39x30x19 cm
Enclosed is a small Louis Vuitton make-up bag in red patent leather

1500 / 2500 €



7.



9.

8. **HERMES**
 Sac 'Kelly Sport' grand modèle en veau box noir,
 circa 1987
- Bijouterie en laiton plaqué or, doublure en
 chèvre noire
 Dimensions : 30x32x12 cm environ
- Kelly Sport' large bag in black box calfskin
 Gold-plated brass jewellery, black goatskin
 lining
 Dimensions approx. 30x32x12 cm, circa 1987**

1500 / 2000 €

[Photo du lot sur notre site](#)

9. **HERMES**
 Sac Victoria en veau togo parchemin,
 circa 2005
- Doublure en toile H chevron
 Bijouterie en métal palladié
 Dimensions : 35x23x16 cm environ
- Victoria bag in parchment togo calfskin
 Herringbone H-canvas lining
 Palladium-plated metal jewellery, circa 2005
 Dimensions : 35x23x16 cm approx**

1500 / 2000 €

10. **HERMES**
 Sac 'Victoria' de voyage en veau togo gris orage,
 circa 2021
- Bijouterie en laiton plaqué palladium, doublure
 en tissus
 Dimensions : 45 x 27 x 21 cm environ
 Tirette, clochette, cadenas et clés, dust bag
 et boîte
- Victoria' travel bag in storm grey togo calfskin.
 Palladium-plated brass jewellery, fabric lining.
 Dimensions approx. 45 x 27 x 21 cm. Pull tab,
 bell, padlock and keys, dust bag and box**

1500 / 2000 €

[Photo du lot sur notre site](#)

- *11. **HERMES**
 Sac 'Kelly' sellier 35cm en crocodile Crocodile d'Estuaire
 (Crocodylus Porosus- Pré-convention de Washington)
 marron, circa 1970
- Bijouterie en laiton plaqué or, doublure en
 chèvre marron
 Dimensions : 35x25x12 cm environ
 Tirette, clochette, cadenas gainé et clés,
 dust bag

**Kelly' brown Estuarine Crocodile (Crocodylus
 Porosus - Pre-Convention of Washington) saddle
 bag 35cm
 Gold-plated brass jewellery, brown goatskin
 lining
 Dimensions : 35x25x12 cm approx
 Pull-tab, bell, sheathed padlock and keys,
 dust bag**

3000 / 5000 €

[Photo du lot sur notre site](#)

- *12. **HERMES**
 Sac Kelly 35 cm en Crocodile d'Estuaire (Crocodylus
 Porosus- Pré-convention de Washington) fauve,
 circa 1965
- Doublure intérieure en chèvre fauve
 Bijouterie en métal plaqué or
 Tirette, clochette, clés et cadenas
 Dimensions : 35 x 24 x 14 cm environ
 Enchapes, dés et poignée non d'origine
 Dans une boîte Hermès
- Kelly bag 35 cm in Estuarine Crocodile (Crocodylus
 Porosus - Pre-Convention of Washington) in tan
 color, Circa 1965
 Interior lining in tan goat leather.
 Gold-plated metal hardware including zipper,
 clochette, keys, and lock.
 Dimensions : Approximately 35 x 24 x 14 cm
 Non-original flaps, posts, and handle
 Comes in an Hermès box**

3000 / 5000 €

[Photo du lot sur notre site](#)

- *13. **HERMES**
Sac Kelly 28 cm sellier en Crocodile d'Estuaire
(Crocodilus Porosus- Pré-convention de Washington)
marron, circa 1978

Doublure intérieure en chèvre marron
Bijouterie en métal plaqué or
Tirette, clochette, clés et cadenas
Dimensions : 28x20x11 cm environ

**Kelly 28 cm saddle bag in brown Estuarine
crocodile (Crocodilus Porosus- Pré-convention
de Washington) leather
Brown goatskin lining
Gold-plated metal jewellery
Pull tab, bell, keys and padlock
Dimensions : 28x20x11 cm approx**

5000 / 7000 €

14. **YVES SAINT LAURENT**
Une ceinture en métal doré ornée de cabochons de pierres
fantaisie, années 1980/1990

**A gilt and cabochon belt, 1980s-90s
unsigned, of woven gilt wire bands interspersed
with faux turquoise and rhodonite cabochons,
with central floral buckle, length 83cm 33in**

600 / 1000 €

[Photo du lot sur notre site](#)

15. **YVES SAINT LAURENT**
Un collier en métal doré,
Circa 1990

**A gilt metal necklace, circa 1990
signed YSL to chain plaque, of linked gilt
disks with 'ETE' to front encrusted with shaped
colourful rhinestones, max length 50cm 20in**

300 / 500 €

[Photo du lot sur notre site](#)



13.



16.

17. CHANEL HAUTE COUTURE BY JEAN CAZAUBON AND YVONNE DUDEL

Une robe en organza blanc et brun, vers 1975

A white and brown organza dress, circa 1975
Labelled and numbered 53717, the white organza ground printed with brown squares and woven with white polka dots and gold lamé flecks, with band of ruffles to lower skirt, integral belt applied with fabric flower, integral silk slip; with an additional band of ruffles to be worn around the neck, bust 81cm 32in, waist 66cm 26in (2)

500 / 700 €

[Photo du lot sur notre site](#)

16. CHANEL

Une broche en pâte de verre et vermeil, des années 1970

A gilt and pâte de verre brooch, 1970s
signed to back, the hammered gilt frame mounted with red polished pâte de verre stones, with hanging triangular pendant, height 9.9 cm 38.9 in, width 5.5 cm 21.65 in

1000 / 1500 €

18. CHANEL

Une robe en crêpe de laine crème, probablement des années 1980

A cream wool crêpe dress, probably 1980s
unlabelled, with bands of gilt passementerie, faux pearls and faux gemstones to waist and sleeves, floral lace hem woven with blue and gold threads, rhinestone and faux pearl studded gilt buttons to back and cuffs, bust 86cm 34in

600 / 1000 €

[Photo du lot sur notre site](#)

19. CHANEL

Une robe-combinaison en mousseline de soie couleur ivoire, portée par Yasmine Le Bon sur le podium, Printemps-Eté 1989

A défilé ivory chiffon jumpsuit-dress worn by Yasmine Le Bon on the runway, Spring-Summer 1989
unlabelled, but with défilé 'Yasmine' label, appliquéed with embroidered satin flowers, with integral chiffon trousers, ruched satin waistband, faux pearl buttons to rear, bust 86cm 34in

600 / 800 €

[Photo du lot sur notre site](#)

20. CHANEL

Une ceinture en cuir noir et métal doré, probablement Printemps-Eté 1986

A black leather and gilt metal belt, probably Spring-Summer 1986
signed and numbered 25, size 70/28, with an array of gilt medallions depicting Coco's head in profile, perfume bottles, elephants and wheat, with large gilt buckle stamped 'Chanel Paris', 66-74cm 26-29in

600 / 800 €



20.

21. CHANEL
Une veste en laine bouclée couleur bleu marine et rouge,
probablement Printemps-Eté 1989

A navy and crimson bouclé wool jacket, probably
Spring-Summer 1989
Boutique labelled, with gilt CC buttons with
braided edges, concealed vent pockets, gilt
chain weighted hem, bust 97cm 38in
Good condition, slight soiling to right concealed
pocket (minor), would benefit from dry cleaning

450 / 600 €

[Photo du lot sur notre site](#)

22. CHANEL
Une veste croisée en tweed écossais,
Automne-Hiver 1989-90

A tartan tweed double-breasted jacket,
Autumn-Winter 1989-90
Boutique labelled, with quilt-effect gilt CC
buttons, shawl collar, patch pockets,
chest 97cm 38in

250 / 350 €

[Photo du lot sur notre site](#)

23. CHANEL
Une veste en tweed gris touffeté,
fin des années 1980

A grey tufted tweed jacket, late 1980s
Boutique labelled, with gilt CC buttons, brushed
wool trim, chest 102cm 40in

300 / 500 €

[Photo du lot sur notre site](#)

24. CHANEL
Une veste en tweed couleur crème,
des années 1990

A cream tweed jacket, circa 1990
Boutique labelled, with gilt CC buttons with
rounded edges, tilted patch pockets, shawl
collar, gilt chain-weighted hem, bust 97cm 38in

350 / 500 €

[Photo du lot sur notre site](#)

25. CHANEL HAUTECOUTURE BY KARL LAGERFELD
Un ensemble noir de cocktail,
Printemps-Eté 1991

A black cocktail ensemble, Spring-Summer 1991
labelled and numbered 69589, 69590, comprising:
a black jersey dress with ruched bodice, the
skirt with bands of draped ruched fabric, boned
breast cups, gilt square-enclosed CC buttons,
bust 81cm 32in, waist 64cm 25in; a moss crêpe
jacket with matching buttons and ruched jersey
collar, patch pockets, gilt chain weighted hem,
bust 89cm 35in (2)

Provenance : From a Parisian Private Collection

1200 / 1800 €

26. CHANEL
Un bandeau pour cheveux décoré
d'un noeud papillon en satin noir,
fin des années 1990-début des années 2000

A black satin bow tie headband,
late 1990s-early 2000s
labelled, the silk satin with additional
elasticated strap at the back, bow width 11.5cm,
4.5in, in a Chanel box (2)

Provenance : From a Parisian Private Collection

120 / 180 €

[Photo du lot sur notre site](#)





27.

27. CHANEL HAUTE COUTURE BY KARL LAGERFELD
Une robe corsetée noire en laine,
Printemps-Eté 1993

A corseted black wool dress, Spring-Summer 1993
labelled and numbered 70767, with boned bodice,
kick split to skirt, zip closure to back, bust
81cm 32in, waist 61cm 24in

Provenance : From a Parisian Private Collection

1200 / 1800 €

28. CHANEL
Pochette 'Wallet on chain' en agneau matelassé perforé
noir, circa 2006

Bijouterie en métal palladié, doublure en tissus
noir
Dimensions : 19x13x3 cm environ
Présence de l'étiquette d'authenticité

Wallet on chain' clutch bag in black perforated
quilted lambskin
Palladium-plated metal jewellery, black fabric
lining
Dimensions approx. 19x13x3 cm
Circa 2006, authenticity label present

800 / 1200 €

[Photo du lot sur notre site](#)

29. CHANEL HAUTE COUTURE BY KARL LAGERFELD
Une veste noire et blanche,
Automne-Hiver 1993-94

A black and white day/dinner jacket Autumn-
Winter 1993-94
labelled and numbered 71281, of black tweed with
black and white wool facings, black celluloid
buttons centred with gilt CC stamped discs, zip
front closure, bust 81cm 32in; together with a
black tweed skirt of closely matching fabric,
circa 2000, labelled and numbered 79322,
waist 61cm 24in (2)

Provenance : From a Parisian Private Collection

1200 / 1800 €

[Photo du lot sur notre site](#)

30. CHANEL HAUTE COUTURE
Une ceinture en cuir verni et métal doré,
Automne-Hiver 1992-93

A patent leather and gilt metal belt,
Autumn-Winter 1992-93
unlabelled, the gilt buckle adorned with an
array of mounted cabochons, faux-pearls and
coloured enamel, with hammered edges, max waist
64cm 25in; with a Chanel box (2)

Provenance : From a Parisian Private Collection

400 / 600 €

[Photo du lot sur notre site](#)

31. CHANEL
Un chemisier noir et blanc,
Printemps-Eté 1995

A beaded black and white blouse,
Spring-Summer 1995
unlabelled, entirely covered in black and white
seed beads, floral black buttons centred with
gilt CCs, lined in ivory satin, gilt chain
weighted hem, bust 81cm 32in

Provenance : From a Parisian Private Collection

1000 / 2000 €

[Photo du lot sur notre site](#)

32. CHANEL HAUTE COUTURE
Un collier de perles d'imitation,
années 1990

A faux-pearl necklace, 1990s
unsigned, with gilt metal clasp,
length 61cm 24in; with a Chanel box (2)

Provenance : From a Parisian Private Collection

350 / 500 €

[Photo du lot sur notre site](#)

33. CHANEL
Une veste croisée en laine peignée et de couleur
bleu marine,
Automne-Hiver 1995-96

A navy blue worsted double-breasted jacket,
Autumn-Winter 1995-96
Boutique labelled, size 44, with navy buttons
topped with CC stamped gilt spots, patch pockets,
gilt chain-weighted hem, chest 102cm 40in

300 / 500 €

[Photo du lot sur notre site](#)

34. CHANEL
Sac classique à double rabat en jersey
de laine matelassé noir, circa 1990

Bijouterie en métal doré
Doublure en tissus gros grain rouge, fermeture
par bouton pivotant
Présence de l'étiquette d'authenticité, du dust
bag et de la boîte
Dimensions : 25x16x8 cm environ

Classic double-flap bag in black quilted wool
jersey, circa 1990
Gold-tone metal jewellery
Red grosgrain fabric lining, swivel button
closure
Authenticity label, dust bag and box present
Dimensions : 25x16x8 cm approx.

From a Parisian Private Collection

1500 / 2000 €

[Photo du lot sur notre site](#)

35. CHANEL HAUTE COUTURE BY KARL LAGERFELD
Une robe de cocktail noire et rose,
Automne-Hiver 1994-95

A black and pink cocktail dress,
Autumn-Winter 1994-95
labelled and numbered 72293, the top section
of joined vertical bands of black bouclé wool,
with zip closure to rear, the bottom section of
pink duchess satin with concealed side pockets,
pleated waist, the front applied with rolled
white fleece camelia and black satin bow,
bust 86cm 34in, waist 61cm 24in

Provenance : From a Parisian Private Collection

1000 / 1500 €





37.

36. CHANEL BY VICTOIRE DE CASTELLANE
Un bracelet en laiton laqué et perlé,
Printemps-Eté 1997

A beaded lacquered brass bracelet,
Spring-Summer 1997
signed and numbered 97P to clasp, with purple
teardrop cabochons emanating from metal loops
centred with orange faceted beads, CC clasp,
length 20.4cm 8in

600 / 800 €

[Photo du lot sur notre site](#)

37. CHANEL HAUTE COUTURE BY KARL LAGERFELD
Un costume croisé en tweed noir,
Printemps-Eté 1995

A black tweed double-breasted suit,
Spring-Summer 1995
labelled and numbered 72793, 72794, the jacket
with black and white enamel CC buttons, the
edges embroidered with triangles of white wool,
patch pockets, gilt chain weighted hem; with
matching skirt, bust 81cm 32in, waist 56cm 22in

Provenance : From a Parisian Private Collection

3000 / 5000 €

38. CHANEL BY VANESSA SEWARD
Un bracelet en chaîne dorée et perles colorées,
Printemps-Eté 1998

A beaded gilt chain bracelet, Spring-Summer 1998
signed and numbered 98P to buckle, the gilt
chains applied with rows of irregularly shaped
glass beads in purple, clear and orange hues,
with CC clasp, length 19cm 7.5in

1000 / 1500 €

[Photo du lot sur notre site](#)

39. CHANEL HAUTE COUTURE BY KARL LAGERFELD
Un ensemble de cocktail en velours noir et tulle blanc,
Printemps-Eté 1997

A black velvet and white tulle cocktail ensemble,
Spring-Summer 1997
labelled and numbered, 76572, 76573, comprising:
a black velvet cropped jacket with faux-pearl
buttons to front and cuffs, stand collar, padded
breast cups, zip closure to back; an ivory
layered tulle skirt with shredded edges, bust
76cm 30in, waist 64cm 25in (2)

Provenance : From a Parisian Private Collection

1500 / 2500 €

40. CHANEL BY VICTOIRE DE CASTELLANE
Une ceinture en laiton laqué et fausses perles,
Printemps-Eté 1997

A lacquered brass and faux-pearl belt,
Spring-Summer 1997
signed and numbered 97P to clasp, with round and
teardrop pearls emanating from central metal
loops, length 69cm 27in

600 / 1000 €

[Photo du lot sur notre site](#)

39.





42.



41.

41. CHANEL BY VANESSA SEWARD
 Une ceinture en chaîne dorée décorée de perles,
 Printemps-Eté 1998

A beaded gilt chain belt, Spring-Summer 1998 signed and numbered 98P to one end, the gilt chains applied with rows of irregularly shaped glass beads in purple, clear and orange hues, with CC clasp, length 75cm 29.5in

1200 / 1800 €

42. CHANEL HAUTE COUTURE BY KARL LAGERFELD
 Une robe à volants et dentelle noire,
 Automne-Hiver 1996-97

A ruffled black lace ribbon dress, Autumn-Winter 1996-97 labelled and numbered 76047, with black satin waistband centred with a satin bow tie and camelia, the tulip skirt with crinoline-edged hem, bust 81cm 32in, waist 63cm 25in

This dress is based on an early 1930s original by Coco, this look was worn by Kate Moss on the catwalk with a 'Body Beautiful' jumpsuit underneath.

Provenance : From a Parisian Private Collection

2000 / 3000 €

43. CHANEL
 Un sac de soirée en perles de cristal,
 Printemps-Eté 1997

A crystal beaded evening bag, Spring-Summer 1997 stamped and numbered 97P to gilt tag, of faceted blue green and clear crystal beads enclosed by gilt chains, height 29cm 11in, width 15cm 6in; in a Chanel box affixed with a white camelia (2)

Provenance : From a Parisian Private Collection

800 / 1200 €

[Photo du lot sur notre site](#)

44. CHANEL
 Une veste croisée en tweed fantaisie bleu et argent,
 Printemps-Eté 2018

A blue and silver fantasy tweed double-breasted jacket, Spring-Summer 2018 labelled, with blue white and silver braided edgings, clear acrylic CC buttons containing bubbles and backed with mother of pearl, patch pockets, chest 117cm 46in

400 / 600 €

[Photo du lot sur notre site](#)

45. CHANEL
Sac à main Classique à rabat en toile denim et cuir vernis blanc, circa 2002

Bijouterie en métal palladié, doublure en agneau bleu gris
Présence de l'étiquette d'authenticité
Dimensions : 26x13x4 cm environ

Classic handbag with flap in denim canvas and white patent leather
Circa 2002
Palladium-plated metal jewellery, blue-grey lambskin lining
Authenticity label present
Dimensions 26x13x4 cm approx.

600 / 700 €

[Photo du lot sur notre site](#)

46. CHANEL BY VICTOIRE DE CASTELLANE
Une ceinture en métal décorée de franges, Printemps-Eté 1997

A fringed metal belt, Spring-Summer 1997 signed and numbered 97P to clasp, the chainlinks centred with rhinestones, with iridescent faceted bead fringing, CC clasp, length 77-84cm, 30.5-33in

400 / 600 €

[Photo du lot sur notre site](#)

47. CHANEL HAUTE COUTURE BY KARLLAGERFELD
Un ensemble tailleur en crêpe de soie noire, Printemps-Eté 1998

A black silk crêpe suit ensemble, Spring-Summer 1998 labelled and numbered 77382, 77383, 77384, comprising: a long black jacket with single button, the sleeves of joined vertical strips of fabric, bust 91cm 38in; matching trousers of joined vertical strips of fabric, waist 68cm 23in; an ivory crêpe de chine sleeveless blouse, bust 76cm 30in (3)

600 / 1000 €

[Photo du lot sur notre site](#)

48. CHANEL
Sac à main en veau grain caviar noir matelassé, circa 1998

Bijouterie en métal doré, doublure en agneau noir
Présence de l'étiquette d'authenticité
Dimensions : 30x25x9 cm environ

Quilted black caviar grain calfskin handbag
Circa 1998
Gilt metal jewellery, black lambskin lining
Authenticity label present
Dimensions approx. 30x25x9 cm

800 / 1200 €

[Photo du lot sur notre site](#)

49. CHANEL HAUTE COUTURE BY KARLLAGERFELD
Une robe de cocktail en taffetas violet pailleté, 1998

A sequined purple taffeta cocktail dress, 1998 labelled and numbered 77509, with cascading purple silk faille and clear plastic sequins, arm loops extending from broad neckline, the matching belt with rhinestone encrusted clasp, bust 76cm 30in, waist 66cm 26in (2)

Provenance : From a Parisian Private Collection

1500 / 2500 €

50. CHANEL HAUTE COUTURE BY KARLLAGERFELD
Une veste en laine bouclée noire et jupe en tulle pailleté, Automne-Hiver 1998-99

A black bouclé wool jacket and sequinned tulle skirt, Autumn-Winter 1998-99 labelled and numbered 77541, 77671, the jacket with concealed hook and loop front closure, notched lapels, bust 86cm 34in; the skirt embroidered with radiating bands of black sequins, lined in black gauze, waist 56cm 22in (2)

Provenance : From a Parisian Private Collection

1000 / 1500 €

[Photo du lot sur notre site](#)



51. CHANEL
 Sac à main Classique à double rabat en agneau velours
 bleu ciel matelassé
 Circa 1992

Bijouterie en métal doré, doublure en agneau
 bleu ciel
 Présence de l'étiquette d'authenticité
 Dimensions : 25x16x7 cm environ

Classic handbag with double flap in light blue
 quilted lambskin
 Circa 1992
 Gilt metal jewellery, light blue lambskin lining
 Authenticity label present
 Dimensions approx. 25x16x7cm

1600 / 2000 €

52. CHANEL HAUTE COUTURE BY KARL LAGERFELD
 Un costume en tweed gris,
 Printemps-Eté 1999

A grey tweed suit, Spring-Summer 1999
 labelled and numbered 77930, 77931, the long
 jacket with metal bar hook closure covers to
 chest, large patch pockets, bust 81cm 32in; the
 matching skirt with side pockets,
 waist 61cm 24in

Provenance : From a Parisian Private Collection

700 / 1000 €

[Photo du lot sur notre site](#)

53. CHANEL BY VANESSA SEWARD
 Un bracelet en métal tissé,
 Printemps-Eté 1999

A woven metal wire bracelet, Spring-Summer 1999
 signed and numbered 99P to buckle, the coiled
 metal wire loosely woven allowing the bracelet
 to stretch, CC stamp to chrome buckle, max
 length 24cm, 9.5in

300 / 500 €

[Photo du lot sur notre site](#)

54. CHANEL BY VANESSA SEWARD
 Une ceinture en métal tissé,
 Printemps-Eté 1999

A woven metal wire belt, Spring-Summer 1999
 signed and numbered 99P to buckle, the coiled
 metal wire loosely woven allowing the belt to
 stretch, CC stamped to chrome buckle, max length
 79cm 31in

400 / 600 €

[Photo du lot sur notre site](#)



51.

55. CHANEL BY VANESSA SEWARD
 Un bracelet en cote de mailles perlées,
 Printemps-Eté 1999

A beaded chainmail bracelet, Spring-Summer 1999
 signed and numbered 99P to clasp, of joined
 metal links edged in blue faceted beads, with
 rectangular cutout to one side, CC clasps and
 chain ends, length 17cm 6.75in

300 / 500 €

[Photo du lot sur notre site](#)

56. CHANEL BY VANESSA SEWARD
 Un tour de cou en cote de mailles perlées,
 Printemps-Eté 1999

A beaded chainmail choker, Spring-Summer 1999
 signed and numbered 99P to clasp, of joined
 metal links edged in blue faceted beads, with
 rectangular cutout to one side, CC security
 chain, length 33-37cm 13-14.5in

500 / 700 €



56.

57. CHANEL HAUTE COUTURE BY KARL LAGERFELD
Un costume bleu marine,
Printemps-Eté 2000

A navy blue suit, Spring-Summer 2000
labelled and numbered 78570, 78571, 78572,
comprising: a moss crêpe jacket with chevron
chest pockets, slits to cuffs, chain weighted
hem, bust 86cm 34in; a pleated crêpe georgette
skirt, waist 56cm 22in; a matching neck tie with
pointed tips; together with a gold toned metal
belt with oval buckle, made by IBU for Chanel (4)

Provenance : From a Parisian Private Collection

1000 / 1200 €

[Photo du lot sur notre site](#)

58. CHANEL BY VANESSA SEWARD
Un bracelet « chaîne de vélo »,
Printemps-Eté 1999

A 'bicycle chain' bracelet, Spring-Summer 1999
signed and numbered 99P to clasp, of linked
lacquered metal, with small CC pendant security
chain, length 20.5cm 8in

250 / 400 €

[Photo du lot sur notre site](#)

59. CHANEL BY VANESSA SEWARD
Une ceinture ou un collier « chaîne de vélo »,
Printemps-Eté 1999

A 'bicycle chain' belt/necklace,
Spring-Summer 1999
signed and numbered 99P to clasp, of linked
lacquered metal, with small CC pendant security
chain, length 83cm 32.5in

400 / 600 €

[Photo du lot sur notre site](#)

60. CHANEL BY VANESSA SEWARD
Une parure de main décorée de perles
et une broche assortie,
Automne-Hiver 1998-99

A beaded bracelet/hand ornament with matching
brooch, Autumn-Winter 1998-99
signed and numbered 98A to bracelet clasp only,
of wire linked faceted beads in blue, grey and
black tones, forming structured floral bursts,
the bracelet wraps around the wrist, with an
extended length and finger loop, gilt CC clasp and
chain end, bracelet wrist circumference
19-24.5cm, 7.5-9.5in, brooch width 8cm 3in (2)

700 / 1000 €

61. CHANEL BY VANESSA SEWARD
Une ceinture de perles,
Automne-Hiver 1998-99

A beaded belt, Autumn-Winter 1998-99
signed and numbered 98A to clasp, of wire linked
faceted beads in blue, grey and black tones,
forming structured floral bursts at front and
hanging fringes, gilt CC clasp and chain end,
length 77-88cm, 30.5-34in

1000 / 1500 €

[Photo du lot sur notre site](#)



60.



62.

62. CHANEL HAUTE COUTURE BY KARL LAGERFELD
Une robe de cocktail à sequins,
Automne-Hiver 2000-01

A sequined pink chenille cocktail dress,
Autumn-Winter 2000-01
labelled and numbered 79080, the pink ground
embroidered with shimmering pink and gold sequins
in camouflage designs, with patch chest pockets,
edged in pink silk tulle, zip closure to back,
bust 81cm 32in

Provenance: From a Parisian Private Collection

2500 / 4000 €

63. CHANEL
Une paire de boucles d'oreilles en double C,
fin des années 1990-début des années 2000

A pair of gilt double-C earrings,
late 1990s-early 2000s
stamped and numbered 2084 to back, encrusted
with rows of rhinestones, width 2 cm each, in a
Chanel box (3)

200 / 300 €

[Photo du lot sur notre site](#)

64. CHANEL
Un sac en satin noir, vers 2000

A black satin bag, circa 2000
signed to pop fastener, of round design with
satin and leather wrist strap, height incl.
strap 32cm 12.5, width 15cm 6in

Provenance : From a Parisian Private Collection

400 / 600 €

[Photo du lot sur notre site](#)

65. CHANEL HAUTE COUTURE BY KARL LAGERFELD
Une robe en laine crème,
Printemps-Eté 2001

A cream wool dress, Spring Summer 2001
labelled and numbered 79380, the jacket and
integral skirt edged with blue white and red
wool braiding, with integral blue silk crêpe
front panel and collar, bust 86cm 34in, waist
61cm 24in; together with a shimmering cream/gold
leather belt with gilt clasp-cover inset with
polished stones (2)

Provenance : From a Parisian Private Collection

2500 / 4000 €

66. CHANEL HAUTE COUTURE BY KARL LAGERFELD
Une tenue de soirée en mousseline de soie perlée,
Automne-Hiver 2001-02

A beaded chiffon evening suit,
Autumn-Winter 2001-02
labelled and numbered 79967, 79968, comprising:
an ivory chiffon jacket embroidered with a
lattice of tiny iridescent bugle beads and
black seed beads, with brass and black enamel
floral buttons, black chiffon sleeves, collar
and integral necktie, bust 76cm 30in; a pair
of matching black chiffon trousers, waist 61cm
24in; a black silk jersey body, no bolduc,
bust 76-86cm 30-34in (3)

Provenance : From a Parisian Private Collection

1500 / 2500 €

[Photo du lot sur notre site](#)

67. CHANEL HAUTE COUTURE BY KARL LAGERFELD
Un costume en tweed crème,
Printemps-Eté 2004

A cream tweed suit, Spring-Summer 2004
Labelled and numbered 081681, 081682, the jacket
with self covered buttons edged with moulded
metal acanthus scrolls, with four jetted pockets
to front, chain weighted hem; with matching
skirt, bust 97cm 38in, waist 79cm 31in

500 / 700 €

[Photo du lot sur notre site](#)

68. CHANEL
Une veste en tweed rayé bleu ciel,
Collection croisière 2005

A striped baby blue tweed jacket,
cruise collection 2005
labelled, size 42, with frayed white edges, self
tie to front, integral front blouse panel of silk
ticking, with faux-pearl buttons,
bust approx 91cm 36in

300 / 500 €

[Photo du lot sur notre site](#)

69. CHANEL HAUTE COUTURE BY KARL LAGERFELD
Un costume en laine bouclée couleur lilas,
Automne-Hiver 2005-06

A lilac bouclé suit, Autumn-Winter 2005-06
labelled and numbered 082424, 082425, the jacket
with stand collar, the seams edged with metal
chains, chain covered buttons; with matching
skirt, chest 97cm 38in, waist 81cm 32in (2)

500 / 700 €

[Photo du lot sur notre site](#)

70. CHANEL
Une veste en crêpe de laine blanche,
années 2010

A white loosely woven wool crêpe jacket, 2010s
labelled, with chiffon neckline, pocket edges
and cuffs applied with bands of thickly woven
floral lace, edged in white seed beads, single CC
button to neck, chain weighted hem,
bust 86cm 34in

400 / 600 €

[Photo du lot sur notre site](#)



65.



71. CHANEL
Une veste en laine bleue à double boutonnage, années 2010

A blue wool double-breasted jacket, 2010s labelled, with white enamel buttons with silver CC stamps, cutaway front hem, chain weighted hem, bust 86cm 34in

400 / 600 €

[Photo du lot sur notre site](#)

74. CHANEL
Une veste en tweed noir, années 2010

A black tweed jacket, 2010s labelled with frayed edges, black painted metal CC buttons, patch pockets, chain weighted hem, bust 86cm 34in

400 / 600 €

[Photo du lot sur notre site](#)

72. CHANEL
Une jupe en laine grise et jaune, probablement des années 2010

A grey and yellow wool skirt, probably 2010s labelled, the fabric with flecks of woven clear plastic threads, pleated at waist band, ornate metal CC centred button studded with cabochons, waist 61cm 24in

400 / 600 €

[Photo du lot sur notre site](#)

75. CHANEL
Minaudière en plastique noire, Cadeau Presse/VIP Noël 2016

Agrémenté d'un fermoir pavé de strass multicolore
Bandoulière amovible
Dimensions : 16 cm diamètre environ

Black plastic minaudière adorned with a multicolored rhinestone clasp, VIP gift, Christmas 2016
Detachable shoulder strap
Dimensions : approximately 16 cm in diameter

400 / 600 €

[Photo du lot sur notre site](#)

73. CHANEL
Une jupe-culotte de couleur bordeaux, années 2010

A pair of maroon silk culottes, 2010s labelled, darted and pleated at sides, with lace to hem, metal lattice CC buttons, waist 66cm 26in

200 / 300 €

[Photo du lot sur notre site](#)

76. CHANEL
Un manteau en tweed noir et blanc de la collection 'Paris-Bombay', Métiers d'Art, Pre-Fall 2012

A black and white tweed coat, 'Paris-Bombay' collection, Métiers d'Art, Pre-Fall 2012 labelled, with ornate brass buttons adorned with black enamel and encrusted with faux gems, the midriff woven with tufted tulle, lurex and wool, with concealed side pockets, stand collar, bust 86cm 34in

600 / 1000 €

77. CHANEL
Une robe de cocktail en viscose fuchsia,
Printemps-Été 2013

A fuchsia viscose cocktail dress,
Spring-Summer 2013
labelled, the waffle-textured fabric with deep
box pleats at waist, with bands of ribbed fabric
to bust, waist and hem, pink and white enamel
'Chanel' tag to left hip, bust 76cm 30in,
waist 71cm 28in

400 / 600 €

[Photo du lot sur notre site](#)

78. CHANEL
Une mini-robe en tweed noir,
Automne-Hiver 2013-14

A black tweed mini-dress, Autumn-Winter 2013-14
labelled, the edges applied with braided and
tufted ribbons, metal globe buttons to shoulder
straps, bust 86cm 34in

400 / 600 €

[Photo du lot sur notre site](#)

79. CHANEL
Un sac à main en forme de cœur, en soie noire
avec effet matelassé, vers 2000

A quilt-effect black silk heart bag, circa 2000
signed to interior, with gilt chain, lattice of
black top stitching, height incl. straps 40cm
15.75in, width 18cm 7in

Provenance : From a Parisian Private Collection

500 / 800 €

[Photo du lot sur notre site](#)

80. CHANEL
Un manteau en dentelle dorée, de la collection
« Paris-Bombay », Métiers d'Art,
Pré-Automne 2012

A gold lace coat, 'Paris-Bombay' collection,
Métiers d'Art, Pre-Fall 2012
labelled, the white tulle ground woven with floral
lace outlined with heavy black and gold gimp,
gilt buttons set with faux-gemstones, scalloped
edges, chest 102cm 40in

600 / 1000 €



80.

81. YVES SAINT LAURENT

Une veste en peau de serpent marron,
années 1980

A brown snakeskin jacket, 1980s
Rive Gauche label, with four front flap pockets,
black velvet collar, self-covered buttons, lined
in quilted satin, bust 102cm 40in

250 / 400 €

[Photo du lot sur notre site](#)

82. YVES SAINT LAURENT

Un manteau en cuir et fourrure bicolore marron et noir,
années 1980

A dark brown and black leather coat, 1980s
Fourrures label, with domed gilt studs to flared
cuffs and front closure, two toned dark brown
and black fur lining and lapels, gilt bauble
buttons, jetted side pockets, chest 140 cm 55in

300 / 500 €

[Photo du lot sur notre site](#)

83. VERSACE

Manteau en laine texturée, moderne

A brown wool blend coat, modern
labelled, the pale brown ground woven with wavy
deep brown lines, self covered buttons centred
with gilt medusa masks, chest 86cm 34in

200 / 300 €

[Photo du lot sur notre site](#)

84. LOEWE

Une robe moderne en fausse fourrure noire

An unusual black faux-fur dress, modern
labelled, the skirt with two long straps that can
be tied behind the neck, kick splits to sides,
waist 81cm 32in

300 / 500 €

[Photo du lot sur notre site](#)

85. SAINT LAURENT

Un manteau noir à fils brillantés,
circa 2015

A black metallic flecked tweed coat, circa 2015
Paris label, with front button closure, notched
lapels, chest approx 127cm 50in

250 / 400 €

[Photo du lot sur notre site](#)

86. GUCCI

Un manteau en laine et cuir noir,
Automne-Hiver 2006-07

A black wool and leather coat,
Autumn-Winter 2006-07
labelled, size 40, edged in gilt studs, with
leather cuffs, leather belt with gilt buckle,
flap side pockets, chest 86 cm 34in (2)

250 / 400 €

[Photo du lot sur notre site](#)

87. JEAN PAUL GAULTIER

Une veste en laine et voile de coton noir,
collection Puzzle, Automne-Hiver 2001-02

A double-breasted black wool jacket, 'Puzzle'
collection, Autumn-Winter 2001-02
green on black Femme label, size UK10, with
horizontal split to front panels, black cotton
voile shoulder panels and integral blouse panels,
bust 90cm

250 / 450 €

[Photo du lot sur notre site](#)

88. TRAVAIL ANONYME ANNEES 1940

Une veste en crêpe mousseline aubergine
des années 1940

A 1940s aubergine moss crêpe jacket, applied with
ivory leather side panels printed with French
love letters written by Simone de Beauvoir to
Nelson Algren in 1947, exaggerated collar, self
covered buttons, bust 91cm 36in

200 / 300 €

[Photo du lot sur notre site](#)

89. ROBERT PIGUET HAUTE COUTURE

Une robe en crêpe mousse noir,
vers 1945

A black moss crêpe dress, circa 1945
labelled, the fabric gathered and
pleated at waist, shawl collar,
zip closure to back,
bust 100cm 40in

400 / 600 €



89.



91.

90. NINA RICCI HAUTE COUTURE

Une robe en taffetas noir,
du début des années 1950

A black taffeta dress, early 1950s
unlabelled, with velvet shawl collar, van dyked
pleated ribbons to skirt, skirt pleated at
waistline, bust 92cm 36in, waist 76cm 30in

400 / 600 €

[Photo du lot sur notre site](#)

91. CHRISTIAN DIOR HAUTE COUTURE

Un manteau du soir en lamé or et argent,
modèle Coppélia, Automne-Hiver 1953-54

A gold/silver brocaded lamé evening coat, Model
'Coppélia, Autumn-Winter 1953-54
labelled and numbered 02751, the shimmering gold/
silver fabric woven with floral repeats in ivory
brown and grey silk threads, with wide sleeves
and turned up cuffs, outsized

1000 / 1500 €

92. MADAME GRÈS HAUTE COUTURE

Une robe du soir en crêpe de soie plissé,
Automne-Hiver 1954-55

A pleated silk crêpe evening dress,
Autumn-Winter 1954-55
unlabelled, the densely pleated and corseted
bodice intersected with two streaks of bronze
lamé, single shoulder strap, yellow and bronze
ribbon waist tie, padded breast cups, bust 86cm
34in

Provenance:
The Personal Collection of Alix Grès
The Jacques Esterel collection
The Quidam de Revel collection
The present owner

1500 / 2500 €

[Photo du lot sur notre site](#)

93. JACQUES HEIM

Une robe en soie côtelée,
milieu des années 1950

A ribbed silk dress, mid-1950s
Jeunes Filles label, the lavender bodice applied
with floral raised-work, with ivory skirt
similarly decorated in bands to back,
bust 81cm, 32in, waist 56cm, 22in

400 / 600 €

[Photo du lot sur notre site](#)

94. BALENCIAGA HAUTE COUTURE

Un ensemble veste et robe en soie imprimée,
Printemps-été 1960

A printed silk ensemble, Spring-Summer 1960
Paris labelled and numbered 67.371, the silk by
Maison Satche, comprising: sleeveless dress and
jacket printed with bold painterly polka dots,
the dress with concealed pockets within the side
seams, tie belt; the matching short jacket with
low curved and weighted rear hem, short stand
collar, bust 89cm, 35in, waist 61cm, 24in (3)
Marlene Dietrich was photographed wearing an
identical ensemble in Madrid, July, 1960

1400 / 1800 €

[Photo du lot sur notre site](#)

95. JEAN DESSÈS HAUTE COUTURE

Une robe de soirée en mousseline de soie
bleue et turquoise,
du début des années 1960

A blue and turquoise chiffon evening dress,
early 1960s
Paris label, no bolduc, the bodice edged with
silver lamé bands embellished with pale blue
faceted stones and turquoise seed beads, with
bands of pleated chiffon at raised waistline
that fall at the back as full length floating
panels, bust 81cm 32in

800 / 1200 €

[Photo du lot sur notre site](#)

96. CHRISTIAN DIOR HAUTE COUTURE

BY MARC BOHAN

Un manteau en lin noir,
Printemps-Eté 1964

A black linen coat, Spring-Summer 1964
labelled, no bolduc but numbered I18399 to label
front, with ivory silk trim to collar, front
opening and cuffs, chest patch pockets,
bust 92cm 38in

700 / 1000 €

[Photo du lot sur notre site](#)

97. CHRISTIAN DIOR HAUTE COUTURE

BY MARC BOHAN

Une robe en satin rose brodée,
Printemps-Eté 1965

A fine embellished pink satin dress,
Spring-Summer 1965
labelled, no bolduc but numbered I27504 to label
front, the pink satin ground entirely covered
with white tulle which has been elaborately
embroidered in swirling floral designs with
colourful floss silks, sequins, various beads and
rhinestones, the leaves made from inset tulle
in different colours, zip closure to back, kick
split to front, bust 97cm 38in

2000 / 3000 €

98. PIERRE BALMAIN

Une robe en crêpe de soie blanche,
vers 1965

An embellished white silk crêpe dress,
circa 1965
labelled and indistinctly numbered, the bodice
ornately embellished with pearl beads, faceted
stones, metal paillettes and raised-work
embroidery, with raised waistline, long crêpe
skirt, bust 71cm 28in

400 / 600 €

[Photo du lot sur notre site](#)

99. CHRISTIAN DIOR NEW YORK BY MARC BOHAN

Une robe en satin imprimé floral,
années 1960

A floral printed satin dress, 1960s
labelled, with horizontal bands of satin and
chiffon in green and silver tones, printed with
orange roses, with matching rope belt tipped
with orange silk roses, self covered buttons to
back, integral ivory silk crêpe slip,
bust 92cm 38in

400 / 600 €

[Photo du lot sur notre site](#)

100. YVES SAINT LAURENT HAUTE COUTURE

Une robe en dentelle orange,
probablement Printemps-Eté 1966

An orange lace dress, probably Spring-Summer 1966
Labelled and numbered 09704, of orange lace and
ribbonwork, edged in bands of heart and leaf
shaped sequins, bust 81cm 32in

A similar dress was published in British Vogue,
June 1966

600 / 1000 €

[Photo du lot sur notre site](#)

101. CHRISTIAN DIOR HAUTE COUTURE

BY MARC BOHAN

Une cape en laine jaune,
Automne-Hiver 1966-67

A yellow brushed wool cape,
Autumn-Winter 1966-67
labelled, no bolduc but numbered I33560 to label
front, with large black spherical celluloid
buttons, with vents for hands at sides

600 / 1000 €

[Photo du lot sur notre site](#)



97.



102.

102. PACO RABANNE
Une robe en métal fin « Armour », 1967

A fine metal 'Armour' dress, 1967
printed black paper label, formed of linked
aluminium panels, square over the bodice and
graduated rectangular for the skirt, linked by
chain loops, bust 86cm, 34in

This is arguably the most iconic and recognizable
of designs by Paco Rabanne, with its futuristic
looks, metal construction, it was redolent of the
cool 'modern' 1960s minimal approach to design
at a time when the world was fascinated by space
exploration having put a man on the moon.

The beautiful black model Donyale Luna was
memorably photographed by Richard Avedon for
American Vogue, December 1966 wearing a similar
dress

30 000 / 50 000 €



102.

103. LANVIN BY JULES-FRANÇOIS CRAHAY

Une robe en taffetas de soie noire,
vers 1968

A black silk taffeta dress, circa 1968
labelled, with ruffled edges to sleeves, hem and
front panel, with matching belt, bust 86cm 34in,
waist 76cm 30in

350 / 500 €

[Photo du lot sur notre site](#)

106. MADAME GRÈS

Un manteau en laine écarlate,
fin des années 1960

A scarlet wool coat, late 1960s
labelled, with Peter Pan collar, red celluloid
buttons to neck and pocket flaps, yoke panel to
front, chest 112cm 44in

300 / 500 €

[Photo du lot sur notre site](#)

104. PIERRE CARDIN

Une robe en laine orange,
circa 1968

An orange wool dress, circa 1968
labelled, with ovoid pocket opening to bust and
hip joined with bands of topstitching, bust 88cm

300 / 500 €

[Photo du lot sur notre site](#)

107. PIERRE CARDIN HAUTE COUTURE

Une robe du soir en gaze de soie noire à étages,
fin des années 1960-début des années 1970

A tiered black silk gauze evening dress,
late 1960s-early 1970s
labelled, with cascading frilly layers edged in
black lace, the bodice elasticated around upper
edge, bust 86cm 34in

600 / 1000 €

[Photo du lot sur notre site](#)

105. CHRISTIAN DIOR

Un chapeau en velours noir et orné de plumes,
années 1960

A black velvet and feather hat, 1960s
Licence Chapeaux labelled, with a flurry of
black and white feathers radiating from sides,
two black velvet bows to front, integral comb
and wire head supports, internal circumference
approx 42cm 16.6in

200 / 300 €

[Photo du lot sur notre site](#)

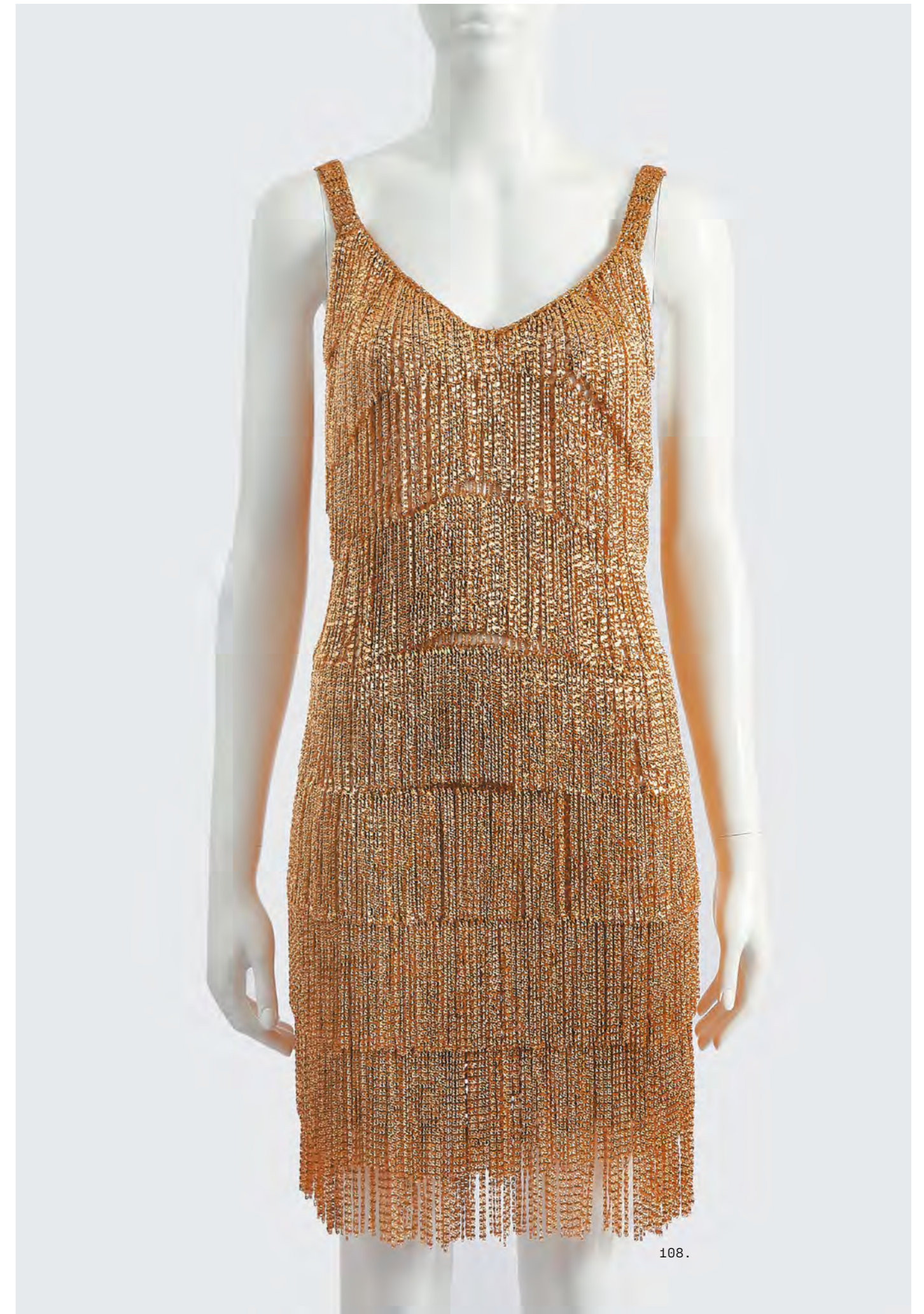
108. LORIS AZZARO

Une robe à franges en chaîne de couleur or,
circa 1971

A gold tone chain-fringed dress, circa 1971
labelled, the crocheted gold lurex ground applied
with cascading tiers of gold toned metal chain
fringes, bust 86cm 34in

Tina Turner wore an almost identical chain
fringed dress while performing at the Tulane
Stadium on 24 Oct 1970. She was dressed by Azzaro
for the majority of her stage appearances from
the late 60's to the mid 70's. The fringed chain
mini dress became a signature look for her - the
chains swaying with the movement of her body as
she performed.

800 / 1200 €



108.



109.

109. HUBERT DE GIVENCHY HAUTE COUTURE
Un costume trois pièces en soie ivoire imprimée, Printemps-Eté 1972

A printed ivory slubbed silk three-piece suit, Spring-Summer 1972
hand labelled and '114 Erika Carmen' labels, comprising: jacket, trousers and halterneck top, all printed with the names of colours in French that 'announce their colour', the top gathered by a band at the front, jacket bust 102cm 40in; halterneck bust, 79cm 31in, trouser waist 66cm 26in (3)

There are images of Hubert de Givenchy working with similarly printed fabric in his studio at the time. This print was used extensively in the collection.
This ensemble is documented in Givenchy Catwalk: The Complete Collections, 2023, Thames and Hudson, London p. 244

800 / 1200 €

110. CHRISTIAN DIOR HAUTE COUTURE
BY MARC BOHAN

Une veste en laine imprimée à double boutonnage, circa 1972

A printed wool double-breasted jacket circa 1972 Patron Original labelled, numbered 71883, printed in red leaving small spots of unprinted ecru ground, with rounded lapels, ridged red celluloid buttons, patch pockets, bust 102cm 40in

200 / 300 €

[Photo du lot sur notre site](#)

111. YVES SAINT LAURENT
Un ensemble en coton imprimé floral, Printemps-Eté 1977

A floral printed cotton ensemble, Spring-Summer 1977
Rive Gauche labelled, comprising: a quilted jacket with brown braided edges, domed buttons, size 18, bust 86cm 34in; a similarly printed blouse, size 38, bust 96cm 38in; a similarly printed pleated skirt, unlabelled, waist 66cm 26in (3)

500 / 700 €

[Photo du lot sur notre site](#)

112. YVES SAINT LAURENT HAUTE COUTURE
Une veste de soirée en brocatelle noire, Automne-Hiver 1988-89

A black brocatelle evening jacket, Autumn-Winter 1988-89
Labelled and model no. 88, inscribed Jody, Juksel, with padded shoulders, moulded black button front closure, side pockets, bust 86cm 34in

300 / 500 €

[Photo du lot sur notre site](#)

113. YVES SAINT LAURENT HAUTE COUTURE
Une veste en soie côtelée fuchsia, circa 1996

A fuchsia ribbed silk jacket, circa 1996 labelled and numbered 071102, with pleated leg o' mutton sleeves, bust approx 76cm 30in

400 / 600 €

[Photo du lot sur notre site](#)

114. PACO RABANNE HAUTE COUTURE
Une robe géométrique en laine grise, collection 'Kit', Printemps-Eté 1985

A geometric grey wool dress, 'Kit' collection, Spring-Summer 1985
labelled, the grey wool panels edged and backed in textured blue plastic, with long back panel with straps for neck, bust and hips, with large diamond panel to front, with two matching bracelets, bust 81cm 32in, hips 86cm 34in (3)

600 / 1000 €

[Photo du lot sur notre site](#)



115.

\$ 115. **VIVIENNE WESTWOOD**
 Une couronne en laine et fausse hermine,
 collection « Harris Tweed »,
 Automne-Hiver 1987-88

A wool and faux-ermine crown, 'Harris Tweed' collection, Autumn-Winter 1987-88 yellow on red woven label, designed by Stephen Jones, of red Scottish tweed with faux ermine band, lined in ivory satin, approx 53.5cm, 21in circumference

2000 / 3000 €



116.

116. **JEAN-CHARLES DE CASTELBAJAC**
 Un manteau ours en peluche en fausse fourrure verte,
 circa 1996

A green faux fur teddy bear coat, circa 1996 large black on yellow KO and CO label, with two large red stuffed teddy bears buttoned to chest, broad sailor collar with press-studs that can form a hood or be rolled and secured by red leather straps, lined in red brushed wool, chest approx 142cm 56in

1300 / 1600 €

117. JEAN-PAUL GAULTIER
Un manteau en laine bleue pour homme, collection
« Constructiviste (russe)/French Gigolo »,
Automne-Hiver 1986-87

A men's blue wool coat, 'Constructivist (Russian)/
French Gigolo' collection, Autumn-Winter 1986-87
Gibo Homme label, with 'Jean Paul' written in
Cyrillic text in black flocking to back, and an
abstract design to left elbow, large side patch
pockets and zipped chest pocket, Velcro front
closure, chest 132cm 52in

250 / 400 €

[Photo du lot sur notre site](#)

\$ 120. VIVIENNE WESTWOOD
Un manteau en fausse fourrure marron pour homme,
Automne-Hiver 1997-98

A men's brown faux-fur coat
Autumn-Winter 1997-98
gold on ivory label and portrait label, size
40, with large faux-horn orb buttons to front
and cuffs, angular sleeves, large patch pockets,
dolman sleeves, chest approx 102cm 40in

300 / 500 €

[Photo du lot sur notre site](#)

118. VIVIENNE WESTWOOD
Un gilet/veste Armour en tweed à carreaux de Vivienne
Westwood, collection « Time Machine »,
Automne-Hiver 1988-89

A Vivienne Westwood checked tweed Armour
waistcoat/jacket 'Time Machine' collection,
Autumn-Winter 1988-89
yellow on red woven label, size 36, with segmented
sleeves, one sewn on the other attached with a
leather strap and buckle, embroidered orb to one
shoulder, black velvet panel to left neckline,
chest 102cm 40in

800 / 1200 €

\$ 121. JEAN PAUL GAULTIER
Une veste courte pour homme et trois hauts en maille de
nylon imprimée, circa 1998

A men's cropped jacket and three printed nylon
mesh tops, circa 1998
The jacket of charcoal cotton canvas, lined in
yellow satin, with jetted flap pockets, Homme
label, size 40; one mesh top with buttons to
front printed with scenes of Mexico and Frida
Kahlo, green Maille label; another with black
knitted roll neck and cuffs, two-sided pocket to
front, printed with scenes of Mexico, Classique
label, both probably 'Frida Kahlo' collection,
S/S 98; the last printed with a portrait of JPG
as the centre of a 10,000 banknote, turquoise
Maille label, average chest 107cm 42in (4)

200 / 300 €

[Photo du lot sur notre site](#)

119. JEAN PAUL GAULTIER
Un rare blazer vert à paillettes pour homme,
collection « Punk Parisienne/House of Pleasures »,
Printemps-Eté 1997

A rare men's green sequined blazer, 'Punk
Parisienne/House of Pleasures' collection,
Spring-Summer 1997
Green on black Homme label, the muslin ground
entirely covered in shimmering green sequins,
with single pop fastener and muslin button cap,
patch pockets, chest 107cm 42in

300 / 500 €

[Photo du lot sur notre site](#)





122.

\$ 122. **VIVIENNE WESTWOOD**
Deux pantalons pour homme, fin des années 1990

A pair of men's MacAndreas tartan wool bondage trousers, late 1990s
Gold on ivory label, size 30, in seditionaries style with straps between legs, zips to back, gilt loops, buckles and buttons, waist 81cm 32in; together with a pair of brown and grey checked Lochcarron tweed matelot trousers, with drop front, faux horn orb buttons, gold on ivory label and portrait label, size 32, waist 86cm 34in (2)

400 / 600 €

\$ 123. **VIVIENNE WESTWOOD**
Une veste en nylon noir « Clint Eastwood » pour homme, Automne-Hiver 2003-04

A men's black nylon 'Clint Eastwood' jacket, Autumn-Winter 2003-04
Man label, size 48, with brown rib knit to collar, hem and cuffs, cargo pockets to shoulders, straps to sleeves, front zip closure, outsized

250 / 400 €

[Photo du lot sur notre site](#)

124. **JEAN-PAUL GAULTIER**
Un jean « à l'envers » pour homme, Printemps-Eté 2004

A pair of men's 'upside down' jeans, Spring-Summer 2004
JPG Jean's circle logo, size 30, the legs comprised of waist sections of jeans complete with pockets and zips, waist 86cm 34in

300 / 500 €

[Photo du lot sur notre site](#)



130.

KERRY TAYLOR CHEZ MAURICE À PARIS

125. MARTIN MARGIELA ARTISANAL
Une veste en daim marron pour homme,
Automne-Hiver 2006-07

A men's brown suede jacket,
Autumn-Winter 2006-07
0/10 label, with pale topstitching, internal
patch pockets, mock collar, chest approx
112cm 44in

500 / 700 €

[Photo du lot sur notre site](#)

128. COMME DES GARÇONS
Un blazer noir à coupe en spirale pour homme,
Automne-Hiver 2015-16

A men's spiral cut black whipcord blazer,
Autumn-Winter 2015-16
Homme Plus label, the fabric joined in a spiral
along body and sleeves creating pointed hems
and tilted cuff buttons, double-breasted, peaked
lapels, chest 107cm 42in

250 / 400 €

[Photo du lot sur notre site](#)

- \$ 126. COMME DES GARÇONS
Deux vestes pour homme,
des années 1990-2000

Two men's jackets 1990s-2000s
both Homme Plus labelled, the first of baby blue
nylon twill with flap pockets, cascading bands of
white broderie anglaise to lining, these jackets
were worn inside out on the runway, S/S 99, size
M, chest 112cm 44in; the other of green, white
and blue Argyll checked cotton serge, size L,
chest 107cm 42in (2)

250 / 400 €

[Photo du lot sur notre site](#)

129. MARTIN MARGIELA
Une robe violette pour homme,
années 2000-2010

An unusual men's purple dress, 2000s-2010s
10 label, of complex construction with drawstrings
forming neckline and scooped back, adjustable
size

500 / 700 €

[Photo du lot sur notre site](#)

- \$ 127. COMME DES GARÇONS
Un ensemble en soie écossaise imprimée pour homme,
Automne-Hiver 1999-2000

A men's printed tartan silk ensemble, Autumn-
Winter 1999-2000
Homme Plus label, size M, printed with tartan
patterns, armorials and knotted ropes, the jacket
lined in knitted wool with front zip closure; the
matching pleated kilt with brown leather side
straps, chest 107cm 42in, waist approx 91 cm 36in
adjustable by straps, (2)

300 / 500 €

[Photo du lot sur notre site](#)

130. JEAN-PAUL GAULTIER
Un pull en laine tricotée, collection
« Constructiviste (russe) »,
Automne-Hiver 1986-87

A knitted wool jumper, 'Constructivist (Russian)'
collection, Autumn-Winter 1986-87
Equator label, knitted with Cyrillic text designs
to front and arrow and stripes design to back
in blue grey and black tones, with polo neck,
cinches at the waist, chest approx 107cm 42in

The Cyrillic text translates to N. Aseev, a
reference to the Soviet poet Nikolai Aseev whose
1930 collection of selected poems had a cover
designed with bold text in a similar colourway

500 / 900 €

131. JEAN-PAUL GAULTIER

Une veste en cuir noir à manches courtes, années 1980

A black leather biker jacket, 1980s
Ghezzi label, size 42, with diagonal front zip closure, zip side pockets, patch front pocket, bust 91cm, 36in

200 / 300 €

[Photo du lot sur notre site](#)

132. MARTIN MARGIELA

Une veste asymétrique en laine noire, fin des années 80-début des années 90

An asymmetrical black wool jacket, late 1980s-early 90s
long Femme label, size 42, of unusual twisted construction, with single sleeve, lapels to front and back, buttons on left side, bust 86cm 34in

200 / 300 €

[Photo du lot sur notre site](#)

133. JEAN PAUL GAULTIER

Une robe imprimée en nylon extensible, collection « Tattoos », Printemps-Eté 1994

A printed cotton and stretch nylon dress, 'Tattoos' collection, Spring-Summer 1994
turquoise Maille label, size M, printed with banknote motifs and deep orange palm trees, with cotton 'vest' panels to front and back, nylon mesh side panels and sleeves, bust approx 81cm 32in

2000 / 3000 €

[Photo du lot sur notre site](#)

134. JEAN PAUL GAULTIER

Un ensemble en jean comprenant un pantalon et une veste, collection commerciale «Tattoos», Printemps-Eté 1994

A jacquard woven denim ensemble, 'Tattoos' commercial collection, Spring-Summer 1994
Jean's label, comprising: a blue jacket woven with tattoo designs, banknote motifs and branded black bands, patch chest pockets, bust 91 cm 36in ; a pair of matching jeans woven with constellations and astrological signs, waist 71cm 28in (2)

600 / 800 €

[Photo du lot sur notre site](#)

135. JEAN PAUL GAULTIER

Un ensemble en mesh imprimé comprenant un T-shirt à manches longues et un pantalon, collection «Tattoos», Printemps-Eté 1994

A printed nylon mesh ensemble, 'Tattoos' collection, Spring-Summer 1994
crown and star tattoos label and long green on black label, size 44, comprising: a long sleeved t-shirt and matching trousers, both printed with various tattoo designs, bust approx 86cm 34in, waist approx 66cm 26in (2)

400 / 600 €

[Photo du lot sur notre site](#)

136. JEAN PAUL GAULTIER

Un ensemble comprenant un body et un pantalon en mesh stretch, collection «Tattos», Printemps-Eté 1994

A printed nylon mesh ensemble, 'Tattoos' collection, Spring-Summer 1994
turquoise Maille label, comprising: a body and matching trousers, both printed with palm trees in deep orange tones, bust approx 71cm 28in, waist approx 42 cm (2)

300 / 500 €

[Photo du lot sur notre site](#)

137. JEAN PAUL GAULTIER

Une robe en nylon extensible Jean Paul Gaultier, collection « Mad Max », Automne-Hiver 1995-96

A Jean Paul Gaultier stretch nylon dress, 'Mad Max' collection, Autumn-Winter 1995-96
turquoise Maille label, with computer-generated spot-print to reflect the contours of the female form, in predominantly yellow, grey and green with burgundy print defining the inside legs, the centre-back applied with square panel enclosing a humanoid spot portrait, high neck, bust approx 86cm, 34in

2000 / 3000 €



137.



141.

138. JEAN-PAUL GAULTIER
Une robe en maille de nylon à imprimé tribal rouge, collection « Cyberbaba », Printemps-Eté 1996

A red tribal print nylon mesh dress, 'Cyberbaba' collection Spring-Summer 1996
Maille label, with unfinished hem and cuffs, wide neckline, bust 80cm approx

500 / 700 €

[Photo du lot sur notre site](#)

139. JEAN-PAUL GAULTIER
Une robe à capuche en maille de nylon imprimée, années 2000

A hooded printed nylon mesh dress, 2000s
Soleil label, size L, printed in orange with tropical scenes and architectural details, with elasticated bands to sleeve openings and pockets, drawstring waist, outsized

250 / 400 €

[Photo du lot sur notre site](#)

140. JEAN-PAUL GAULTIER
Une robe en rayonne imprimée rouge et verte, collection « Louise Brooks Meets Easy Rider », Printemps-Eté 2001

A red and green printed rayon dress, 'Louise Brooks Meets Easy Rider' collection, Spring-Summer 2001
Femme label, size GB 12, the abstract geometric print creating face-like forms in places, with knotted shoulder straps, flared hem, bust 86cm 34in

300 / 500 €

[Photo du lot sur notre site](#)

141. JEAN-PAUL GAULTIER
Une rare veste en cuir peinte à la main et ornée de pochoirs, collection « Louise Brooks Meets Easy Rider », Printemps-Eté 2001

stencilled on the back with the Elle logo in spraypaint, with studs to lapel and epaulette, chest approx 102cm 40in

It is believed this was a press sample sent to Elle Spain to be used to promote the collection. As vintage jackets and hand embellishments were used for the few of the garments that were made, each one is unique

400 / 600 €

142. JEAN PAUL GAULTIER FRANÇAIS
Printemps-Eté 2001

A 'Constellation' dress, 'Louise Brooks Meets Easy Rider' collection, Spring-Summer 2001
Maille label, comprising: a knitted black nylon top with long ties at sides with integral white skirt printed with constellations that form faces, with ties to waistline, bust 80cm approx (légèrement extensible), waist 80cm approx (légèrement extensible)

300 / 500 €

[Photo du lot sur notre site](#)

143. THIERRY MUGLER
Un plastron « Victoire/Victory » en fibre de verre moulée,
1979

A moulded fibreglass 'Victoire/Victory'
breastplate, 1979
gold on brown Paris label, moulded with the
sculptor's name 'D Roux', of moulded bronze-
effect fibreglass, lined in brown suede, with
metallic gold leather back-straps, adjustable
size

These 'Victoire' evening ensembles were displayed
in Mugler's rue Victoire boutique in Paris in
1979.

On the runway this look was modelled by Jerry
Hall. It is one of the earliest and most iconic
of Mugler's creations.
A complete ensemble was sold last year at Kerry
Taylor x Maurice for 58,500EUR

15 000 / 25 000 €

144. THIERRY MUGLER
Une jupe « Victoire/Victory »
en mousseline de soie marron, 1979

A brown chiffon 'Victoire/Victory' skirt, 1979
gold on brown Paris label, with handkerchief
pleats falling from waistband, waist 66cm 26in

2000 / 3000 €

[Photo du lot sur notre site](#)

143.





145.

145. **THIERRY MUGLER**
Un ensemble en lamé or, collection « Spirale Futuriste », Automne-Hiver 1979-80

A gold lamé ensemble, 'Spirale Futuriste' collection Autumn-Winter 1979-80 gold on brown Paris label, the gold ground printed with abstract designs in black, yellow and orange, the dress with deep v neck, pointed lapels, pleated skirt, weighted hem, bust 96cm 38in; the matching trousers with elasticated waist, waist max 91 cm 36in (3)

800 / 1200 €

146. **THIERRY MUGLER**
Une veste en soie asymétrique, années 1980

An Ivory silk jacket, 1980s blue label, size 38, with cutouts to lapels and peplum, pop-fasteners to front, bust 112cm 44in

200 / 400 €

[Photo du lot sur notre site](#)

147. **THIERRY MUGLER**
Une robe en coton imprimé zébré marron et beige, Printemps-Eté 1983

A brown and beige zebra print cotton smock dress, Spring-Summer 1983 blue Paris label, of outsized proportions, with full length lacing to back and laced kick splits at sides, high collar, trapezoid sleeves, outsized

200 / 300 €

[Photo du lot sur notre site](#)

148. **THIERRY MUGLER**
Une veste en laine bleue, vers 1992

A blue wool jacket, circa 1992 blue label, size 42, collar and cuffs edged with stamped metal plates, matching waist buckle, with curved and pointed lapels, pointed hem, bust approx 107 cm 42in

350 / 500 €

[Photo du lot sur notre site](#)

149. **THIERRY MUGLER**
Un ensemble comprenant une robe et une veste en velours noir, années 1990

A black velvet ensemble, 1990s blue label, comprising: a black velvet jacket with integral bowtie, triangular cutout to bust and corresponding removable pleated panel, stand collar, size 40, bust 100 cm; the matching dress of black viscose with undulating black velvet sides, velvet bow to back, size 38, bust 91 cm (2)

350 / 550 €

[Photo du lot sur notre site](#)

150. **THIERRY MUGLER**
Une veste du soir en laine noire et perles brodées, années 1990

An embellished black wool jacket, 1990s blue label, size 42, with central satin panel encrusted with black faceted stones, bugle beads and silver sequins, pop-button closure, nipped waist, self-covered button caps, bust 104 waist 80 cm

200 / 400 €

[Photo du lot sur notre site](#)

151. **THIERRY MUGLER**
Une robe longue en coton blanc, années 1990

A white piqué cotton dress, 1990s blue label, size 42, with crossover straps, pleated train, bust 88cm

300 / 500 €

[Photo du lot sur notre site](#)

152. **THIERRY MUGLER**
Une robe de soirée en crêpe blanc, début des années 2000

A white crêpe evening gown, early 2000s blue couture label, size 38, with mirror-like triangular motifs to bodice and scattered at the waist, side slit to skirt, still with shop tags, bust 81cm 32in

800 / 1200 €

[Photo du lot sur notre site](#)

153. **HERVÉ LEGER ET BALMAIN**
Trois robes bodycon en viscose,
fin des années 1980-90

Three viscose bodycon dresses, late 1980s-90s
all labelled, comprising: a Balmain example of
alternating horizontal bands of baby pink ribbed
jersey and sheer tulle mesh, with white straps,
size 38; a grey Hervé Léger bandage dress with
jersey skirt gathered at waist, size M; a pink
Hervé Léger example with ribbing to waist,
size S, average bust 81cm 32in (3)

300 / 500 €

[Photo du lot sur notre site](#)

154. **AZZEDINE ALAIA**
Trois ensembles bodycon en viscose,
circa 1990

Three viscose bodycon ensembles circa 1990
all labelled, comprising: a cream dress with
pleated hem, size M; a beige body with triangular
ribbed panels, with matching skirt with pleated
hem, size S, both Spring-Summer 1990 ; a brown
body with scalloped straps, with matching skirt
with scalloped hem, Size M, average
bust 86cm 34in, average waist 71cm 28in (5)

300 / 500 €

[Photo du lot sur notre site](#)

155. **HERVÉ LEGER**
Deux robes bodycon en viscose,
années 1990

Two viscose bodycon dresses, 1990s
both labelled and size F3, the first of acid
yellow with alternating strips of ribbed fabric,
sheer panel to bust; the second of aubergine
jersey with ribbed bodice, busts approx
81cm 32in (2)

250 / 400 €

[Photo du lot sur notre site](#)

156. **GIANNI VERSACE**
Une robe en laine noire et vison,
années 1990

A black wool and mink dress, 1990s
Couture labelled, size 40, the edges and
contoured seams trimmed with deep brown mink,
bust 91cm 36in

200 / 300 €

[Photo du lot sur notre site](#)

157. **GIANNI VERSACE**
Un ensemble imprimé de coquillages,
Printemps-Eté 1992

A shellfish printed ensemble, Spring-Summer 1992
labelled, comprising: a white cotton drill jacket
printed with starfish and scallops to front, the
sleeves and back printed with baroque designs,
with gilt medusa mask buttons, bust 102cm 40in;
with a matching stretch nylon shift dress, size
44, bust approx 86cm 34in (2)

600 / 1000 €



157.

158. YOHJI YAMAMOTO
Une veste en lin mélangé,
probablement Printemps-Eté 1983

An early linen blend jacket,
probably Spring-Summer 1983
brown label, size M, constructed of contrasting
panels of striped and plain fabric, of outsized
proportions, with shoulder pads, shawl collar,
pop fasteners to front, chest 122cm 48in

300 / 500 €

[Photo du lot sur notre site](#)

159. YOHJI YAMAMOTO
Une robe en coton tie dye,
années 1980

A tie dye cotton dress, 1980s
labelled, size M, of complex construction with
wrap around panel and drapes fastened with
buttons, the fabric forming a bustle on the left
side, bust approx 86cm 34in

The owner believes this dress is a one of a kind
example

300 / 500 €

[Photo du lot sur notre site](#)

160. YOHJI YAMAMOTO
Une queue de pie en laine noire,
années 1980

A black wool tailcoat, 1980s
labelled and Solis label, size M, with large
draped scoop to back that gathers into a bustle,
shoulder pads, eyelets woven to front - presumably
for laces, bust 91cm 36in

300 / 500 €

[Photo du lot sur notre site](#)

161. YOHJI YAMAMOTO
Une rare jupe en bois lambrissée,
Automne-Hiver 1991-92

A rare panelled wooden skirt,
Autumn-Winter 1991-92
labelled, size S, with black felted wool
waistband, with zip fastener and side buckles
for adjustment, overlaid with hinged and bolted
wooden skirt gores connected with metal hinges,
waist 71cm 28in; together with a pair of brushed
wool boots, probably from the same collection,
size L, length 24cm 9.5in (3)

4000 / 6000 €





166.

162. **COMME DES GARÇONS**
Un ensemble en crêpe tacheté noir et blanc, collection « Lilith », Automne-Hiver 1992-93

A black and white spotted crêpe ensemble, 'Lilith' collection, Autumn-Winter 1992-93 gold on black labels, size S, comprising : a loose-fitting jacket with wide notched lapel neckline, single button to front, oversized; a matching pleated skirt with floating panel to waist, waist 66 cm 26in (2)

300 / 500 €

[Photo du lot sur notre site](#)

163. **ISSEY MIYAKE**
Un manteau en polyester plissé marron, Printemps-Eté 1995

A brown pleated polyester coat, Spring-Summer 1995 labelled, size M, of oversized proportions, deeply pleated in chevrons that meet at the seams, with single button to collar

200 / 300 €

[Photo du lot sur notre site](#)

164. **COMME DES GARÇONS**
Un ensemble en crêpe marron, collection « Sweeter Than Sweet », Automne-Hiver 1995-96

A brown crêpe suit, 'Sweeter Than Sweet' collection, Autumn-Winter 1995-96 labelled, size S, comprising: a jacket with elaborate ruffled chiffon and lace neckline, bust 81cm 32in; the matching skirt with pleated wrap panel, self-tie waistband, adjustable waist (2)

200 / 300 €

[Photo du lot sur notre site](#)

165. **ISSEY MIYAKE PLEATS PLEASE**
Une tunique plissée en polyester avec une image de Yasumasa Morimura, Guest Artists Series, No 1, 1996

A pleated polyester tunic with image by Yasumasa Morimura, Guest Artists Series, No 1, 1996 Guest Artist Series No.1 label, size 4, the front side printed with part of Jean Auguste Dominique Ingres' 1856 painting 'La Source', with an inverted photographic image of Morimura embracing the depicted figure

500 / 700 €

[Photo du lot sur notre site](#)

166. **ISSEY MIYAKE PLEATS PLEASE**
Une robe plissée en polyester « Appear » avec image de Nobuyoshi Araki, Guest Artists Series No. 2, 1997

A pleated polyester 'Appear' dress with image by Nobuyoshi Araki, Guest Artists Series No. 2, 1997 Guest Artist Series No.2 label, size F, printed to front and back with a photograph of a Japanese girl and Araki's signature

For his Guest Artist series Araki made two kinds of prints. 'Appear' in which his photographs were printed onto fabric before it was pleated, and 'Disappear' where they were printed once the pleating process had been completed. Each would be more or less abstracted depending on if the clothes were being worn or not

500 / 700 €

167. **ISSEY MIYAKE PLEATS PLEASE**
Une blouse plissée en polyester avec une image de Tim Hawkinson, Guest Artists Series No 3, 1998,

A pleated polyester smock with image by Tim Hawkinson, Guest Artists Series No 3, 1998, Guest Artist Series No.3 label, size F, of voluminous wide cut, printed to the front with a black lattice enclosing a stylised nude male figure in shades of grey, the sleeves and back of silver pleated fabric

300 / 500 €

[Photo du lot sur notre site](#)



168. ISSEY MIYAKE PLEATS PLEASE
 Une robe plissée à manches longues en polyester avec image de Tim Hawkinson, Guest Artist Series No.3, 1998

A pleated polyester long-sleeved dress with image by Tim Hawkinson, Guest Artist Series No.3, 1998 Guest Artist No.3 label, size F, the front printed with a 'Bathtub-generated' self portrait of the artist

The print is based on an original piece by Tim Hawkinson from 1995. The artist lay down in a bathtub, slowly filling it with black watercolour paint and subsequently photographed his body every few minutes. By layering the images it resulted in the lace-like effect depicted on the dress

1000 / 1500 €

Issey Miyake has always been considered a key figure of fashion's Avant Garde; perpetually experimenting with form and material structure his fashion shows shocked and delighted audiences throughout the 1970s, 80s and beyond. He had studied at the Syndicale de la Haute Couture before training with Hubert de Givenchy. However, unlike many of his peers who sought refinement from rarity, he understood how in an increasingly industrialised and global cultural environment, democratic clothing was the missing link between beauty and practicality.

His investigations with pleating in the late 1980s developed into a collaboration with the choreographer William Forsythe in 1991 for Ballett Frankfurt's 'The Loss of Small Detail'. Through this partnership, certain parameters arose through which a wealth of creativity began to flow. The clothes needed to be beautiful, functional, hard wearing and within budget - rules, it became clear, that were relatable to fashion buyers everywhere. Upon seeing the dancers' freedom and joy of movement in these newly pleated garments Miyake knew he had found his "most valuable contribution to "design," and two years later PLEATS PLEASE was born.

Miyake began with the very fundamentals of design. He worked with several factories in Japan to develop antistatic lightweight polyester fibres that were knitted together according to specific directions and then, only once the garment had been fully constructed, they were finely pleated at high temperatures to create clothes that were uniform, wouldn't crease, were machine washable and moved with the body in a new ethereal way. The choice of polyester was revolutionary. Though considered cheap, Miyake praised its functional properties and by mastering its use he was able to transform the prosaic into the profound. It was design over pretension in its purest form.

The clothes are therefore philosophical at their core, existing in a space in which industrial production and organic irregularity collide. Each pleat is a repetition of sameness forming a basic fabric that remains uniform



from one collection to the next, yet, when worn, each becomes a unique expression of individuality. Their movement and spirit are dictated by the wearer, the pleats swelling and contracting with the body like a cycle of breath. By allowing air to fill the space between body and cloth, the wearer reveals the materiality of clothes and the clothes in turn reveal the personality of the wearer. Anyone can wear Issey and, like his repeated pleated lines, his clothes create a connection that crosses borders, sizes, genders and race, yet they also celebrate individuality in a world homogenised by globalisation. PLEATS PLEASE anticipated the future we now live in.

The success of the basic pleated structure meant that little needed to change in their basic formation. Over the decades this constancy allowed the garments themselves to become a vessel for creativity, forming a blank canvas for creative collaborations with both famous artists and unsung creatives and graphic designers.

His notable Guest Artist Series began in 1996 with Japanese conceptual artist Yasumasa Morimura famous for inserting himself into the artwork of others to explore themes of art and identity. His PLEATS PLEASE collaboration saw the artist cloaked in a scarlet mesh embracing a figure from Jean Auguste Dominique Ingres' 1856 painting 'La Source'. As a garment the artwork took on a new conceptual level, allowing the wearer to physically insert themselves into it, becoming an embodiment of and participator in the work itself.

In 1997 Miyake collaborated with notorious artist Noboyushi Araki, a photographer whose often pornographic work deals with life, passion, pain and death. For this collaboration Miyake selected images of flowers as well as Japanese women in various poses of submission, vulnerability, power and nudity. Araki made two kinds of prints: 'Appear' in which his photographs were printed onto fabric before it was pleated, and 'Disappear' where they were printed once the pleating process had been completed. Each would be more or less abstracted depending on if the clothes were being worn or not.

His next guest artist, Tim Hawkinson deals with the body and its representation. The prints often using self-portraiture as a starting point before abstracting them through novel use of digitisation or organic distortion. For example, for one design the artist lay down in a bathtub, slowly filling it with black watercolour paint and subsequently photographing his body every few minutes. By layering the images it resulted in a lace-like effect that recalled both fabric and the human form.

Finally, Cai Guo Qiang whose monumental and ephemeral works use traditional Chinese fireworks to create dramatic displays, the remnants of which can be scorched onto canvases as if to capture a single moment in time that resonates with the artist's own cultural history. To create these clothes, the artist laid hundreds of garments on the floor and ignited patterns of gunpowder that formed dragons and abstract motifs on each. These original garments were then adapted into the prints we see on the clothes today.

We are lucky to be able to offer at auction examples from not only each one of these important Guest Artist Series, but also the very best designs from lesser-known creatives whose resulting garments have become some of the most sought after on the market today. The structure of these clothes often taking on novel designs that are quintessential of the playful hand of Mr Miyake; laid flat, dresses become dinosaurs and picnic blankets, cleverly cut so that each protruding element becomes an elegant, pointed edge or drape, masterfully thought out to create a stunning symmetry in the worn design. There is a huge breadth of incredible pleated garments here, each one imbued with that special essence of what Miyake stands for - a certain joie de vivre that could only have come to fruition through the philosophical elegance of his work process and his generosity in working closely with others.

Issey Miyake a toujours été considéré comme une figure clé de l'avant-garde de la mode; il a constamment expérimenté avec les formes et les structures des matériaux, choquant et ravissant les spectateurs tout au long des années 1970, 1980 et au-delà. Il avait étudié à la Syndicale de la Haute Couture avant de se former auprès d'Hubert de Givenchy. Cependant, contrairement à beaucoup de ses pairs qui recherchaient le raffinement par la rareté, il a compris comment, dans un environnement culturel de plus en plus industrialisé et globalisé, les vêtements démocratiques étaient le chaînon manquant entre beauté et praticité.

Ses recherches sur les plissés à la fin des années 1980 ont évolué vers une collaboration avec le chorégraphe William Forsythe en 1991 pour « The Loss of Small Detail » de Ballett Frankfurt. À travers ce partenariat, certains paramètres ont émergé permettant une grande créativité. Les vêtements devaient être beaux, fonctionnels, résistants et respecter le budget - des règles qui, s'est-il avéré, étaient compréhensibles pour les acheteurs de mode partout. En voyant la liberté et la joie de mouvement des danseurs dans ces nouveaux vêtements plissés, Miyake a su qu'il avait trouvé sa « contribution la plus précieuse au «design» » et deux ans plus tard, PLEATS PLEASE est né.

Miyake a commencé avec les fondements mêmes du design. Il a collaboré avec plusieurs usines au Japon pour développer des fibres de polyester légères et antistatiques, tricotées selon des directives spécifiques, puis, une fois le vêtement entièrement construit, il était finement plissé à haute température pour créer des vêtements uniformes, sans plis, lavables en machine et épousant le corps de manière nouvelle et éthérée. Le choix du polyester était révolutionnaire. Bien que considéré comme bon marché, Miyake en a loué les propriétés fonctionnelles et, en maîtrisant son utilisation, il a pu transformer le prosaïque en le profond. C'était le design sur la prétention dans sa forme la plus pure.

Les vêtements sont donc philosophiques en leur essence, existant dans un espace où la production industrielle et l'irrégularité organique se rencontrent. Chaque pli est une répétition de la même chose, formant un tissu de base qui reste uniforme d'une collection à l'autre, mais, lorsqu'il est porté, chaque pièce

devient une expression unique de l'individualité. Leur mouvement et leur esprit sont dictés par le porteur, les plis gonflant et se contractant avec le corps comme un cycle de respiration. En permettant à l'air de remplir l'espace entre le corps et le tissu, le porteur révèle la matérialité des vêtements et les vêtements, en retour, révèlent la personnalité du porteur. Tout le monde peut porter du Issey et, comme ses lignes plissées répétées, ses vêtements créent une connexion qui traverse les frontières, les tailles, les genres et les races, tout en célébrant l'individualité dans un monde homogénéisé par la mondialisation. PLEATS PLEASE anticipait le futur que nous vivons aujourd'hui.

Le succès de la structure plissée de base a signifié que peu de choses devaient changer dans leur formation de base. Au fil des décennies, cette constance a permis aux vêtements eux-mêmes de devenir un vecteur de créativité, formant une toile blanche pour des collaborations créatives avec à la fois des artistes célèbres et des créatifs méconnus ainsi que des graphistes.

Sa notable série d'invités artistes a commencé en 1996 avec l'artiste conceptuel japonais Yasumasa Morimura, célèbre pour s'insérer dans les œuvres d'art d'autres artistes pour explorer les thèmes de l'art et de l'identité. Sa collaboration PLEATS PLEASE a vu l'artiste enveloppé dans un filet écarlate, embrassant une figure de la peinture 'La Source' de Jean Auguste Dominique Ingres de 1856. En tant que vêtement, l'œuvre a pris un nouveau niveau conceptuel, permettant au porteur de s'y insérer physiquement, devenant ainsi une incarnation et un participant à l'œuvre elle-même.

En 1997, Miyake a collaboré avec l'artiste controversé Nobuyoshi Araki, un photographe dont le travail souvent pornographique traite de la vie, de la passion, de la douleur et de la mort. Pour cette collaboration, Miyake a sélectionné des images de fleurs ainsi que des femmes japonaises dans diverses poses de soumission, de vulnérabilité, de pouvoir et de nudité. Araki a créé deux types d'impressions : 'Appear' dans lesquelles ses photographies étaient imprimées sur le tissu avant le plissage, et 'Disappear' où elles étaient imprimées une fois le processus de plissage terminé. Chacune devenait plus ou moins abstraite selon que les vêtements étaient portés ou non.

Son prochain artiste invité, Tim Hawkinson, travaille sur le corps et sa représentation. Les impressions utilisent souvent l'autoportrait comme point de départ avant de les abstraire grâce à une utilisation novatrice de la numérisation ou de la distorsion organique. Par exemple, pour une conception, l'artiste s'est allongé dans une baignoire, la remplissant lentement de peinture aquarelle noire, et a ensuite photographié son corps toutes les quelques minutes. En superposant les images, il en résultait un effet semblable à de la dentelle qui rappelait à la fois le tissu et la forme humaine.

Enfin, Cai Guo-Qiang, dont les œuvres monumentales et éphémères utilisent les feux d'artifice traditionnels chinois pour créer des spectacles dramatiques, les restes étant brûlés sur des toiles comme pour capturer un moment unique dans le temps, résonnant avec la propre histoire culturelle de l'artiste. Pour créer ces vêtements, l'artiste a disposé des centaines de vêtements sur le sol et a enflammé des motifs de poudre à canon formant des dragons et des motifs abstraits sur chacun. Ces vêtements originaux ont ensuite été adaptés aux impressions que nous voyons sur les vêtements aujourd'hui.

Nous avons la chance de pouvoir proposer aux enchères des exemples non seulement de chacune de ces importantes séries d'invités artistes, mais aussi des meilleurs modèles de créatifs moins connus dont les vêtements résultants sont devenus parmi les plus recherchés sur le marché aujourd'hui. La structure de ces vêtements prenant souvent des designs nouveaux typiques de la main joueuse de M. Miyake; à plat, les robes deviennent des dinosaures et des nappes de pique-nique, astucieusement découpées de sorte que chaque élément saillant devient un bord ou un drapé élégant, conçu de manière magistrale pour créer une symétrie saisissante dans le design porté. Il existe une grande variété de vêtements plissés incroyables ici, chacun imprégné de cette essence spéciale de ce que représente Miyake - une certaine joie de vivre qui n'a pu se réaliser que grâce à l'élégance philosophique de son processus de travail et à sa générosité à collaborer étroitement avec les autres.



169. ISSEY MIYAKE PLEATS PLEASE
Une combinaison plissée en polyester « Eye Globe » avec image de Tim Hawkinson, Guest Artists Series No. 3, 1998

A pleated polyester 'Eye Globe' jumpsuit with image by Tim Hawkinson, Guest Artists Series No. 3, 1998
Guest Artist Series No.3 label, size 4, the beige ground printed with eyes of different hues, low set crotch

2000 / 3000 €

170. ISSEY MIYAKE PLEATS PLEASE
Un ensemble en polyester plissé avec une image de Cai Guo Qiang, artiste invité, série n° 4, 1998

A pleated polyester ensemble with image by Cai Guo Qiang, Guest Artist, Series No.4, 1998
Guest Artist Series No.4 label, comprising a long vest top, size 5, and matching trousers with elasticated waist, size 4, with all over speckled brown print imitating gunpowder smoke/ ash (2)

200 / 300 €

[Photo du lot sur notre site](#)

171. ISSEY MIYAKE PLEATS PLEASE
Un ensemble en polyester plissé, années 1990-2000

A pleated polyester ensemble, 1990s-2000s labelled, comprising: a pair of Cai Guo-Qiang Guest Artists Series 4 'dragon explosion bullet' trousers, 1998, with elasticated waistband; a collared t-shirt printed with French roadmaps, 2005, size 3 (2)

250 / 400 €

[Photo du lot sur notre site](#)

169.

172. ISSEY MIYAKE PLEATS PLEASE
Une robe de soirée plissée en polyester « Spiral » avec image de Cai Guo Qiang, Guest Artist Series No.4, 1998

A pleated polyester 'Spiral' evening dress with image by Cai Guo Qiang, Guest Artist Series No.4, 1998
Guest Artist Series No.4 label, size 4, the body and sleeves cut in joined spirals of pleated fabric, with all over speckled brown print imitating gunpowder smoke/ash

300 / 500 €

[Photo du lot sur notre site](#)

173. ISSEY MIYAKE PLEATS PLEASE
Un ensemble en polyester plissé avec une image de Cai Guo Qiang, Guest Artist Series No.4, 1998

A pleated polyester ensemble with image by Cai Guo Qiang, Guest Artist Series No.4, 1998
Guest Artist Series No.4 label, comprising: vest top, size 4 and matching trousers with elasticated waistband, size 5 with all over speckled brown print imitating gunpowder smoke/ash (2)

250 / 400 €

[Photo du lot sur notre site](#)

174. ISSEY MIYAKE PLEATS PLEASE
Une robe plissée en polyester « gunpowder » avec image de Cai Guo Qiang, artiste invité, série n° 4, 1998

A pleated polyester 'gunpowder' dress with image by Cai Guo Qiang, Guest Artist, Series No.4, 1998
Guest Artist Series No.4 label, with abstract gunpowder trail print to front and back, high neckline, long splits to skirt sides

700 / 1000 €

[Photo du lot sur notre site](#)

175. ISSEY MIYAKE PLEATS PLEASE
Un ensemble « Moon Landing » en polyester plissé, probablement 1999

A pleated polyester 'Moon Landing' ensemble, probably 1999
Pleats Please label, size 4, comprising: vest top and matching trousers with elasticated waistband, printed with a depiction of the Apollo moon landing in 1969 (2)

200 / 300 €

[Photo du lot sur notre site](#)

176. ISSEY MIYAKE PLEATS PLEASE
Un ensemble plissé en polyester, 1999

A pleated polyester ensemble, 1999
Pleats Please label, size 4, comprising: a blouse with rolled collar, wooden buttons; and matching vest top, both printed with colourful animal figures and text on blue ground

Similarly printed ensembles are photographed by Francis Giacobetti in Midorie Kitamura et al, Pleats Please Issey Miyake, Taschen, Cologne, 2012, p.150-151

250 / 450 €

[Photo du lot sur notre site](#)

177. ISSEY MIYAKE PLEATS PLEASE
Une robe plissée en polyester « Amazing Detective », 1999

A pleated polyester 'Amazing Detective' dress, 1999
Pleats Please label, size 3, printed to the front and side with the title 'Issey Miyake, Amazing Detective', a burning car, banknotes and comic figures saying «Pleats Please» and «...But Darling», with black back panel

300 / 500 €

[Photo du lot sur notre site](#)

178. ISSEY MIYAKE PLEATS PLEASE
Un ensemble en polyester imprimé, 2001

A printed polyester ensemble, 2001
Pleats Please label, size 4, printed with colourful cartoon figures listening to music, comprising: a jacket with high neck and two-way front zip closure; a matching skirt with wrap around front panel that can alternatively be left to drape at the side (2)

300 / 500 €

[Photo du lot sur notre site](#)

179. ISSEY MIYAKE PLEATS PLEASE
Une robe plissée en polyester, 2001

A pleated polyester dress, 2001
Pleats Please label, printed with colourful cartoon figures listening to music, with high neck, the back of blue fabric

A near identical dress is photographed by Francis Giacobetti in Midorie Kitamura et al, Pleats Please Issey Miyake, Taschen, Cologne, 2012, p.172

400 / 600 €

[Photo du lot sur notre site](#)

180. ISSEY MIYAKE PLEATS PLEASE
Deux hauts en polyester imprimé, circa 2001

Two printed polyester tops, circa 2001
Pleats Please label, size 4, comprising: a blue short sleeved t-shirt; and a yellow sleeveless vest, both printed with figures, African wildlife and phrases in French (2)

200 / 300 €

[Photo du lot sur notre site](#)

181. ISSEY MIYAKE
Une robe en polyester plissé beige, circa 2002

A beige pleated polyester dress, circa 2002
labelled, size 3, with subtly undulating pleats creating a wave-like effect

200 / 300 €

[Photo du lot sur notre site](#)

182. YOHJI YAMAMOTO
Une soutane en gabardine noire à corset, circa 2001

A black gabardine corseted cassock coat, circa 2001
labelled, size 3, with integral boned corset, slit to back revealing corset lacing, stand collar, hook and loop fasteners to front, chest 102cm 40in, waist 71cm 28in

600 / 1000 €

[Photo du lot sur notre site](#)

183. COMME DES GARÇONS
Une veste à double épaisseur en coton mélangé gris et noir, collection « Extreme Embellishment (Adornment) », Printemps-Eté 2003

A double layered grey and black cotton blend jacket, 'Extreme Embellishment (Adornment)' collection, Spring-Summer 2003
labelled, size S, with chunky plaits of fabric running down the front, frayed edges, the interior black layer extended down below the waist, no fasteners, bust approx 86cm 34in

250 / 400 €

[Photo du lot sur notre site](#)



184. **ISSEY MIYAKE PLEATS PLEASE**
Deux tops plissés en polyester
années 2000

Two pleated polyester tops 2000s
Pleats Please label, the black example cut
to resemble a leaf when laid flat, when worn
the pointed ends become the shoulder and hem
creating a draped asymmetrical look, size F;
the white shirt with additional layer of white gauze
to exterior, with single faux-mother of pearl
button, size 5 (2)

200 / 300 €

[Photo du lot sur notre site](#)

185. **ISSEY MIYAKE PLEATS PLEASE**
Un ensemble en maille de polyester noir plissé,
2004

A pleated black polyester mesh ensemble, 2004
Pleats Please label, size 5, comprising: a dress
with short sleeves, rounded skirt, pointed hem;
a matching jacket with pointed hem and neckline,
rounded sleeves, front button closure (2)

250 / 450 €

[Photo du lot sur notre site](#)

186. **ISSEY MIYAKE PLEATS PLEASE**
Une robe plissée en polyester,
probablement 2005

A pleated polyester dress, probably 2005
Pleats Please label, size 3, printed with
floral designs, the panels pleated in different
directions, with wide skirt, pointed sides to
hem

300 / 500 €

[Photo du lot sur notre site](#)

187. **ISSEY MIYAKE PLEATS PLEASE**
Une robe plissée en polyester,
probablement 2005

A pleated polyester dress, probably 2005
Pleats Please label, size 3, with joined
colourful bands to hem and high neckline, the
thin bands at hem joined with a lattice of white
topstitching

200 / 300 €

[Photo du lot sur notre site](#)

188. **ISSEY MIYAKE PLEATS PLEASE**
Une robe plissée en polyester,
circa 2005

A pleated polyester dress, circa 2005
Pleats Please label, size 4, printed with kitchen
utensils in greyscale, applied with full length
black panel to front that extends below hem

200 / 300 €

[Photo du lot sur notre site](#)

189. **ISSEY MIYAKE PLEATS PLEASE**
Un ensemble en polyester plissé Issey Miyake,
2000-2010

An Issey Miyake pleated polyester ensemble,
2000-2010
Pleats Please labels, size 5: comprising a dress
with exaggerated wide skirt, formed of joined
blue, grey and pale green panels; with matching
bolero (2)

300 / 500 €

[Photo du lot sur notre site](#)

190. **ISSEY MIYAKE PLEATS PLEASE**
Une robe plissée en polyester « dinosaure », 2006

A pleated polyester 'dinosaur' dress, 2006
Pleats Please label, size 3, printed design by
Nathalie Lété with birds dinosaurs and flora,
designed to form the shape of a dinosaur when
laid flat, when dressed the head and spines become
scalloped sleeves

600 / 1000 €

191. **COMME DES GARÇONS**
Une veste en laine crème,
Automne-Hiver 2006

An embellished cream brushed wool jacket,
Autumn-Winter 2006
CDG CDG label and Jewellery by Ligia Dias label,
applied with bands of brass flowers, faux-pearls
and rhinestones to neckline, jettted flap pockets,
bust 91cm 36in

200 / 300 €

[Photo du lot sur notre site](#)

192. ISSEY MIYAKE
Un ensemble en coton noir et beige,
années 2000

A black and beige cotton ensemble, 2000s
Fête label, size 2, comprising: a coat of beige
warp and black weft woven cotton twill, with long
fouled lapels, internal layer of black shirred
cotton with front zip closure, chequerboard woven
neckline, chest 38cm 15in (extensible) ; a pair of
matching trousers with shirred gathers, extended
checkerboard woven black cotton waistband, waist
48cm extensible jusqu'a 84cm au maximum (2)

200 / 400 €

[Photo du lot sur notre site](#)

193. ISSEY MIYAKE PLEATS PLEASE
Une robe plissée en polyester, 2007

A pleated polyester 'handstand' dress, 2007
Pleats Please label, size 4, colourfully printed
with stripes and geometric shapes reminiscent of
artists Beatriz Milhazes and Sarah Morris, with
fringed purple panel to midriff applied with an
orange figure performing a handstand whose legs
are cut free from the main body of the dress so
they hang down when the garment is worn

250 / 400 €

[Photo du lot sur notre site](#)

194. ISSEY MIYAKE PLEATS PLEASE
Une robe plissée en polyester,
probablement 2007

A pleated polyester dress, probably 2007
Pleats Please label, size 3, printed with cartoon
exclamation mark speech bubbles in neon yellow,
pink and orange, the hem with small kick split
to one side

250 / 400 €

[Photo du lot sur notre site](#)

195. ISSEY MIYAKE PLEATS PLEASE
Trois tops plissés en polyester,
années 2000

Three pleated polyester tops, 2000s
Pleats Please labels, comprising : a sleeved
purple example with two slits for the head,
allowing it to be worn in different ways, with
pleated tassels to pointed hem, size 5; a pink
bolero with pointed arm holes, single button,
size F; a black, purple and grey striped example,
unlabelled (3)

300 / 500 €

[Photo du lot sur notre site](#)

196. ISSEY MIYAKE PLEATS PLEASE
Une robe de couverture de pique-nique en polyester
plissé « Recipe Of The Pleats Plate », 2007

A pleated polyester 'Recipe Of The Pleats Plate'
picnic blanket dress, 2007
Pleats Please label, designed to form a picnic
blanket when laid flat, printed with red and white
gingham, overlain with ingredients and plated
quiches, with fringed hem

500 / 700 €

197. ISSEY MIYAKE PLEATS PLEASE
Un ensemble « Recipe Of The Pleats Plate »
en polyester plissé, 2007

A pleated polyester 'Recipe Of The Pleats Plate'
ensemble, 2007
Pleats Please label, comprising a blouse and
matching skirt printed with red and white gingham
ground, overlaid with ingredients and plated
quiches, skirt with fringed hem, patch pockets
and drawstring waist (2)

400 / 600 €

[Photo du lot sur notre site](#)



196.



199.

198. **COMME DES GARÇONS**
Une robe en mousseline de soie imprimée,
probablement années 2000

A printed chiffon dress, probably 2000s
labelled, size S, the red ground printed with
black foliate repeats, with slits at the bust,
frills to neckline and faux-pockets, the upper
bodice constructed as a blazer of navy check wool
complete with lapels and buttons, concealed side
pockets, bust 81cm 32in

300 / 500 €

[Photo du lot sur notre site](#)

199. **ISSEY MIYAKE PLEATS PLEASE**
Une robe « visage » plissée en polyester,
imprimée par Ikko Tanaka, 2007

A pleated polyester 'face' dress with print by
Ikko Tanaka, 2007
Ikko Tanaka label, size 3, the geometric cut
simulating a face in profile, printed with
geometric facial features in brown, orange and
blue tones

300 / 500 €

200. **ISSEY MIYAKE PLEATS PLEASE**
Un ensemble en polyester plissé, 2008

A pleated polyester ensemble, 2008
Pleats Please label, size F, printed with
colourful geometric forms and mathematical
symbols, comprising circle-cut top and geometric
skirt designed to mimic the shapes in the print,
the additional fabric in the skirt drapes at the
side when worn (2)

300 / 500 €

[Photo du lot sur notre site](#)

201. **ISSEY MIYAKE PLEATS PLEASE**
Une robe en polyester plissé ivoire,
vers 2008

An ivory pleated polyester dress, circa 2008
Pleats Please label, size 4, printed in black
with psychedelic figure and birds to front

200 / 300 €

[Photo du lot sur notre site](#)

202. **ISSEY MIYAKE PLEATS PLEASE**
Une robe noire plissée en polyester à franges,
circa 2009

A black pleated polyester fringed dress,
circa 2009
Pleats Please label, size 5, with cascading
layers of fringes to front and back

An identical dress was photographed by Francis
Giacobetti in Midorie Kitamura et al, Pleats
Please Issey Miyake, Taschen, Cologne, 2012,
p.162-163

200 / 300 €

[Photo du lot sur notre site](#)

203. **COMME DES GARÇONS**
Une robe noire en coton et nylon réfléchissant, collection
Multiple Personalities, Psychological Fear,
Printemps-Eté 2011

A black reflective cotton/nylon dress, Multiple
Personalities, Psychological Fear' collection,
Spring-Summer 2011
labelled and 10 Corso Como label, size S, with
darted bodice, matching belt with outsized
buckle, bust 86cm 34in

200 / 300 €

[Photo du lot sur notre site](#)

204. **COMME DES GARÇONS/JUNYA WATANABE**
Une cape en patchwork noir,
Automne-Hiver 2014-15

A black patchwork cape, Autumn-Winter 2014-15
labelled, size S, comprised of intersecting and
overlapping crescent panels of wool, faux-fur,
polyester mesh and sequined tulle, with pop
fasteners to front

250 / 400 €

[Photo du lot sur notre site](#)

205. YOHJI YAMAMOTO
Une jupe en dentelle noire,
Printemps-Eté 2015

A black lace skirt, Spring-Summer 2015
labelled, size 2, of black chemical lace
with integral braces, waist approx 81cm 32in

300 / 500 €

[Photo du lot sur notre site](#)

206. YOHJI YAMAMOTO
Un manteau sculptural en gabardine noire fine,
Automne-Hiver 2019-20

A fine black gabardine sculptural hand coat,
Autumn-Winter 2019-20
labelled, size 2, with front flap partially
concealing hanging woollen yarns that have been
threaded through from a layer behind, sculpted
hands to seat area and left shoulder, open right
shoulder, stand collar, concealed pop fasteners
to front, still with original store tags and
fabric swatch, chest 97cm 38in

3000 / 5000 €

207. MARTIN MARGIELA
Un manteau en laine double face et denim,
Automne-Hiver 1999-2000

A double-faced wool and denim coat,
Autumn-Winter 1999-2000
blank label, size 44, of blue denim and grey
wool, collarless, with integral belt and buckle,
chest approx 112 cm 44in

400 / 600 €

[Photo du lot sur notre site](#)





208.

208. GIVENCHY HAUTE COUTURE
PAR ALEXANDER MCQUEEN
Une robe de cocktail en laine à carreaux Prince de Galles,
Printemps-Eté 2001

A Prince of Wales check wool cocktail dress, Spring-Summer 2001, labelled and numbered 88071, with turquoise bands, the boned strapless bodice with embroidered and appliqued shaped organza bands edged in brown and turquoise beads with satin-stitched, pulled and drawn threadwork fillings, the uppermost panel attached to a turquoise beaded choker neck band, box-pleats to hem, bust 86cm, 34in, waist 66cm, 26in

On the runway this dress was accessorised with a trilby hat and a matching scarf

2000 / 3000 €

209. GIVENCHY HAUTE COUTURE
PAR ALEXANDER MCQUEEN
Une robe en cuir à franges, Printemps-Eté 2001

A fringed leather dress, Spring-Summer 2001
labelled and numbered 86023, the top-stitched
corseted brown leather bodice with punched
decorations interwoven with ivory leather
thongs, rope-twists of top-stitched leather form
circular straps for the upper arms and a long
draped loop down the back, the skirt formed from
tiers of brown and white leather fringes mounted
onto an organza underskirt, bust approx 86cm
34in, waist 66cm 26in

This dress comes from McQueen's final haute couture
show for Givenchy before they parted ways due
to 'artistic differences'. For this collection
he was influenced by different world cultures and
for this dress there are suggestions of Native
American people with the interwoven leather
strips and the use of fringing. The supple brown
leather is butter-soft and the plain and punched
decorations not only on the interwoven bands
of the bodice but also on the tiered skirt are
subtle and effective.

6000 / 10 000 €

210. ALEXANDER MCQUEEN
Une veste en crêpe mousse rouge, collection
« Widows of Culloden »,
Automne-Hiver 2006-2007

A red moss crêpe jacket, 'Widows of Culloden'
collection, Autumn-Winter 2006-07
metal label, size 38, with single faux horn
button, with buttonholes extending up edges
of wide lapels, collar peaks tacked to lapels,
jettied pockets, pleated rear vent, hem short at
front tapering to longer at rear, bust 92cm 36in

200 / 300 €

[Photo du lot sur notre site](#)



209.



211. JOHN GALLIANO
Une robe en satin-cuir rouge Cheongsam 'Shanghai Lil',
collection 'Filibustiers',
Printemps-Eté 1993

A red satin-cuir 'Shanghai Lil' cheongsam,
'Filibustiers' collection, Spring-Summer 1993
unlabelled, constructed of joined and intersecting
spirals of fabric, with stand collar,
bust 91 cm 36in

800 / 1200 €

[Photo du lot sur notre site](#)

212. JOHN GALLIANO
Une veste en rayonne noire côtelée, collection
« Princess Lucretia »,
Printemps-Eté 1994

A black ribbed rayon jacket, 'Princess Lucretia'
collection, Spring-Summer 1994
Black label, size 38/6, with lace covered
satin panels to front, back and cuffs, slits
to shoulders revealing additional lace, funnel
sleeves, bust 81cm 32in; together with a pair of
black satin-cuir trousers, S/S 1993, unlabelled,
applied with zip edges, waist 66cm 36in (2)

1500 / 2500 €

213. JOHN GALLIANO
Une rare queue de pie en faille moirée noire, collection «
Misia Diva (Pin Up) »,
Printemps-Eté 1995

A rare black moiré faille tailcoat, 'Misia Diva
(Pin Up)' collection, Spring-Summer 1995
Paris label, size 38/6, with exaggerated front
and tail panels, padded shoulders with over-
stitched detailing, chest approx 86cm 34in

700 / 1000 €

[Photo du lot sur notre site](#)

214. JOHN GALLIANO
Une robe en crêpe de mousse noir, collection
« Misia Diva (Pin Up) »,
Printemps-Eté 1995

A black moss crêpe dress, 'Misia Diva (Pin Up)'
collection, Spring-Summer 1995
Paris label, size 36/4, the satin-backed crêpe
inset with intersecting panels of the fabric in
reverse creating a satin ribbon effect on the
exterior, with spaghetti straps, cowl neckline,
trained hem, bust 85cm 34in

A version of this dress was worn by Carla Bruni
on the runway

1200 / 1800 €



214.



215.

215. CHRISTIAN DIOR PAR JOHN GALLIANO
Une gaine « Bouleverse »,
pré-collection 2001

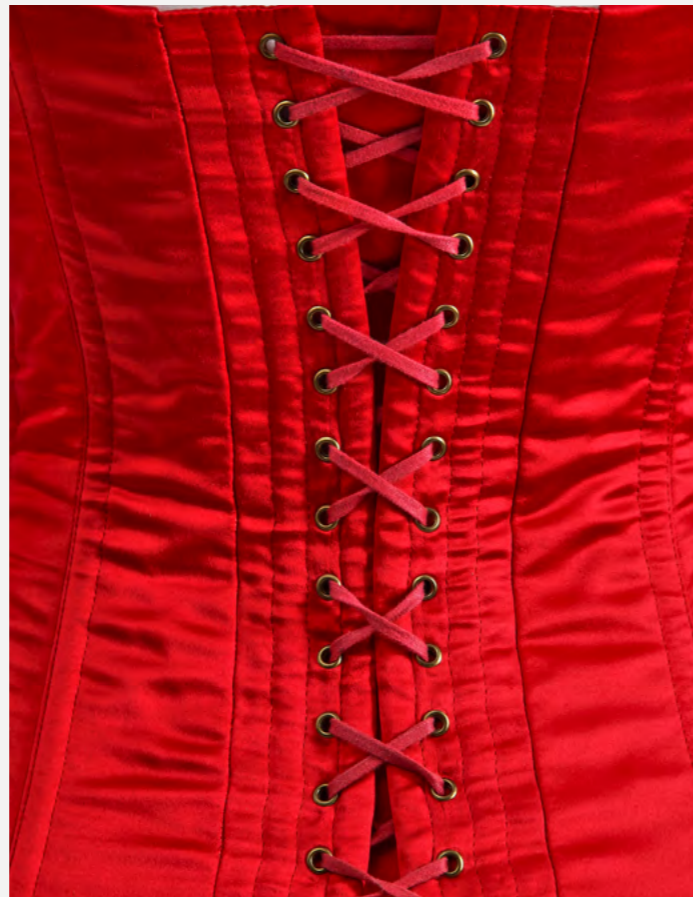
A 'Bouleverse' sheath, pre-collection 2001
labelled, French size 36, of ivory taffeta
printed with watercolour effect parrot head
tulips, with single belt and buckle shoulder
strap, with laced panel that revolves from front
to back, long trained skirt, bust approx
81cm 32in

1500 / 2500 €

216. CHRISTIAN DIOR HAUTE COUTURE
PAR JOHN GALLIANO
Un bel ensemble de soirée comprenant un body et une
robe, collection « Freud Fetish »,
Automne-Hiver 2000-01

A fine evening ensemble, 'Freud Fetish' collection,
Autumn-Winter 2000-01, labelled and numbered
31618, comprising: a bias-cut dress covered in
shimmering black sequins, the diagonal neckline
with triple flounces of chiffon, the long trained
skirt with off-centre kick-split to the front,
another to the back the hem inset with godets of
pin-tucked black chiffon, low, bare asymmetric
back opening culminating in bustle-like sequin
and chiffon flounces, with elaborate jewelled
shoulder straps and diagonal back strap, finger
loop to hem edge; together with a heavily boned
scarlet satin corset/body, with shaped breast
cups, back laced, with zip and popper fastenings
to lycra lower section, bust approx 86cm 34in,
waist 68cm 26in

20 000 / 30 000 €



216.



La collection 'Freud/Fétiche' de Dior est sans doute l'une des plus belles de Galliano. Le travail luxueux, les créations imaginatives et la pure beauté de cette collection ont élevé l'atelier et Galliano à un nouveau niveau. La collection 'Freud' abordait des thèmes de sexualité refoulée, de fantasme et de fétichisme.

Galliano a expliqué ses idées pour ce défilé :
 « Je crois que Monsieur Dior a été le premier véritable designer fétichiste. Il avait un complexe d'Edipe, il était en admiration devant sa mère, et son New Look regorgeait de symbolisme fétichiste. Il suffit de regarder les talons hauts, les corsets, qui mettaient en valeur le buste et la taille, les grandes jupes qui accentuaient les hanches. » Interview de John Galliano par Hilary Alexander, The Telegraph, 8 juillet 2000.

Le défilé commence par l'histoire imaginative d'un mariage maudit, avec les mariés menottés ensemble (évidemment avec des menottes serties de strass Dior), un prêtre démoniaque richement orné avec une taille resserrée (dans un corset de Mr Pearl), et la fête de mariage sophistiquée, incluant Marisa Berenson dans le rôle de la mère de la mariée. Au fur et à mesure du défilé, il comportait des phases plus oniriques/cauchemardesques, incluant une dominatrice, un juge avec un collier en forme de nœud coulant, une marionnette japonaise et une poupée mécanique en robe polonaise de style XVIIIe siècle brodée de scènes de guillotine.

Ce look en particulier était porté par Sophie Dahl dans le rôle de la 'Bonne Sexy', avec un maquillage pâle rappelant une poupée et des lèvres en bouton de rose. La robe et le corset séduisants étaient en grande partie dissimulés par le tablier et le chapeau en coton blanc de la bonne, et accessorisés avec un plumbeau.

The Dior 'Freud/Fetish' collection is arguably one of Galliano's finest. The luxurious workmanship, the imaginative designs and sheer beauty of the collection took the atelier and Galliano to a new level. The 'Freud' collection dealt with themes of suppressed sexuality, fantasy and fetishism. Galliano explained his ideas for this show:

«I believe Monsieur Dior was the first true fetishist designer. He had an Oedipus complex, he was in awe of his mother and his New Look was full of fetish symbolism. You only have to look at the high heels, the corsets, which emphasised the bust and waist, the big skirts which emphasised the hips.» John Galliano interview with Hilary Alexander, The Telegraph, 8 July 2000.

The show begins with the imaginative tale of a doomed wedding with bride and groom handcuffed together (Dior rhinestone inset ones of course) with a lavishly bejewelled demonic priest with nipped waist (in a Mr Pearl corset), the soigne wedding party including Marisa Berenson as the mother of the bride. As the show progressed it included more dream/nightmare like phases including a dominatrix, a judge with hangman's noose necklace, a Japanese puppet, and a clockwork doll in 18th century style polonaise gown embroidered with guillotine scenes.

This particular look was modelled by Sophie Dahl in the rôle of the 'Sexy Maid', with pale doll-like makeup and rosebud lips. The seductive dress and corset was largely concealed by the maid's white cotton apron and hat and accessorised with a feather duster.





FORMULAIRE D'ORDRE D'ACHAT / ABSENTEE BIDS FORM

DATE DE LA VENTE :

27 JUIN 2024

IMPORTANT

Maurice Auction pourra exécuter sur demande des ordres d'achat par écrit et par téléphone, sans supplément de coût et aux risques du futur enchérisseur. Maurice Auction s'engage à exécuter des ordres sous réserve d'autres obligations pendant la vente. Maurice Auction ne sera pas responsable en cas d'erreur ou d'omission quelconque dans l'exécution des ordres reçus, y compris en cas de faute.

Veillez noter que nous nous réservons le droit de demander des références de votre banque si vous êtes un nouveau client.

Merci de joindre au formulaire d'ordres d'achat :

- un Relevé d'Identité Bancaire
- copie d'une pièce d'identité avec photo (carte d'identité, passeport)
- une preuve d'adresse ou, pour une société, un extrait d'immatriculation au RCS.

Maurice Auction may execute written and telephone purchase orders upon request, at no additional cost and at the risk of the prospective bidder. Maurice Auction undertakes to execute orders subject to other obligations during the sale. Maurice Auction will not be responsible for any error or omission in the execution of orders received, including in the event of fault.

Please note that we reserve the right to request references from your bank if you are a new customer.

Please attach to the purchase order form :

- a bank statement
- a copy of a photo ID (ID card, passport...)
- a proof of address or, for a company, an extract of registration to the RCS.

LES ORDRES D'ACHAT ÉCRITS / ABSENTEE BIDS

Ces ordres d'achat seront exécutés au mieux des intérêts de l'enchérisseur en fonction des autres enchères portées lors de la vente.

Les offres illimitées, « d'achat à tout prix » et « plus une » ne seront pas acceptées. Veuillez inscrire vos ordres d'achat dans le même ordre que celui du catalogue.

Les enchères alternées peuvent être acceptées à condition de mentionner « ou » entre chaque numéro de lots.

Les ordres d'achat seront arrondis au montant inférieur le plus proche du palier des enchères donné par le commissaire-priseur.

These purchase orders will be executed in the best interest of the bidder based on the other bids placed at the sale.

Unlimited, «buy at any price» and «plus one» bids will not be accepted. Please place your bidding orders in the same order as in the catalog.

Alternate bids may be accepted as long as «or» is entered between each lot number. Bids will be rounded down to the nearest bidding level given by the auctioneer.

LES ORDRES D'ACHAT TÉLÉPHONIQUES / TELEPHONE BIDS

Veillez indiquer clairement le numéro de téléphone où nous pourrions vous contacter au moment de la vente, y compris le code du pays. Nous vous appellerons de notre salle de ventes peu avant que votre lot ne soit mis aux enchères.

Please clearly indicate the phone number where we can contact you at the time of the sale, including the country code. We will call you from our auction room shortly before your lot goes up for auction.

CIVILITÉ (OU NOM DE L'ENTREPRISE) / TITLE (OR COMPANY NAME - IF APPLICABLE)

NOM / LAST NAME

PRÉNOM / FIRST NAME

ADRESSE / ADDRESS

VILLE / CITY

CODE POSTAL / ZIP CODE

PAYS / COUNTRY

TÉLÉPHONE / PHONE NUMBER

EMAIL / EMAIL

Veillez inscrire lisiblement vos ordres d'achat. En cas d'ordres d'achat identiques, le premier réceptionné aura la préférence. Les ordres d'achat devront être communiqués en euros au moins 24h avant la vente.

Please write your purchase orders legibly. In case of identical purchase orders, the first one received will have preference. The absentee bids must be communicated to us in euros at least 24 hours before the sale.

N° DE LOT DESCRIPTION DU LOT
LOT NUMBER LOT DESCRIPTION

PRIX MAXIMUM EN EUROS
(hors frais de vente et tva)

MAXIMUM PRICE IN EUROS
(excluding sales costs and vat)

_____	_____	€
_____	_____	€
_____	_____	€
_____	_____	€
_____	_____	€
_____	_____	€
_____	_____	€

Formulaire à retourner par courriel ou voie postale au :

Form to send by email or post to:

Maurice auction, 60, rue la boétie, 75008 Paris
ou/or contact@mauriceauction.com

J'accepte les Conditions Générales De Vente de Maurice Auction, telles qu'elles sont publiées dans le catalogue. Ces dernières régissent tout achat lors des ventes chez Maurice Auction.

I accept the General Terms and Conditions Of Sale of Maurice Auction as published in the catalog. These terms and conditions govern all purchases at Maurice Auction.

Je m'engage à régler à Maurice Auction en sus du prix d'adjudication, une commission d'achat aux taux indiqués dans les Conditions Générales De Vente, la TVA au taux en vigueur étant en sus. Je consens à l'utilisation des informations inscrites sur ce formulaire et de toutes autres informations obtenues par Maurice Auction, en accord avec le guide d'ordres d'achat et les Conditions Générales De Vente.

I agree to pay Maurice Auction, in addition to the hammer price, a buying commission at the rates indicated in the General Terms And Conditions Of Sale, plus VAT at the applicable rates. I consent to the use of the information entered on this form and any other information obtained by Maurice Auction, in accordance with the purchase order guide and the General Terms And Conditions Of Sale.

SIGNATURE

DATE

MAURICE } AUCTION

Maurice Auction
60, rue La Boétie
75008 PARIS - FRANCE
N° SIRET : 90824105200020

www.mauriceauction.com
contact@mauriceauction.com
@maurice_auction
Téléphone : +33 (0)1.49.53.90.25



{ DESIGN & ART
CONTEMPORAIN }
SEPTEMBRE 2024

VENTE EN PREPARATION

Pour inclure des lots dans cette vente veuillez
contacter:
If you wish to consign some lots in this sale
please contact:

Salomé Pirson
spirson@mauriceaution.com



{ JOAILLERIE }

VENTE EN PREPARATION

Pour inclure des lots dans cette vente veuillez
contacter:
If you wish to consign some lots in this sale
please contact:

Marie Laurence Tixier
mltixier@mauriceauktion.com

VOS BIENS EXPERTISÉS EN RÉGION, VENDUS AVEC SOIN CHEZ MAURICE

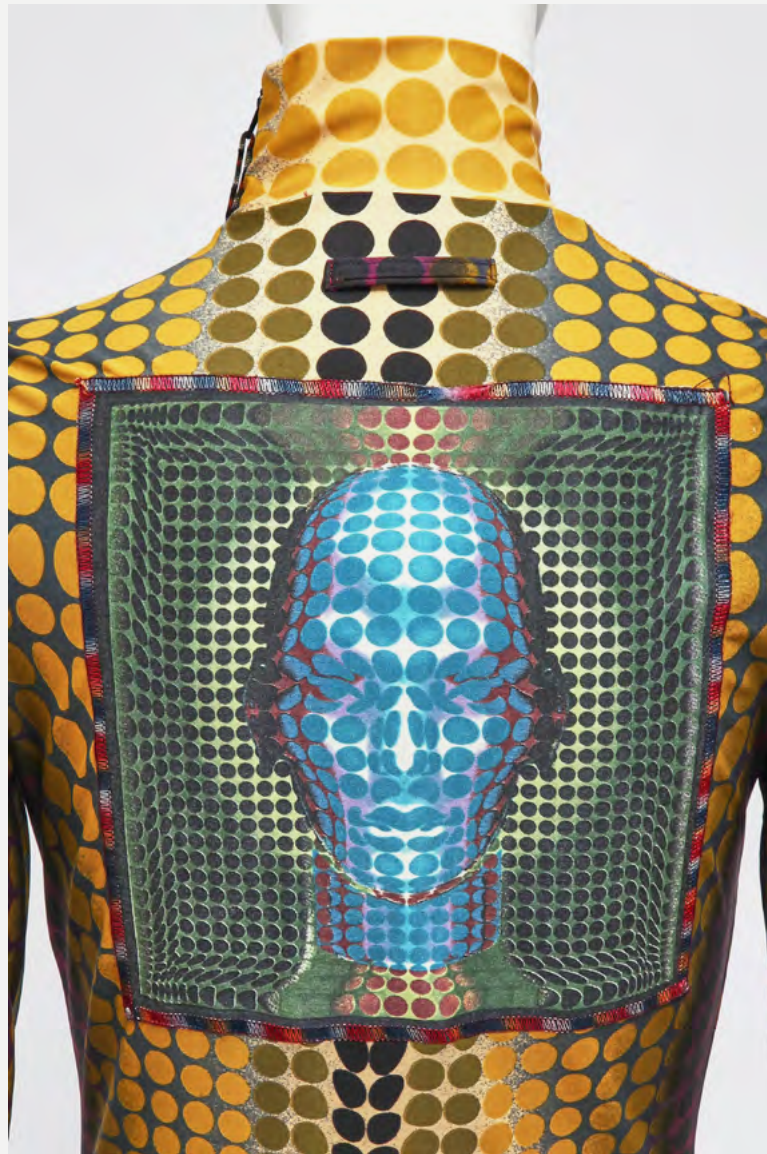
CONTACTEZ NOUS
POUR TOUTES DEMANDES D'ESTIMATIONS
CONTACT@MAURICEAUCTION.COM

DO NOT HESITATE TO CONTACT US FROM EVERYWHERE
IF YOU WISH TO SELL IN PARIS
CONTACT US DIRECTLY TO RECEIVE A VALUATIONS

The map shows the following items and their sale prices:

- SERVICE D'ASSIETTES EUGÈNE MILLET** (DINARD): VENDU 1 690€
- COLLIER DE PERLES FINES** (PARIS): VENDU 119 600€
- PICABIA MARTIGUES 1905** (PARIS): VENDU 58 500€
- GEL JEAN MESSAGIER** (BESANÇON): VENDU 5 980€
- CAISSE DUCLOT COLLECTION 2012** (TOURS): VENDU 4 500€
- PAIRE DE PHOTOPHORES ANDRÉ DUBREUIL** (MONACO): VENDU 45 500€
- TABLEAU ATELIER DE PEETER BALTENS** (BÉZIERS): VENDU 13 260€
- TUNIQUE GABRIELLE CHANEL 1922** (GRASSE): VENDU 130 000€

MAURICE }



} AUCTION

Maison de Ventes aux Enchères
60, rue La Boétie
75008 PARIS



contact@mauriceauction.com
+33 (0)1 49 53 90 25
@ maurice_auction